

User Manual

HW550-3G

3G Mobile Broadband plus 4-Port Wireless-N Router

Table of Contents

About the Product	4
Features	5
Requirements	6
Package Content	7
Device Design	8
Getting Started	11
Plan Your Network	12
Remove or Disable Conflicts	13
Installing your Router	14
Connecting to the Internet	15
WiFi Protected Setup (WPS)	19
Connect/Disconnect Button	20
About the Web User Interface	21
Basic Mode	22
Home	22
Storage	22
Printer	23
Wizard	33
Quick Setup	36
Advanced Page	38
Network	38
Local	38
Internet	39
Wireless	41
Settings	41
Security	42
Applications	43
Port forwarding	43
DMZ	43
Filtering	44
DDNS (Dynamic DNS)	45
System	46
System Information	46
Settings	46
Firmware Upgrade	47

Reboot.....

47

Password.....

48

Regulatory Compliance Notices.....

49

About the Product

- AZTECH HW550-3G is an IEEE802.11n wireless broadband Router with EVDO\HSDPA\HSUPA support. Simply plug in the USB 3.5G or USB EVDO Modem to the Router, an Internet connection can be accessed and shared virtually anytime anywhere within a wireless broadband network.
- 4-Port Wireless-N Broadband Router to Share Wireless Internet Connection with more users.
HW550-3G also integrates router function so that Internet can be accessed through WIFI connection simultaneously. HW550-3G 4-port wireless-N router function provides an excellent solution for sharing a wireless Internet connection and files such as High Definition (HD) video, music, photos and documents with the wireless speed up to 300Mbps.
- Advanced Wireless Security
AZTECH HW550-3G creates a secure WiFi® network by supporting the latest wireless security features to prevent unauthorized access. It supports for 64/128-bit WEP, WPA, and WPA2 to ensure that you will be able to secure your WiFi network, regardless of your client devices. In addition, the 3G Mobile Router utilizes dual active firewalls (SPI and NAT) to prevent potential attacks from across the Internet.
- Wide Wireless Coverage
The product integrates 2x2 (2 transmit and 2 receive) antennas. This MIMO technology overlay the signals of multiple radios, which successfully reduce “dead spots”, increase throughput and increase wireless coverage range.
- Easy to install and Use
By connecting an EVDO or 3.5G modem into the USB port of HW550-3G, Internet access can be accessed and shared virtually anywhere within a wire or wireless broadband network. You can also directly connect Ethernet-based devices to its built-in 4-port full-duplex 10/100 switch.

Features

- 2-in-1 dual function Router - HSPA support for 3G mobile broadband plus 4-port wireless N router
- Support EVDO/HSDPA/HSUPA USB modem connection - to offer a network connection with full mobility
- Converts single user EVDO/3G USB modem into a multiple users ready WiFi Router - to share the mobile Internet connection with your family, friends and colleagues
- Support IEEE802.11b/g and 11n (draft 2.0) wireless standard - data transfer rate reaches up to 300Mbps
- Support WAN Port and 4-Port 10/100M Ethernet - dual way connections to DSL/Cable modem for Internet access
- Support for 64/128-bit WEP, WPA, and WPA2 - ensure secure WiFi network, and prevent unauthorized access
- Support WiFi Protected Setup - reduce by half the user steps to configure a network
- Adopt 2x2 MIMO technology - increase throughput and increase wireless coverage range
- Detachable Antennas - allows flexible gain performance antennas.

Requirements

Your computer must meet the following minimum requirements.

- Internet Explorer 7 or Mozilla 3.0.5
- CD-ROM Drive
- Ethernet network adapter

Package Content

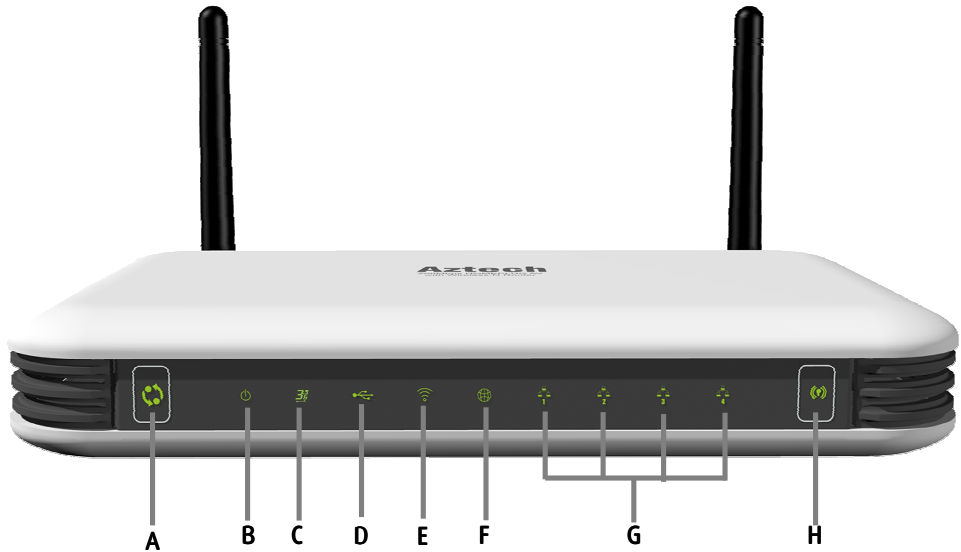
The package should contain the following items:

- HW550-3G
- CD Content
- 12.0V, 1A Power Adapter (Model SWM11-12120)
- Easy Start Guide

If any of the items is missing please contact the dealer from whom the equipment was purchased.

Device Design

Front Panel



	LED	Behavior	Description
A	UMTS 3.5G Connect/Disconnect Button		Easy Connect and Disconnect to your 3.5G broadband.
B	Power	Off	No power is supplied to the device.
		Steady Light	Connected to an AC power source.
C	3G	On	UMTS (3.5G) or CDMA 2000 (EVDO) Internet connection is active
		Off	UMTS (3.5G) or CDMA 2000 (EVDO) Internet connection is off
D	USB	On	Active USB device is connected to the router
		Off	No active USB device connected to the router
E	WiFi	On	Wireless is enabled
		Off	Wireless is disabled

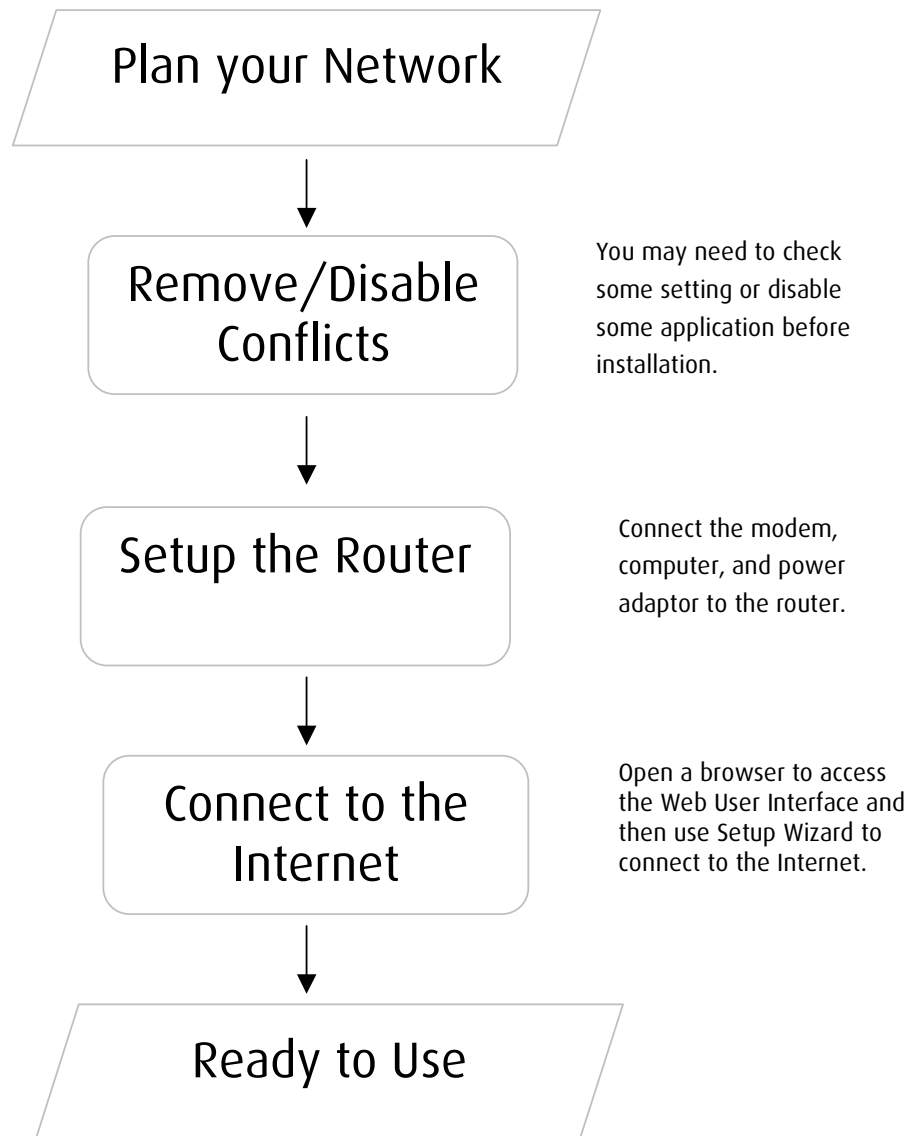
		Blinking	Transmitting/Receiving data wirelessly
F	WAN	On	Connected to a Modem
		Off	No Modem connection
G	Ethernet 1-4	On	Connected to an Active Ethernet Device
		Off	No Ethernet Connection
		Blinking	Transmitting/Receiving Data
H	WPS		Press for two seconds (or until the LED blinks) to start WPS pairing. Wireless client must be WPS-enabled and must be pressed within 2 minutes.

Back Panel



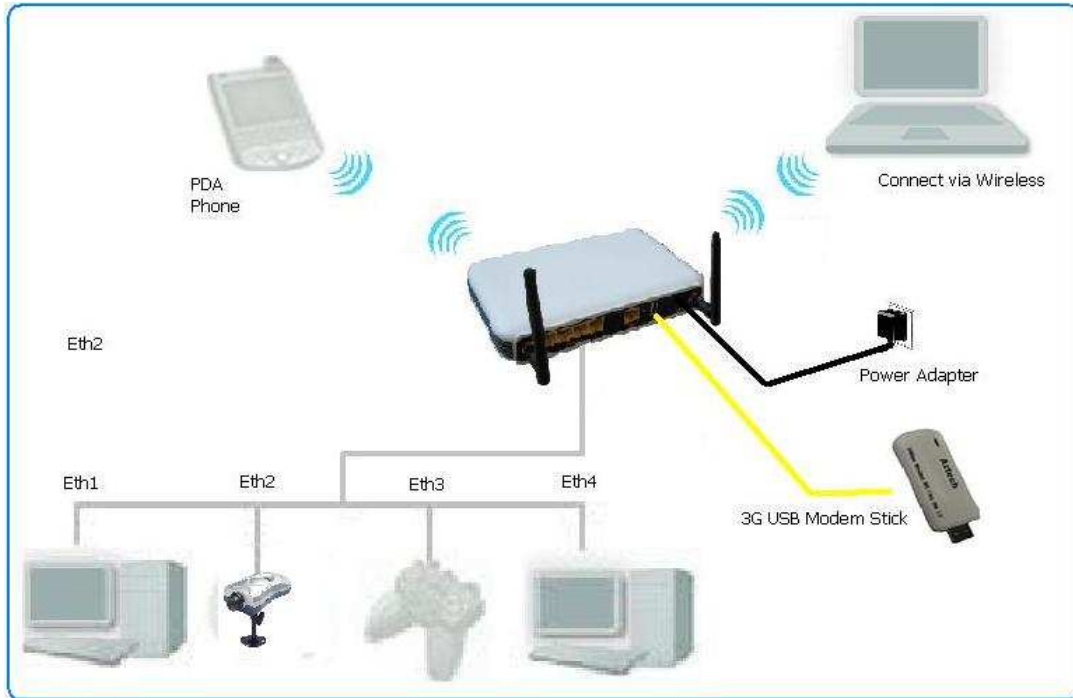
	Label	Description
A	Ethernet Port 1-4	Connecting with computers/devices using an Ethernet cable
B	WAN	Connect to a modem using an Ethernet cable
C	Reset	Press for 3 seconds to reset to the Factory Default.
D	USB Port	Connect to a USB 3G modem, CDMA 2000 (EVDO), USB storage, printer and alike.
E	Power Jack	Use 12V 1.0A Power Adapter
F	Antenna 1 and 2	Sending/Receiving wireless signals

Getting Started

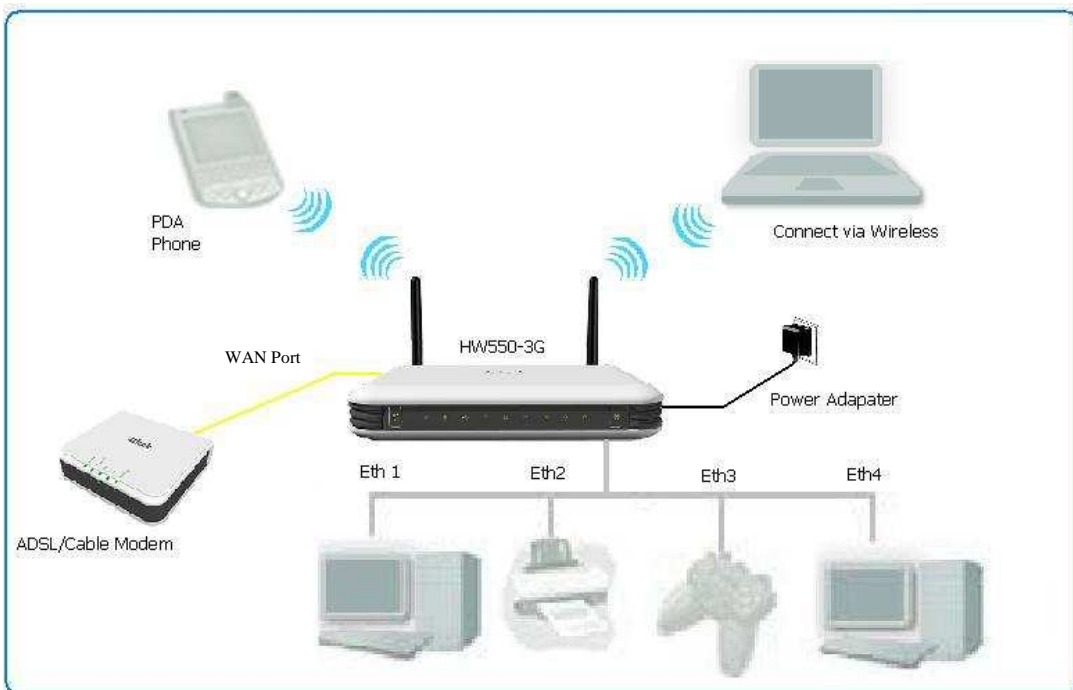


Plan Your Network

1. Using a 3G USB Modem Stick



2. Using a DSL/Cable modem



Remove or Disable Conflicts

To make sure the router installation moves on smoothly, you need to remove or disable conflicts that may interfere the installation. Probable conflicts may include:

- Internet sharing applications
- Proxy software
- Security software
- TCP/IP settings
- Internet properties
- Temporary Internet files

Internet Sharing, Proxy, and Security Applications

Internet sharing, proxy software, and firewall applications may interfere with the router installation. These should be removed or disabled before start the installation.

If you have any of the following or similar applications installed on your computer, remove or disable them according to the manufacturer's instructions.

Internet Sharing Applications	Proxy Software	Security Software
Microsoft Internet Sharing	WinGate	Symantec
	WinProxy	Zone Alarm

Configuring the TCP/IP Settings

Check if your computer uses default TCP/IP Settings

To check the TCP/IP properties:

1. Click the Start button, and then click Run. This opens the Run dialog box.
2. Type in ncpa.cpl, and then click OK. This opens the Network Connections in your computer.
3. Right-click LAN, and then select Properties. This opens the Local Area Connection Properties dialog box.
4. Select Internet Protocol (TCP/IP), and then click Properties. This opens the Internet Protocol (TCP/IP) dialog box.
5. Select Obtain an IP address automatically.
6. To close the Internet Protocol (TCP/IP) dialog box, click OK.

7. To close the Local Area Connection Properties dialog box, click OK.

Configuring Internet Properties

To set the Internet Properties:

1. Click the Start button, and then click Run. This opens the Run dialog box.
2. Type in inetctl.cpl, and then click Ok. This opens the Internet Properties.
3. Click the Connections Tab.
4. In Dial-up and Virtual Private Network settings, select Never dial a connection.
5. Click Ok the button to close the Internet Properties.

Removing Temporary Internet Files

Temporary Internet files are files from Web sites that are stored in your computer. Delete these files to clean the cache and remove footprints left by the Web pages you visited.

To remove temporary Internet files:

1. Click the Start button, and then click Run. This opens the Run dialog box.
2. Type control, and then click OK. This opens Control Panel.
3. Double-click Internet Options. This opens Internet Options.
4. In the Temporary Internet Files pane, click Delete Cookies.
5. Click Delete Files.
6. To close Internet Properties, click OK.

Installing your Router

Mobile Broadband

If you choose to use a Mobile Broadband you are required to have the following:

- USB 3G Modem or USB EVDO Modem
 - Broadband data SIM card for USB 3G Modem
1. Plug in your USB 3G Modem (ensure Broadband SIM card is inside) or USB EVDO Modem on your router's USB port.
 2. Connect the power cable to the router's power jack and plug it in to the wall socket.
 3. Connect your PC to any available Ethernet port using an Ethernet cable or connect via wireless.

Using a DSL or Cable Modem

If you choose to use a DSL or Cable modem you are required to have the following:

- DSL or Cable modem
 - Active Internet Account
1. Connect your DSL or Cable modem to the router's WAN port using an Ethernet cable.
 2. Connect the power cable to the router's power jack and plug it in to the wall socket.
 3. Connect your PC to any of available Ethernet port using an Ethernet cable or connect via wireless.

Note: Ensure that the router's IP address does not conflict with the DSL/Cable modem. Please refer to your modem's User Manual on how to change the LAN IP address.

Connecting to the Internet

To Connect to the Internet via the Web User Interface:

1. Open your Internet web browser.
2. Type `http://192.168.2.1` in the address bar and press enter. This opens the login authentication page.
3. Type your Username and Password. Your default Username and Password is `admin/admin`.
4. Click the Wizard Tab then Follow the step-by-step guide on how to setup the router.



5. Select the Language and Time zone from the drop down box then click Next to continue.



6. Select the Internet Connection type then click Next to Continue.

If you choose Mobile Broadband, you are required to have the following:

- USB 3G Modem or USB EVDO Modem
- Broadband data SIM card for USB 3G Modem

If you choose Ethernet WAN, you are required to have the following:

- DSL or cable modem.
- Active Internet Account



7. Mobile Broadband Internet Connection

Please connect your USB 3G modem (ensure Broadband SIM card is inside) or USB EVDO modem to HW550-3G.

USB 3G Modem

- 3G Access Point Settings – Choose between List and Manual. **List** will provide the APN set by your Internet Service Provider. Choose your Country, Internet Service Operator and the APN. **Manual** you need to manually key in the APN provided by your ISP. Some ISP may require a different name for your APN. Please contact your ISP if you don't have this information

USB EVDO Modem

- Username and Password – Some ISP may require a Username and Password set by the Operators. Please contact your ISP if you don't have this information

Choose your preferred Connection Method

- Connect Manually – This connection method requires you to manually press the 'Connect' button each time Internet connection is required. Please note that the Internet connection will not be disconnected unless you manually press the 'Disconnect' button.
- Always connected – This connection method allows your Internet connection to be always ON. You need to manually press the 'Disconnect' button when Internet connection is not required.
- Dial on Demand- This connection allows you to set your router to automatically disconnect/connect back to the Internet when the router is on idle.

Aztech

Advanced Mode Reboot

Home Wizard Quick Setup

Mobile Broadband [Help]

UMTS (3.5G)	CDMA 2000 (EVDO)
Network Type: UMTS (3.5G)	Network Type: CDMA 2000 (EVDO)
3G Access Point Settings: List	3G Access Point Settings: List
Country: Select One	Country: Select One
Username: isp@ispname	Username: isp@ispname
Password: ****	Password: ****
Connection Method: Always Connected	Connection Method: Always Connected
Dial Number: *99***1#	Dial Number: *99***1#
SIM PIN:	SIM PIN:

Back Next Cancel

8. Ethernet WAN Connection

Please connect your DSL or Cable modem to HW550-3G WAN port using an Ethernet cable, make sure that you have an active Internet account.

Connection Type

- Static IP – select this if your ISP provides you the IP address, Subnet mask, Gateway and DNS server addresses.
- DHCP - if you select this your HW550-3G will automatically get an IP address from the DHCP server or from your ISP.
- PPPoE – select this if your ISP provides you the Username and Password for you to connect to the Internet.

Aztech

Advanced Mode Reboot

Home Wizard Quick Setup

WAN [\[Help\]](#)

Connection Method: Static IP (dropdown menu showing Static IP, DHCP, PPPoE)

IP Address:

Subnet Mask:

Default Gateway:

Primary DNS:

Secondary DNS:

Back Next Cancel

9. Setup your wireless connection, tick Wireless Enabled to activate your wireless connection and set the SSID for your HW550-3G. Click Next to continue.

Aztech

Advanced Mode Reboot

Home Wizard Quick Setup

Wireless Settings [\[Help\]](#)

Wireless Enabled: ☒

Broadcast SSID Enabled: ☒

SSID:

WPA Enabled: ☐

Passphrase (8 to 63 characters):

Back Next Cancel

10. Under Summary page verify the settings made then click 'Apply' for the settings to take effect.



WiFi Protected Setup (WPS)

WPS button allows you to activate WiFi Protected Setup (WPS). When you press the WPS button it automatically detects and connects wireless clients into the wireless network by broadcasting the wireless network settings from your Access Point to you wireless device/s.

To setup WPS:

1. Login to the router's WEB UI to Enable WPS option.
2. On your WEB browser type 192.168.2.1, use admin/admin on the authentication login page.
3. Go to Advanced Mode> Wireless> Security> choose Enable on the WPS Enable drop down box then click Apply.
4. Press the WPS button on the router for two seconds, or until the LED blinks
5. Within 2 minutes, press the WPS button on the Wireless Client.

Note: WPS can only be used with wireless client devices that have a compatible WPS component.

Connect/Disconnect Button

Connect/Disconnect button allows you to connect/disconnect to the Internet using your 3.5G mobile broadband.

To Setup Connect/Disconnect Button:

1. Press the Connect/Disconnect button for 2 seconds to change the current status of your 3.5G mobile broadband Internet connection.

Note: This button only applies for UMTS 3.5G Internet Connection type.

About the Web User Interface

To Access the Web User Interface

When your router is already setup, open your Web Browser and on the Address bar type in <http://192.168.2.1>

Username: **admin**

Password: **admin**

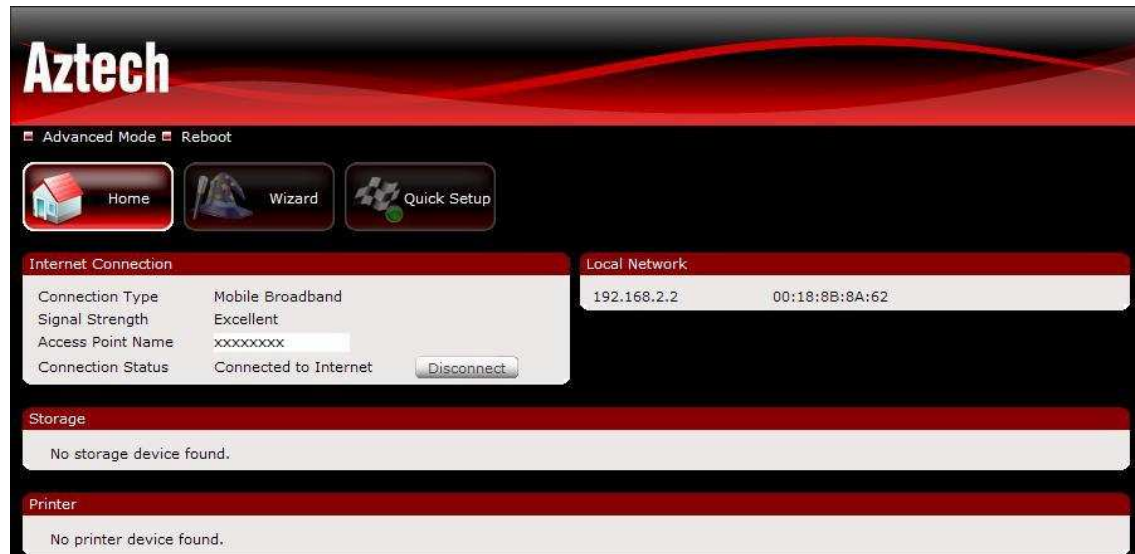


The WEB GUI includes the following settings for your router:

- Basic Mode
 - Home Page
 - Installation Wizard
 - Quick Setup
- Advanced Mode
 - Networking
 - Wireless
 - Application
 - System

Basic Mode

Home



Internet Connection

This pane will show you the Internet connection type and status of your HW550-3G.

Local Network

This pane will show you the lists of the clients that are connected to your HW550-3G.

Storage

This pane will show you the status of the mass storages that is connected to your HW550-3G. Select the Read/Write option on the drop down menu to have an access on your shared mass storage files.

Accessing the USB Mass Storage Devices

1. Connect the USB Mass Storage on your HW550-3G USB port.
2. On your PC click on the **Start** Button>**Run**>type [\\192.168.2.1](http://192.168.2.1) then click **OK**.
3. Samba Server window will open double click the icon folder to open the files.

Printer

This pane will show you the printer that is connected to your HW550-3G.

Print Server

To use the print server on the HW550-3G, you need to accomplish the following tasks:

1. Install the printer drivers on the computer
2. Connect the printer to your HW550-3G.
3. Add a network printer

INSTALL THE PRINTER DRIVERS

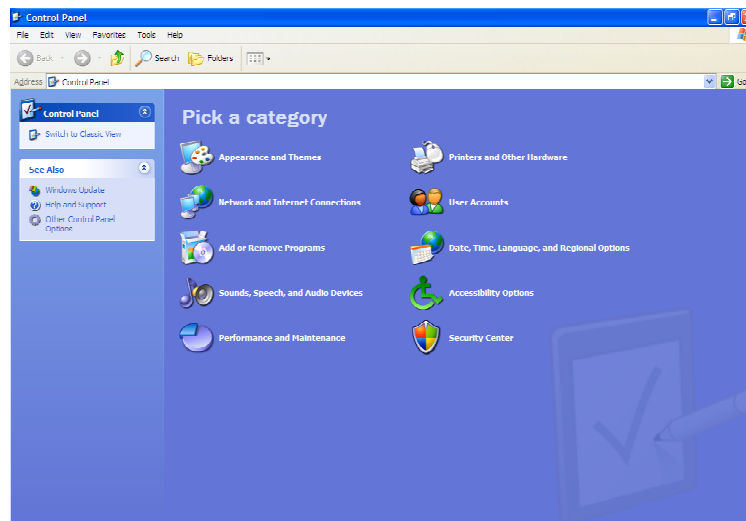
Printers using the USB port come with a software installation CD for installing the printer drivers and applications. The drivers for the printers must be installed on the computer first to prepare it to use the printer when it's connected to the HW550-3G. Refer to the printer's documentation on how to install the drivers.

ADD A NETWORK PRINTER

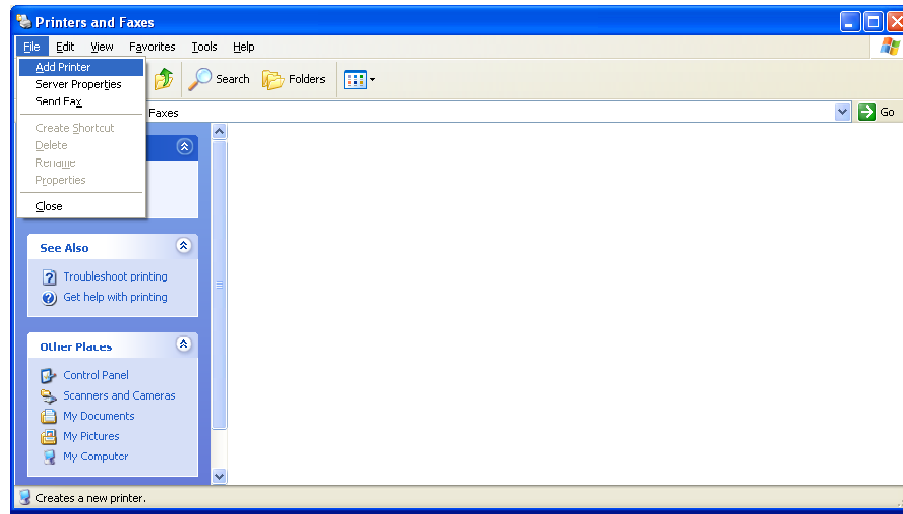
FOR WINDOWS XP

Before you continue, ensure that you have installed the printer's driver on this computer and the printer is attached to the HW550-3G.

1. Click on the **Start Button** > **Control Panel** > **Printers and Other Hardware** > **Printers and Faxes**.



2. Click on the **File Menu > Add Printer**.



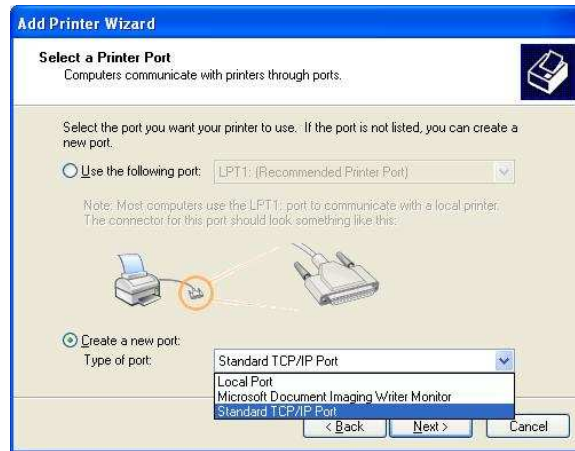
3. Click on **Next** on the Add Printer Wizard page.



4. Choose **Local Printer attached to this computer** and click **Next**, on the Local or Network Printer page.



5. Choose **Create a new port** and on the drop down box choose **Standard TCP/IP Port** then click **Next**.



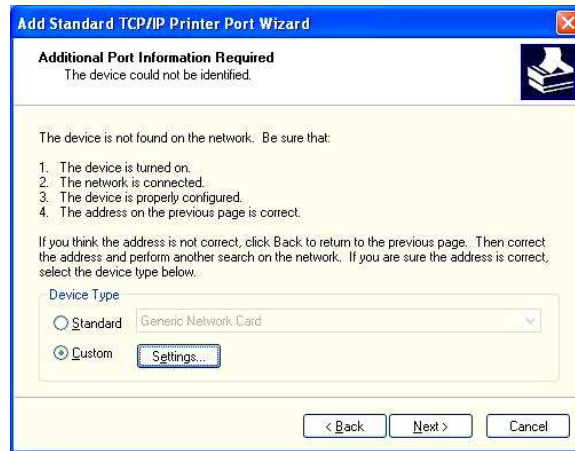
6. Click **Next** button on Welcome to the Add Standard TCP/IP Printer Port Wizard.



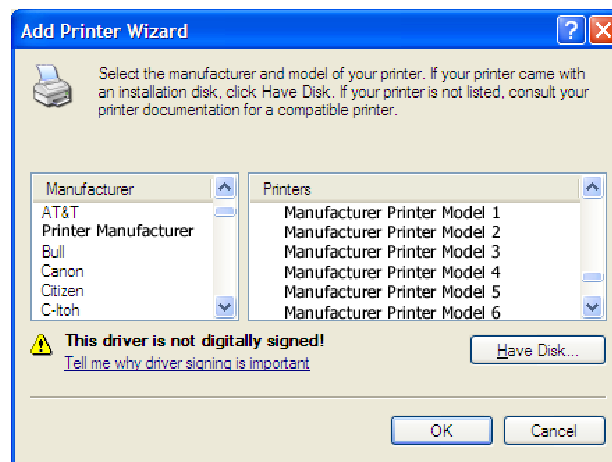
7. Enter your HW550-3G's Default Gateway IP address **192.168.2.1** then click **Next**.



8. Under Additional Port Information Required choose **Custom** then click **Next**



9. Once the computer detects the printer on the Print Server, it will ask for the printer manufacturer and model, a list of printers will be shown, select the your printer from the list and click **OK**.



10. Choose **Keep existing driver (recommended)** then click **Next** until you reach **Completing the Add Printer Wizard**.



11. Click **Finish** to complete the installation.

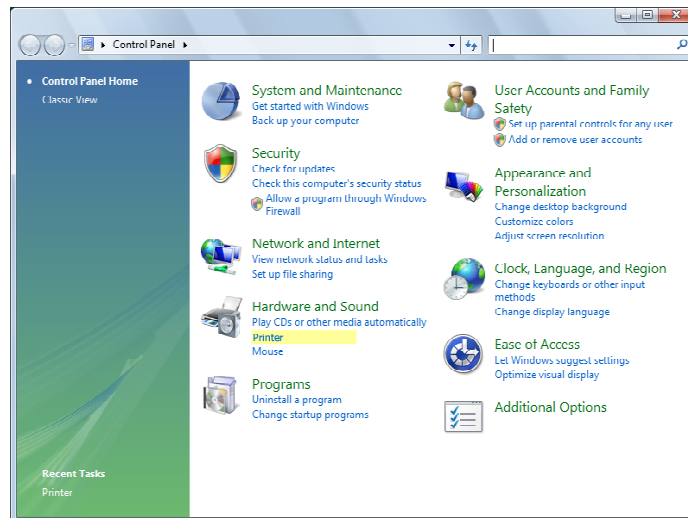


PRINTING A TEST PAGE AFTER INSTALLATION

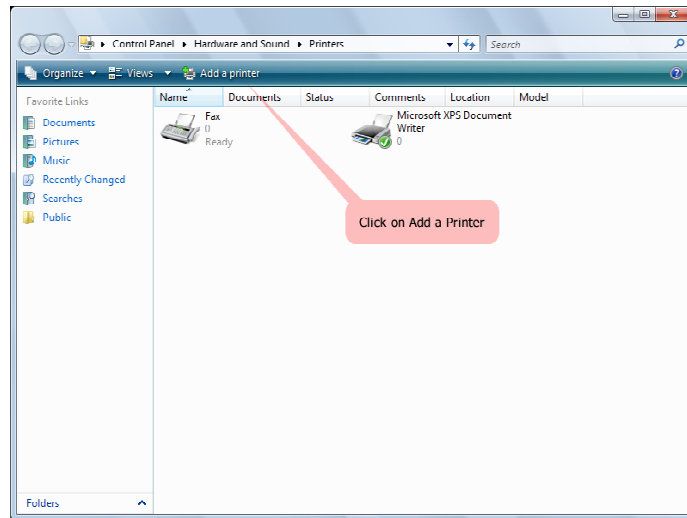
1. Open the Printers and Faxes page from Control Panel.
2. Right click on the new printer and click on Properties.
3. Click on the Print Test Page button on the Printer properties page, the test page will be printed on the network printer.

FOR WINDOWS VISTA

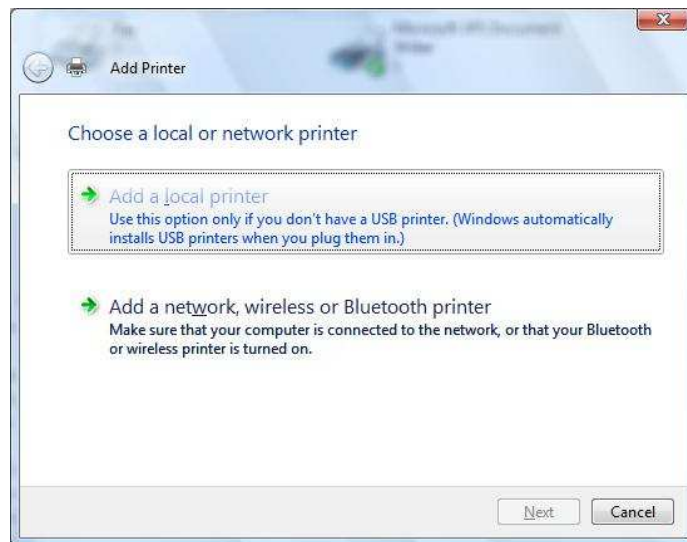
1. Click on the **Start Button**> **Control Panel**.
2. Click **Printer** under the **Hardware and Sound** category.



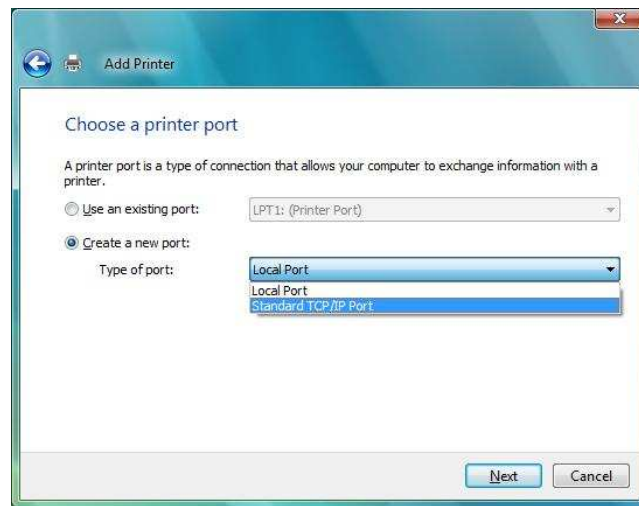
3. Click on **Add a Printer**.



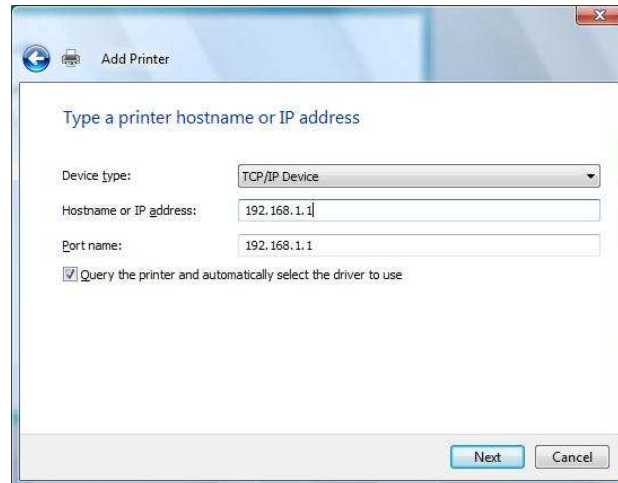
4. Click on **Add a local printer** then click **Next**.



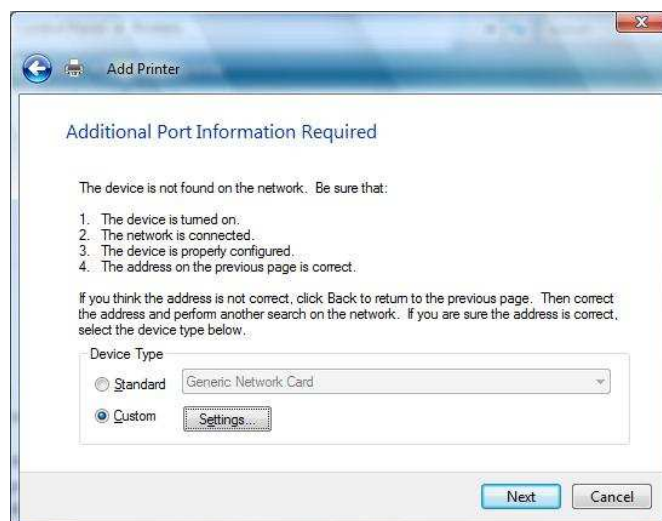
5. Select **Create a new port**, on the drop down box choose **Standard TCP/IP port** then click **Next**.



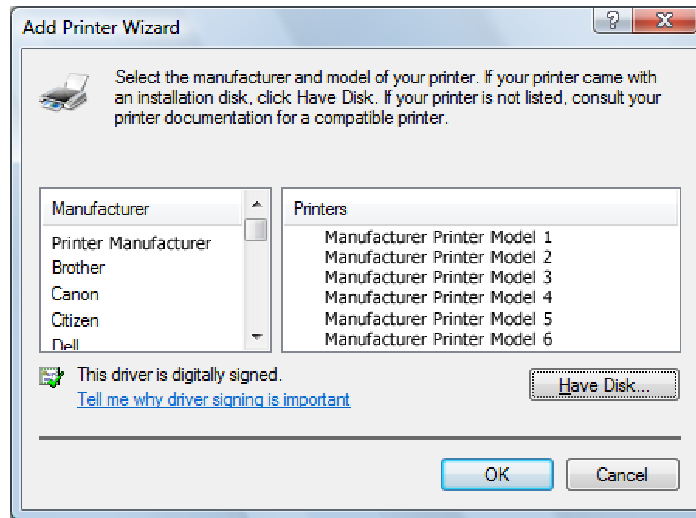
6. Enter the Default Gateway IP address of your HW550-3G router **192.168.2.1** then click **Next**.



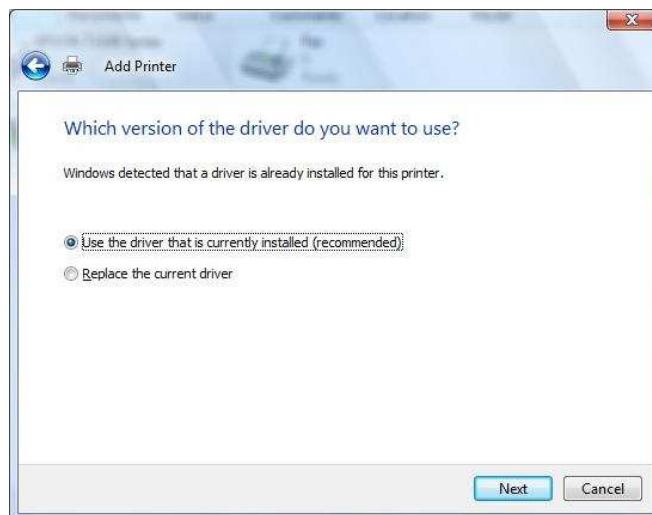
7. Under Additional Port Information Required window, select Custom then click **Next**.



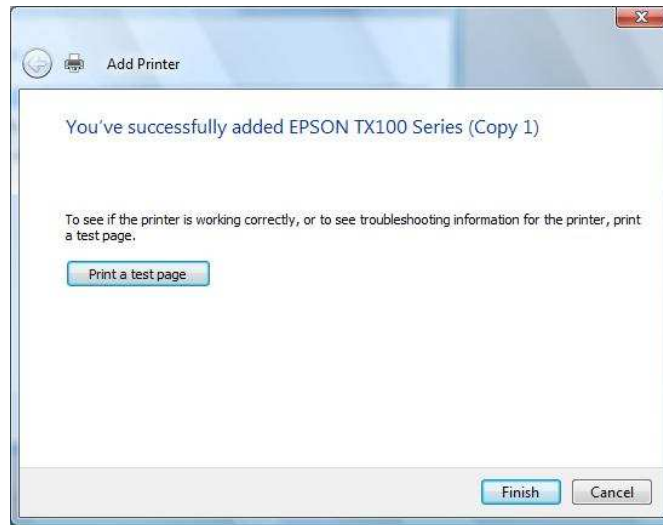
8. Once the computer detects the printer on the Print Server, it will ask for the printer manufacturer and model, a list of printers will be shown, select the your printer from the list and click **OK**.



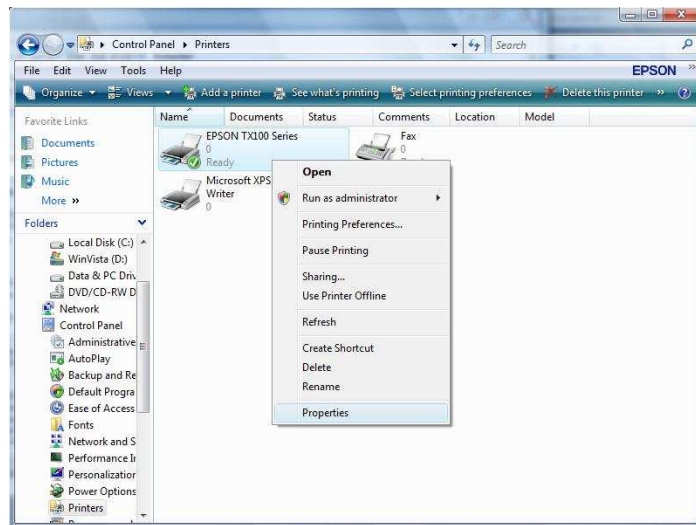
9. Select Use the driver that is currently installed then click **Next**.



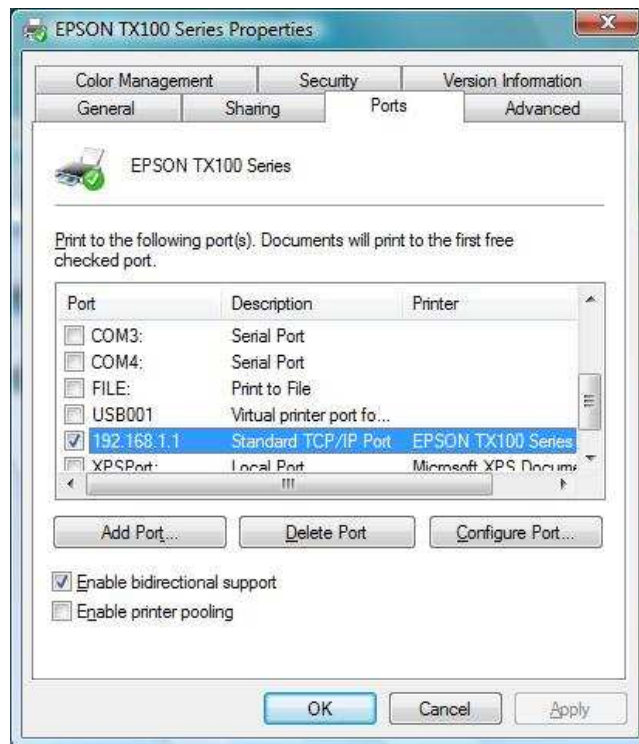
10. To print a test page click on Print a test page on the confirmation screen, click **Finish** to complete the installation.



11. If Printing was unsuccessful right click on the Printer's icon then select **Properties**.



12. Under printer's Properties click Port Tab and tick the IP address (192.168.2.1) that was set on previous settings then click **Apply**.



Note: Scanning, Faxing and Photocopying functions on Multifunction printers are not supported on the HW550-3G; Print function is the only feature that will work on these printers type when connected to the HW550-3G.

Wizard

This section will guide you on how to configure your HW550-3G to have an Internet connection.



Language and Time Zone

Select the Language and Time zone from the drop down box then click Next to continue.

Internet Connection Type

Select the Internet Connection type then click Next to Continue.

If you choose Mobile Broadband, you are required to have the following:

1. USB 3G Modem or USB EVDO Modem
2. Broadband data SIM card for USB 3G Modem

If you choose WAN, you are required to have the following:

1. DSL or cable modem.
2. Active Internet Account

Mobile Broadband

1. UMTS (3.5G)

- 3G Access Point Settings –Choose between List and Manual.
- List (recommended) will provide the APN set by your Internet Service Provider. Choose your Country, Internet Service Operator and the APN.
- Manual you need to manually key in the APN provided by your ISP. Some ISP may require a different name for your APN. Please contact your ISP if you don't have this information

- Username and Password – Some ISP may require a Username and Password set by the Operators. Please contact your ISP if you don't have this information
- 2. **CDMA 2000 (EVDO)**
 - Username and Password – Enter the required Username and Password set by the Operators. Please contact your ISP if you don't have this information
- 3. **Choose the your preferred Connection Method**
 - Connect Manually – you need to press the Connect button each time Internet connection is required.
 - Always connected – Internet connection is always ON. You need to manually press the disconnect button when Internet connection is not required.
- 4. **Dial Number**
 - Enter the required Dial Number set by the Operators. Please contact your ISP if you don't have this information.
- 5. **SIM PIN (UMTS 3.5G)**
 - Enter your SIM PIN on the required field; if you did not set any SIM PIN on your data broadband SIM card leave the field blank.

Ethernet WAN connection

On this section you can choose your Internet connection type from Static IP, PPPoE and DHCP.

1. Static IP

Select this Internet connection type if your ISP provides the IP addresses that are required to establish a connection.

- a.) IP Address - Enter the IP address provides by your ISP.
- b.) Subnet Mask - Enter the Subnet Mask provides by your ISP.
- c.) Default Gateway - Enter the Default Gateway provides by your ISP.
- d.) Primary DNS - Enter the Primary DNS server IP address provides by your ISP.
- e.) Secondary DNS - Enter the Secondary DNS server IP address provides by your ISP.

2. DHCP

Select this Internet connection type for your router to get an IP address from your ISP or the DHCP server.

- a.) Host name - Some ISP requires the host name of your router. You can change the current hostname of your router.
- b.) MAC clone - Some ISP requires that you register the MAC address of your computer. Tick the box to copy your PC's MAC address.
- c.) MAC Address - This is the computer's MAC address that is running the router.

3. PPPoE

Select this Internet connection type if your ISP provides you a username and password to establish a connection.

- a.) Username - Enter the username provided by your ISP
- b.) Password - Enter the password provided by your ISP

Note: Please contact your Internet Service Provider if you do not have this information.

Wireless

This section allows you to configure your basic wireless settings.

- a.) Wireless Enabled - Uncheck the box to disable your wireless connection.
- b.) Broadcast SSID Enabled - Uncheck the box to hide your HW550-3G wireless network name.
- c.) SSID - this is your HW550-3G wireless network name.
- d.) WPA Enabled - tick the box if you want to enable your wireless security. This will ensure wireless security on your network.
- e.) Passphrase - Enter the password that is required by your HW550-3G to connect via wireless.

Summary

This section will display the entire configuration that was set on your HW550-3G.

1. Language and Time Zone

This pane displays the time that you set on your HW550-3G.

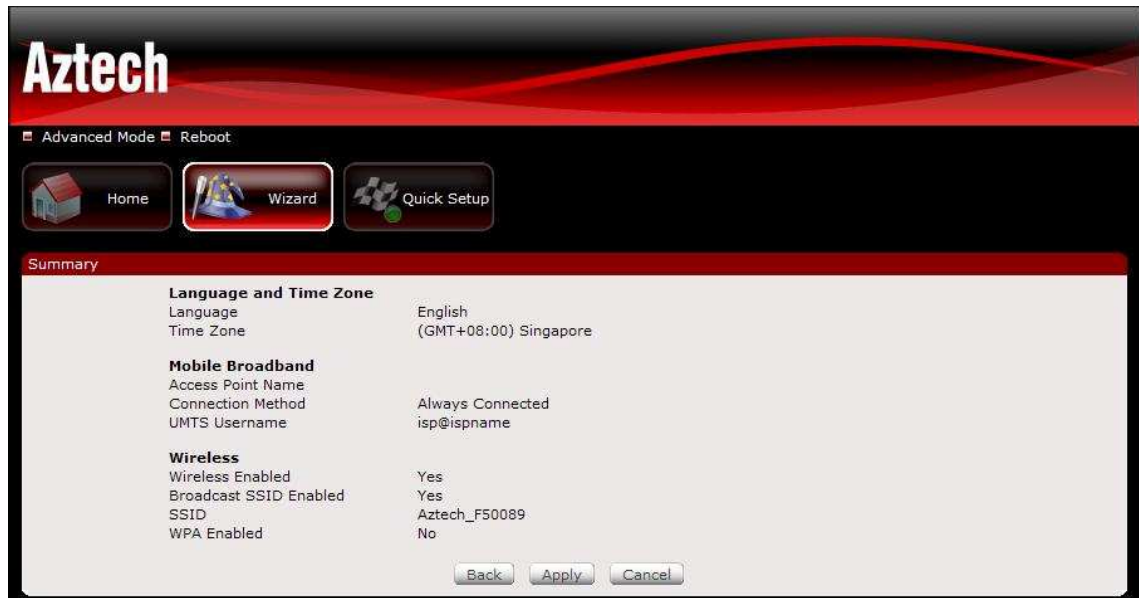
2. UMTS (WWAN)/WAN

This pane displays the Internet connection type that was set on your HW550-3G.

3. Wireless

This pane displays the basic settings of your HW550-3G wireless connection.

Click the Finish button for your settings to take effect.



Quick Setup

This section allows you to change the current settings of your HW550-3G without going to the step-by-step procedure on how to establish an Internet connection.

Aztech

Advanced Mode Reboot

Home Wizard Quick Setup

Quick Setup

Language and Time Zone
Language: English
Time Zone: (GMT+08:00) Singapore

Mobile Broadband/Ethernet WAN
WAN
Connection Type: ☒ Mobile Broadband ☐ Ethernet WAN
Network Type: UMTS (3.5G)
3G Access Point Settings: ☐ List ☒ Manual
APN (Access Point Name):
Username: isp@ispname
Password: ****
Connection Method: ☐ Connect Manually ☒ Always Connected ☐ Dial On Demand
Dial Number: *99***1#
SIM PIN:
Wireless
Wireless Enabled: ☒
SSID: Aztech_F500
WPA Enabled: ☐
Passphrase: 12345678
Broadcast SSID: ☒
Apply

Language and Time Zone

This pane displays the time that you set on your HW550-3G. Configure the settings then click the Apply button for the changes to take effect.

Mobile Broadband/Ethernet WAN

This pane displays the Internet connection type of your HW550-3G. You can choose between Mobile Broadband and Ethernet WAN connection. Configure the settings then click the Apply button for the changes to take effect.

Wireless

This pane displays the current Wireless settings of your HW550-3G. Configure the settings then click the Apply button for the changes to take effect.

Advanced Page

Network

The screenshot shows the Aztech Web GUI interface. At the top, there's a red header with the 'Aztech' logo. Below the header, there are navigation tabs: 'Basic Mode' and 'Reboot'. Underneath, there are four main menu items: 'Network' (selected), 'Wireless', 'Applications', and 'System'. Below these, there are sub-tabs for 'Local' and 'Internet'. The 'Network->Local' section is active, displaying a list of configuration fields with their current values and checkboxes. The fields are: Router IP Address (192.168.2.1), Router Subnet Mask (255.255.255.0), DHCP Enabled (checked), Start IP Address (192.168.2.2), End IP Address (192.168.2.254), Subnet Mask (255.255.255.0), Primary DNS Server (192.168.2.1), Secondary DNS Server (empty), Default Gateway (192.168.2.1), Lease Time (sec) (86400), and UPnP Enabled (checked). An 'Apply' button is located at the bottom right of the configuration area.

Field	Value
Router IP Address	192.168.2.1
Router Subnet Mask	255.255.255.0
DHCP Enabled	<input checked="" type="checkbox"/>
Start IP Address	192.168.2.2
End IP Address	192.168.2.254
Subnet Mask	255.255.255.0
Primary DNS Server	192.168.2.1
Secondary DNS Server	
Default Gateway	192.168.2.1
Lease Time (sec)	86400
UPnP Enabled	<input checked="" type="checkbox"/>

Local

This section allows you to configure your local network connection.

- Router IP Address – this is the router’s default IP address. Use this IP address to access the router’s Web GUI. Type the Router IP address 192.168.2.1 on your Web browser.
- Router Subnet Mask – this is the router’s subnet mask.
- DHCP Enabled- Your HW550-3G has a built in DHCP server. Your HW550-3G will automatically assign an IP address to all the computers that will connect to your network. Check the TCP/IP settings of your computer and make sure to set it on “Obtain an IP automatically”. Note that when you uncheck the button it will disable the DHCP server. You need to have another DHCP server or you need manually set the IP address of the computer when your DHCP is disabled.
- Start IP Address- This field specifies the first of the IP addresses in the IP address pool.
- End IP Address- This field specifies the last of the IP addresses in the IP address pool.
- Subnet Mask- Enter the Subnet Mask provides by your ISP.
- Primary DNS Server- Enter the Primary DNS server IP address provides by your ISP.
- Secondary DNS Server- Enter the Secondary DNS server IP address provides by your ISP.
- Default Gateway- Recommend to use the router’s LAN port IP address.

- Lease Time (sec)- this is the amount of time in which the user is allowed to use the current dynamic IP address.



Internet

This section allows you to choose the Internet connection type that you would like to use.

Mobile Broadband

1. UMTS (3.5G): This connection method requires the APN, Authentication Method, Connection Method and Dial number to establish an Internet connection.
 - a. **List** will provide the APN set by your Internet Service Provider. Choose your Country, Internet Service Operator and the APN.
 - b. **Manual** you need to manually key in the APN provided by your ISP. Some ISP may require a different name for your APN. Please contact your ISP if you don't have this information
2. CDMA 2000 (EVDO): This connection method requires the Authentication Method, Connection Method, Dial number, Username and Password to establish an Internet connection.
3. Authentication Method Choose between Auto (recommended), PAP and CHAP.
4. Connection Method
 - a. **Connect Manually** – you need to press the Connect button each time Internet connection is required.
 - b. **Always connected** – Internet connection is always ON. You need to manually press the disconnect button when Internet connection is not required.
5. Dial Number: Enter the dial number provides by your ISP to establish a connection. Different ISP may use different dial number. Please contact your ISP if you don't have this information.

6. Username – Enter the username provides by your ISP.
7. Password – Enter the password provides by your ISP.
8. SIM PIN (UMTS 3.5G) – Enter the SIM PIN that you set on your SIM card on the required field. Some broadband SIM card requires a PIN to unlock the SIM broadband account.

Note: Please contact your Internet Service Provider if you do not have this information.

Ethernet WAN

Static IP

Select this Internet connection type if your ISP provides the IP addresses that are required to establish a connection.

- IP Address: Enter the IP address provides by your ISP.
- Subnet Mask: Enter the Subnet Mask provides by your ISP.
- Default Gateway: Enter the Default Gateway provides by you r ISP.
- Primary DNS: Enter the Primary DNS server IP address provides by your ISP.
- Secondary DNS: Enter the Secondary DNS server IP address provides by your ISP.

DHCP

Select this Internet connection type for your router to get an IP address from your ISP or the DHCP server.

- Host name: Some ISP requires the host name of your router. You can change the current hostname of your router.
- MAC clone: Some ISP requires that you register the MAC address of your computer. Tick the box to copy your PC's MAC address.
- MAC Address: This is the computer's MAC address that is running the router.

PPPoE

Select this Internet connection type if you're ISP provides you a username and password to establish a connection.

- Username: Enter the username provides by your ISP
- Password: Enter the password provides by your ISP

Wireless



Settings

This section allows you to configure your basic wireless settings.

- Wireless Enabled- Uncheck the box to disable your wireless connection.
- SSID- this is your HW550-3G wireless network name.
- Broadcast SSID- Uncheck the box to hide your HW550-3G wireless network name.
- Wireless Mode – select the wireless connection mode on the drop down menu list. By default it is set to mixed mode.
- Channel- On the drop down box, select the operating frequency that you would like to use. By default it is set to channel 6. If you notice a lot of interference it is advisable to change the channel.



Security

This section allows you to set the wireless security setting of your network. Select the wireless security that you would like to set on your HW550-3G on the drop down menu lists.

- None

Select this if you want your wireless security to be disabled, it is advisable to Enable your wireless security to avoid unauthorized access to your network via wireless.

- WEP

Set the WEP key on the required field. This is the password that your HW550-3G will require to connect to it via wireless.

- WEP default key

You may choose from Hex to ASCII key format for your WEP key.

- WEP Key 1-4

Select the WEP that you will use to establish a connection between the router and client. Make sure that the WEP key will match on your wireless client's side. Enter the password in HEX (hexadecimal - using characters 0-9, A-F) or ASCII (alphanumeric characters) format.

- WPA; WPA2; WPA/WPA2

Enter the password in the required field between 8-63 characters long.

- TKIP; AES; TKIP/AES

Choose the encryption that you would like to use. By default it is set to TKIP.

- WiFi Protected Setup (WPS)

This allows you to Enable or Disable the WPS feature. Select from the drop down box to change the default settings then click the Apply button.

Note: WiFi Protected Setup (WPS) is not supported with WEP

- Router's PIN

The Router's PIN is unique for each device. Enter this PIN if your wireless client requires the Device's Password.

Applications

Aztech

Basic Mode Reboot

Network Wireless Applications System

Port Forwarding Filtering Dynamic DNS

Applications->Port Forwarding

Rule Name

IP Address

Port Range -

Protocol TCP & UDP

Add Rule

Note: Maximum of 30 entries

No rules found.

Applications->Port Forwarding->DMZ

DMZ Settings Enable

DMZ IP Address 192.168.2.1

Apply

Port forwarding

Multiple connections are required by some applications, such as Internet games, video conferencing, Internet telephony, and others. These applications have difficulties working through NAT (Network Address Translation). This section is used to open multiple ports or a range of ports in your router and redirect data through those ports to a single PC on your network. You can enter ports in various formats:

1. Rule Name – enter the rule name in the Rule Name box.
2. IP Address - enter the local network IP address of the device that you would like to port forward.
3. Port Range – enter the port number that you would like open on the required field
4. Protocol – choose the protocol that you would like to open then click Apply for the settings to take effect.

DMZ

This section allows you to Enable or Disable the DMZ settings. It also allows you to set a single PC on your network to have an unrestricted Internet access.

1. DMZ Settings choose Enable to enable the feature.
2. DMZ IP Address enter the Local IP address that you would to have an unrestricted Internet access.
Click Apply for the settings to take effect.

Aztech

Basic Mode Reboot

Network Wireless Applications System

Port Forwarding Filtering Dynamic DNS

Applications->Filtering->MAC/IP Filtering

Filter Type: IP Filtering

Rule Name: PC1

IP Address (LAN): 192.168.2.6

Protocol: ☒ All ☐ TCP ☐ UDP ☐ ICMP

Port Range: -

Add Rule

Note: Maximum of 30 entries

No	Rule Name	MAC/IP Address	Port Range	Protocol	Delete Rule
1	Test	192.168.2.4	21 - 21	TCP	Delete

Applications->Filtering->URL Filtering

URL Address: www.xx

Add Rule

No	URL	Delete Rule
1	www.xxx.com	Delete

Filtering

This section allows you to configure MAC filtering, IP filtering and URL filtering. By default HW550-3G will block all the MAC Addresses, IP Addresses and URL from accessing the specific rule/port set on the router.

MAC Address Filtering

This section enables both Port and MAC filtering. MAC filtering allows you to assign different network access based on the unique MAC addresses of the devices connected to the router.

1. On the Filter Type drop down box select MAC Address Filtering.
2. Enter the MAC address of the device that you would like to filter.
3. Enter the Rule name on the required field (example Bob's PC).
4. Choose the protocol that you would like to filter.
5. Enter the port number in the required field. Click Apply for the settings to take effect.

IP Filtering

This section enables both Port and IP filtering. IP filtering allows you to assign different network access based on the IP addresses of the devices connected to the router.

1. On the Filter Type drop down box select IP Address Filtering.
2. Enter the IP address of the device that you would like to filter.
3. Enter the Rule name on the required field (example Bob PC).
4. Choose the protocol that you would like to filter.
5. Enter the port number in the required field. Click Apply for the settings to take effect.

Note: All incoming access on your network is blocked. If you want to have an access within your network from WAN please use Port Forwarding.

URL Filtering

This section allows you to control the access to a certain Websites on the Internet by entering URL name on the required field.

1. Enter the domain name on the URL address field (www.xxx.com or www.xxx.net). Click Apply for the settings to take effect.



DDNS (Dynamic DNS)

DDNS allows you to assign a fixed domain and host name to a dynamic Internet IP addresses.

1. Choose your DDNS service provider from the drop down box.
2. Enter the username of your DDNS account.
3. Enter the password of your DDNS account.

4. Enter the Domain Name that you received from the Dynamic DNS provider (xxx.domainname.com). Click Apply for the settings to take effect.

System



System Information

This section shows the current firmware information and the router's MAC addresses.



Settings

This section allows you to Back up, Save and Restore to factory default the router's configuration.

Backup

Click the 'Backup' button to save the current settings of your router. If you will change the current configuration of your HW550-3G it is recommended that you backup the router's current settings.

Restore

Click the browse button and select the saved configuration setting of the router then click 'Restore'. This allows you to load the restored configuration file of your router.

Restore to factory default

Click the 'Reset' button to reset the router's configuration back to its Factory Default settings.

Firmware Upgrade

This section allows you to upload the latest firmware for your router. Please make sure that you download the correct firmware from the product support website.



Reboot

Click the 'Reboot' button to reboot the device



Password

This section allows you to change the default password setting of the router to access the Web GUI.



1. Enter the new password on the required field then click Apply.
2. Once the setting is applied, on the authentication login page enter the Username and new Password to access the router's WEB UI.

Regulatory Compliance Notices

FCC Notice

This equipment has been tested and found to comply with the limits for a Class B digital device, pursuant to Part 15, 22 and 24 of the FCC Rules. These limits are designed to provide reasonable protection against harmful interference in a residential installation. This equipment generates, uses, and can radiate radio frequency energy and, if not installed and used in accordance with the instructions, may cause harmful interference to radio communications. However, there is no guarantee that interference will not occur in a particular installation. If this equipment does cause harmful interference to radio or television reception, which can be determined by turning the equipment off and on, the user is encouraged to try to correct the interference by one or more of the following measures:

- Reorient or relocate the receiving antenna.
- Increase the separation between the equipment and receiver.
- Connect the equipment into an outlet on a circuit different from that to which the receiver is connected.
- Consult the dealer or an experienced radio or television technician for help.

Modifications

The FCC requires the user to be notified that any changes or modifications made to this device that are not expressly approved by Aztech could void the user's authority to operate the equipment.

This device complies with Part 15 of the FCC rules.

This device complies with Part 15 of the FCC rules. Operation is subject to the following two conditions:

1. This device may not cause harmful interference, and
2. This device must accept any interference received, including interference that may cause undesired operation.

Exposure Information to Radio Frequency Energy

This equipment complies with FCC radiation exposure limits set forth for an uncontrolled environment. This equipment should be installed and operated with minimum distance of 20 cm between the radiator and your body.

European Regulations

The product has been designed, tested and manufactured according to the European R&TTE directive 1999/5/EC.

