





Quick Installation Guide  

TEW-658BRM
1.01

Table of Contents

English	1
1. Before You Start	1
2. Hardware Installation	7
3. Configure the Modem	8
.....	
Troubleshooting	13
Wireless Tips	16



Package Contents

- TEW-658BRM
- CD-ROM (User's Guide)
- Multi-Language Quick Installation Guide
- Network Cable (1.5m/4.9ft)
- RJ-11 Telephone Cable (1m/3ft)
- Power Adapter (12V DC, 1A)

System Requirements

- A working ADSL Internet Connection
- A computer with a wired or wireless network adapter properly installed.
- Web Browser such as Internet Explorer 6.0 and above, Firefox 2.0 and above or Chrome

Collect Internet Service Provider (ISP) Information

Please verify your DSL Internet broadband connection type with your ISP and ensure you have all the information for one of the following connection types:

1. PPPoE (RFC-2516 PPP over Ethernet)

- VPI: _____ (0~255)
- VCI: _____ (32~65535)
- Encapsulation (LLC or VCMUX)
- ATMQoS (UBR, CBR, VBR-nrt, VBR-rt)
- Peak Cell Rate: _____ (0~6000 cells/s)
- Maximum Burst Size: _____ (0~65535 Cells)(VBR-nrt/VBR-rt ATMQoS only)
- Sustainable Cell Rate: _____ (0~65535 cells)(VBR-nrt/VBR-rt ATMQoS only)
- Enable Default VLAN (Enable/Disable)
- PPPoE PassThrough (Enable/Disable)
- State of Connection (Enable/Disable)
- IPMode of Connection (Dynamic/Static)
- IP Address: _____ (Static IPMode only)
- Subnet Mask: _____ (Static IPMode only)
- Name: _____
- NAT (Enable/Disable)
- User Name: _____
- User Password: _____
- Confirm Password: _____
- Max MRU: _____ (576~1492)
- DNS Enabled (Enable/Disable)
- DNS Override Allowed (Enable/Disable)
- DNS Server 1: _____ (optional)
- DNS Server 2: _____ (optional)
- PPPoE Service Name: _____ (optional)
- Mac Address: _____
- PPPoE AC Name: _____ (optional)
- Connection Trigger (OnDemand/ AlwaysOn/ Manual)
- Idle Disconnect Time (30~3600 seconds)
- As system default route (Current setting : pppoe) (Setup → Internet Setup)
- ICMP Reply Enable (Setup → Internet Setup)
- LCP Interval (0~86400 seconds)
- Proxy ARP Enable

2. PPPoA (RFC-2364 PPP over ATM)

- VPI: _____ (0~255)
- VCI: _____ (32~65535)
- Encapsulation (LLC or VCMUX)
- ATMQoS (UBR, CBR, VBR-nrt, VBR-rt)
- Peak Cell Rate: _____ (0~6000 cells/s)
- Maximum Burst Size: _____ (0-65535 Cells)(VBR-nrt/VBR-rt ATMQoS only)
- Sustainable Cell Rate: _____ (0~65535 cells)(VBR-nrt/VBR-rt ATMQoS only)
- Enable Default VLAN (Enable/Disable)
- PPPoE PassThrough (Enable/Disable)
- State of Connection (Enable/Disable)
- IPMode of Connection (Dynamic/Static)
- IP Address: _____ . _____ . _____ . _____
- Subnet Mask: _____ . _____ . _____ . _____
- Name: _____
- NAT (Enable/Disable)
- User Name: _____
- User Password: _____
- Confirm Password: _____
- Max MRU: _____ (576~1492)
- DNS Enabled (Enable/Disable)
- DNS Override Allowed (Enable/Disable)
- DNS Server 1: _____ . _____ . _____ . _____ (optional)
- DNS Server 2: _____ . _____ . _____ . _____ (optional)
- Connection Trigger (OnDemand/ AlwaysOn/ Manual)
- Idle Disconnect Time (30~3600 seconds)
- LCP Interval: _____ (0~86400 seconds)
- As system default route (Current setting : pppoe) (Setup → Interent Setup)
- ICMP Reply Enable (Setup → Interent Setup)
- Proxy ARP Enable

3. IPoA (RFC-1483 Routed)

- VPI: _____ (0~255)
- VCI: _____ (32~65535)
- Encapsulation (LLC or VCMUX)
- ATMQoS (UBR, CBR, VBR-nrt, VBR-rt)
- Peak Cell Rate: _____ (0~6000 cells/s)
- Maximum Burst Size: _____ (0-65535 Cells)(VBR-nrt/VBR-rt ATMQoS only)
- Sustainable Cell Rate: _____ (0~65535 cells)(VBR-nrt/VBR-rt ATMQoS only)
- Enable Default VLAN (Enable/Disable)
- PPPoE PassThrough (Enable/Disable)

- State of Connection (Enable/Disable)
- Name: _____
- NAT (Enable/Disable)
- Address Type (DHCP/Static)
- External IP Address: _____
- Subnet Mask: _____
- Default Gateway: _____
- DNS Enabled (Enable/Disable)
- DNS Override Allowed (Enable/Disable)
- DNS Server 1: _____ (optional)
- DNS Server 2: _____ (optional)
- As system default route (Current setting : pppoe) (Setup → Interent Setup)
- ICMP Reply Enable (Setup -> Interent Setup)
- Proxy ARP Enable

4. Dynamic IP Address (IPoEoA/MER (MAC Encapsulated Routed) with DHCP)

- VPI: _____ (0~255)
- VCI: _____ (32~65535)
- Encapsulation: _____ (LLC or VCMUX)
- ATMQoS (UBR, CBR, VBR-nrt, VBR-rt)
- Peak Cell Rate: _____ (0~6000 cells/s)
- Maximum Burst Size: _____ (0~65535 Cells)(VBR-nrt/VBR-rt ATMQoS only)
- Sustainable Cell Rate: _____ (0~65535 cells)(VBR-nrt/VBR-rt ATMQoS only)
- Enable Default VLAN (Enable/Disable)
- PPPoE PassThrough (Enable/Disable)
- State of Connection (Enable/Disable)
- Name: _____
- NAT (Enable/Disable)
- Address Type (DHCP/Static)
- DNS Enabled (Enable/Disable)
- DNS Override Allowed (Enable/Disable)
- DNS Server 1: _____ (optional)
- DNS Server 2: _____ (optional)
- Mac Address: _____
- Option 125 (Enable/Disable)
- Option 60 Vendor ID: _____ (optional)
- Option 61 IAID: _____ (optional)
- Option 61 DUID : _____ (optional)
- As system default route (Current setting : pppoe) (Setup → Interent Setup)
- ICMP Reply Enable (Setup -> Interent Setup)
- Proxy ARP Enable

5. Static IP Address

- VPI: _____ (0~255)
- VCI: _____ (32~65535)
- Encapsulation (LLC or VCMUX)
- ATMQoS (UBR, CBR, VBR-nrt, VBR-rt)
- Peak Cell Rate: _____ (0~6000 cells/s)
- Maximum Burst Size: _____ (0-65535 Cells)(VBR-nrt/VBR-rt ATMQoS only)
- Sustainable Cell Rate: _____ (0~65535 cells)(VBR-nrt/VBR-rt ATMQoS only)
- Enable Default VLAN (Enable/Disable)
- PPPoE PassThrough (Enable/Disable)
- State of Connection (Enable/Disable)
- Name: _____
- NAT (Enable/Disable)
- Address Type (DHCP/Static)
- External IP Address: _____ . _____ . _____ . _____
- Subnet Mask: _____ . _____ . _____ . _____
- Default Gateway: _____ . _____ . _____ . _____
- DNS Enabled (Enable/Disable)
- DNS Override Allowed (Enable/Disable)
- DNS Server 1: _____ . _____ . _____ . _____ (optional)
- DNS Server 2: _____ . _____ . _____ . _____ (optional)
- Mac Address: _____
- As system default route (Current setting : pppoe) (Setup → Interent Setup)
- ICMP Reply Enable (Setup -> Interent Setup)
- Proxy ARP Enable

6. Bridge Mode (RFC-1483 Bridged)

- VPI: _____ (0~255)
- VCI: _____ (32~65535)
- Encapsulation (LLC or VCMUX)
- ATMQoS (UBR, CBR, VBR-nrt, VBR-rt)
- Peak Cell Rate: _____ (0~6000 cells/s)
- Maximum Burst Size: _____ (0-65535 Cells)(VBR-nrt/VBR-rt ATMQoS only)
- Sustainable Cell Rate: _____ (0~65535 cells)(VBR-nrt/VBR-rt ATMQoS only)
- Enable Default VLAN (Enable/Disable)
- PPPoE PassThrough (Enable/Disable)
- State of Connection (Enable/Disable)
- Name: _____

7. CIP (RFC-1577 Classic IP/ARP over ATM)

- VPI: _____ (0~255)
- VCI: _____ (32~65535)
- Encapsulation (LLC or VCMUX)
- ATMQoS (UBR, CBR, VBR-nrt, VBR-rt)
- Peak Cell Rate: _____ (0~6000 cells/s)
- Maximum Burst Size: _____
(0-65535 Cells)(VBR-nrt/VBR-rt ATMQoS only)
- Sustainable Cell Rate: _____
(0~65535 cells)(VBR-nrt/VBR-rt ATMQoS only)
- Enable Default VLAN (Enable/Disable)
- PPPoE PassThrough (Enable/Disable)
- State of Connection (Enable/Disable)
- Name: _____
- NAT (Enable/Disable)
- Address Type (DHCP/Static)
- External IP Address: _____
- Subnet Mask: _____
- Default Gateway: _____
- DNS Enabled (Enable/Disable)
- DNS Override Allowed (Enable/Disable)
- DNS Server 1: _____ (optional)
- DNS Server 2: _____ (optional)
- As system default route (Current setting : pppoe)
(Setup → Interent Setup)
- ICMP Reply Enable (Setup -> Interent Setup)
- Proxy ARP Enable

2. Hardware Installation

ENGLISH

FRANÇAIS

DEUTSCH

ESPAÑOL

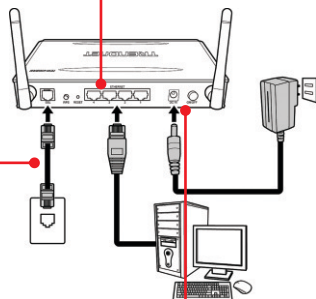
РУССКИЙ

1. Connect one end of the Network cable to one of the TEW-658BRM's LAN ports. Connect the other end of cable to the computer's Ethernet port.

2. Connect one end of the RJ-11 telephone cable to the TEW-658BRM's ADSL port. Connect the other end of the cable to the phone jack.

3. Connect the Power Adapter to the TEW-658BRM and then to a power outlet. Push the power button to the "On" position. Wait for about 20 seconds.

4. Verify that the following panel lights are on: **Power (Green)**, **LAN 1~4 (Green)** (port your computer is connected to), **Wireless (Green)** and **DSL (Green)**. Please see trouble shooting section for additional information on LED behaviors.



3. Configure the Modem

Note: It is recommended that you configure the Modem from a wired computer.

1. Open your web browser, type `http://192.168.10.1` in the Address bar, and then press **Enter**.



2. Enter the User Name and password and then click **OK**. By default:

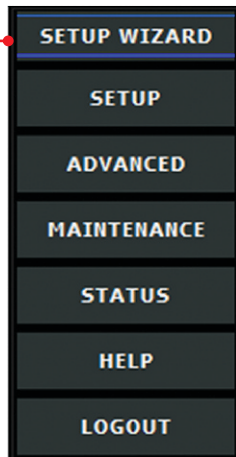
User name: **admin**

Password: **admin**

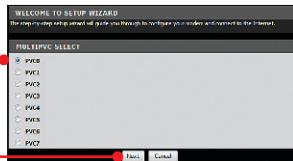
Note: User name and Password are case sensitive.



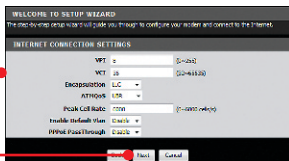
3. The Setup wizard will automatically appear. Click **Setup Wizard** if the Setup Wizard does not automatically appear.



4. Select **PVCO** and click **Next**.

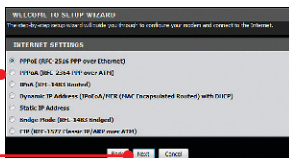


5. Configure the settings based on information provided by your ISP. Then Click **Next**.



Note: In the example below, the ADSL connection type is PPPoE.

6. Select the desired ADSL connection type and then click **Next**.

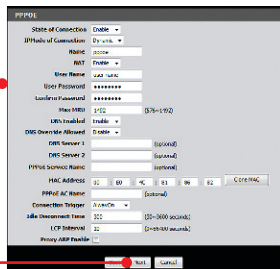


7. Configure the settings based on information provided by your ISP. Then click Next. In most cases for PPPoE connection method, you need to configure the following and typically the remaining default settings should be fine.
User Name
User Password
Mac Address (Clone Mac)

If Static is selected for IPMode of Connection you would need to configure the following:

IP address: The assigned IP address should match your network. This IP address should not be used by any other network device on your network.

Subnet Mask: In most cases, the default Subnet Mask (255.255.255.0) should be fine.



Note:

1. For Connection Trigger, select Continuous to keep the Internet connection always on.
2. Idle Disconnect allows you to configure an auto-disconnect time in seconds (30-3600). The TEW-658BRM will automatically disconnect from the Internet if no Internet activity has been detected within the period of Idle Disconnect entered.

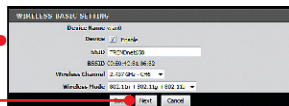
8. Configure the following for **Wireless Basic Setting** and then click **Next**.

Device: check Enable. Select Disable if you do not want any wireless computers or device to connect to this device.

SSID: The SSID is the wireless network name of your wireless network (e.g. wireless router or access point). Enter a unique SSID (Network Name). Do not use anything that would be identifying like "Smith Family Network". Choose something that you would easily identify when searching for available wireless networks.

Wireless Channel: In most cases, the default channel is fine.

Wireless Mode: In most cases, the default mode is fine.



Note:

1. To protect your network from any unauthorized access it is recommended to enable wireless encryption.
2. Once encryption is enabled on the router, each wireless computer and device must be configured with the same encryption key.
3. The example below is for WPA2-PSK security. If you select WPA-PSK or WPA2-PSK, make sure your wireless adapters support WPA or WPA2. If your wireless adapters do not support WPA or WPA2, then select WEP.

9. Configure the following for security configuration:

Security Mode: WPA2

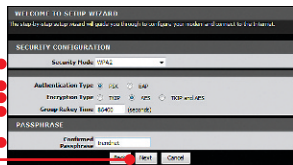
Authentication Type: PSK

Encryption Type: AES

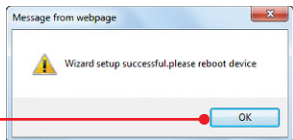
Group Rekey Time: In most cases, the default time is fine.

Confirmed Passphrase: Enter an encryption key. For Example: trendnet

Then click **Next**. For WPA-PSK or WPA2-PSK, the Pre-Shared Key must be between 8 and 63 ASCII or 64 HEX characters. Make sure to copy down the encryption key.



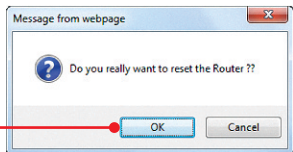
10. Click **OK**.



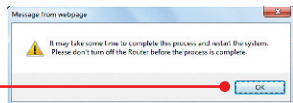
11. Click **Reboot**.



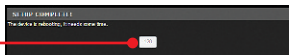
12. Click **OK**.



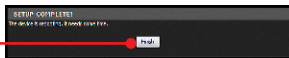
13. Click **OK**.



14. Please wait while the TEW-658BRM reboots.



15. Click Finish.



16. Verify that the following panel lights are on: DSL(Green) and Internet (Green).

17. Open up your browser and enter in a URL (e.g. www.trendnet.com) to verify that you have Internet connection.



Your configuration is now complete

For detailed information regarding the **TEW-658BRM's** configuration and advanced settings, please refer to the Troubleshooting section, User's Guide on the Utility CD-ROM, or TRENDnet's website at <http://www.trendnet.com>.

Register Your Product

To ensure the highest level of customer service and support, please take a moment to register your product Online at: www.trendnet.com/register

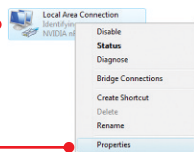
Thank you for choosing TRENDnet

1. I typed `http://192.168.10.1` in my Internet Browser's Address Bar, but an error message says "The page cannot be displayed." How can I get into the TEW-658BRM's web configuration page?

1. Check your hardware settings again by following the instructions in section 2.
2. Make sure the **Power**, **LAN** and **Wireless** lights are lit.
3. Make sure your TCP/IP settings are set to Obtain an IP address automatically (see the steps below).
4. If you are still having issues reset the TEW-658BRM. To reset the TEW-658BRM, take a pin or paperclip and press the reset button on the back of the Wireless Modem for 15 seconds. Then let go.

Windows 7

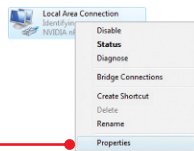
1. Go into the **Control Panel**, click **Network and Internet**, click **Network and Sharing Center**, click **Change Adapter Settings** and then right-click the **Local Area Connection** icon and then click **Properties**.



2. Click **Internet Protocol Version 4(TCP/IPv4)** and then click **Properties**. Then click on **Obtain an IP address automatically**.

Windows Vista

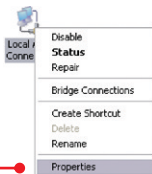
1. Go into the **Control Panel**, click **Network and Internet**, click **Network and Sharing Center**, click **Manage Network Connections** and then right-click the **Local Area Connection** icon and then click **Properties**.



2. Click **Internet Protocol Version 4(TCP/IPv4)** and then click **Properties**. Then click on **Obtain an IP address automatically**.

Windows XP/2000

1. Go into the **Control Panel**, double-click the **Network Connections** icon and then right-click the **Local Area Connection** icon and then click **Properties**.



2. Click **Internet Protocol (TCP/IP)** and then click **Properties**. Then click on **Obtain an IP address automatically**.

2. All the settings are correct, but I cannot make a wireless connection to the Modem. What should I do?

1. Double check that the Wireless LED on the Modem is lit.
2. Power cycle the Modem. Unplug the power to the Modem. Wait 15 seconds, then plug the power back in.
3. Contact the manufacturer of your wireless network adapter. Make sure the wireless network adapter is configured with the proper SSID. The default SSID of the TEW-658BRM is TRENDnet658. If you have enabled any encryption on the Wireless Modem, make sure to configure the wireless network adapter with the same encryption key.
4. Please refer to the Wireless tips section if you continue to have wireless connectivity problems.

3. All the settings are correct, but I am having problems going to the Internet. What should I do?

1. Double check that the LED's on the Modem are correctly lit. Please refer to the LED behavior chart.
2. Make sure your DSL Internet connection settings and account information are correct
3. Make sure that you're DSL account is active
4. Power cycle the Modem. Unplug the power to the Modem. Wait 15 seconds, then plug the power back in.

4. I forgot my login password. What should I do?

Take a pin or paperclip and press the reset button on the back of the Wireless Modem for 15 seconds. Then let go. This will return all settings to factory default. The default user name and password is admin.

5. LED behavior

LED	Activity	Status
Power	Off	Device is off
	On (solid)	Device is on
LAN 1-4	Off	No active device is connected
	On (solid)	Active device is connected, no activity
	On (blinking)	Active device is connected with activity (data transfers)
Wireless	Off	Wireless network turned off
	On (blinking)	Wireless network is on
WPS	Off	WPS feature is inactive
	On (blinking)	WPS authentication in process
	On (solid)	WPS authentication process complete
DSL	Off	RJ-11 cable disconnected
	On (blinking)	DSL authentication in process, data transfer activity
	On (solid)	DSL authentication process complete
Internet	Off	No DSL authentication
	On (blinking)	Internet data transfer activity
	On (solid)	Internet connection ready

If you still encounter problems or have any questions regarding the **TEW-658BRM**, please contact TRENDnet's Technical Support Department.

The following are some general wireless tips to help minimize the impact of interference within an environment.

Assign your network a unique SSID

Do not use anything that would be identifying like “Smith Family Network”. Choose something that you would easily identify when searching for available wireless networks.

Do not turn off the SSID broadcast

The SSID broadcast is intended to be on and turning it off can cause connectivity issues. The preferred method of securing a wireless network is to choose a strong form of encryption with a strong and varied encryption key.

Note: after setting up the SSID, encryption type and encryption key/passphrase, please make a note of them for future reference. You will need this information to connect your wireless computers to the wireless router/access point.

Change the channel

Most wireless access points and routers are defaulted to channel 6. If you have a site survey tool that will display the channels you can plan your channel selection around neighboring access points to minimize interference from them. If your site survey tool does not display the channel try using channels 1 or 11.

Change the channel bandwidth

If you are using 802.11n you should be securing the network with WPA2-AES security.

Note: Due to Wi-Fi certification considerations if you choose WEP, WPA or WPA2-TKIP encryption this device may operate in legacy wireless mode (802.11b/g). You may not get 802.11n performance as these forms of encryption are not supported by the 802.11n specification.

Avoid stacking hardware on top of each other to prevent overheating issues

Maintain enough free space around the hardware for good ventilation and airflow. There should also be plenty of free space around the antennas to allow the wireless signal to propagate. Please also make sure that the wireless hardware is not placed in any type of shelving or enclosures.

There are a number of other environmental factors that can impact the range of wireless devices.

1. Adjust your wireless devices so that the signal is traveling in a straight path, rather than at an angle. The more material the signal has to pass through the more signal you will lose.
2. Keep the number of obstructions to a minimum. Each obstruction can reduce the range of a wireless device. Position the wireless devices in a manner that will minimize the amount of obstructions between them.

3. Building materials can have a large impact on your wireless signal. In an indoor environment, try to position the wireless devices so that the signal passes through less dense material such as dry wall. Dense materials like metal, solid wood, glass or even furniture may block or degrade the signal.
4. Antenna orientation can also have a large impact on your wireless signal. Use the wireless adapter's site survey tool to determine the best antenna orientation for your wireless devices.
5. Interference from devices that produce RF (radio frequency) noise can also impact your signal. Position your wireless devices away from anything that generates RF noise, such as microwaves, HAM radios, Walkie-Talkies and baby monitors.
6. Any device operating on the 2.4GHz frequency will cause interference. Devices such as 2.4GHz cordless phones or other wireless remotes operating on the 2.4GHz frequency can potentially drop the wireless signal. Although the phone may not be in use, the base can still transmit wireless signals. Move the phone's base station as far away as possible from your wireless devices.

If you are still experiencing low or no signal consider repositioning the wireless devices or installing additional access points. The use of higher gain antennas may also provide the necessary coverage depending on the environment.

Declaration of Conformity



Company Information:

Company Name:
TRENDnet, Inc.

Company Address:
20675 Manhattan Place
Torrance, CA 90501
USA

Product Information:

Product Description:
300Mbps Wireless N ADSL2/2+ Modem Router



Model Number:
TEW-658BRM

Brand name:
TRENDnet

Technical Standards:

EN 300 328 V1.7.1: 10-2006
EN 301 489-1 V1.8.1: 04-2008
EN 301 489-17 V2.1.1: 05-2009
EN 50385 : 2002
EN 60950-1 : 2006 + A11 : 2009

Declaration:

The product is herewith confirmed to comply with the requirements of Directive 1999/5/EC of the Council (European Parliament) on the radio and telecommunications terminal equipment and Energy-related products Directive 2009/125/EC.

I hereby declare that the products and devices mentioned above are consistent with the standards and provisions of the guidelines.

Sonny Su

Full Name

February 10, 2011

Date

Director of Technology

Position / Title

Signature

GPL/LGPL General Information

This TRENDnet product includes free software written by third party developers. These codes are subject to the GNU General Public License ("GPL") or GNU Lesser General Public License ("LGPL"). These codes are distributed WITHOUT WARRANTY and are subject to the copyrights of the developers. TRENDnet does not provide technical support for these codes. The details of the GNU GPL and LGPL are included in the product CD-ROM.

Please also go to (<http://www.gnu.org/licenses/gpl.txt>) or (<http://www.gnu.org/licenses/lgpl.txt>) for specific terms of each license.

The source codes are available for download from TRENDnet's web site (http://trendnet.com/downloads/list_gpl.asp) for at least three years from the product shipping date.

You could also request the source codes by contacting TRENDnet.

20675 Manhattan Place, Torrance, CA 90501, USA. Tel: +1-310-961-5500 Fax: +1-310-961-5511

Informations générales GPL/LGPL

Ce produit TRENDnet comprend un logiciel libre écrit par des programmeurs tiers. Ces codes sont sujet à la GNU General Public License ("GPL" Licence publique générale GNU) ou à la GNU Lesser General Public License ("LGPL" Licence publique générale limitée GNU). Ces codes sont distribués SANS GARANTIE et sont sujets aux droits d'auteurs des programmeurs. TRENDnet ne fournit pas d'assistance technique pour ces codes. Les détails concernant les GPL et LGPL GNU sont repris sur le CD-ROM du produit.

Veuillez également vous rendre en (<http://www.gnu.org/licenses/gpl.txt>) ou en (<http://www.gnu.org/licenses/lgpl.txt>) pour les conditions spécifiques de chaque licence.

Les codes source sont disponibles au téléchargement sur le site Internet de TRENDnet web site (http://trendnet.com/downloads/list_gpl.asp) durant au moins 3 ans à partir de la date d'expédition du produit.

Vous pouvez également demander les codes source en contactant TRENDnet.

20675 Manhattan Place, Torrance, CA 90501, USA. Tel: +1-310-961-5500 Fax: +1-310-961-5511

Allgemeine Informationen zu GPL/LGPL

Dieses Produkt enthält die freie Software "netfilter/iptables" (© 2000-2004 netfilter project <http://www.netfilter.org>) und die freie Software "Linux_mtd" (Memory Technology Devices) Implementation (© 2000 David Woodhouse), erstmals integriert in Linux Version 2.4.0-test 3 v. 10.07.2000 (<http://www.kernel.org/pub/linux/kernel/v2.4/old-test-kernels/linux-2.4.0-test3.tar.bz2>), sowie weitere freie Software. Sie haben durch den Erwerb dieses Produktes keinerlei Gewährleistungsansprüche gegen die Berechtigten an der oben genannten Software erworben; weil diese die Software kostenfrei lizenzieren gewähren sie keine Haftung gemäß unten abgedruckten Lizenzbedingungen. Die Software darf von jedermann im Quell- und Objektcode unter Beachtung der Lizenzbedingungen der GNU General Public License Version 2, und GNU Lesser General Public License (LGPL) vervielfältigt, verbreitet und verarbeitet werden. Die Lizenz ist unten im englischsprachigen Originalwortlaut wiedergegeben. Eine nichtoffizielle Übersetzung in die deutsche Sprache finden Sie im Internet unter (<http://www.gnu.de/documents/gpl-2.0.de.html>). Eine allgemeine öffentliche GNU Lizenz befindet sich auch auf der mitgelieferten CD-ROM.

Sie können Quell- und Objektcode der Software für mindestens drei Jahre auf unserer Homepage www.trendnet.com im Downloadbereich (http://trendnet.com/langen/downloads/list_gpl.asp) downloadend. Sofern Sie nicht über die Möglichkeit des Downloads verfügen können Sie bei TRENDnet.

20675 Manhattan Place, Torrance, CA 90501 - U.S.A., Tel.: +1-310-961-5500, Fax: +1-310-961-5511 die Software anfordern.

Información general sobre la GPL/LGPL

Este producto de TRENDnet incluye un programa gratuito desarrollado por terceros. Estos códigos están sujetos a la Licencia pública general de GNU ("GPL") o la Licencia pública general limitada de GNU ("LGPL"). Estos códigos son distribuidos SIN GARANTÍA y están sujetos a las leyes de propiedad intelectual de sus desarrolladores. TRENDnet no ofrece servicio técnico para estos códigos. Los detalles sobre las licencias GPL y LGPL de GNU se incluyen en el CD-ROM del producto.

Consulte también el (<http://www.gnu.org/licenses/gpl.txt>) ó el (<http://www.gnu.org/licenses/lgpl.txt>) para ver las cláusulas específicas de cada licencia.

Los códigos fuentes están disponibles para ser descargados del sitio Web de TRENDnet

(http://trendnet.com/downloads/list_gpl.asp) durante por lo menos tres años a partir de la fecha de envío del producto.

También puede solicitar el código fuente llamando a TRENDnet.

20675 Manhattan Place, Torrance, CA 90501, USA. Tel: +1-310-961-5500 Fax: +1-310-961-5511

Общая информация о лицензиях GPL/LGPL

В состав данного продукта TRENDnet входит бесплатное программное обеспечение, написанное сторонними разработчиками. Это ПО распространяется на условиях лицензий GNU General Public License ("GPL") или GNU Lesser General Public License ("LGPL"). Программы распространяются БЕЗ ГАРАНТИИ и охраняются авторскими правами разработчиков. TRENDnet не оказывает техническую поддержку этого программного обеспечения. Подробное описание лицензий GNU GPL и LGPL можно найти на компакт-диске, прилагаемом к продукту.

В пунктах (<http://www.gnu.org/licenses/gpl.txt>) и (<http://www.gnu.org/licenses/lgpl.txt>) изложены конкретные условия каждой из лицензий.

Исходный код программ доступен для загрузки с веб-сайта TRENDnet (http://trendnet.com/downloads/list_gpl.asp) в течение, как минимум, трех лет со дня поставки продукта.

Кроме того, исходный код можно запросить по адресу TRENDnet.

20675 Manhattan Place, Torrance, CA 90501, USA. Tel: +1-310-961-5500 Fax: +1-310-961-5511

GPL/LGPL informações Gerais

Este produto TRENDnet inclui software gratuito desenvolvido por terceiros. Estes códigos estão sujeitos ao GPL (GNU General Public License) ou ao LGPL (GNU Lesser General Public License). Estes códigos são distribuídos SEM GARANTIA e estão sujeitos aos direitos autorais dos desenvolvedores. TRENDnet não presta suporte técnico a estes códigos. Os detalhes do GNU GPL e do LGPL estão no CD-ROM do produto.

Favor acessar <http://www.gnu.org/licenses/gpl.txt> ou <http://www.gnu.org/licenses/lgpl.txt> para os termos específicos de cada licença.

Os códigos fonte estão disponíveis para download no site da TRENDnet (http://trendnet.com/langen/downloads/list_gpl.asp) por pelo menos três anos da data de embarque do produto.

Você também pode solicitar os códigos fonte contactando TRENDnet, 20675 Manhattan Place, Torrance, CA 90501, USA. Tel: +1-310-961-5500, Fax: +1-310-961-5511.

GPL/LGPL üldinformatsioon

See TRENDneti toode sisaldab vaba tarkvara, mis on kirjutatud kolmanda osapoole poolt. Koodid on allutatud GNU (General Public License) Üldise Avaliku Litsentsi (GPL) või GNU (Lesser General Public License) ("LGPL") Vähem Üldine Avalik Litsentsiga. Koode vahendatakse ILMA GARANTIITA ja need on allutatud arendajate poolt. TRENDnet ei anna koodidele tehnilist tuge. Detailsemat infot GNU GPL ja LGPL kohta leiate toote CD-ROMil. Infot mõlema litsentsi spetsiifiliste terminite kohta leiate (<http://www.gnu.org/licenses/gpl.txt>) või (<http://www.gnu.org/licenses/lgpl.txt>).

Infot mõlema litsentsi spetsiifiliste terminite kohta leiate (<http://www.gnu.org/licenses/gpl.txt>) või (<http://www.gnu.org/licenses/lgpl.txt>). Lähtekoodi on võimalik alla laadida TRENDneti kodulehelt

(http://trendnet.com/langen/downloads/list_gpl.asp) kolme aasta jooksul alates toote kättesaamise kuupäevast.

Samuti võite lähtekoodi paluda TRENDneti'lt, 20675 Manhattan Place, Torrance, CA 90501, USA. Tel: +1-310-961-5500, Fax: +1-310-961-5511.

Certifications

This equipment has been tested and found to comply with FCC and CE Rules.

Operation is subject to the following two conditions:

- (1) This device may not cause harmful interference.
- (2) This device must accept any interference received. Including interference that may cause undesired operation.



Waste electrical and electronic products must not be disposed of with household waste. Please recycle where facilities exist. Check with you Local Authority or Retailer for recycling advice.



NOTE: THE MANUFACTURER IS NOT RESPONSIBLE FOR ANY RADIO OR TV INTERFERENCE CAUSED BY UNAUTHORIZED MODIFICATIONS TO THIS EQUIPMENT. SUCH MODIFICATIONS COULD VOID THE USER'S AUTHORITY TO OPERATE THE EQUIPMENT.

ADVERTENCIA

En todos nuestros equipos se mencionan claramente las características del adaptador de alimentación necesario para su funcionamiento. El uso de un adaptador distinto al mencionado puede producir daños físicos y/o daños al equipo conectado. El adaptador de alimentación debe operar con voltaje y frecuencia de la energía eléctrica domiciliar existente en el país o zona de instalación.



Product Warranty Registration

Please take a moment to register your product online.
Go to TRENDnet's website at <http://www.trendnet.com/register>