

# Ansul<sup>+</sup> 2 Router

Quick Installation Guide



## **ADSL2+ Router**

# ADSL2+ Router

## System Requirement

1. Pentium 200 MHz processor or above
2. Windows 98SE, Windows Me, Windows 2000, Windows XP and Windows Vista.
3. 64 MB of RAM or above
4. 25 MB free disk space

## Package Contents

### For Annex-A ADSL2+ Router

1. ADSL2+ Router
2. CD-ROM (Software & Manual)
3. Quick Installation Guide
4. 1 x Telephone Cable (RJ-11)
5. Ethernet Cable (RJ-45)
6. AC Adaptor
7. Annex A ATF085A1R Splitter (Optional, with an extra RJ-11 Telephone cable)

### For Annex-B ADSL2+ Router

1. ADSL2+ Router
2. CD-ROM (Software & Manual)
3. Quick Installation Guide
4. 1 x Telephone Cable (RJ-11)
5. Ethernet Cable (RJ-45)
6. AC Adaptor
7. Annex B ATF057R Splitter (Optional, with an extra RJ-11 Telephone cable)

### Installation & Setup

#### ●LAN Connection:

Connect an Ethernet cable from your PC's Ethernet port to ADSL2+ Router's LAN Port.

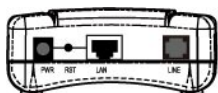
#### ●WAN Connection:

Connect the telephone cable from your home's telephone jack to the telephone port (LINE) of the ADSL2+ Router, if there is no Splitter applied.

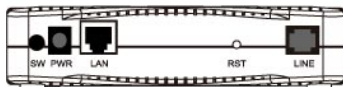
#### ●Power Adapter Connection:

Connect the power adapter to the power inlet (PWR) of the ADSL2+ Router and turn the power switch (SW) on.

Figure 1: Rear View of the ADSL2+ Router



( 1 Ethernet Port )



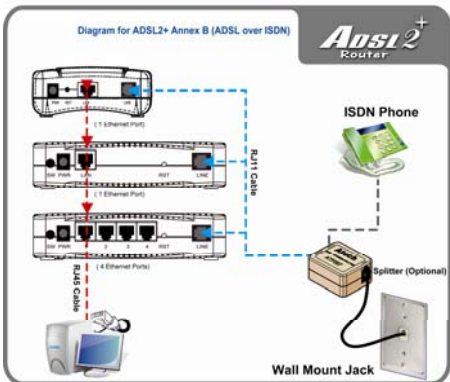
( 1 Ethernet Port )



( 4 Ethernet Ports )

## Connection of ADSL2+ Router

If you have an ISDN telephone line connected the router as shown below:  
(Annex-B ADSL2+ Router)

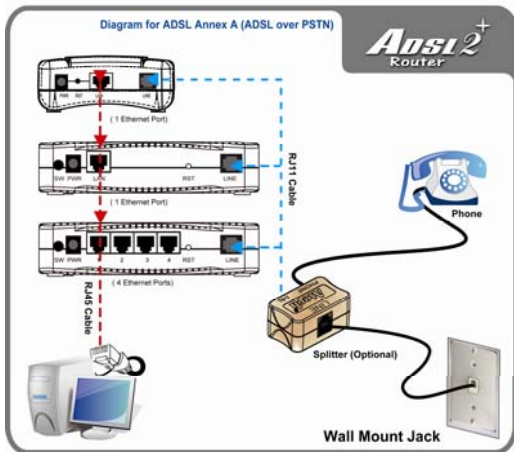


**\*\*Use the "ATF057" Annex-B Splitter (Optional)**

1. Connect the supplied RJ45 Ethernet cable from your PC's Ethernet port to the ADSL2+ Router's "LAN" Port.
2. Connect the supplied RJ11 telephone cable from your home's telephone jack to the "LINE" port of the supplied ATF057 splitter. Connect the other supplied RJ11 telephone cable to the "MODEM" port of the splitter and connect the other end of this cable to the "LINE" port of your ADSL2+ Router.
3. Connect a RJ11 telephone cable to the "PHONE" port of the splitter and connect the other end to the telephone input.
4. Connect the power adapter to the power inlet (PWR) of the ADSL2+ Router and turn the "SW" switch of your ADSL2+ Router on.

## ADSL2+ Router

If you have a **PSTN telephone line (normal analog line)** connected the router as shown below: (Annex-A ADSL2+ Router)



**\*\*Use the "ATF085A1R" Annex-A Splitter (Optional)**

1. Connect the supplied RJ45 Ethernet cable from your PC's Ethernet port to ADSL2+ Router's "LAN" Port.
2. Connect the supplied RJ11 telephone cable from your home's telephone jack to the "LINE" port of the supplied ATF085A1R splitter. Connect the other supplied RJ11 telephone cable to the "MODEM" port of the splitter and connect the other end of this cable to the "LINE" port of your ADSL2+ Router.
3. Connect a RJ11 telephone cable to the "PHONE" port of the splitter and connect the other end to your telephone.
4. Connect the power adapter to the power inlet (PWR) of the ADSL2+ Router and turn the power switch (SW) of your ADSL2+ Router on.

## LED Meaning

Your ADSL2+ Router has indicator lights on the front side. Please see below for an explanation of the function of each indicator light.

### 1 Ethernet Port model

- **Power** : Power indicator
- **ADSL ACT** : ADSL Active indicator
- **ADSL LINK** : ADSL Link indicator
- **10M ACT** : Ethernet 10M speed active indicator
- **100M ACT** : Ethernet 100M speed active indicator

Label	Color	On	Flash	Off
<b>PWR</b>	Yellow	Power On	NA	Power Off
<b>ADSL ACT</b>	Green	NA	ADSL Active	ADSL IDLE
<b>ADSL LINK</b>	Green	Connect to DSLAM	Disconnect to DSLAM	NA
<b>10M ACT</b>	Green	10M Connected	Transmit / Receive Data	10M Disconnected
<b>100M ACT</b>	Green	100M Connected	Transmit / Receive Data	100M Disconnected

Table 1.1-- 1 Ethernet Port LED function

#### 4 Ethernet Ports model:

- **Power** : Power indicator
- **ADSL ACT** : ADSL Active indicator
- **ADSL LINK** : ADSL Link indicator
- **LAN 1~4** : Ethernet 10/100M speed active indicator

Label	Color	On	Flash	Off
<b>PWR</b>	Yellow	Power On	NA	Power Off
<b>ADSL ACT</b>	Green	NA	ADSL Active	ADSL IDLE
<b>ADSL LINK</b>	Green	Connect to DSLAM	Disconnect to DSLAM	NA
<b>LAN 1~4</b>	Green	Ethernet Connected	Transmit / Receive Data	Ethernet Disconnected

Table 1.2-- 4 Ethernet Ports LED function



## Configuration Procedures

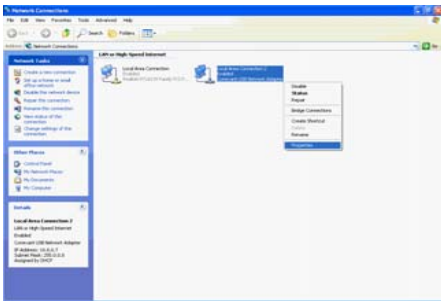
Before starting the ADSL2+ Router configuration, please kindly configure the PC computer as below, to have automatic IP address / DNS Server.

### For Windows 98SE/ME/2000/XP

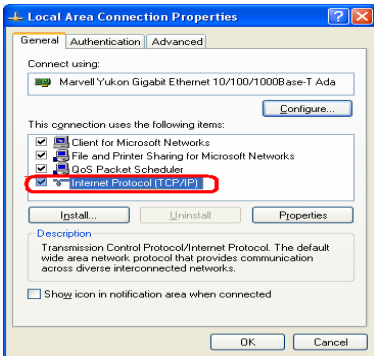
1. Click on "**Start**" -> "**Control Panel**" (in Classic View). In the Control Panel, double click on "**Network Connections**" to continue.



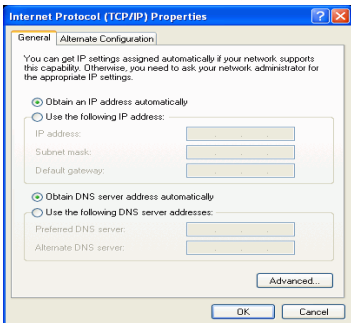
2. Single RIGHT click on "**Local Area connection**", then click "**Properties**".



3. Double click on **"Internet Protocol (TCP/IP)"**.



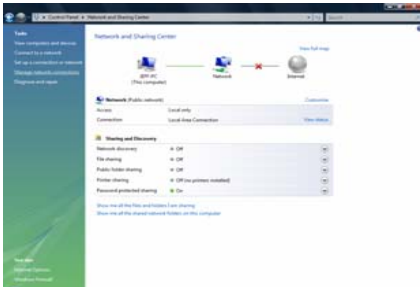
4. Check **"Obtain an IP address automatically"** and **"Obtain DNS server address automatically"** then click on **"OK"** to continue.



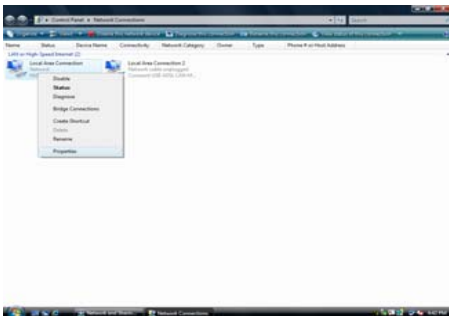
5. Click **"Show icon in notification area when connected"** (see screen image in 3. above) then Click on **"OK"** to complete the setup procedures.

## For Windows Vista-32/64

1. Click on **"Start"** -> **"Control Panel"** (in Classic View) -> **"Network and Sharing Center"**. In the Manage network connections, double click on **"Manage network connections"** to continue.

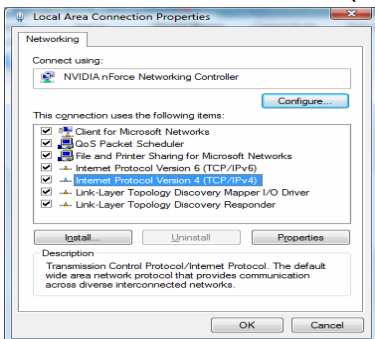


2. Single right click on **"Local Area connection"**, then click **"Properties"**.

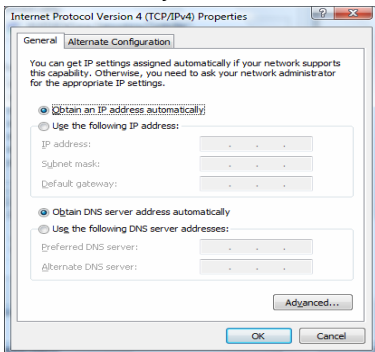


3. The screen will display the information **"User Account Control"** and click **"Continue"** to continue.

4. Double click on **"Internet Protocol Version 4(TCP/IPv4)"**



5. Check **"Obtain an IP address automatically"** and **"Obtain DNS server address automatically"** then click on **"OK"** to continue.



6. Click **"Show icon in notification area when connected"** (see screen image in 4. above), then Click on **"OK"** to complete the setup procedures.

## ADSL2+ Router Configuration via Ethernet Port

1. Please insert the supplied CD into your CD-ROM drive.
2. The CD should auto-start, displaying the window shown in 3. below. If your CD does not start automatically go to Windows Explorer, Select your CD drive and double click "**setup.exe**"
3. Please click "**Ethernet connection**" button to continue.



4. Enter the VPI, VCI, Username, and Password your ISP(Internet Services Provider) provided, and choose your required configuration. Then press "**Save Configuration**". Please wait for about 30 seconds.



You can now access the Internet!!





*AnsI 2<sup>+</sup>*  
*Router*

