

# **D-Link DGS-1224T**

**24-Port 10/100/1000Mbps + 2 Combo Mini  
GBIC Gigabit Smart Switch**

**Manual**

*First Edition*

**D-Link®**

Building Networks for People

# ***TABLE OF CONTENT***

---

About This Guide .....	1
Purpose.....	1
Terms/Usage.....	1
Introduction.....	2
Gigabit Ethernet Technology.....	2
Fast Ethernet Technology.....	3
Switching Technology.....	4
VLAN (Virtual Local Area Network) .....	5
Features.....	5
Unpacking and Installation .....	7
Unpacking .....	7
Installation.....	7
Rack Mounting.....	8
Connecting Network Cable .....	9
AC Power .....	10
Identifying External Components .....	11
Front Panel .....	11
Rear Panel .....	12
Understanding LED Indicators .....	13
Power and System LEDs .....	13
Ports 1~24 Status LEDs .....	14
Option Ports Mini GBIC 1 & Mini GBIC 2 Mini GBIC Status LEDs .....	14
Configuration.....	15

Installing the Web Management Utility .....	15
Discovery List .....	16
Monitor List .....	17
Device Setting .....	19
Toolbar.....	21
Configuring the Switch .....	22
Login .....	22
Setup Menu.....	24
Configuring Setup Setting .....	24
Port Settings .....	25
VLAN Settings (Virtual Local Area Network) .....	27
Trunk Setting .....	28
Mirror Setting .....	28
Device Status.....	29
Statistic.....	29
System Setting .....	30
Trap Setting.....	31
Set Password .....	32
Backup Setting.....	32
Reset Setting .....	33
Logout.....	33
Technical Specifications .....	34

## ***ABOUT THIS GUIDE***

---

Congratulations on your purchase of the 24-Port 10/100/1000Mbps + 2 Combo Mini GBIC Gigabit Smart Switch. This device integrates 1000Mbps Gigabit Ethernet, 100Mbps Fast Ethernet and 10Mbps Ethernet network capabilities in a highly flexible package.

---

### **Purpose**

---

This guide discusses how to install and configure the DGS-1224T Web Smart Switch.

---

### **Terms/Usage**

---

In this guide, the term “Switch” (first letter upper case) refers to your DGS-1224T Web Smart Switch, and “switch” (first letter lower case) refers to other Ethernet switches.

## ***INTRODUCTION***

---

This chapter describes the features of the DGS-1224T and some background information about Ethernet/Fast Ethernet/Gigabit Ethernet switching technology.

---

### **Gigabit Ethernet Technology**

---

Gigabit Ethernet is an extension of IEEE 802.3 Ethernet utilizing the same packet structure, format, and support for CSMA/CD protocol, full duplex, flow control, and management objects, but with a tenfold increase in theoretical throughput over 100-Mbps Fast Ethernet and a hundredfold increase over 10-Mbps Ethernet. Since it is compatible with all 10-Mbps and 100-Mbps Ethernet environments, Gigabit Ethernet provides a straightforward upgrade without wasting a company's existing investment in hardware, software, and trained personnel.

The increased speed and extra bandwidth offered by Gigabit Ethernet is essential to coping with the network bottlenecks that frequently develop as computers and their busses get faster and more users use applications that generate more traffic. Upgrading key components, such as your backbone and servers to Gigabit Ethernet can greatly improve network response times as well as significantly speed up the traffic between your subnets.

Gigabit Ethernet enables fast optical fiber connections to support video conferencing, complex imaging, and similar data-intensive applications. Likewise, since data transfers occur 10 times faster than Fast Ethernet, servers outfitted with Gigabit Ethernet NIC's are able to perform 10 times the number of operations in the same amount of time.

In addition, the phenomenal bandwidth delivered by Gigabit Ethernet is the most cost-effective method to take advantage of today and

tomorrow's rapidly improving switching and routing internetworking technologies. And with expected advances in the coming years in silicon technology and digital signal processing that will enable Gigabit Ethernet to eventually operate over unshielded twisted-pair (UTP) cabling, outfitting your network with a powerful 1000-Mbps-capable backbone/server connection creates a flexible foundation for the next generation of network technology products.

---

## Fast Ethernet Technology

---

The growing importance of LANs and the increasing complexity of desktop computing applications are fueling the need for high performance networks. A number of high-speed LAN technologies have been proposed to provide greater bandwidth and improve client/server response times. Among them, 100BASE-T (Fast Ethernet) provides a non-disruptive, smooth evolution from the current 10BASE-T technology. The non-disruptive and smooth evolution nature, and the dominating potential market base, virtually guarantees cost-effective and high performance Fast Ethernet solutions.

100Mbps Fast Ethernet is a standard specified by the IEEE 802.3 LAN committee. It is an extension of the 10Mbps Ethernet standard with the ability to transmit and receive data at 100Mbps, while maintaining the CSMA/CD Ethernet protocol. Since the 100Mbps Fast Ethernet is compatible with all other 10Mbps Ethernet environments, it provides a straightforward upgrade and takes advantage of the existing investment in hardware, software, and personnel training.

---

## Switching Technology

---

Another approach to pushing beyond the limits of Ethernet technology is the development of switching technology. A switch bridges Ethernet packets at the MAC address level of the Ethernet protocol transmitting among connected Ethernet or Fast Ethernet LAN segments.

Switching is a cost-effective way of increasing the total network capacity available to users on a local area network. A switch increases capacity and decreases network loading by dividing a local area network into different segments, which don't compete with each other for network transmission capacity.

The switch acts as a high-speed selective bridge between the individual segments. The switch, without interfering with any other segments, automatically forwards traffic that needs to go from one segment to another. By doing this the total network capacity is multiplied, while still maintaining the same network cabling and adapter cards.

Switching LAN technology is a marked improvement over the previous generation of network bridges, which were characterized by higher latencies. Routers have also been used to segment local area networks, but the cost of a router, the setup and maintenance required make routers relatively impractical. Today switches are an ideal solution to most kinds of local area network congestion problems.

---

## VLAN (Virtual Local Area Network)

---

A VLAN is a group of end-stations that are not constrained by their physical location and can communicate as if a common broadcast domain, a LAN. The primary utility of using VLAN is to reduce latency and need for routers, using faster switching instead. Other VLAN utility includes:

**Security,** Security is increased with the reduction of opportunity in eavesdropping on a broadcast network because data will be switched to only those confidential users within the VLAN.

**Cost Reduction,** VLANs can be used to create multiple broadcast domains, thus eliminating the need of expensive routers.

Port-based (or port-group) VLAN is the common method of implementing a VLAN, and is the one supplied in the Switch.

---

### Features

---

- ◆ 24×10/100/1000Mbps Auto-negotiation Gigabit Ethernet ports
- ◆ All RJ45 ports support auto MDI/MDIX, so there is no need to use cross-over cables or an up-link port
- ◆ Half duplex transfer mode for connection speed 10Mbps and 100Mbps
- ◆ Full duplex transfer mode for connection speed of 10Mbps, 100Mbps and 1000Mbps
- ◆ Gigabit Wire speed reception and transmission
- ◆ Store-and-Forward switching scheme capability to support rate adaptation and ensure data integrity



- ◆ 8K unicast addresses entities per device, self-learning, and table aging
- ◆ 400KBytes packet buffer
- ◆ Supports IEEE 802.3x flow control for full-duplex mode ports
- ◆ Supports Port-based VLAN
- ◆ Supports Port-based QoS
- ◆ Supports Port-based Trunking
- ◆ Supports Port-based Mirroring
- ◆ Supports Port-setting for Speed/Disable, Flow control
- ◆ Easy configuration via WEB Browser
- ◆ Easy setting via Web Management Utility
- ◆ Broadcast Storm Protection
- ◆ Standard 19” Rack-mount size

## ***UNPACKING AND INSTALLATION***

---

This chapter provides unpacking and installation information for the Switch.

---

### **Unpacking**

---

Open the shipping cartons of the Switch and carefully unpacks its contents. The carton should contain the following items:

- ◆ One DGS-1224T Web Smart Switch
- ◆ One AC power cord, suitable for your area's electrical power connections
- ◆ Four rubber feet to be used for shock cushioning
- ◆ Screws and two mounting brackets
- ◆ CD-Rom with Web Management Utility and Manual
- ◆ Quick Installation Guide

If any item is found missing or damaged, please contact your local reseller for replacement.

---

### **Installation**

---

The site where you install the hub stack may greatly affect its performance. When installing, consider the following pointers:

Install the Switch in a fairly cool and dry place. See ***Technical Specifications*** for the acceptable temperature and humidity operating ranges.

Install the Switch in a site free from strong electromagnetic field generators (such as motors), vibration, dust, and direct exposure to

---

sunlight.

Leave at least 10cm of space at the front and rear of the hub for ventilation.

Install the Switch on a sturdy, level surface that can support its weight, or in an EIA standard-size equipment rack. For information on rack installation, see the next section, Rack Mounting.

When installing the Switch on a level surface, attach the rubber feet to the bottom of each device. The rubber feet cushion the hub and protect the hub case from scratching.

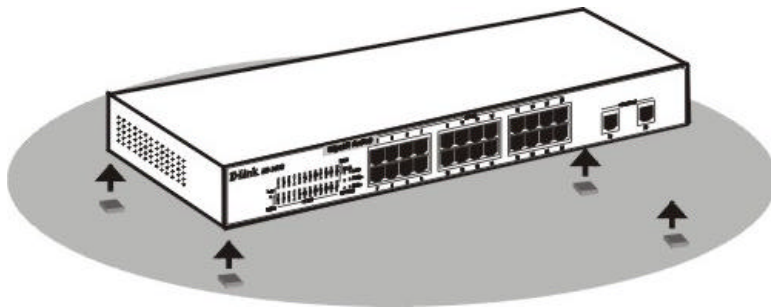


Figure 1. Attach the adhesive rubber pads to the bottom

---

## Rack Mounting

---

The switch can be mounted in an EIA standard-size, 19-inch rack, which can be placed in a wiring closet with other equipment. Attach the mounting brackets at the switch's front panel (one on each side), and secure them with the provided screws.

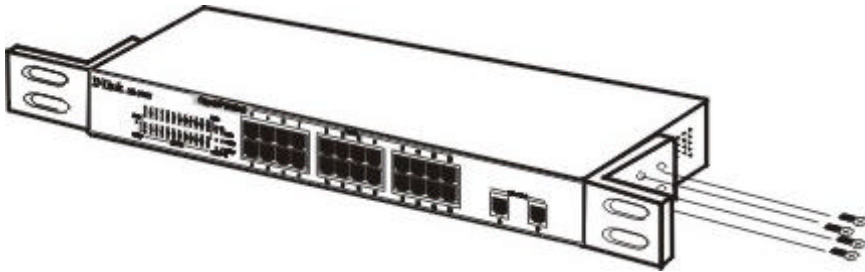


Figure 2. Combine the Switch with the provided screws

Then, use screws provided with the equipment rack to mount each switch in the rack.

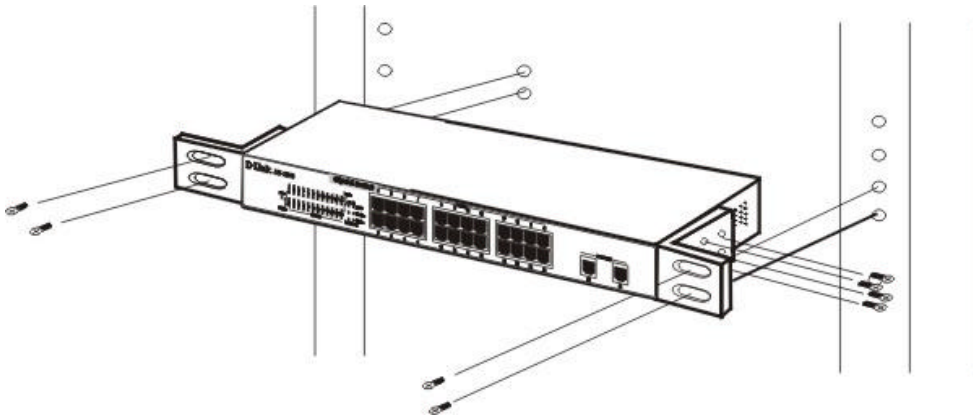


Figure 3. Mount the Switch in the rack

---

## Connecting Network Cable

---

The Switch supports 1000Mbps Gigabit Ethernet that runs in Auto-negotiation mode and 10Mbps Ethernet or 100Mbps Fast Ethernet that runs both in half and full duplex mode and 1000Mbps Gigabit Ethernet runs in full duplex mode using four pair of Category 5 Cable.

These RJ-45 ports are Auto-MDI type port. The Switch can auto transform to MDI-II or MDI-X type, so you can just make an easy connection that without worrying if you are using a standard or crossover RJ45 cable.

---

## AC Power

---

The Switch used the AC power supply 100-240V AC, 50-60 Hz. The power switch is located at the rear of the unit adjacent to the AC power connector and the system fan. The switch's power supply will adjust to the local power source automatically and may be turned on without having any or all LAN segment cables connected.

## ***IDENTIFYING EXTERNAL COMPONENTS***

---

This chapter describes the front panel, rear panel, and LED indicators of the Switch.

---

### **Front Panel**

---

The figure below shows the front panels of the Switch.

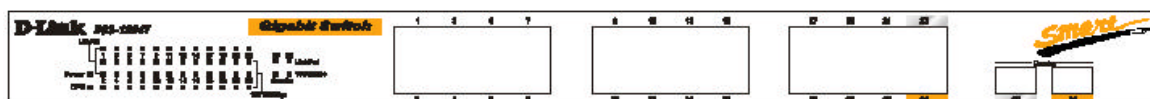


Figure 4. Front panel of 24-port Gigabit Smart Switch

### **LED Indicator:**

Comprehensive LED indicators display the status of the switch and the network (see the LED Indicators chapter below).

### **Gigabit Ethernet Ports (Port 1~24):**

The Switch sixteen Gigabit twisted pair ports, supported auto negotiable 10/100/1000Mbps and auto MDI/MDIX crossover detection function, this function gives true “plug and play” capability, just need to plug-in the network cable to the hub directly and don’t care if the end node is NIC (Network Interface Card) or switch and hub. These ports can operate in half-duplex mode for 10/100Mbps and full- duplex mode for 10/100/1000Mbps.

### **Mini GBIC Ports**

The Switch is equipped with two Mini GBIC ports, supported optional 1000BASE-SX/LX Mini GBIC module.

*Note: When the port was set to “Forced Mode”, the Auto MDI/MDIX will be disabled.*

---

## Rear Panel

---

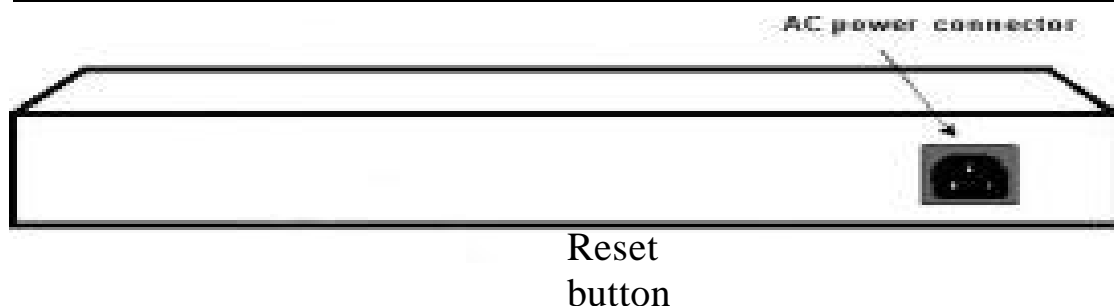


Figure 5. Rear panel of the Switch

### **AC Power Connector:**

This is a three-pronged connector that supports the power cord. Plug in the female connector of the provided power cord into this connector, and the male into a power outlet. Supported input voltages range from 100-240V AC at 50-60Hz.

### **Reset:**

The Reset button is to reset all the setting back to the factory default.

*Note: Be sure that you recorded the setting of your device, else all the setting will be erased when pressing the “Reset” button.*

## UNDERSTANDING LED INDICATORS

The front panel LEDs provides instant status feedback, and, helps monitor and troubleshoot when needed.

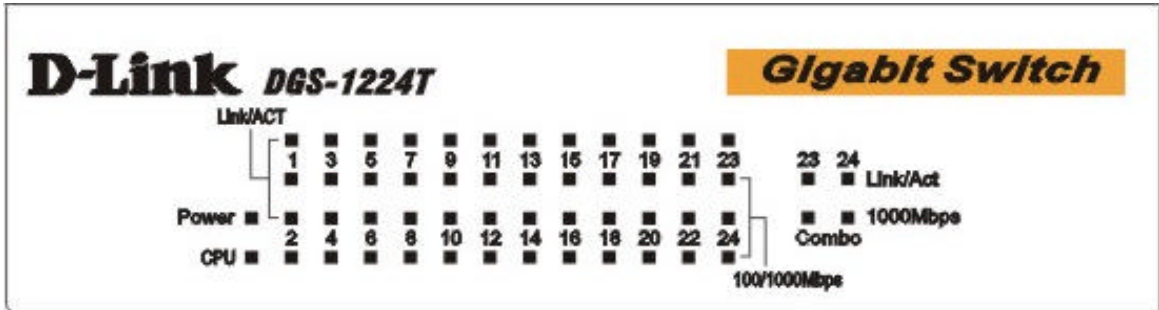


Figure 6. LED indicators of the Switch

### Power and System LEDs

Power: Power Indicator

On	When the Power LED lights on, the Switch is receiving power.
Off	When the Power turns off or the power cord has improper connection.

CPU: Management Indicator

Blinking	When the CPU is working, the System LED is blinking.
On/Off	The CPU is not working.



---

## Ports 1~24 Status LEDs

---

### Link/Act:

On	When the Link/Act LED lights on, the respective port is successfully connected to an Ethernet network.
Blinking	When the Link/Act LED is blinking, the port is transmitting or receiving data on the Ethernet network.
Off	No link.

### 100/1000Mbps

Green	When the 1000Mbps LED lights Green, the respective port is connected to a 1000Mbps Gigabit Ethernet network.
Amber	When the 100Mbps LED lights Amber, the respective port is connected to a 100Mbps Fast Ethernet network.
Off	When the respective port is connected to a 10Mbps Ethernet

---

## Option Ports Mini GBIC 1 & Mini GBIC 2 Mini GBIC Status LEDs

---

### Link/Act:

On	When the Mini GBIC module is installed and connected to a network, the Link/Act LED lights on.
Blinking	When the LED is blinking, the Mini GBIC module is receiving data on a network.
Off	No link.

### 1000Mbps

On	When the 1000Mbps LED lights on, the respective port is connected to a 1000Mbps Gigabit Ethernet network.
Off	When the respective port is disconnected to the network

## ***CONFIGURATION***

---

Through the Web Browser you can configure the Switch such as VLAN, Trunking, QoS... etc.

With the attached Web Management Utility, you can easily discover all the Web Management Switch, assign the IP Address, changing the password and upgrading the new firmware.

---

### **Installing the Web Management Utility**

---

The following gives instructions guiding you through the installations of the Web Management utility.

1. Insert the Utility CD in the CD-Rom Drive.
2. From the **Start** menu on the Windows desktop, choose **Run**.
3. In the **Run** dialog box, type D:\Web Management Utility\setup.exe (D:\ depends where your CD-Rom drive is located) and click **OK**.
4. Follow the on-screen instructions to install the utility.
5. Upon completion, go to **Program Files -> web\_management\_utility** and execute the Web Management utility. (Figure 7.)

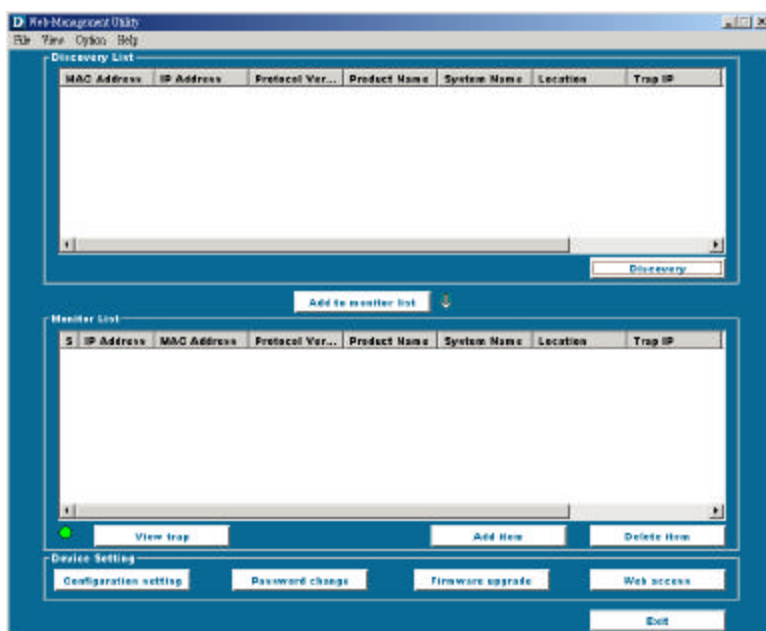


Figure 7. Web Management Utility

The Web Management Utility was divided into four parts, ***Discovery List***, ***Monitor List***, ***Device Setting*** and ***Toolbar function***, for details instruction, follow the below section.

---

## Discovery List

---

This is the list where you can discover all the Web management devices in the entire network.

By pressing the “***Discovery***” button, you can list all the Web Management devices in the discovery list.

Double click or press the “***Add to monitor list***” button to select a device from the Discovery List to the Monitor List.

## System word definitions in the Discovery List:

- **MAC Address:** Shows the device MAC Address.
- **IP Address:** Shows the current IP address of the device.
- **Protocol version:** Shows the version of the Utility protocol.
- **Product Name:** Shows the device product name.
- **System Name:** Shows the appointed device system name.
- **Location:** Shows where the device is located.
- **Trap IP:** Shows the IP where the Trap to be sent.
- **Subnet Mask:** Shows the Subnet Mask set of the device.
- **Gateway:** Shows the Gateway set of the device.


---

## Monitor List

---

All the Web Smart Device in the Monitor List can be monitored; you can also receive the trap and show the status of the device.

## System word definitions in the Monitor List:

- **S:** Shows the system symbol of the Web-Smart device,  represent for device system is not alive.
- **IP Address:** Shows the current IP address of the device.
- **MAC Address:** Shows the device MAC Address.
- **Protocol version:** Shows the version of the Utility protocol.
- **Product Name:** Shows the device product name.
- **System Name:** Shows the appointed device system name.
- **Location:** Shows where the device is located.
- **Trap IP:** Shows the IP where the Trap to be sent.
- **Subnet Mask:** Shows the Subnet Mask set of the device.
- **Gateway:** Shows the Gateway set of the device.

**View Trap:** The Trap function can receive the events that happen from the Web Management Switch in the Monitor List.

There is a light indicator behind the “**View Trap**” button, when the light indicates in green, it means that there is no trap transmitted, and else when it indicates in red, it means that there is new trap transmitted, this is to remind us to view the trap. (Figure 8)

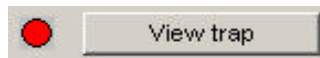



Figure 8.

When the “**View Trap**” button is clicked, a Trap Information window will pop out, it will show the trap information including the Symbol, Time, Device IP and the Event occurred. (Figure 9)

The symbol “” represents the trap signal arise, this symbol will disappear after you review and click on the event record.

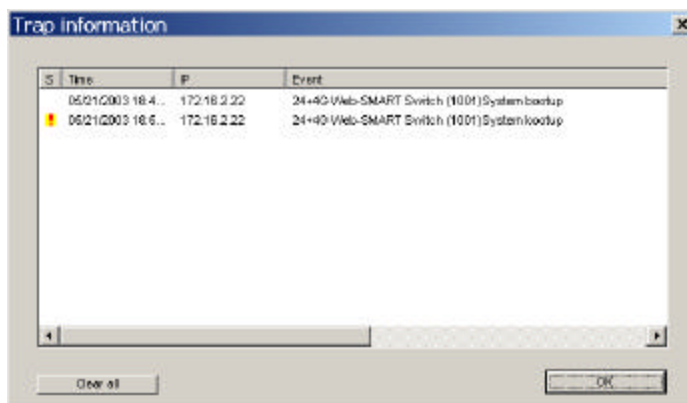


Figure 9.

**Note:** In order to receive Trap information, switch has to be configured with Trap IP and Trap Events in Web browser, which are available in the Trap Setting Menu (see Page 45 for detail).

**Add Item:** To add a device to the Monitor List manually , enter the IP Address of the device that you want to monitor.

**Delete Item:** To delete the device in the Monitor List.

---

## Device Setting

---

You can set the device by using the function key in the Device Setting Dialog box.

**Configuration Setting:** In this Configuration Setting, you can set the IP Address, Subnet Mask, Gateway, Set Trap to (Trap IP Address), System name and Location.

Select the device in the Discovery list or Monitor List and press this button, then the Configuration Setting window will pop out as Figure 10, after filling up the data that you want to change, you must fill up the password and press the “Set” to process the data changed immediately.

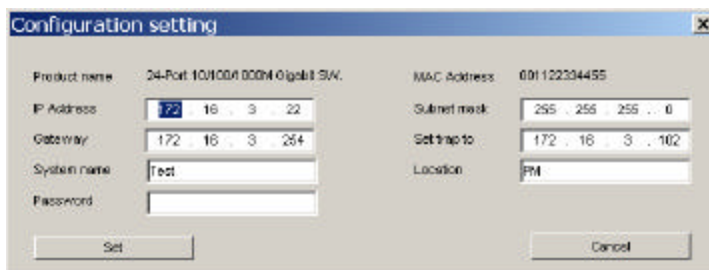


Figure 10. Configuration Setting

**Password Change:** You can use this Password Change when you need to change the password, fill in the password needed in the dialog box and press “*Set*” button to proceed the password change immediately.

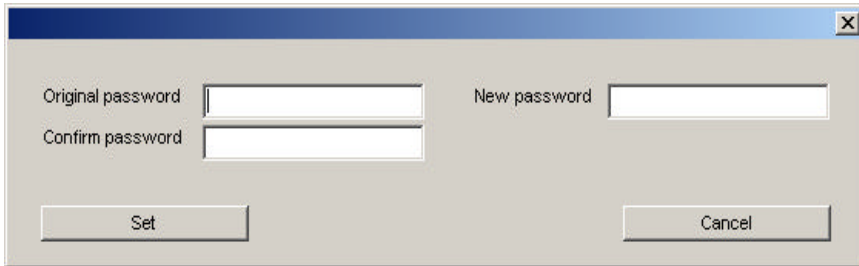


Figure 11. Password Change

**Firmware Upgrade:** When the device has a new function, there will be a new firmware to update the device, use this function to update.

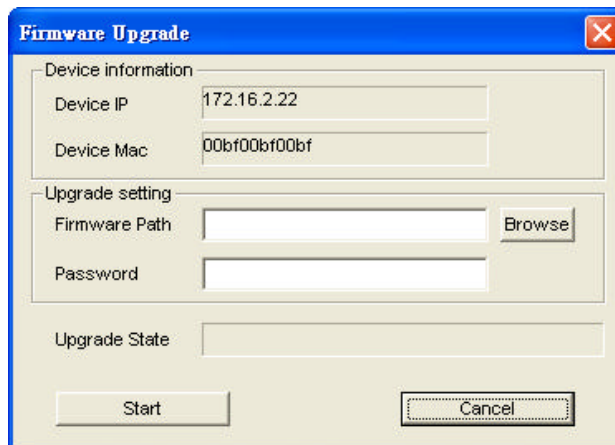


Figure 12.

**Web Access:** Double click the device in the Monitor List or select a device in the Monitor List and press this “*Web Access*” button to access the device in Web browser.

---

## Toolbar

---

The toolbar in the Web Management Utility have four main tabs, File, View, Options and Help.

In the “**File TAB**”, there are Monitor Save, Monitor Save As, Monitor Load and Exit.

**Monitor Save:** To record the setting of the Monitor List to the default, when you open the Web Management Utility next time, it will auto load the default recorded setting.

**Monitor Save As:** To record the setting of the Monitor List in appointed filename and file path.

**Monitor Load:** To manually load the setting file of the Monitor List.

**Exit:** To exit the Web Management Utility.

In the “**View TAB**”, there are view log and clear log function, this function will help you to show trap setting.

**View Log:** To show the event of the Web Management Utility and the device.

**Clear Log:** to clear the log.

In the “**Option TAB**”, there are Refresh Time function, this function helps you to refresh the time of monitoring the device. Choose **15 secs, 30 secs, 1 min, 2 min and 5 min** to select the time of monitoring.

In the “**Help TAB**”, there is About function, it will show out the version of the Web Management Utility.



---

## Configuring the Switch

---

The DGS-1224T Web Smart Switch has a Web GUI interface for smart switch configuration. The Switch can be configured through the Web Browser. A network administrator can manage, control and monitor the switch from the local LAN. This section indicates how to configure the Switch to enable its smart functions including:

- ◆ Port Setting (Speed/Disable, Duplex mode, Flow Control and Port base QoS)
- ◆ Virtual LAN Group setting (VLAN)
- ◆ Port-based Trunking
- ◆ Port-based Mirroring
- ◆ System Setting
- ◆ Device status and Statistic

---

## Login

---

Before you configure this device, note that when the Web Smart Switch is configured through an Ethernet connection, make sure the manager PC must be set on same the **IP network**. For example, when the default network address of the default IP address of the Web Smart Switch is **192.168.0.1**, then the manager PC should be set at 192.168.0.x (where x is a number between 2 and 254), and the default subnet mask is 255.255.255.0.

Open Internet Explorer 5.0 or above Web browser.

Enter IP address <http://192.168.0.1> (the factory-default IP address setting) to the address location.



Figure 13.

Or through the Web Management Utility, you do not need to remember the IP Address, select the device shown in the Monitor List of the Web Management Utility to settle the device on the Web Browser.

When the following dialog page appears, remain enter the default password **"admin"** and press Login to enter the main configuration window.

**Login**

System Name :	
Location Name :	
IP Address :	192.168.0.1
MAC Address :	00-11-22-33-44-55

password

Figure 14.

After entering the password, the main page comes up, the screen will display the device status.

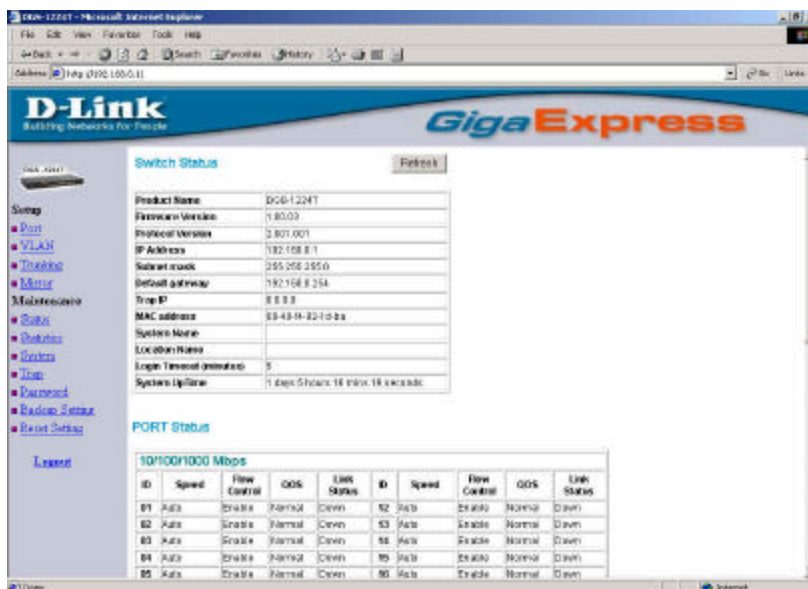


Figure 15. Device Status

---

## Setup Menu

---

When the main page appears, find the *Setup menu* in the left side of the screen (Figure 16). Click on the setup item that you want to configure. There are eleven options: *Port Settings*, *VLAN Settings*, *Trunk Setting*, *Mirror Setting*, *Device Status*, *Statistic*, *System Settings*, *Trap Setting*, *Password Setting*, *Backup Setting* and *Reset Setting* as shown in the Main Menu screen.



Figure 16. Setup menu

---

## Configuring Setup Setting

---

Find that there are four items, including *Port Settings*, *VLAN Settings*, *Trunk Settings* and *Mirror Settings* in Setup menu.

---

## Port Settings

---

In Port Settings menu (Figure 17), this page will show each port's status, press the ID parameter to set each port's *Speed*, *Flow Control*, *QoS priority* and *Link Status*. When you need to renew the posted information, press the “Refresh” button.

The *Link Status* in the screen will show the connection speed and duplex mode; else this dialog box will show *down* when the port is disconnected.

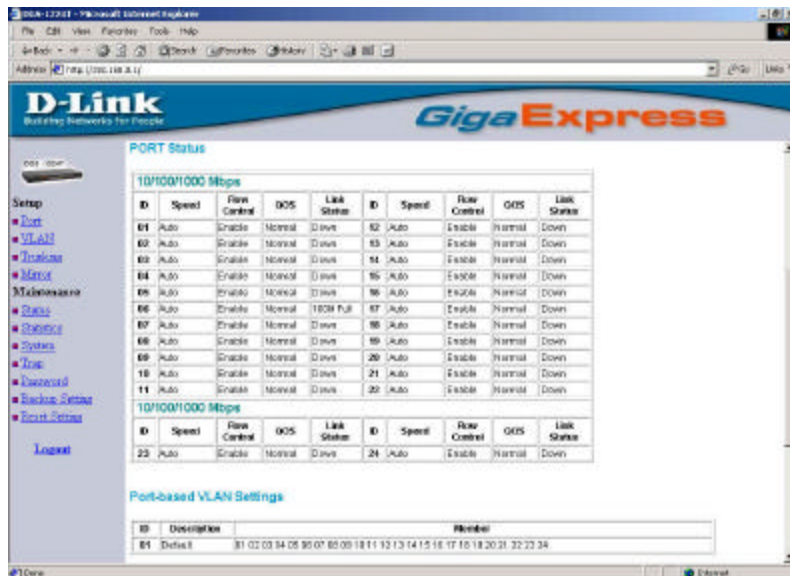


Figure 17. Port Setting

### Note:

1. ***Be sure that you have to re-setting the Gigabit port when transferring the media type ( Fiber to Copper or Copper to Fiber ).***

***The priority of Gigabit Fiber port is higher than Copper.***

To change the port setting, click on the ID parameter to enter to the selected port to configure its Speed/Disable, Flow control and QoS setting.

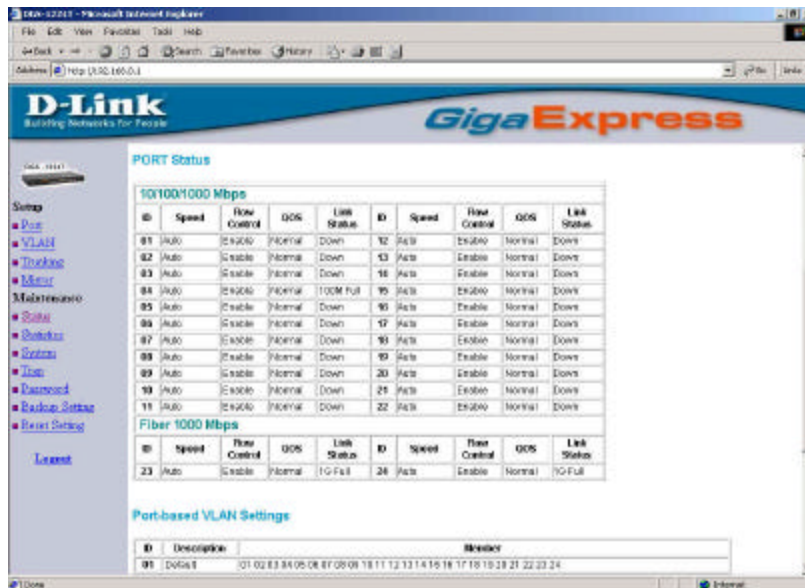


Figure 18

### Speed/Disable:

This setting has six modes—*100M Full*, *100M Half*, *10M Full*, *10M Half*, *Auto* and *Disable*—for speed or port disable selections.

### Flow Control:

This setting determines whether or not the Switch will be handling flow control. Set *FlowCtrl* to *Enable* for avoiding data transfer overflow. Or it sets to *Disable*; there is either no flow control or other hardware/software management.

When the port is set to *forced mode*, then the flow control will automatically set to *Disable*.



---

## Trunk Setting

---

The Trunk function enables to cascade two devices with a double times bandwidth (maximum up to 24Gbps in full duplex mode).

There are three selections in each group of trunk setting as follow:

*Group 1: Selection 1(disable), Selection 2(port 1, 2), Selection 3(port 1, 2, 3, 4).*

*Group 2: Selection 1(disable), Selection 2(port9, 10), Selection 3(port 9, 10, 11, 12)*

*Group32: Selection 1(disable), Selection 2(port17, 18), Selection 3(port17, 18, 19, 20)*

.

ID	Member
01	01,02
02	09,10,11,12
03	Disable

Apply

Figure 21. Trunk Settings

Be sure that the selected trunk setting port must connect to the device with a same VLAN group.

---

## Mirror Setting

---

Port Mirroring is a method of monitoring network traffic that forwards a copy of each incoming and/or outgoing packet from one port of a network switch to another port where the packet can be studied. It enables the manager to keep close track of switch performance and alter it if necessary.

Configuring the port Mirroring by assigning a source port from which to copy all packets and a sniffer port where those packets will be sent.

The selection of the sniffer mode is as follow:

**RX (receive) mode:** this mode will duplicate the data that send to the source and forward to the sniffer port.

---

### Mirror Setting

ID	01											
Sniffer Mode	Rx											
Sniffer Port	04											
Source Port	01	02	03	04	05	06	07	08	09	10	11	12
	<input type="checkbox"/>	<input type="checkbox"/>	<input type="checkbox"/>	<input type="checkbox"/>	<input type="checkbox"/>	<input type="checkbox"/>	<input type="checkbox"/>	<input type="checkbox"/>	<input checked="" type="checkbox"/>	<input type="checkbox"/>	<input type="checkbox"/>	<input type="checkbox"/>
	13	14	15	16	17	18	19	20	21	22	23	24
	<input type="checkbox"/>	<input type="checkbox"/>	<input type="checkbox"/>	<input type="checkbox"/>	<input checked="" type="checkbox"/>	<input type="checkbox"/>	<input checked="" type="checkbox"/>	<input type="checkbox"/>	<input type="checkbox"/>	<input type="checkbox"/>	<input type="checkbox"/>	<input type="checkbox"/>

Figure 22.

---

## Device Status

Click on the “*Status*” to present the device status on this screen, it will show the System Status, Port Status, VLAN Status, Trunk Status and Mirror Status..

Press “*Refresh*” when you need to renew the posted information.

---

## Statistic

The Statistic Menu screen will show the status of each port packet count.

ID	Tx Ok	Rx Ok	Tx Error	Rx Error	ID	Tx Ok	Rx Ok	Tx Error	Rx Error
<b>10/100/1000 Mbps (Packets)</b>									
01	0	0	0	0	12	0	0	0	0
02	0	0	0	0	13	0	0	0	0
03	0	0	0	0	14	0	0	0	0
04	0	0	0	0	15	0	0	0	0
05	0	0	0	0	16	0	0	0	0
06	0	0	0	0	17	0	0	0	0
07	0	0	0	0	18	0	0	0	0
08	0	0	0	0	19	0	0	0	0
09	0	0	0	0	20	0	0	0	0
10	0	0	0	0	21	0	0	0	0
11	0	0	0	0	22	0	0	0	0
<b>Fiber 1000 Mbps (Packets)</b>									
23	0	0	0	0					
<b>10/100/1000 Mbps (Packets)</b>									
24	306	15184	0	25					

Figure 23. Statistic



For Detail packet information, click on the ID parameter as Figure 24.

Detail Statistic Refresh

Port	24		
	<b>Receive Total</b>	<b>Transmit Total</b>	
Packets	15892	Packets	314
Bytes	2154023	Bytes	106337
High Priority Packets	15866	High Priority Packets	0
Low Priority Packets	0	Low Priority Packets	314
Broadcast	12613	Broadcast	0
Multicast	1210	Multicast	0
	<b>Receive Size Counters</b>	<b>Transmit Size Counters</b>	
64 Bytes	6189	64 Bytes	98
65 - 127 Bytes	6168	65 - 127 Bytes	52
128 - 255 Bytes	2312	128 - 255 Bytes	63
256 - 511 Bytes	268	256 - 511 Bytes	45
512 - 1023 Bytes	793	512 - 1023 Bytes	25
1024 - Bytes	50	1024 - Bytes	34
	<b>Receive Error Counters</b>	<b>Transmit Error Counters</b>	
CRC Alignment	0	Collisions	0
Undersize	0	FFD Drops	0
Oversize	0		
Fragments	26		
Jabber	0		
Drops	0		

Figure 24.

---

## System Setting

---

The System Setting includes the System name, Location name, Login Timeout, IP Address, Subnet Mask and Gateway. Through the Web Management Utility, you can easily recognize the device by using the System Name and the Location Name.

The Login Timeout is to set the idle time-out for security issue, when there is no action in running the Web Smart Utility and the time is up, you must re-login to Web Smart Utility before you set the Utility.

Fill up the IP Address, Subnet Mask and Gateway for the device.

**System Setting**

System Name:

Location Name:

Login Timeout (2 - 30 minutes):

**IP Address**

IP address:

Subnetmask:

Gateway:

Figure 25.

---

## Trap Setting

---

The Trap Setting enables the device to monitor the Trap through the Web Management Utility, set the Trap IP Address of the manager where the trap to be sent.

**Trap Setting**

Trap IP:

System Events:  device bootup  
 illegal login

Port Events:  abnormal receive error  
 abnormal transmit error

Figure 26. Trap Setting

- ◆ **System Events:** Monitoring the system's trap.

**Device Bootup:** a trap when booting up the system.

**Illegal Login:** a trap when there is using a wrong password login, and it will record from where the IP to be login.

- ◆ **Twisted Pair Port Events:** Monitoring the copper port status.

**Abnormal\* Receive Error:** a trap when there are receive data error in copper port.

**Abnormal\* Transmit Error:** a trap when there are transmit data error in copper port.

**Abnormal\*:** 50 error packet count within 10 seconds.

---

## Set Password

---

Password is the invaluable tool for the manager to secure Web Management Switch, use this function to change the password.

If you forget the password, press the “Reset” button in the rear panel of the Switch, the current setting includes VLAN, Port Setting... etc. will be lost and the Switch will restore to the default setting.

**Password Setting**

The maximum length is 20 and is case-sensitive.

Old Password	<input type="text"/>
New Password	<input type="text"/>
Re-type New Password	<input type="text"/>

Figure 27. Set Password

---

## Backup Setting

---

The backup tools help you to backup the current setting of the Switch. Once you need to backup the setting, press the “**Backup**” button to save the setting.

To restore a current setting file to the device, you must specify the backup file and press “**Restore**” button to proceed the setting of the recorded file.

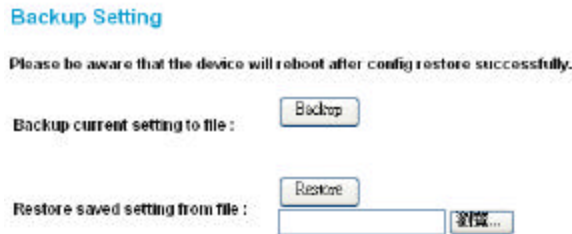


Figure 28. Backup Setting

*Note: when restoring a recorded file, the current password will not be erased.*

---

## Reset Setting

---

The Factory Reset button helps you to reset the device back to the default setting from the factory. Be aware that the entire configuration will be reset, the IP address of the device will be set to default setting 192.168.0.1.



Figure 29. Reset Setting

---

## Logout

---

When press this function, the web configuration will go back to first Login page.

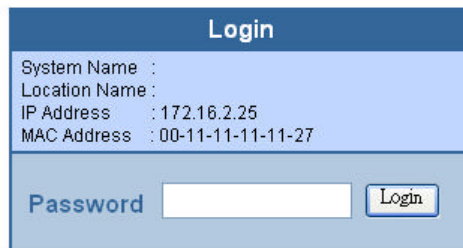


Figure 30. Logout

## **TECHNICAL SPECIFICATIONS**

---

<b>General</b>	
Standards	IEEE 802.3 10BASE-T Ethernet IEEE 802.3u 100BASE-TX Fast Ethernet IEEE 802.3ab 1000BASE-T Gigabit Ethernet IEEE 802.3x Full Duplex Flow Control IEEE 802.3z 1000BASE-SX/LX Gigabit Ethernet
Protocol	CSMA/CD
Data Transfer Rate	Ethernet: 10Mbps (half duplex), 20Mbps (full-duplex) Fast Ethernet: 100Mbps (half duplex), 200Mbps (full-duplex) Gigabit Ethernet: 2000Mbps (full-duplex)
Topology	Star
Network Cables	10BASE-T: 2-pair UTP Cat. 3, 4, 5; up to 100m 100BASE-TX: 2-pair UTP Cat. 5; up to 100m 1000BASE-T: 4-pair UTP Cat. 5; up to 100m Fiber module: Mini GBIC Fiber module
Number of Ports	24 × 10/100/1000Mbps Auto-MDIX RJ-45 ports 2 × Mini GBIC fiber slot
<b>Physical and Environmental</b>	
AC inputs	100-240V AC, 50/60 Hz internal universal power supply
Power Consumption	32 Watts (Max)

Temperature	Operating: 0° ~ 50° C, Storage: -10° ~ 70° C
Humidity	Operating: 10% ~ 90%, Storage: 5% ~ 90%
Dimensions	440 x 210 x 44 mm (W x H x D)
EMI:	FCC Class A, CE Mark Class A
Safety:	CUL

<b>Performance</b>	
Transmits Method:	Store-and-forward
Filtering Address Table:	8K entries per device
Packet Filtering/Forwarding Rate:	1000Mbps Gigabit Ethernet: 1,488,000/pps
MAC Address Learning:	Automatic update
Transmits Method:	Store-and-forward
RAM Buffer:	400K bytes per device