



HG552e Home Gateway User Guide

HUAWEI TECHNOLOGIES CO., LTD.

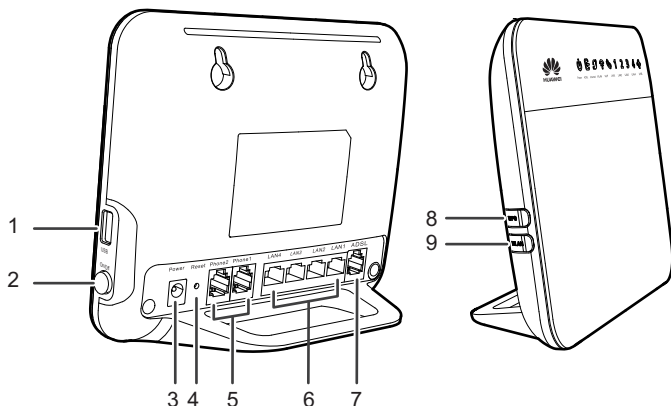




Product Overview	1
Ports and Buttons	1
Indicators	2
Hardware Installation	4
Selecting an Installation Location	4
Connecting Cables	4
Powering On	5
Setting Network Parameters	6
Setting the Computer IP Address	6
Logging In to the Web Management Page	6
Configuring a Wireless Account	6
Setting Dial-Up Connection Parameters	7
Wireless Connection Setup	8
Setting Up a Wireless Connection Using the WPS Button	8
Manually Setting Up a Wireless Connection	8
IP Telephony	10
Introduction to IP Telephony	10
Configuring VoIP	10
Placing a VoIP Call	10
USB Device	11
USB Storage Device	11
Connecting a USB Device	11
Sharing a USB Printer	13
Maintenance Guide	14
Enabling and Disabling the WLAN on the HG552e	14
Changing Your WLAN Name and Password	14
Changing the Web Management Page User Name and Password	14
Restoring Default Settings	15

FAQs	16
What Can I Do If I Cannot Open the Web Management Page?	16
What Can I Do If the HG552e Cannot Access the Internet through a Wireless Network Adapter Sometimes or If the WLAN Connection Is Unsteady?	16
What Can I Do If I Cannot Access the Internet?	16
I Often Need to Restart the HG552e to Display Web Pages. What Can I Do? . . .	19
Appendix	20
Technical Specifications	20
Default Settings	21
For More Help	22
Legal Notice	23

1 Product Overview

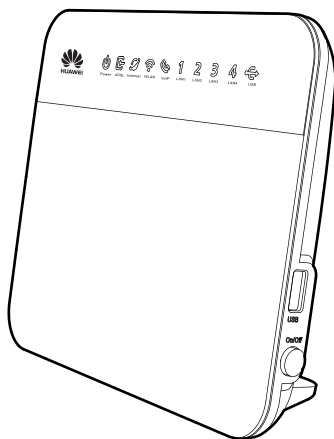
Ports and Buttons



No.	Item	Description
1	USB	Connects to a USB device.  If you connect a USB device to the HG552e, verify that the input voltage and current of the USB device do not exceed 5 V/0.5 A. Otherwise, the HG552e may malfunction.
2	On/Off	Powers the HG552e on or off.
3	Power	Connects to a power adapter.
4	Reset	Restores the HG552e to its default settings after you press and hold this button for 6 seconds or more while the HG552e is powered on.  A reset will result in all custom data and settings being lost. Use with caution.
5	Phone1, Phone2	Connects to a telephone.
6	LAN1 ~ LAN4	Connects to Ethernet devices, such as computers, set-top boxes (STBs), and switches.

No.	Item	Description
7	ADSL	Connects to a DSL filter or phone socket.
8	WPS	Starts Wi-Fi protected setup (WPS) negotiation.
9	WLAN	Enables or disables the WLAN function.

Indicators



Indicator	Status	Description
Power	Steady green	The HG552e is powered on.
	Off	The HG552e is powered off.
ADSL	Steady green	A digital subscriber line (DSL) connection has been set up and activated.
	Blinking green	A DSL connection is being activated.
	Off	No DSL connection has been set up, or the DSL connection is faulty.

Indicator	Status	Description
Internet	Steady green	The HG552e is connected to the Internet in router mode, but no data is being transmitted.
	Blinking green	The HG552e is connected to the Internet in router mode, and data is being transmitted.
	Off	<ul style="list-style-type: none"> > The HG552e is in router mode, but not connected to the Internet. > The HG552e is in bridge mode.
WLAN	Steady green	<ul style="list-style-type: none"> > The HG552e has WLAN enabled, but is not transmitting data. > The HG552e is connected to a wireless client, such as a computer with a wireless network adapter, over the WLAN using the Wi-Fi Protected Setup (WPS) function. The indicator is steady on for 300 seconds.
	Blinking green	<ul style="list-style-type: none"> > Slow blinking (2Hz): The HG552e has WLAN enabled, and data is being transmitted. > Fast blinking (on for 2 seconds and off for 1 second): The HG552e is attempting to connect to a wireless client over the WLAN using the WPS function. The indicator blinks for 120 seconds or less.
	Off	WLAN is disabled.
VoIP	Steady green	The HG552e is registered with a SIP server, but no data is being transmitted.
	Blinking green	The HG552e is registered with a SIP server, and data is being transmitted.
	Off	The HG552e is not registered with a SIP server.
LAN1 ~ LAN4	Steady green	The LAN port is connected to an Ethernet device (such as a computer) with a network cable, but no data is being transmitted.
	Blinking green	The LAN port is connected to an Ethernet device with a network cable, and data is being transmitted.
	Off	The LAN port is not connected to any Ethernet device.
USB	Steady green	The HG552e is connected to a USB device, but no data is being transmitted.
	Blinking green	The HG552e is connected to a USB device, and data is being transmitted.
	Off	The HG552e is not connected to any USB device.

2 Hardware Installation

Selecting an Installation Location

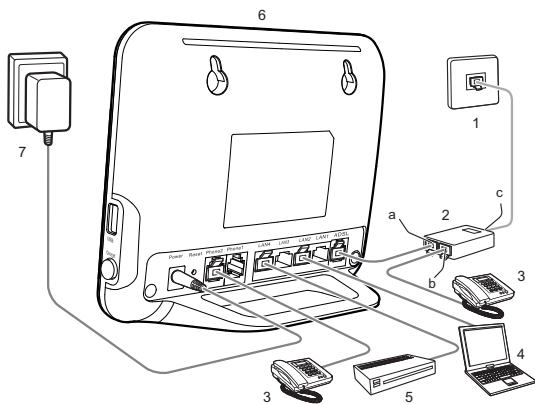
Place the HG552e on a well-ventilated even surface without exposure to direct sunlight. For the best possible performance, take note of the following:

- Make sure there are no obstacles, such as concrete or wooden walls, between the computer and HG552e.
- Ensure that the computer and HG552e are far from electric appliances that generate strong magnetic or electric fields, such as microwave ovens.

Connecting Cables

If you have subscribed to digital subscriber line (DSL) broadband, you can connect the HG552e to a telephone port for Internet access.

Follow the steps in the following figure to connect devices properly.



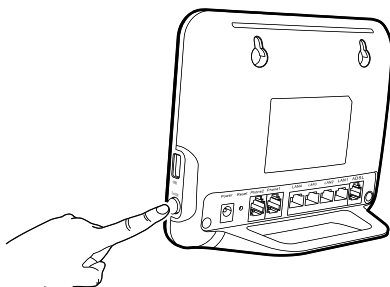
1 Telephone wall jack	2 Splitter	3 Telephone
4 Computer	5 Set-top box	6 HG552e
7 Power adapter		
a MODEM port	b PHONE port	c LINE port



When configuring the HG552e for the first time, use an Ethernet cable to connect the HG552e to a computer.

Powering On

To power on the HG552e, press its power button.



After the HG552e is powered on, the HG552e indicator turns on. The following table lists how the indicators behave when the HG552e is operating correctly. If the indicators do not behave as expected, ensure that everything is plugged in correctly.

Indicator	Expected State
Power	Steady on
ADSL	Steady on or blinking The blinking may last from 40 seconds to 3 minutes. When the indicator stops blinking and remains on, the HG552e is working correctly.
Internet	off (The HG552e is in bridge mode.)
WLAN	Steady on or blinking
LAN1 ~ LAN4	Steady on or blinking (indicator of the connected LAN port)

3 Setting Network Parameters

Setting the Computer IP Address

Before logging in to the HG552e web management page, set the IP address of the computer that will be used for the login.

On Windows 7

1. Choose **start > Control Panel > Network and Internet > Network and Sharing Center**.
2. Choose **Change adapter settings**. Right-click **Local Area Connection** and choose **Properties**.
3. Double-click **Internet Protocol Version 4 (TCP/IPv4)**.
4. Select **Obtain an IP address automatically** and **Obtain DNS server address automatically**. Click **OK**.

On Windows XP

1. Choose **start > Control Panel > Network and Internet Connections**.
2. Click **Network Connections**. Right-click **Local Area Connection** and choose **Properties** from the shortcut menu.
3. Double-click **Internet Protocol (TCP/IP)**.
4. Select **Obtain an IP address automatically** and **Obtain DNS server address automatically**. Click **OK**.

Logging In to the Web Management Page

The HG552e provides an intuitive web management page where you can view or set the HG552e parameters.

Before you log in to the HG552e web management page, ensure that the computer used for the login is connected to the HG552e and has been configured to automatically obtain an IP address or assigned with a static IP address.

1. Open a browser. In the address box, enter **192.168.1.1**. Press **Enter**.
2. Enter the login user name (**admin** by default) and password (**admin** by default). Click **Login**.



To protect against unauthorized access, change the user name and password after the first login. You can change the account parameter on **Maintenance > Account** page.

Configuring a Wireless Account

The HG552e supports configuration wizard page. You can quickly configure the wireless parameters through the configuration wizard page.

1. Log in to the web management page.

2. On the **Quick Configure Home Gateway: Wireless Network** page, set **WLAN SSID** and **Key**, and click **Next**.



To obtain the default SSID and key, check the label on the rear panel. To better secure your WLAN, promptly change the SSID and key. The preceding configuration needs to be performed only once. You can also configure the WLAN SSID and Key by choosing **Basic > WLAN**.

Setting Dial-Up Connection Parameters

Before setting dial-up connection parameters, verify that the HG552e is correctly connected to your computer and you have the dial-up connection account name and password provided by your Internet service provider (ISP). This section demonstrates how to set up a Point-to-Point Protocol over Ethernet (PPPoE) connection on Windows.

On Windows 7

1. Choose **start > Control Panel > Network and Internet > Network and Sharing Center**.
2. Under **Change your networking settings**, click **Set up a new connection or network**.
3. In the **Set Up a Connection or Network** window, select **Connect to the Internet** and click **Next**.
4. Click **Broadband (PPPoE)**.
5. In **User name** and **Password**, enter the dial-up connection account name and password provided by your ISP. In **Connection name**, name the dial-up connection. Select or deselect **Allow other people to use this connection**. Then click **Connect**.
6. Return to the **Network and Sharing Center** page. Click **Change adapter settings**. Right-click the icon for the dial-up connection you just set up and choose **Create Shortcut** from the shortcut menu. In the displayed dialog box, click **Yes**.

On Windows XP

1. Choose **start > Control Panel > Network and Internet Connections > Network Connections**.
2. Under **Network Tasks**, click **Create a New Connection**.
3. In the **Network Connection Wizard** dialog box, click **Next**.
4. Select **Connect to the Internet** and click **Next**.
5. Select **Set up my connection manually** and click **Next**.
6. Select **Connect using a broadband connection that requires a user name and password** and click **Next**.
7. In **ISP Name**, name the dial-up connection. Click **Next**.
8. Select **Anyone's use** or **My use only** and click **Next**.
9. Enter the dial-up connection account name and password provided by your ISP and click **Next**.
10. Select **Add a shortcut to this connection to my desktop** and click **Finish**.

After you successfully set up a PPPoE connection, a dial-up connection icon is displayed on your computer desktop. To connect to the Internet, double-click the dial-up connection icon. In the displayed dialog box, click **Connect**.

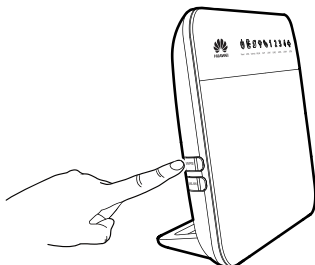
4 Wireless Connection Setup

Setting Up a Wireless Connection Using the WPS Button

Push the WPS button once to quickly set up a wireless connection between the HG552e and any WPS-capable device.

Before you set up a wireless connection using the WPS button, verify the following:

- > The wireless network security mode of the HG552e is WPA2-PSK or WPA-PSK/WPA2-PSK.
 - > The wireless device (laptop, tablet, or mobile phone) to connect to the HG552e is WPS-capable.
1. Press the WPS button on the wireless device to start WPS negotiation. For details, see the user guide for the wireless device.
 2. Within 2 minutes, press and hold the WPS button on the HG552e for 1 second or more. The WLAN indicator blinks.



When the WLAN indicator on the HG552e is steady on, a connection between the HG552e and wireless device is set up.

Manually Setting Up a Wireless Connection

The wireless configuration software provided by Windows is used as an example to describe how to set up a wireless connection.



You can also use the tool built into the network adapter to set up a wireless connection. For details, see the network adapter's user guide.

Before setting up a wireless connection, record the WLAN name and password of the HG552e. The default WLAN name and password are printed on the HG552e cover label.

On Windows 7

1. Choose **start > Control Panel > Network and Internet > Network and Sharing Center > Change adapter settings**. Right-click **Wireless Network Connection**, and select **Connect/Disconnect**.
2. From the wireless network list, select the WLAN provided by the HG552e. Click **Connect**.

3. In the displayed dialog box, enter the WLAN password and click **OK**.
4. In the wireless network list, check the WLAN connection status. If the status is **Connected**, the computer is wirelessly connected to the HG552e.

On Windows XP

1. Choose **start > Control Panel > Network and Internet Connections > Network Connections**. Right-click **Wireless Network Connection** and choose **View Available Wireless Networks** from the shortcut menu.
2. From the wireless network list, select the WLAN provided by the HG552e. Click **Connect**.
3. In the displayed dialog box, enter the WLAN password and click **Connect**.
4. In the wireless network list, check the WLAN connection status. If the status is **Connected**, the computer is wirelessly connected to the HG552e.

5 IP Telephony

Introduction to IP Telephony

IP telephony, namely voice over Internet Protocol (VoIP), is also called broadband telephony or Internet telephony. It utilizes Internet Protocol (IP) network technologies to implement voice communication. During a VoIP call, voice signals are digitized, encoded, packetized, and transmitted as packets over a network. On the receiving side, the packets are then decoded, and digital signals are converted to reproduce the original voice streams, which can be heard by the called party. Different from traditional PSTN calls, VoIP calls are transported over IP networks, meaning voice streams are transmitted over users' existing broadband Internet. This makes full use of broadband resources.

Configuring VoIP

The HG552e supports VoIP. You can place VoIP calls after your phone is connected to the **PHONE** port on the HG552e.



To use the HG552e to place VoIP calls, ask your network service provider to activate VoIP services for you. By default, your network service provider will have all related parameters, such as the VoIP account and address, set for you. You will not need to configure any settings to place VoIP calls.

Placing a VoIP Call

Once your network service provider has activated VoIP services for you, you will be assigned a VoIP account, which is also your VoIP call number.

Before placing a VoIP call, ensure that the HG552e has connected to the network. When the call is established, your VoIP call number is displayed on the called party's phone.



For VoIP call tariffs, contact your network service provider.

6 USB Device

USB Storage Device

USB storage devices use their USB ports to exchange data with other devices.

You can connect a USB storage device to your HG552e and access the USB device from your computer.


Both the USB drive and removable hard disk can connect to your HG552e.

Your HG552e supports the following file systems for reading and writing.

- > FAT32/FAT
- > NTFS

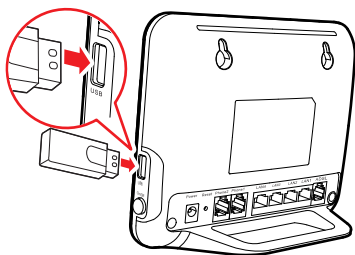
Connecting a USB Device

After you connect a USB device to your HG552e, computers or other devices connected to the HG552e network can access and share the data in or applications provided by the USB device.

 If you connect a USB device to the HG552e, verify that the input voltage and current of the USB device do not exceed 5 V/0.5 A. Otherwise, the HG552e may malfunction.

You can connect the following USB devices to your HG552e:

- > USB storage device
- > USB printer



Setting the FTP Access Permission

To avoid unauthorized access to the USB storage device, you can set the FTP access permission on your HG552e. This allows only authorized users to access the USB storage device.

1. Log in to the web management page.
2. In the navigation tree, choose **Advanced** > **USB Port** and click **FTP Server**.
3. Click **New**.

4. Set **FTP Server** to **Enable**.
5. In **Username** and **Password**, enter a user name and password for the FTP server.
6. In **Path**, enter the path of storage sharing.
7. In **Permission**, select the desired right for the user:
 - > **RW**: The user can read, modify, or delete the existing files, and can also add files to the storage device.
 - > **RO**: The user can only read files in the storage device.
 - > **WO**: The user can only add files to the storage device.
8. Click **Submit**.

Accessing a USB Storage Device Using FTP

You can access a USB storage device through the FTP server.

To access a USB storage device using FTP, connect the USB storage device to your HG552e and set the FTP login parameters.

1. On your computer, open a browser.
2. Enter **ftp://192.168.1.1** in the address box, add then press **Enter**.
3. In the **Login** dialog box, enter the user name and password you set in the HG552e's **FTP Server** page, and then click **Login**.

Once you pass the authentication, the directory of and files in the USB storage device will be displayed.

Setting the Samba Access Permission

To prevent unauthorized users from accessing data stored in USB devices, you can set the Samba access permission for the HG552e. After this permission is set, only authorized users can access data stored in USB devices.

1. Log in to the web management page.
2. In the navigation tree, choose **Advanced > USB Port** and click **Samba**.
3. Click **New**.
4. In **Username** and **Password**, enter a user name and password for the Samba server.
5. In **Right**, select the desired right for the user:
 - > **Read only**: The user can only read files in the storage device.
 - > **Readable & Writable**: The user can read, modify, or delete the existing files, and can also add files to the storage device.
6. Click **Submit**.

Accessing Data Using Samba

Using Samba, you can securely and easily access data stored in USB devices by accessing shared network directories.

You have connected a USB device to the HG552e and set its access permission.

1. On your computer, open a browser.
2. Enter \\192.168.1.1 in the address box, and then press **Enter**.

If the access permission of the USB device is set, your identity will be authenticated. During the authentication, follow the onscreen instructions. When the authentication is successful, you will be able to access data stored in the USB device.

Sharing a USB Printer

USB Printer

HG552e supports USB printers. After you connect a USB printer to your HG552e through the USB port, you can access the printer from the Internet or internal network.

Adding a Network Printer

On Windows 7

1. Choose **start > Devices and Printers**.
2. Choose **Add a printer**.
3. Choose **Add a network, wireless or Bluetooth printer**.
4. Click **The printer that I want isn't listed**.
5. Choose **Select a shared printer by name** and enter the printer address `http://192.168.1.1:631/printers/myprinter` in the text box. **myprinter** is the customized name of the printer to add. Click **Next**.
6. Select the model of the printer you want or click **Have Disk** to manually install the printer drive.
7. Click **OK**.

On Windows XP

1. Choose **start > Printers and Faxes**.
2. Choose **Add a printer**.
3. In the **Add Printer Wizard** dialog box, click **Next**.
4. Choose **A network printer, or a printer attached to another computer** and click **Next**.
5. Choose **Connect to a printer on the Internet or on a home or office network** and enter the printer's address `http://192.168.1.1:631/printers/myprinter` in the **URL** text box. **myprinter** is the customized name of the printer to add. Click **Next**.
6. Select the model of the printer you want or click **Have Disk** to manually install the printer drive. Click **Next**.
7. Determine whether to set the printer as the default printer. Click **Next**.
8. Click **Finish**.

7 Maintenance Guide

Enabling and Disabling the WLAN on the HG552e

Using the WLAN Button

Press the WLAN button in the HG552e to enable or disable the WLAN. To ascertain whether the WLAN is enabled, view the WLAN indicator.

Using the Web Management Page

1. Log in to the web management page.
2. In the navigation tree, choose **Basic > WLAN**.
3. Configure wireless.
 - > Select **Enable WLAN** to enable the WLAN.
 - > Clear **Enable WLAN** to disable the WLAN.

Changing Your WLAN Name and Password

WLAN access requires the WLAN name and password. To improve your WLAN security, regularly change your WLAN name and password.

1. Log in to the web management page.
2. In the navigation tree, choose **Basic > WLAN**.
3. In **SSID**, enter a new WLAN name.
4. Set **SSID** to **Enable**.
5. In **WPA pre-shared key**, enter a new WLAN password.
6. Click **Submit**.

Changing the Web Management Page User Name and Password

The correct user name and password are required to log in to the web management page. Regular changes to the web management page user name and password can effectively prevent unauthorized users from logging in and modifying important parameters.

1. Log in to the web management page.
2. In the navigation tree, choose **Maintenance > Account**.
3. In **New user name**, enter a new user name.
4. In **Current password**, enter the currently used password.
5. In **New password**, enter a new password. In **Confirm password** enter the new password again.
6. Click **Submit**.

After the user name and password are changed, the login page is displayed. Enter your new user name and password to log in.



If you forget the password, you can restore the default settings by pressing and holding the **Reset** button on the rear panel of the HG552e for over 6 seconds. The user name and password used for logging in to the web management page are then restored to their default values. After the HG552e is restored to its default settings, all user customized data will be lost. Perform this operation with caution.

Restoring Default Settings

Using the Configuration Tool

If the HG552e parameter settings were configured incorrectly, log in to the web management page to reload the default configuration file and restore the HG552e to its default settings. Perform this operation with caution. After the HG552e is restored to its default settings, all custom data and settings will be lost, and the password will be restored to **admin**.

1. Log in to the web management page.
2. In the navigation tree, choose **Maintenance > Device**.
3. Click **Restore Default Settings**.
4. In the displayed dialog box, click **OK**.

Using the Reset Button

If you forget the login password to the web management page or could not access the web management page, use the reset button on the HG552e rear panel to restore the HG552e to its default settings. Perform this operation with caution. After the HG552e is restored to its default settings, all custom data and settings will be lost, and the password will be restored to **admin**.

1. Press the HG552e power button to power the HG552e on.
2. Press and hold the reset button for 6 seconds or more.
The HG552e will restart, which will cause temporary network interruptions.



After the HG552e is restored to its default settings, change the computer IP address so that it is in the same network segment as the 192.168.1.1 default IP address.

What Can I Do If I Cannot Open the Web Management Page?

1. Open Internet Explorer. Choose **Tools > Internet Options > Connections > LAN settings**, and ensure that all check boxes are deselected.
2. Check that the computer IP address is 192.168.1.*. (* is any integer from 2 to 254.)
3. Check that the cables are securely connected to the HG552e and that the LAN port's indicator is on.
4. Ensure that the user name and password are correct.

If the problem persists, restore the HG552e to its default settings.

What Can I Do If the HG552e Cannot Access the Internet through a Wireless Network Adapter Sometimes or If the WLAN Connection Is Unsteady?

This is probably because the HG552e has its cables connected loosely, is placed too close to electronic appliances with intensive interference, or is too far from the computer. Verify that:

1. The power and telephone cables are correctly connected to the HG552e.
2. Your computer and the HG552e are far from electric appliances that generate strong magnetic or electric fields, such as microwave ovens, refrigerators, and cordless telephones.
3. The HG552e is in an open area, and there are no obstacles, such as concrete or wooden walls, between the HG552e and computer.
4. The HG552e is close to the computer.
5. The angle between the HG552e and computer is appropriate.



Do not use the HG552e during thunderstorms, as the signal strength may be unsteady and the HG552e itself may be damaged due to lightning strikes.

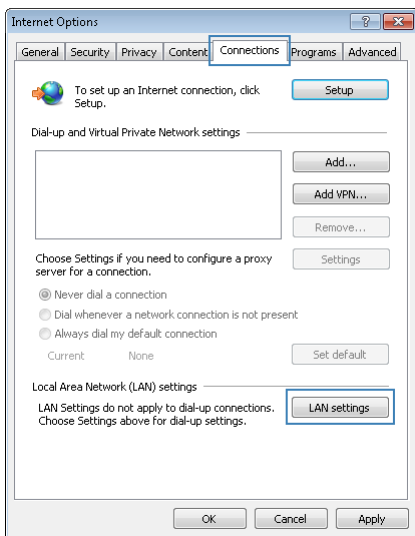
What Can I Do If I Cannot Access the Internet?

1. Check that the **Power** indicator on the HG552e is steady on. If the **Power** indicator is off, perform further checks as follows:
 - a) Check that the HG552e is turned on.
 - b) Check that electricity comes from the socket and that the power input from the socket meets the requirements described on the label of the HG552e's power adapter. If the voltage is unstable, for example, if the voltage is too high or too low, do not use the HG552e. Wait until the voltage recovers, and then use the HG552e.
 - c) Check that the HG552e is securely connected to the socket using its power adapter. If the **Power** indicator is still off, contact an authorized maintenance center.

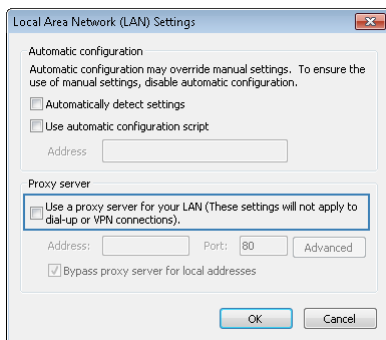
2. After powering on the HG552e, wait for about 3 minutes. Then check whether the **ADSL** indicator turns steady on.
 - a) Check that the telephone line is correctly and securely connected, especially the connection between the telephone line and the splitter.
 - b) Check that the HG552e and telephone line are located far from any electric appliances that generate strong magnetic or electric fields. Replace the telephone line when necessary.If the **ADSL** indicator is still off, contact your network service provider.
3. Check whether the **LAN** indicator is on. If the **LAN** indicator is off, perform further checks as follows:
 - a) Check that the network adapter on your computer is enabled.
 - b) Check that the network cable between the HG552e and the computer is securely connected. Remove and then insert the network cable or replace the network cable when necessary.If the **LAN** indicator is still off, contact an authorized maintenance center.
4. Check that the driver for the network adapter is correctly installed. The following example uses a computer running the Windows XP operating system to check whether the driver for the network adapter is installed:
 - a) Right-click **My Computer**, and choose **Manage** from the displayed shortcut menu.
 - b) In the **Computer Management** window, click **Device Manager**.
 - c) In the right pane of the **Computer Management** window, click **Network adapters**.

If no network adapter is found or if a question mark (?) or an exclamation mark (!) is displayed next to the network adapter icon, the driver for the network adapter is not correctly installed. Re-install the driver.
5. Check that PPP dial-up software is installed and parameters are set correctly. For details about parameter settings, see the user guide for the PPP dial-up software.
6. Check that you have entered the correct user name and password required by the PPP dial-up software. The user name and password are provided by your network service provider.
7. Check that you can use the PPP dial-up software to set up dial-up connection. If the dial-up connection fails, perform further checks as follows:
 - a) Close the PPP dial-up software, and power off the HG552e. After 5 minutes, power on the HG552e, and use the PPP dial-up software to dial again.
 - b) Restore the HG552e to its default settings.If the problem persists, contact your network service provider.
8. Check that the proxy server of the browser is correctly configured. The following example uses Internet Explorer on the Windows XP operating system to check whether the proxy server of the browser is correctly configured:
 - a) Launch Internet Explorer.
 - b) Choose **Tools > Internet Options**.
 - c) In the **Internet Options** dialog box, click the **Connections** tab.

- d) In the **Local Area Network (LAN) settings** area, click **LAN Settings**.



- e) In the **Proxy server area of the Local Area Network (LAN) Settings** dialog box, check that the **Use a proxy server for your LAN (These settings will not apply to dial-up or VPN connections)** checkbox is cleared.



9. Try to access more websites to check whether the HG552e can access these websites. If the problem persists, contact your network service provider.

I Often Need to Restart the HG552e to Display Web Pages. What Can I Do?

Verify the following:

- 1.** The HG552e and other devices such as telephones or fax machines are connected to the plain old telephone service (POTS) line through a digital subscriber line (DSL) filter. For details about how to install a DSL filter, see the description in the DSL filter manual.
- 2.** Cables are securely connected to HG552e ports. Otherwise, network stability may suffer.
- 3.** Your computer and the HG552e are far from electric appliances that generate strong magnetic or electric fields, such as microwave ovens, refrigerators, and cordless telephones.

If the problem persists, contact your Internet Service Provider.

9 Appendix

Technical Specifications

Item	Specifications	
Power supply	12 V DC, 1 A	
Power consumption	< 12 W	
Ambient operating temperature	0°C to 40°C	
Ambient humidity	5% to 95% RH (non-condensing)	
Dimensions (H x W x D)	145 mm x 175 mm x 33 mm (5.71 in. x 6.89 in. x 1.30 in.), rack excluded 145 mm x 175 mm x 72 mm (5.71 in. x 6.89 in. x 2.83 in.), rack included	
Weight	About 300 g	
DSL standard	ADSL standard	ITU G.992.1 (G.dmt) ITU G.994.1 (G.hs) ANSI T1.413 Issue 2
	ADSL2 standard	ITU G.992.3 (G.dmt.bis) Annex A ITU G.992.3 (G.dmt.bis) Annex L ITU G.992.3 (G.dmt.bis) Annex M
	ADSL2+ standard	ITU G.992.5 (G.dmt.bitplus) Annex A ITU G.992.5 (G.dmt.bitplus) Annex M
	WLAN standard	802.11b, 802.11g, and 802.11n (2.4 GHz)
DSL transmission rate	G.dmt T1.413	Downlink: 8 Mbit/s Uplink: 896 kbit/s
	ADSL	Downlink: 12 Mbit/s Uplink: 1024 kbit/s
	ADSL2+	Downlink: 24 Mbit/s Uplink: 1024 kbit/s
Wireless transmission rate	802.11b	Up to 11 Mbit/s
	802.11g	Up to 54 Mbit/s
	802.11n (2T2R antenna technology)	Up to 300 Mbit/s

Default Settings

Parameter	Default Value
LAN port IP address	192.168.1.1
LAN port subnet mask	255.255.255.0
User name to log in to the web configuration page	admin
Password to log in to the web configuration page	admin
WLAN name	Labeled on the product cover
WLAN password	Labeled on the product cover
Dynamic Host Configuration Protocol (DHCP) server	Enabled
WLAN	Enabled

10 For More Help

Please visit <http://consumer.huawei.com/en/support/hotline> for recently updated hotline and email address in your country or region.

11 Legal Notice

Copyright © Huawei Technologies Co., Ltd. 2015. All rights reserved.

No part of this manual may be reproduced or transmitted in any form or by any means without prior written consent of Huawei Technologies Co., Ltd. and its affiliates ("Huawei").

The product described in this manual may include copyrighted software of Huawei and possible licensors. Customers shall not in any manner reproduce, distribute, modify, decompile, disassemble, decrypt, extract, reverse engineer, lease, assign, or sublicense the said software, unless such restrictions are prohibited by applicable laws or such actions are approved by respective copyright holders.

Trademarks and Permissions



HUAWEI, HUAWEI, and



are trademarks or registered trademarks of Huawei Technologies Co., Ltd.

Other trademarks, product, service and company names mentioned may be the property of their respective owners.

Notice

Some features of the product and its accessories described herein rely on the software installed, capacities and settings of local network, and therefore may not be activated or may be limited by local network operators or network service providers.

Thus, the descriptions herein may not exactly match the product or its accessories which you purchase.

Huawei reserves the right to change or modify any information or specifications contained in this manual without prior notice and without any liability.

DISCLAIMER

ALL CONTENTS OF THIS MANUAL ARE PROVIDED "AS IS". EXCEPT AS REQUIRED BY APPLICABLE LAWS, NO WARRANTIES OF ANY KIND, EITHER EXPRESS OR IMPLIED, INCLUDING BUT NOT LIMITED TO, THE IMPLIED WARRANTIES OF MERCHANTABILITY AND FITNESS FOR A PARTICULAR PURPOSE, ARE MADE IN RELATION TO THE ACCURACY, RELIABILITY OR CONTENTS OF THIS MANUAL.

TO THE MAXIMUM EXTENT PERMITTED BY APPLICABLE LAW, IN NO EVENT SHALL HUAWEI BE LIABLE FOR ANY SPECIAL, INCIDENTAL, INDIRECT, OR CONSEQUENTIAL DAMAGES, OR LOSS OF PROFITS, BUSINESS, REVENUE, DATA, GOODWILL SAVINGS OR ANTICIPATED SAVINGS REGARDLESS OF WHETHER SUCH LOSSES ARE FORSEEABLE OR NOT.

THE MAXIMUM LIABILITY (THIS LIMITATION SHALL NOT APPLY TO LIABILITY FOR PERSONAL INJURY TO THE EXTENT APPLICABLE LAW PROHIBITS SUCH A LIMITATION) OF HUAWEI ARISING FROM THE USE OF THE PRODUCT DESCRIBED IN THIS MANUAL SHALL BE LIMITED TO THE AMOUNT PAID BY CUSTOMERS FOR THE PURCHASE OF THIS PRODUCT.

Import and Export Regulations

Customers shall comply with all applicable export or import laws and regulations and be responsible to obtain all necessary governmental permits and licenses in order to export, re-export or import the product mentioned in this manual including the software and technical data therein.

Privacy Policy

To better understand how we protect your personal information, please see the privacy policy at <http://consumer.huawei.com/privacy-policy>.

ErP Product Information

Hereby, Huawei Technologies Co.,Ltd. declares that the product meets the directive 2009/125/EC and its implementation regulation (EC) NO 1275/2008 amended by (EC) 278/2009, (EC) 642/2009, (EU) 617/2013, (EU) 801/2013, and its implementation regulation (EC) NO 278/2009.

The power consumption of product in networked standby if all wired network ports are connected and all wireless network ports are activated is 6.6 W.

For the product information displayed on the manufacturers' freely accessible websites required by (EU) No 801/2013, please visit <http://consumer.huawei.com/certification>.

