

Technical Support

Thank you for selecting NETGEAR products.

After installing your device, locate the serial number on the label of your product and use it to register your product at NETGEAR.com/register. Registration is required before you can use the telephone support service. Registration through our website is strongly recommended.

Go to support.netgear.com for product updates and web support.

NETGEAR, Inc.
350 East Plumeria Drive
San Jose, CA 95134, USA



201-15853-01

July 2012

NETGEAR®

Connect with Innovation™

N750 Wireless Dual Band Gigabit ADSL Modem Router DGND4000 Premium Edition Installation Guide



Package Contents

The box should contain the following items. If any items are incorrect, missing, or damaged, contact your NETGEAR dealer.



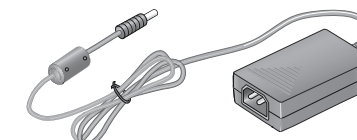
DGND4000
Modem Router



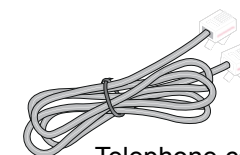
Filter/splitter



Ethernet cable

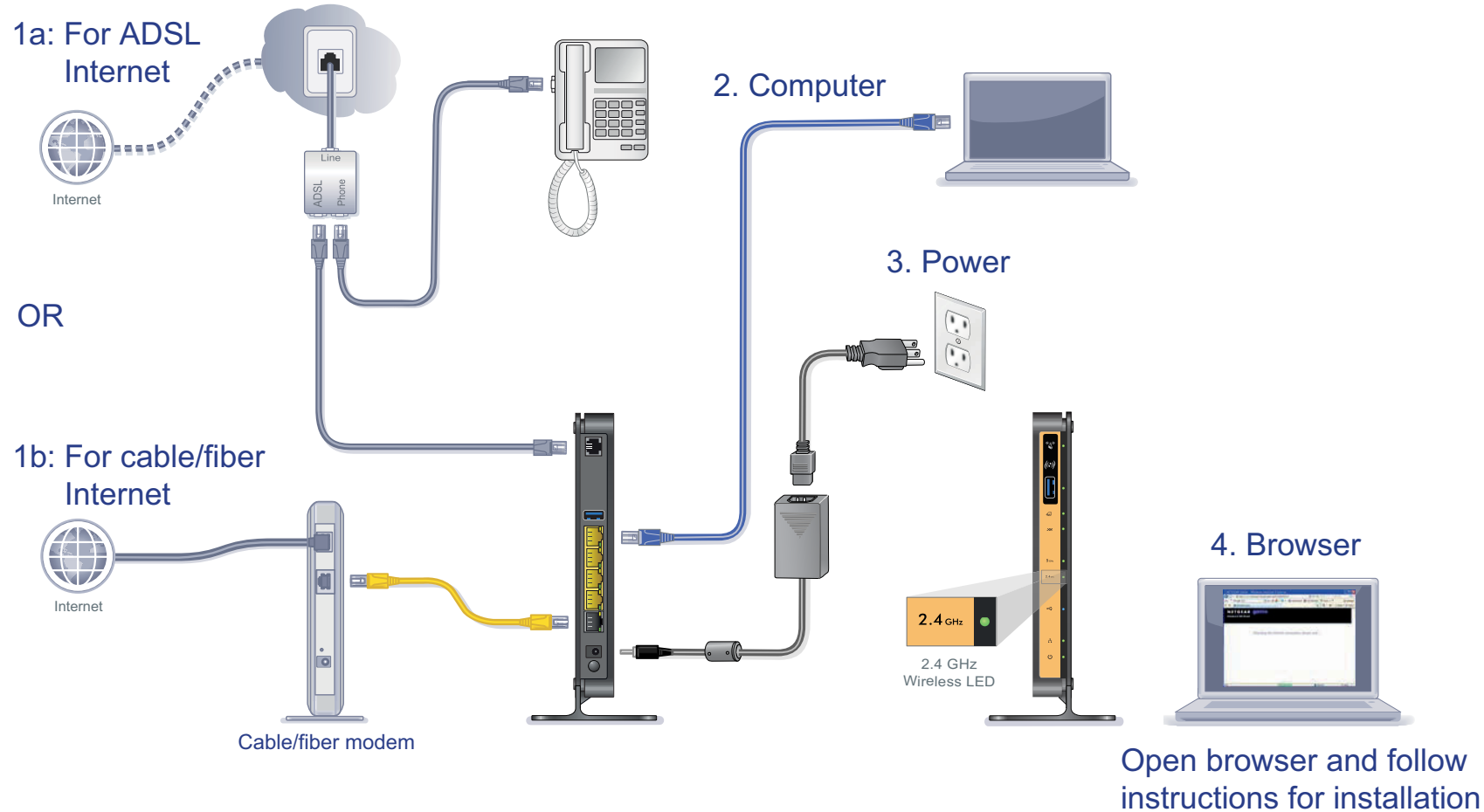


Power adapter (2 parts)



Telephone cable

You can use this diagram to connect your modem router to ADSL (1a) or cable/fiber (1b), or you can follow the instructions in this booklet.



Note: A user manual is available online at <http://downloadcenter.netgear.com> or through a link in the modem router's user interface.

Compliance

Declarations of Conformity

For complete DoC please visit the NETGEAR EU Declarations of Conformity website at support.netgear.com/app/answers/detail/a_id/11621/.



This symbol is placed in accordance with the European Union Directive 2002/96 on the Waste Electrical and Electronic Equipment (the WEEE Directive). If disposed of within the European Union, this product should be treated and recycled in accordance with the laws of your jurisdiction implementing the WEEE Directive.



For indoor use only in all EU countries and Switzerland.

Contents

Before You Begin	2
Install Your Modem Router	3
Preset Wireless Security	6
Wireless Network Settings	7
Add Wireless Devices to the Network	8
WPS Method	8
Manual Method	8
Access the N750 Router to Make Changes	9
Troubleshooting	11
NETGEAR genie App	13
NETGEAR genie Mobile App	14
ReadySHARE Access	15
ReadySHARE Cloud	16
ReadySHARE Print	17
Control Center Configuration	18
USB Printer	19
Scan with a Multifunction Printer	20
Time Machine	21
Other Features	22

Before You Begin

You can connect directly to a DSL line or to a cable/fiber modem.

Note: If you are connecting to a DSL line, make sure that your DSL service is active before you install the modem router. You need the information listed here to install your DSL modem and connect to the Internet. Locate it and have it on hand before you start the installation procedure.

- **DSL user name and password.** These are included in the welcome letter your DSL ISP sent you when you signed up for your service. Record your DSL Internet service account user name and password here:

User name: _____

Password: _____

- **Your telephone number or DSL account number.** If you do not have voice service, you can use your DSL account number in place of a phone number.

If you do not know or cannot locate your user name and password, call your DSL Internet service provider.

Be specific when speaking with your DSL Internet service provider. For example, you could say:

I need my DSL service user name and password. Can you help me?

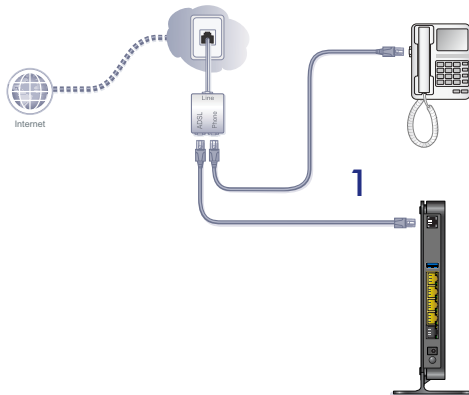
Note: If your provider says that they do not support NETGEAR devices, tell them you need only your DSL user name and password; you do not need support.

Install Your Modem Router

Note: Keep your modem router in a vertical position.

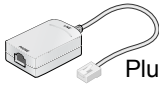
➤ **To install your modem router:**

1. Connect to the Internet with ADSL or Ethernet WAN.
You can connect either directly to a DSL line or to a cable/fiber modem.
 - a. Connect to ADSL (if connecting directly to a DSL line).



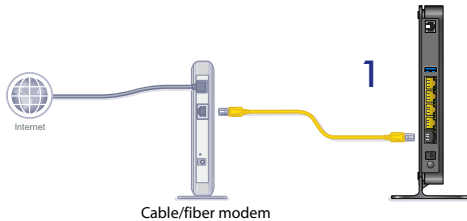
- Install an ADSL microfilter between the phone line and the phone. A microfilter filters DSL interference out of standard phone equipment that shares the line with the DSL service. Example devices are telephones, fax machines, answering machines, and caller ID displays.
- Connect the ADSL port of the modem router to the ADSL port of the microfilter.

Note: Use an ADSL microfilter for every phone line in the house if your modem router and telephone connect to the same phone line.



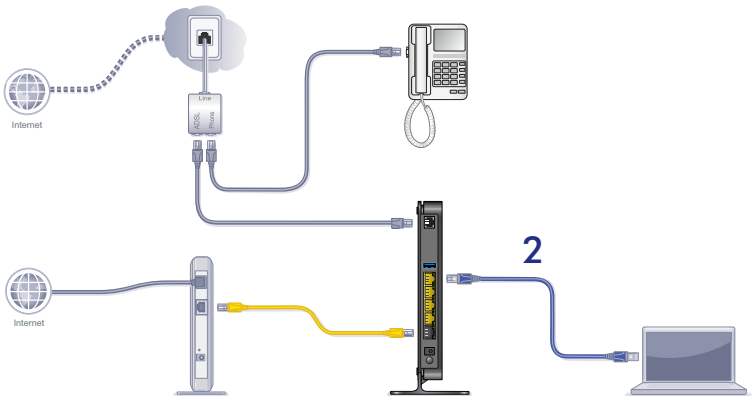
Plugs into ADSL line

- b. Connect to cable or fiber (if connecting to a cable/fiber modem).

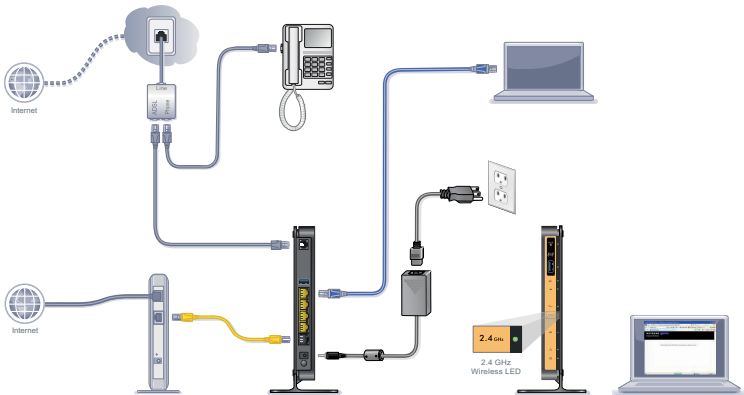



2. Cable your computer.

Use an Ethernet cable (not provided).



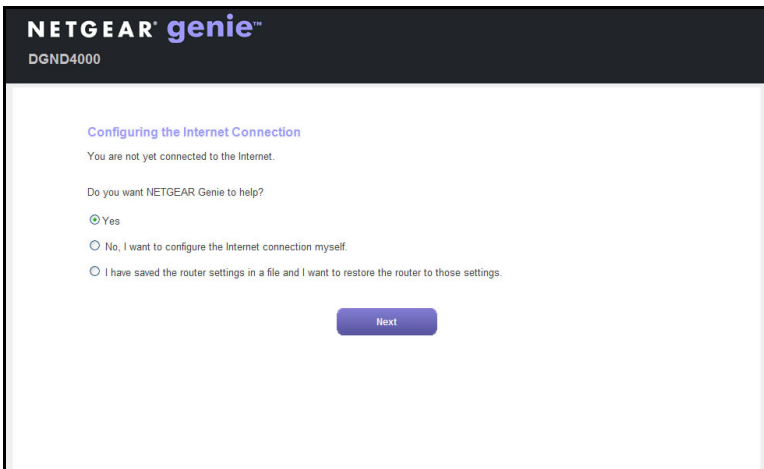
3. Power on your router.



- a. Connect the power adapter to the router, and plug the power adapter into an outlet.
- b. Wait until the 2.4 GHz Wireless LED  turns solid green.

4. Open a browser.

The NETGEAR genie installation wizard displays.



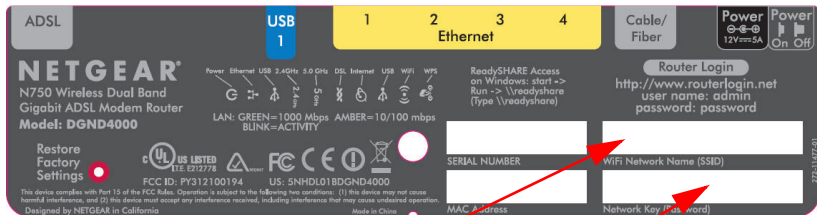
If you do not see the genie screen, close and reopen the browser, and enter **http://routerlogin.net** in the address bar. See [Troubleshooting](#) on page 11.

5. Click **Next** to allow the genie to help you. Follow the steps to set up your Internet connection.

Note for DSL: If your DSL Internet service requires a user name or password, you are prompted to enter this information. If you do not have this information, contact your Internet service provider (see [Before You Begin](#) on page 2).

Preset Wireless Security

This product has a *unique* WiFi network name (SSID) and network key (password). The default SSID and network key (password) are uniquely generated for every device, like a serial number, to protect and maximize your wireless security. This information is on the label on the bottom of the product.



WiFi network name (SSID)

Network key (password)

NETGEAR recommends that you do not change the preset WiFi network name (SSID) and network key (password). If you do change the settings, the security SSID and password on the bottom of the product no longer apply.

Note: Your network names (SSIDs) and passphrases are case-sensitive. Your network name, security method, and passphrase need to be the same for all the wireless devices that are connected to your router on a network.

Wireless Network Settings

Record the default preset wireless settings that are printed on the label in the spaces here for easy reference.

2.4-GHz WiFi network name (SSID): _____

2.4-GHz network key (password): _____

5-GHz WiFi network name (SSID): _____

5-GHz network key (password): _____

If you change the default settings, record them here for easy reference, and then store this booklet in a safe place:

2.4-GHz WiFi network name (SSID): _____

2.4-GHz network key (password): _____

5-GHz WiFi network name (SSID): _____

5-GHz network key (Password): _____

To retrieve or update your wireless password, type **http://www.routerlogin.net** in a web browser and log in using the default user name (admin) and password (password).


Select **Wireless** to locate your wireless passwords.

Add Wireless Devices to the Network

Choose either the manual or Wi-Fi Protected Setup (WPS) method to add wireless computers and other devices to your wireless network.

WPS Method

If your wireless device supports WPS (Wi-Fi Protected Setup)—NETGEAR calls this method Push 'N' Connect—you might be prompted to press the WPS button on the router instead of entering a password. If this happens:

1. Press the **WPS** button  on the router.
2. Within 2 minutes, press the **WPS** button on the client device, or follow the WPS instructions that came with your wireless device to complete the WPS process. The device is then connected to your router.
3. Repeat this process to add other WPS wireless devices.

Note: WPS does not support WEP security. If you try to connect a WEP client to your network using WPS, it does not work.

Manual Method

1. On the wireless device that you want to connect to your router (iPhone, laptop, computer, gaming device), open the software utility that manages its wireless connections. This utility scans for all wireless networks in your area.
2. Look for the preset NETGEAR WiFi network name (SSID) and select it. The SSID is on the product label on the bottom of the router.

Note: If you changed the name of your network during the setup process, look for that network name.

3. Enter the preset password (or your custom password if you changed it), and click **Connect**.

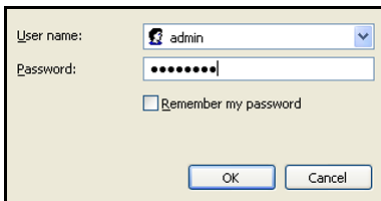
Repeat steps 1–3 to add other wireless devices.

Access the N750 Router to Make Changes

After you use NETGEAR genie to set up the router, you can log in to the router to view its settings or make changes.

➤ **To log in to the router:**

1. Launch a web browser from a computer or wireless device that is connected to the router.
2. Type **www.routerlogin.net** or **www.routerlogin.com** in the address field of the browser. A login screen displays:



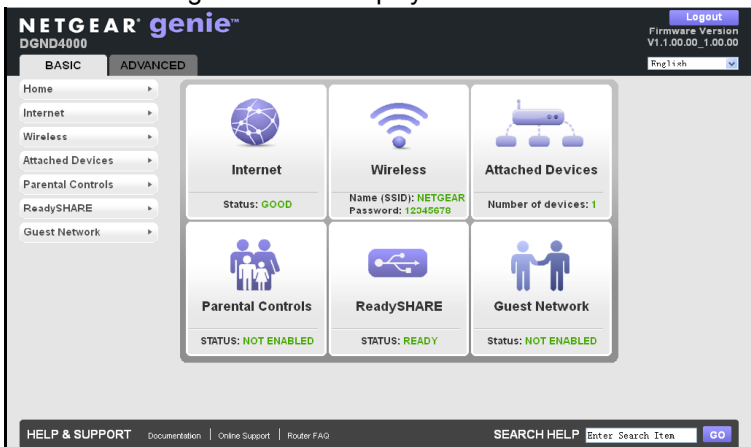
User name: admin

Password: [masked]

Remember my password

OK Cancel

3. Enter **admin** for the user name and **password** for the password. The NETGEAR genie screen displays:



NETGEAR genie™
DGND4000

Logout
Firmware Version
V1.1.00.00_1.00.00
English

BASIC | ADVANCED

Home | Internet | Wireless | Attached Devices | Parental Controls | ReadySHARE | Guest Network

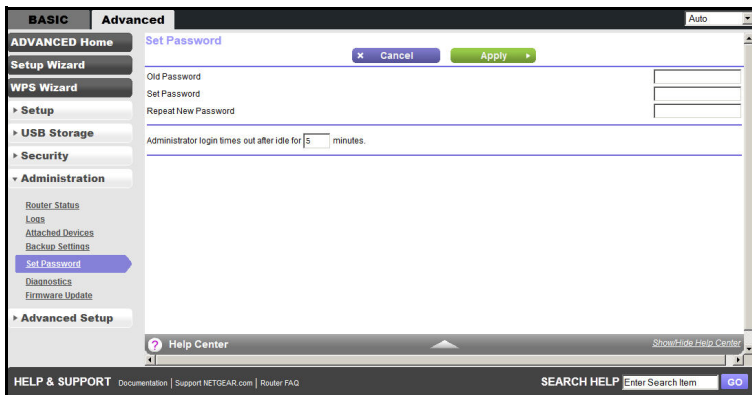
 Internet Status: GOOD	 Wireless Name (SSID): NETGEAR Password: 12345678	 Attached Devices Number of devices: 1
 Parental Controls STATUS: NOT ENABLED	 ReadySHARE STATUS: READY	 Guest Network Status: NOT ENABLED

HELP & SUPPORT | Documentation | Online Support | Router FAQ | SEARCH HELP | Enter Search Item | GO

See the *User Manual* for more information about the router screens.

➤ **To change the password for the router user name:**

1. Log in to the router.
2. Select **Advanced > Administration > Set Password** to display the Set Password screen:



3. Type your old password, and type the new password twice.

Troubleshooting

If the browser does not display the web page:

- Make sure that the computer is connected to one of the four LAN Ethernet ports, or wirelessly to the router.
- Make sure that the router is fully up and running. Its WiFi LED should turn on.
- Close and reopen the browser to make sure that the browser does not cache the previous page.
- Browse to <http://routerlogin.net>.
- If the computer is set to a static or fixed IP address (this is uncommon), change it to obtain an IP address automatically from the router.

If the modem router does not power on:

1. Check your cables.
 - Disconnect and reconnect each cable. There is usually an audible click when the cable is correctly connected.
 - See if the telephone cable connecting your DSL modem router to the wall jack is plugged into a filter. A filter is not required if you do not have telephone voice service. A filter that is installed where it is not needed might eliminate your ADSL signal.
2. Power down your DSL modem router, and then power it up again.
 - a. Shut down your computer and turn off the modem router.
 - b. Unplug the power adapter and all other cables from the back of the DSL modem router.
 - c. Wait 30 seconds, then reconnect the cables and adapter to your DSL modem router, and turn it on.
 - d. Make sure that the router power light is on. If the light is off, try plugging the adapter into another power outlet.

e. Turn your computer back on, and wait for the indicator lights to turn green.

3. Open a web browser and try to access the Internet.

If steps 1–3 do not resolve the problem:

4. Reset your modem.

To reset your DSL modem router, use a pin or paper clip to press in and hold the **Reset** button.

NETGEAR genie App

The genie app is your home network dashboard. It lets you easily view, manage, and control your entire home network, and helps you fix common network problems. You can use the genie app or the genie mobile app.



genie app

Visit the NETGEAR genie web page at www.netgear.com/genie.

From the genie app, you can do the following:

- **Internet.** Monitor and repair Internet connectivity issues, for both wired and wireless connections.
- **WiFi Connection.** View or change your router wireless settings.
- **Router Settings.** Log in to your router to view or change its settings.
- **Network Map.** View network devices connected to your network.
- **Parental Controls.** Manage Parental Controls to protect devices in your network from inappropriate contents.
- **ReadySHARE.** If you connected a USB storage device or printer to the USB port on the router, then you can access its contents.
- **Support.** Support FAQs are available on your computer without an Internet connection. You can get answers to common router issues here. Some simple network tools are available to help you debug the network as well.

NETGEAR genie Mobile App

➤ **To install the genie mobile app:**

1. Using your mobile device, navigate to the Apple AppStore or Google Play for Android, and search for NETGEAR genie. You can use the following QR codes to speed up this process:



iPad App

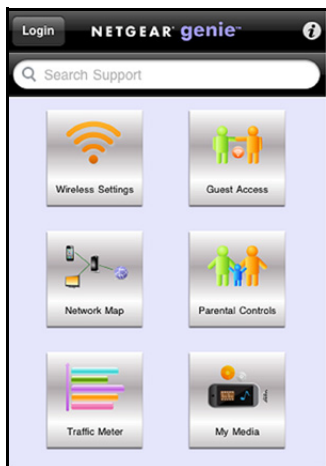


iPhone App



Android App

2. Install the app on your iPad or phone.
3. Launch the app, and it displays the dashboard screen.

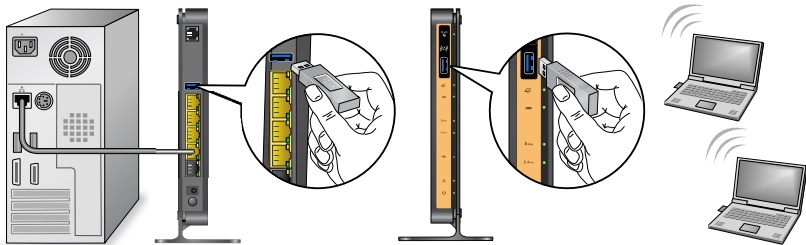


To use this app, you need a Wi-Fi connection from your phone or iPad to your NETGEAR home network.

- Manage Wi-Fi settings and guest access for your home network.
- View a map of your network.
- Set up or manage Parental Controls.
- Use Traffic Meter to check your Internet usage.
- With My Media, play media on devices on your network.

ReadySHARE Access

After installation and setup, you can insert a USB storage device into the USB port on the modem router and share the contents with other network users. (If your USB device has special drivers, it is not compatible.)



Note: If your USB device requires a power supply, you have to use it when connecting your USB device to a NETGEAR router or gateway. It might take up to 2 minutes before the USB drive is ready for sharing after it is connected to the router.

➤ To access your USB device:

On Windows systems, use any of these methods:

- Select **Start > Run** and enter **\\readysare** in the dialog box. Click **OK**.
- Open Explorer or Safari and enter **\\readysare** in the address bar.
- Open My Network Places, and enter **\\readysare** in the address bar.

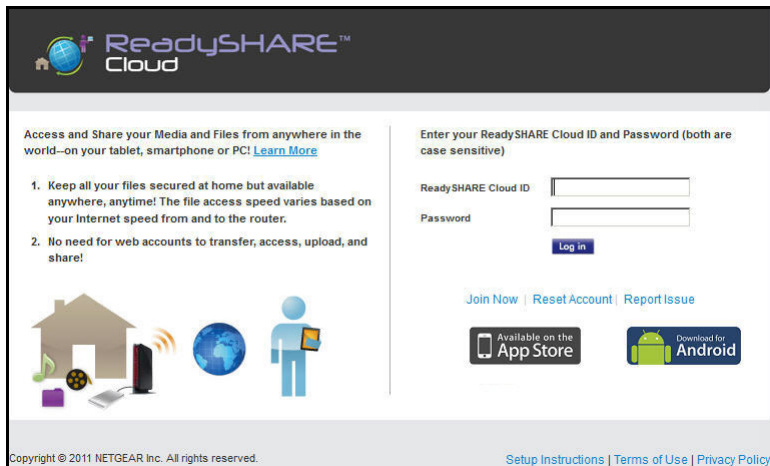
On Mac systems, do this:

1. Select **Go > Connect to Server**.
2. Enter **smb://readysare** as the server address.
3. Click **Connect**.

The readyshareconnect.exe file (for Windows) is available to download here: www.netgear.com/readystatechange

ReadySHARE Cloud

ReadySHARE Cloud allows you to access and share files on an attached USB hard drive anywhere you have an Internet connection. To set up your account, go here: readystatechange.netgear.com



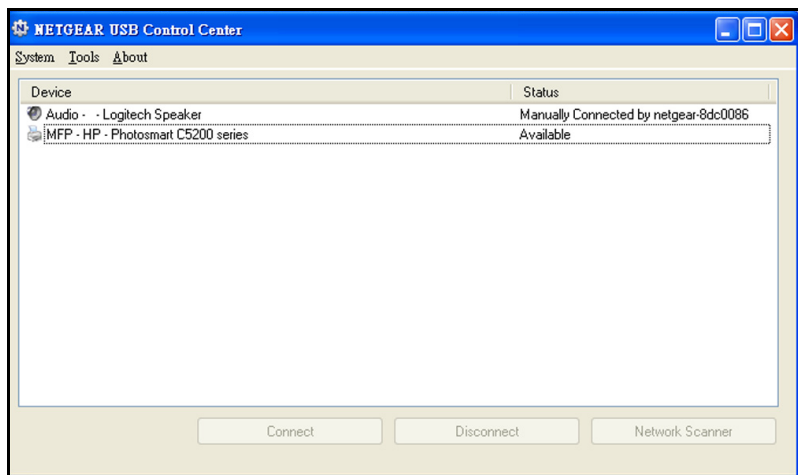
The screenshot shows the ReadySHARE Cloud login interface. At the top left is the logo, which includes a globe icon and the text "ReadySHARE™ Cloud". Below the logo, on the left side, is a section titled "Access and Share your Media and Files from anywhere in the world—on your tablet, smartphone or PC! [Learn More](#)". This section contains two numbered points: "1. Keep all your files secured at home but available anywhere, anytime! The file access speed varies based on your Internet speed from and to the router." and "2. No need for web accounts to transfer, access, upload, and share!". Below the text are icons for a house, a globe, and a person with a tablet. On the right side, there is a login form with the heading "Enter your ReadySHARE Cloud ID and Password (both are case sensitive)". It includes two input fields labeled "ReadySHARE Cloud ID" and "Password", followed by a "Log in" button. Below the login form are links for "Join Now", "Reset Account", and "Report Issue". At the bottom of the page, there are two buttons: "Available on the App Store" and "Download for Android". The footer contains the copyright notice "Copyright © 2011 NETGEAR Inc. All rights reserved." and links for "Setup Instructions", "Terms of Use", and "Privacy Policy".

ReadySHARE Print

The USB Control Center utility allows you to control a shared USB device from your computer that is connected to the USB port on your router. The utility allows you to control a printer.

The utility has to be installed on each computer on your network from which you want to control the device. You can download this utility at www.netgear.com/landing/en-us/readystatechange.aspx.

When you launch the USB Control Center utility, a screen similar to the following displays:



This is the main screen, which shows a device icon, the description for this USB device, and its status.

Available. The device is available from the computer that you are using.

Waiting to Connect. You need to connect to this device from the computer that you are using. If this is the first time you are connecting, you might be prompted to install the device driver.

The following menu selections are available:

- **System.** Exit the utility.
- **Tools.** Access the Control Center Configuration screen to set up your shared USB device. See the following section, [Control Center Configuration](#).
- **About.** View details about the USB Control Center software.

Control Center Configuration

Select **Tools > Configuration** to display the following screen:



Automatically execute when logging on Windows. Select this check box to have the utility start automatically when you are logged in to Windows.

Timeout. Specify the time-out value for holding the USB resource when it is not in use.

Language. Select the display language for this utility.

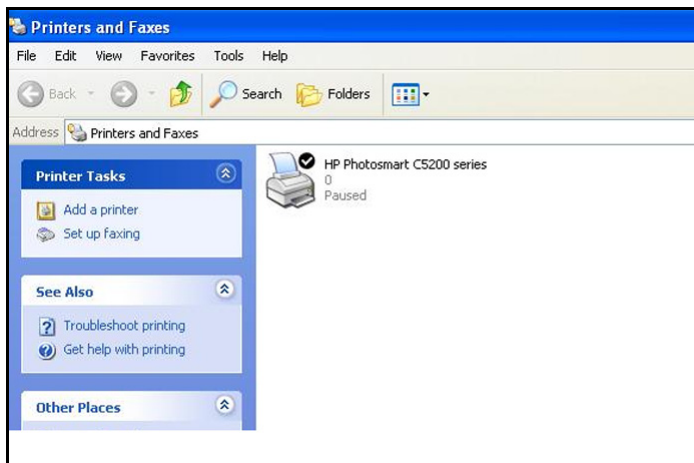
USB Printer

The first time that you use a printer, you need to click **Connect**. You might be asked to install the driver for this printer. After the driver is installed, the printer status changes to Available.

Note: Some USB printers (for example: HP and Lexmark printer) request that you do not connect the USB cable until you are prompted by the installation software.

If the USB printer is detected and connected automatically, you need to disconnect the printer, and then wait for the prompt asking you to click **Connect**.

Once the printer shows Available status, the grayed-out Paused state no longer displays in the Windows Printers and Faxes window.



This USB printer is ready. The utility does not always need to hold the connection of this USB printer. Once there is any print job for this printer, the USB utility connects to this USB printer automatically, then

prints. After the print job is done, the printer status returns to the Paused state.

Scan with a Multifunction Printer

You can use the scan feature of a multifunction printer.

1. Make sure that the printer's status shows as Available.
2. Click the **Network Scanner** button.
This activates the scanner window that is used to perform the scans.

Time Machine

Time Machine works on Mac computers only, and automatically backs up everything on your computer to a USB hard drive connected to it. Here is how it works:

Note: If you are already using Time Machine software with your USB hard drive, you can skip [Steps 1](#) through [3](#) and go to [Step 4](#).

1. Physically connect the USB hard drive to your Mac.
2. Format your USB hard drive.
3. Open the disk utility and format your drive.
4. You can now use Time Machine wirelessly by connecting the USB hard drive to your DGND4000 router.
5. From your MAC desktop, open **Macintosh HD**.
6. Click the **Connect As** button. In the pop-up window, select **Registered User**, and enter **admin** as the user name and **password** as the password. Click **Connect**.
7. After connecting successfully, you can list your connected devices. Note that you see one extra device, called *admin*, whenever you log in as **admin**.
8. Click the **Use for Backup** button to complete your selection.
9. Enter the password (**password**), and the backup begins.

Other Features

For additional features, including Live Parental Controls, Traffic Metering, ReadySHARE, Guest Access, and more, please log in to your router at <http://routerlogin.net>.

© 2012 NETGEAR, Inc. All rights reserved.

No part of this publication may be reproduced, transmitted, transcribed, stored in a retrieval system, or translated into any language in any form or by any means without the written permission of NETGEAR, Inc.

DO NOT stack equipment, or place equipment in tight spaces or in drawers. Be sure that your equipment is surrounded by at least 2 inches (5 cm) of air space.

Trademarks

NETGEAR, the NETGEAR logo, and Connect with Innovation are trademarks and/or registered trademarks of NETGEAR, Inc. and/or its subsidiaries in the United States and/or other countries. Information is subject to change without notice. Other brand and product names are registered trademarks or trademarks of their respective holders. © 2012 NETGEAR, Inc. All rights reserved.

Statement of Conditions

In the interest of improving internal design, operational function, and/or reliability, NETGEAR reserves the right to make changes to the products described in this document without notice. NETGEAR does not assume any liability that may occur due to the use or application of the product(s) or circuit layout(s) described herein.