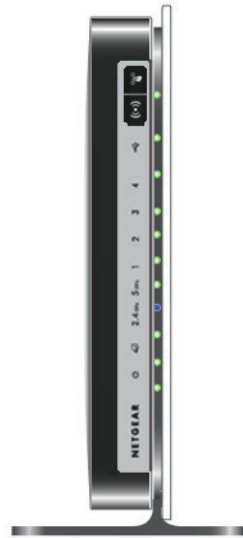
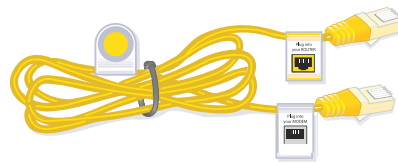


### N750 Wireless Dual Band Gigabit Router WNDR4300

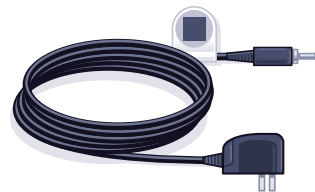
#### Package Contents:



N750 Wireless Router



Ethernet Cable



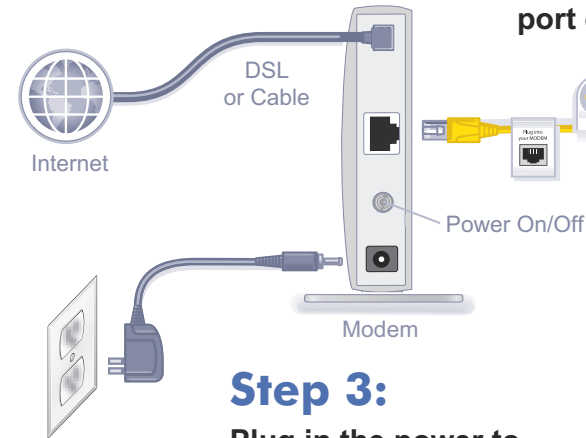
Power Adapter

#### Step 1:

Unplug the power to turn off your modem.

#### Step 2:

Connect one end of the yellow Ethernet cable to your modem, and the other end to the Internet port on your router.



#### Step 3:

Plug in the power to turn on your modem.

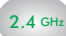


Wait approximately 2 minutes until your modem turns on.

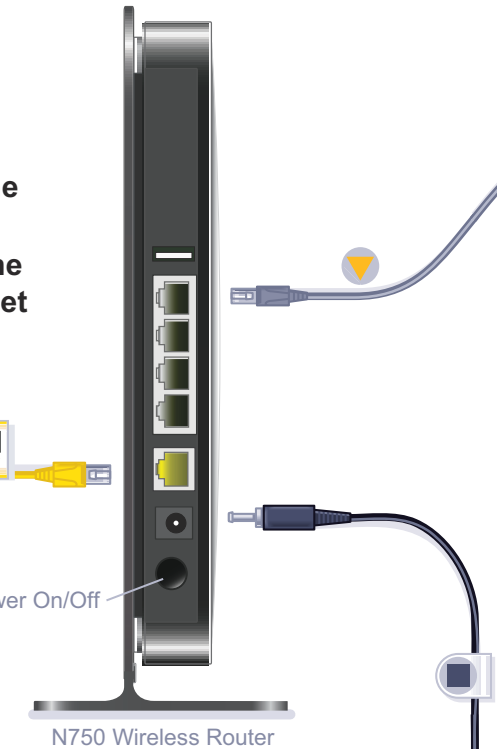
If your modem has a battery backup, first remove and reinsert the battery before connecting your modem to power.

#### Step 4:


Connect the power adapter to the router, then plug it into an outlet.

Wait for the 2.4 GHz LED (  ) to turn on.

If none of the LEDs turn on, make sure that the Power On/Off button is in the ON position (pushed in).



#### Step 5:

Connect your computer to the router (  ).

Use another Ethernet cable to establish a wired connection as shown in this diagram.

Optionally, connect wirelessly by using the preset wireless security settings, located on the bottom label.

#### Step 6:

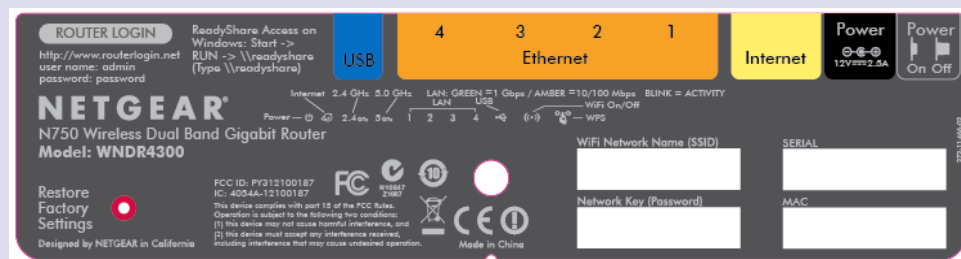
Open a browser.

If the web page does not display, close and re-open the browser, then enter <http://www.routerlogin.net> in the address bar, or check the "Troubleshooting" section on the back of this installation guide.

## Preset Wireless Security

This product has a unique WiFi network name (SSID) and network key (password). The default SSID and network key (password) are uniquely generated for every device (like a serial number), to protect and maximize your wireless security. This information is located on the label on the bottom of the product.

NETGEAR recommends that you do not change the preset WiFi network name (SSID) and network key (password). If you do change the settings, the information on the bottom of the product does not apply.



Find the preset wireless settings on your router and record them here:

WiFi network name (SSID) \_\_\_\_\_

Network key (password) \_\_\_\_\_

If you change the preset wireless settings, record them here:

Wireless network name (SSID) \_\_\_\_\_

Network key (password) \_\_\_\_\_

If necessary to retrieve or update your password, type <http://www.routerlogin.net> in a Web browser, and log in using the default user name (**admin**) and password (**password**).

Select **Wireless Settings** to locate your wireless password.



201-15245-03



JULY 2012



This symbol was placed in accordance with the European Union Directive 2002/96 on the Waste Electrical and Electronic Equipment (the WEEE Directive). If disposed of within the European Union, this product should be treated and recycled in accordance with the laws of your jurisdiction implementing the WEEE Directive.

## Connect Wireless Devices to Your Router

Choose either the manual or Wi-Fi Protected Setup (WPS) method to add wireless computers, and other devices to your wireless network.

### Manual Method


1. Open the software utility that manages your wireless connections on the wireless device that you want to connect to your router (iPhone, laptop, computer, gaming device). This utility scans for all wireless networks in your area.
2. Look for the preset NETGEAR wireless network name (SSID), and select it. The preset WiFi network name (SSID) is located on the product label on the bottom of the router.

**Note:** If you changed the name of your network during the setup process, look for that network name.

3. Enter the preset password (or your custom password if you changed it), and click **Connect**.
4. Repeat steps 1–3 to add other wireless devices.

### WPS Method

If your wireless device supports WPS (Wi-Fi Protected Setup)—NETGEAR calls this method Push 'N' Connect—you might be prompted to press the **WPS** button on the router instead of entering a password. If you are prompted to press the **WPS** button:

1. Press the **WPS** button  on the router.
2. Within 2 minutes, press the **WPS** button on the client device, or follow the WPS instructions that came with your wireless device to complete the WPS process. The device will then be connected to your router.
3. Repeat this process to add other WPS wireless devices.

**Note:** WPS does not support WEP security. If you try to connect a WEP client to your network using WPS, it does not work.

## Troubleshooting

The browser cannot display the Web page.

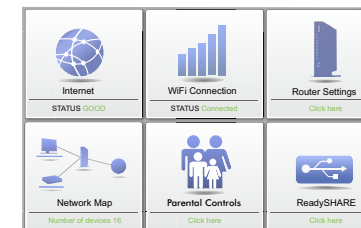
- Make sure that the PC is connected to one of the four LAN Ethernet ports, or wirelessly to the router.
- Make sure that the router has full power and that the Wireless LED is lit.
- Close and re-open the browser to make sure that the browser does not cache the previous page.
- Browse to <http://www.routerlogin.net>.
- If the PC is set to a static or fixed IP address (this is uncommon), change it to obtain an IP address automatically from the router.

After installing your device, locate the serial number on the label of your product and use it to register your product at <https://my.netgear.com>. You must register your product before you can use NETGEAR telephone support. NETGEAR recommends registering your product through the NETGEAR web site. Also go to <http://support.netgear.com> for product updates, additional documentation, and support.

For the free Live Parental Controls centralized Internet site filtering software for your router, download from: <http://www.netgear.com/lpc>.

For additional features, including Traffic Metering, ReadySHARE, Guest Access, and Time Machine, log in to your router at: <http://www.routerlogin.net>.

For complete DoC, go to the NETGEAR EU Declarations of Conformity website at: [http://support.netgear.com/app/answers/detail/a\\_id/11621](http://support.netgear.com/app/answers/detail/a_id/11621).



### Download the free Desktop NETGEAR genie

Automatically fix common network problems and easily manage your home network connections.

<http://www.NETGEAR.com/genie>

NETGEAR, the NETGEAR logo, and Connect with Innovation are trademarks and/or registered trademarks of NETGEAR, Inc. and/or its subsidiaries in the United States and/or other countries. Information is subject to change without notice. Other brand and product names are trademarks or registered trademarks of their respective holders. © 2012 by NETGEAR, Inc. All rights reserved.