



Wireless Network
Broadband Router Turbo-G

WL-153 WPA-PSK Encryption

Encryption manual

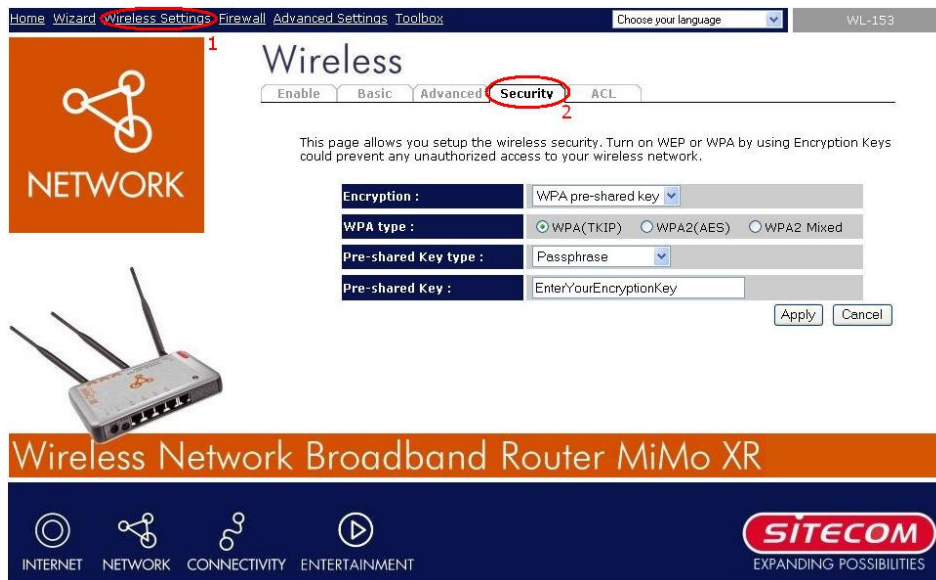
Appendix A Setting up WPA-PSK Encryption

This section shows you how to install WPA-PSK encryption on your router and pc.

A1. Setting up WPA-PSK encryption on your router

To setup WPA encryption on your router, please follow these steps:

1. Open the router interface (<http://192.168.0.1>) in your web browser (e.g. Internet explorer or Mozilla Firefox).
2. Log in with username 'admin', and password 'admin'.
3. Go to **Wireless Settings > Security**



Home Wizard **Wireless Settings** Firewall Advanced Settings Toolbox Choose your language WL-153

Wireless

Enable Basic Advanced **Security** ACL

This page allows you setup the wireless security. Turn on WEP or WPA by using Encryption Keys could prevent any unauthorized access to your wireless network.

Encryption :	WPA pre-shared key
WPA type :	<input checked="" type="radio"/> WPA(TKIP) <input type="radio"/> WPA2(AES) <input type="radio"/> WPA2 Mixed
Pre-shared Key type :	Passphrase
Pre-shared Key :	EnterYourEncryptionKey

Apply Cancel

Wireless Network Broadband Router MiMo XR

INTERNET NETWORK CONNECTIVITY ENTERTAINMENT

SITECOM
EXPANDING POSSIBILITIES

4. For **Data Encryption** select '**WPA pre-shared key**'. Select '**WPA (TKIP)**' as **WPA Type**.
5. Choose your encryption **key**, and enter it on the webpage. Please use between 8 and 63 characters.
6. Write down the encryption type, and the WPA key you've chosen.
7. Click **Apply**.

NOTE: At this moment, WPA encryption is enabled and all Wireless connections are lost until the same settings are used on the Wireless computers. Please follow chapter A2 to configure your computer.

A2. Setting up WPA-PSK encryption on your computer

On your computer you need to use the same settings as used in your router. It's possible to configure your computer using the Windows configuration utility for Service Pack 2, or the Sitecom Wireless utility depending on the Wireless Network Card in your computer. If your computer uses the Windows configuration utility for Service Pack 1, please upgrade your Windows to Service Pack 2. Windows XP Service Pack 1 doesn't support WPA-PSK encryption.

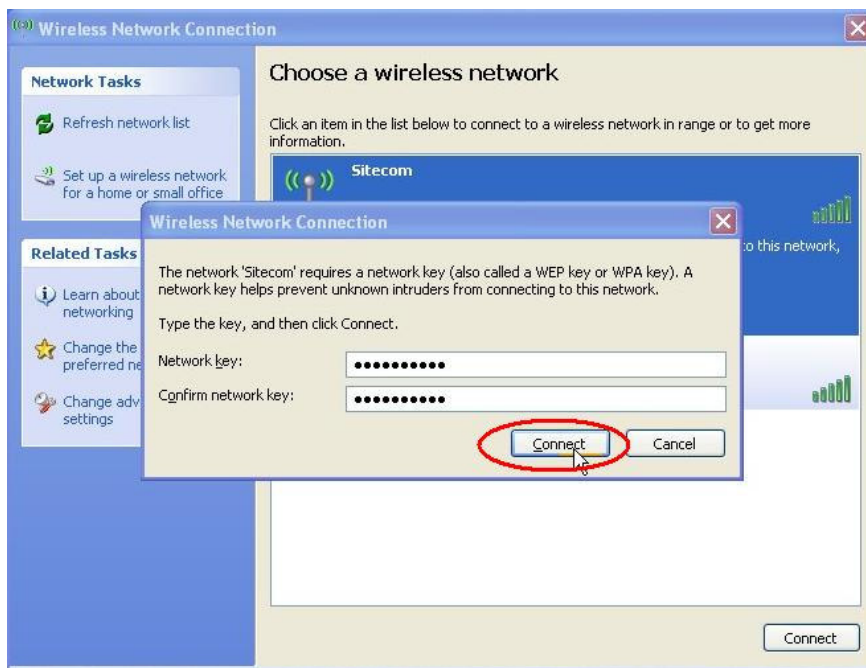
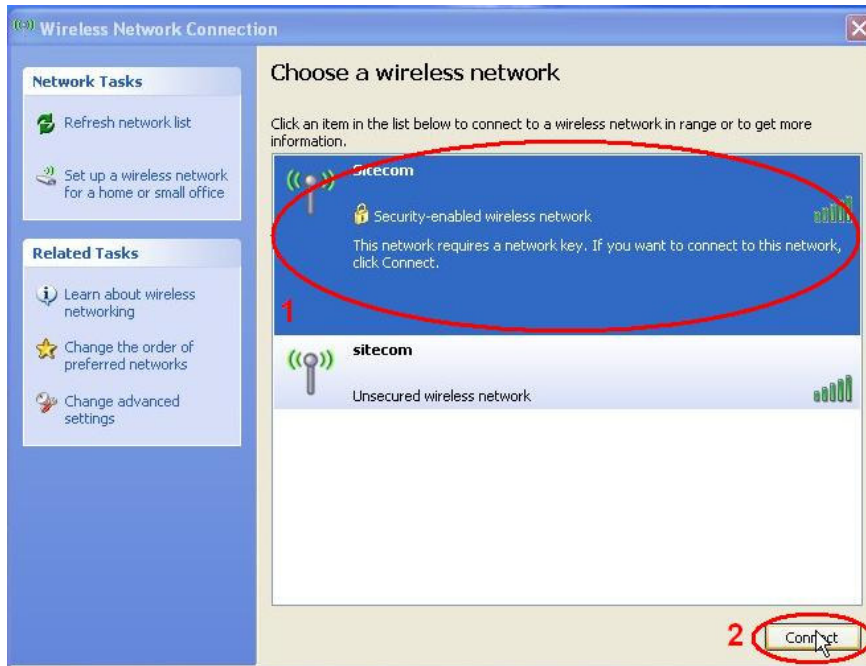
If you're using other software to configure your wireless connection, please read the manual of your wireless network card, or contact the manufacturer for more information about the configuration of your wireless connection.

A2.1 Setting up WEP using Wireless Zero Config (WinXP/SP2)

1. Right mouse click on the icon in your Taskbar, and select **View available wireless networks**



2. Click on the name of your network, and click **Connect**



3. Enter your WPA-encryption key in the **Network Key** textbox
4. Enter the same code in the **Confirm Network Key** textbox

Note: The network key should be exactly the same as in your router.

5. Click **Connect**.

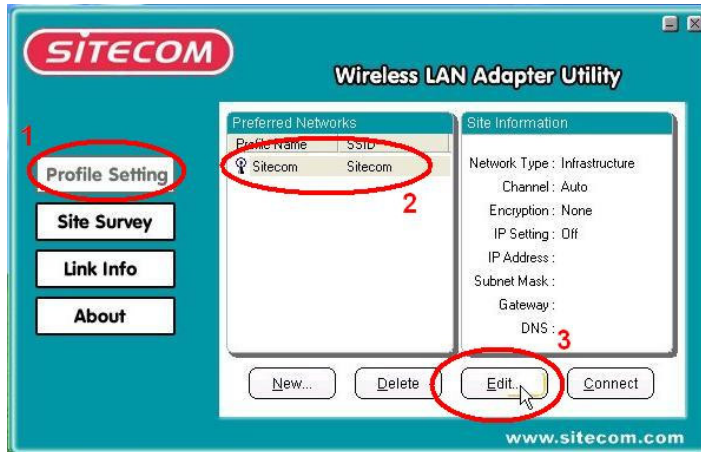
Windows should now use your encryption settings and reconnect to your network.

B2.3 Setting up WPA using the Sitecom Wireless Utility

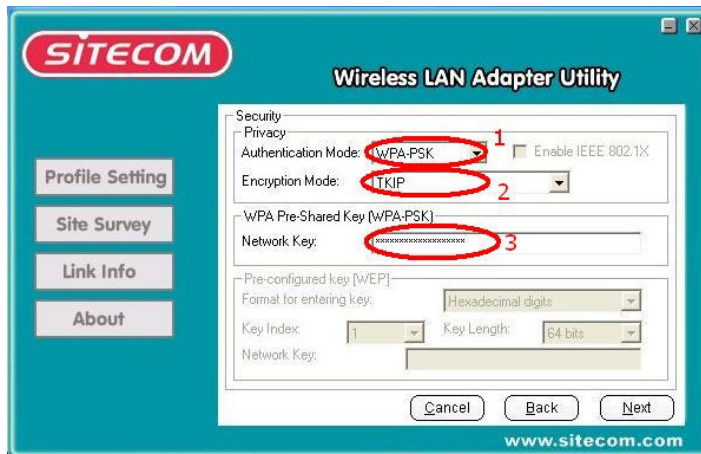
1. Double click on the icon of the Sitecom Wireless Utility



2. Click on **Profile Settings**, select your network profile, and click **Edit**



3. Click **Next** three times



4. Set '**Authentication Mode**' to '**WPA-PSK**' (1), and set '**Encryption Mode**' to '**TKIP**' (2).
5. Enter your WEP-encryption key in the **Network Key** (3) textbox
6. Click **Next** one or three times (depending on your configuration), then click **Finish**, and then click **Connect**.

The Sitecom Wireless Utility should now use your encryption settings and reconnect to your network.