

TEW-231BRP

**Cable/DSL 4-Port Wireless Firewall Router
Quick Installation Guide**

**Guide d'installation rapide du
Routeur sans fil câble/DSL à 4 ports avec pare-feu**

**Anleitung zur Schnellinstallation des
DSL/Kabel 4-Port Wireless Firewall Router**

**Guía de Instalación Rápida
Enrutador cortafuegos inalámbrico Cable/DSL de 4 puertos**

Version 05.24.04



TRENDnet[®]
TRENDware, USA
What's Next in Networking

Table of Contents

English	1
1. Prepare for Installation	1
2. Install Hardware	3
3. Configure the computer's TCP/IP Settings	4
4. Configure the Router	8
Troubleshooting	17

English QIG

1. Prepare for Installation

Thank you for purchasing the TEW-231BRP. This router will allow you to share your internet connection with multiple users while its advanced security features protect your network from intruders and hackers.

This guide will help you set up and configure your wireless router. Following the installation instructions should be quick and easy. If you run into problems, please refer to the Troubleshooting section (on page 17) or the more detailed installation procedures on the User's Guide CD-ROM. If you need further technical support, please visit www.TRENDNET.com or call by phone.

Verify Package Contents

Please make sure you have everything in the box:



TEW-231BRP



User's Guide CD-ROM



Quick Installation Guide



Power Adapter

Verify Equipment

Before installing the router, you should have:

1. A Cable/DSL Modem with an Ethernet Port Set-up.
2. An Activated Broadband Internet Account.
3. A Web Browser such as Internet Explorer (5.0 or higher) or Netscape Navigator (4.7 or higher).
4. An RJ-45 Network Cable for each computer connected to the router.
5. A computer with TCP/IP Protocol installed.
6. Computers(s) with Client for Microsoft Networks Service installed.

Collect Internet Service Provider (ISP) Information

During the installation of your Wireless Router, the Quick Setup application will ask you to specify your ISP connection type. Therefore, please verify your Cable or DSL Internet broadband connection type with your ISP and ensure you have all the information for one of the following connection types:

Dynamic IP Cable Connection

Nothing required. IP address will automatically be assigned by the ISP.

Static or Fixed IP Cable Connection

Internet IP Address: _____ (eg. 215.24.24.129)

Subnet Mask: _____

Gateway IP Address: _____

Primary DNS: _____

Secondary DNS: _____

PPPoE DSL Connection

Login Name: _____

Password: _____

PPTP DSL Connection

Login Name: _____

Password: _____

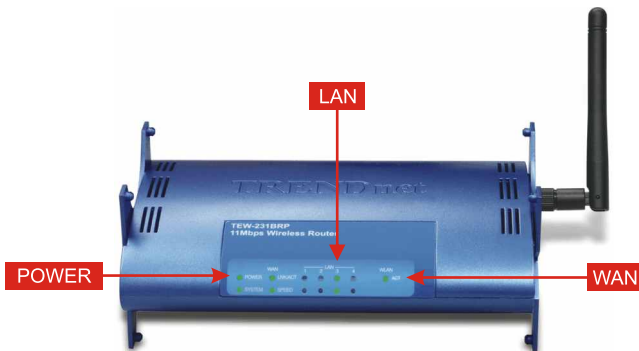
2. Install Hardware

1. Connect one RJ-45 network cable from the Modem's Ethernet port to the WAN port on the Router.
2. Connect a different RJ-45 network cable from one of the Router's LAN ports to your computer's network port.
3. Attach the two included antennas to the connectors on the back of the router.
4. Power on your Cable/DSL modem.
5. Power on your router.
6. Power on your computer.



Verify Hardware Installation

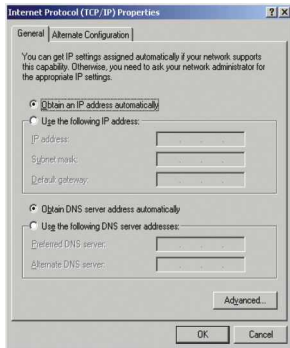
Check to make sure the following router front panel lights are on: Power, WAN, and one of LAN port LED for each wired computer connected to the router.



3. Configure the computer's TCP/IP Settings

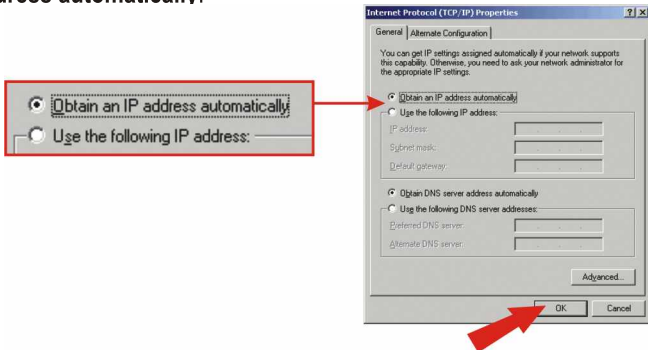
Windows 2000/XP

1. Click **Start**; click **Settings** and click on **Control Panel**
2. Double-Click the **Network Connections** icon.
3. Right-Click on the **Local Area Connection** icon, and then click on **Properties**. The Local Area Connection Properties box will appear.
4. Under the **General Configuration** Tab, locate and select **TCP/IP**, then click **Properties**. The Internet Protocol (TCP/IP) Properties box will appear.

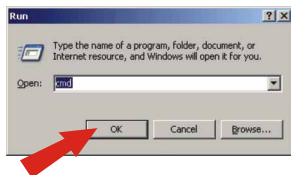


NOTE: If you have a Fixed IP address connection, write down the existing IP addresses from the following sections before you make any changes.

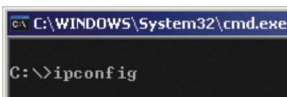
5. Click on **Obtain an IP address automatically** and **Obtain DNS Server address automatically**.



6. Click **OK**.
7. Click **Close** on the Local Area Connection Properties box.
8. Click **Start**; click on **Run**. Then type **cmd** and click **OK**.

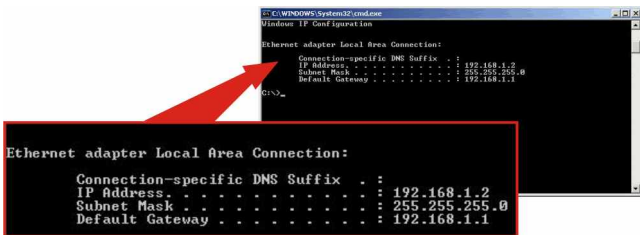


9. The Command Prompt window will appear. Type **ipconfig** at the C:\ prompt and press the **Enter** key.



10. If your IP Configuration reads as follows, your computer is successfully connected to the router:

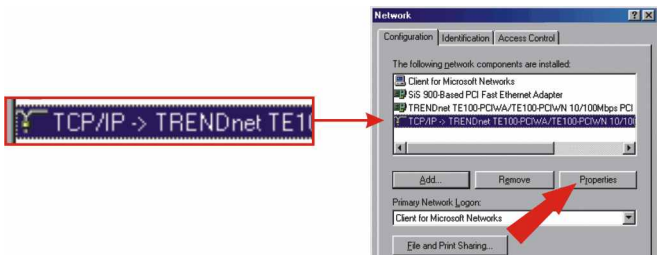
IP Address: 192.168.1.x (x= any number from 2~255)
Subnet Mask: 255.255.255.0
Default Gateway: 192.168.1.1



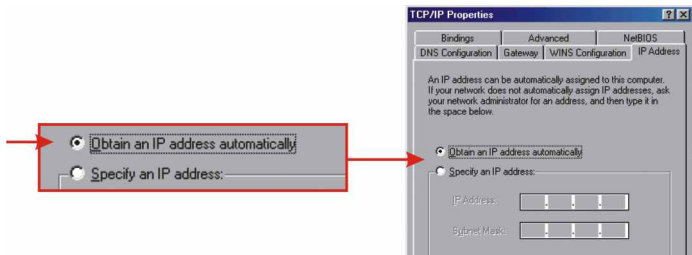
NOTE: If your IP Configuration does not match the values above, please restart your computer and retry the steps in this section.

Windows 95/98/98SE/ME

1. Find the **Start** Button located on Desktop.
2. Click **Start**; click **Settings** and then click on **Control Panel**.
3. Double-Click the Network icon and the Network Properties box will appear.
4. Under the **Configuration** Tab, locate and select **TCP/IP** with the corresponding network card (such as TRENDnet TE100-PCIWN 10/100Mbps Network Adapter), then click on the **Properties** button.



5. Under the IP Address Tab, click on the **Obtain an IP address automatically** option.



6. Click **OK** on the TCP/IP Properties box.
7. Click **OK** on the Network Box.
8. At this point, the installation may require files from your Windows CD-ROM. If this happens, insert your Windows 98 CD-ROM into your CD-ROM drive and select **CD-ROM drive** to load the files.

9. After the files load, the **System Settings Change** will appear, click **Yes** to reboot your system. This will update your computer with the new settings.



NOTE: If the message does not appear, you need to manually restart your computer.

10. After your system reboots, click **Start** and click on **Run**. Then type **wiipcfg** in the field and then click **OK**.
11. The IP configuration box will appear. Choose your network adapter from the dropdown box and your computer's current IP address information will show in the box.



12. If your IP Address reads as follows, your computer is successfully connected to the router:
- IP Address: 192.168.1.x (x= any number from 2~255)
Subnet Mask: 255.255.255.0
Default Gateway: 192.168.1.1

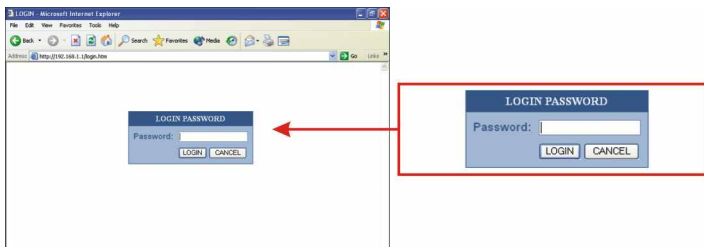
NOTE: If your IP configuration does not match the values above, please restart your computer and retry the steps in this section.

4. Configure the Router

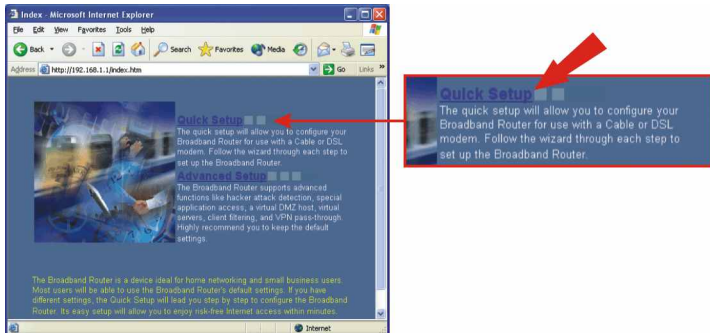
The following section will help you configure your router to connect to the Internet. The setup differs and is dependent on the type of Internet connection you have. If you are not sure what type of connection you have, please contact your ISP to obtain the required information, which is listed in the Prepare for Installation section at the beginning of this Quick Installation Guide.

1. Open your web browser and type **http://192.168.1.1** into the Address box and press the **Enter** key.
2. The login screen will appear; click **LOGIN** to access the **Quick Setup**.

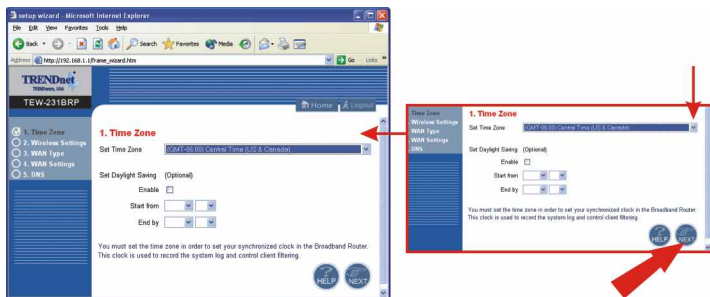
NOTE: By default, no password has been set on the wireless router. To reset the password on the wireless router, please refer to the User's Guide in the CD-ROM.



3. Click on **Quick Setup** to configure your Wireless Router for Broadband Internet access.



- Click on the dropdown menu to select the appropriate time zone. If your region runs on Daylight Savings Time, you should enable the “Set Daylight Saving” option and input the dates and times when Daylight Savings Time goes into and out-of effect. Then click **Next**.

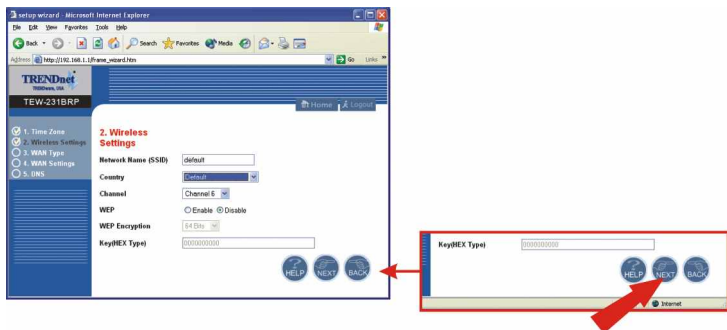


- Click on the dropdown menu to select your country. (Note: “USA” by default).

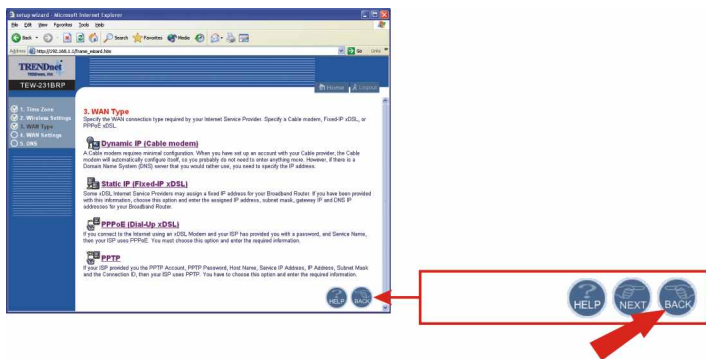
NOTE: After selecting your country, a WARNING pop-up will appear to inform you that choosing an incorrect country may be in violation of applicable laws. Click **OK**.



6. Your wireless configuration is complete. Click **Next**.

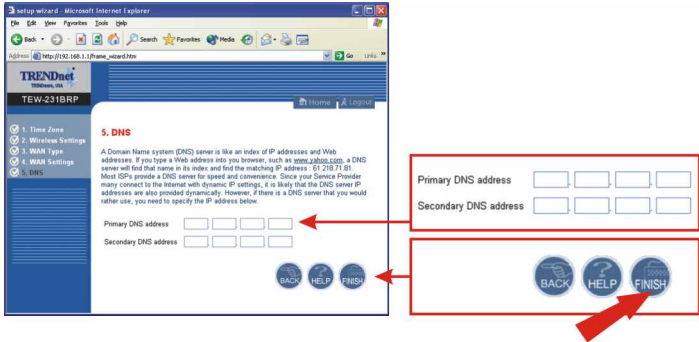


7. Select the appropriate WAN connection type by clicking on Dynamic IP, Static IP, PPPoE, or PPTP.

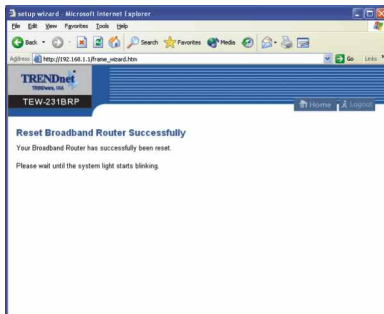


Dynamic IP

1. Specify the Host Name (if any) and Clone the MAC Address (if required by your ISP). Click **Next**.
2. Specify Primary and Secondary DNS addresses if you wish to use DNS addresses other than your ISP-provided DNS addresses. Click **Finish**.



3. To verify your Internet connection, type `http://www.TRENDNET.com` in your browser's address bar, and hit **Enter**. If the website appears, your router is configured properly.



Static or Fixed IP Cable Connection

1. Enter the IP Address, Subnet Mask, and ISP Gateway Address provided by your ISP. Click **Next**.

4. WAN Settings

Static IP (Fixed-IP xDSL)

IP address assigned by your ISP: 192 168 1 20

Subnet Mask: 255 255 255 0

ISP Gateway Address: 192 168 1 254

Enter the IP address, subnet mask, and gateway provided to you by your ISP in the appropriate fields.

BACK HELP NEXT

IP address assigned by your ISP	192	168	1	20
Subnet Mask	255	255	255	0
ISP Gateway Address	192	168	1	254

2. Specify Primary and Secondary DNS addresses if you wish to use DNS addresses other than your ISP-provided DNS addresses. Click **Finish**.

5. DNS

A Domain Name system (DNS) server is like an index of IP addresses and Web addresses. If you type a Web address into your browser, such as `www.yahoo.com`, a DNS server will find that name in its index and find the matching IP address (i.e. 203.71.1).

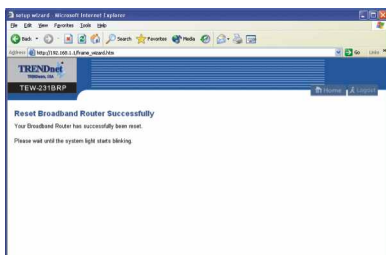
Most ISPs provide a DNS server for speed and convenience. Since your Service Provider may not connect to the internet with dynamic IP settings, it is likely that the DNS server IP addresses are also provided dynamically. However, if there is a DNS server that you would rather use, you need to specify the IP address below.

Primary DNS address: 192 168 0 254

Secondary DNS address: 192 168 0 148

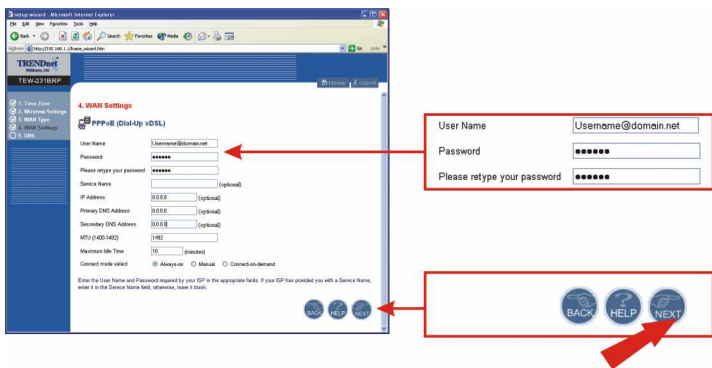
BACK HELP FINISH

- To verify your Internet connection, type <http://www.TRENDNET.com> in your browser's address bar, and hit **Enter**. If the website appears, your router is configured properly.

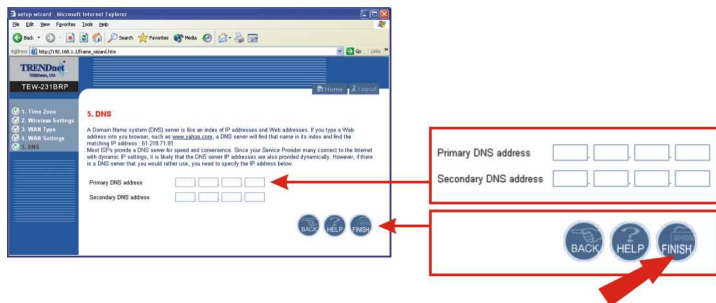


PPPoE

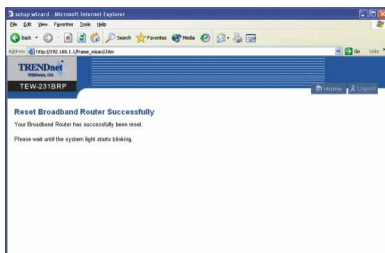
- Enter your PPPoE User Name and Password, and retype your password. Then, click **Next**.



2. Specify Primary and Secondary DNS addresses if you wish to use DNS addresses other than your ISP-provided DNS addresses. Click **Finish**.

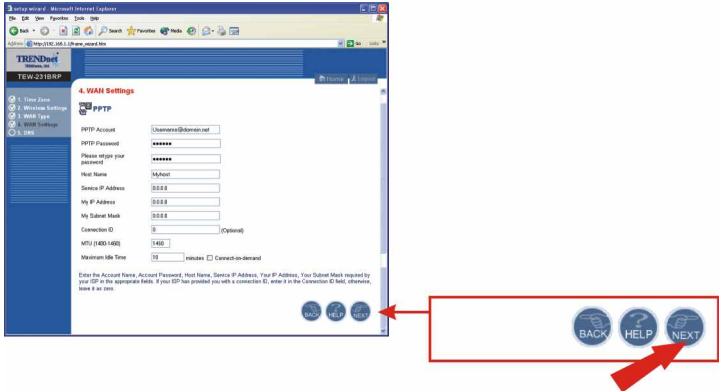


3. To verify your Internet connection, type <http://www.TRENDNET.com> in your browser's address bar, and hit **Enter**. If the website appears, your router is configured properly.

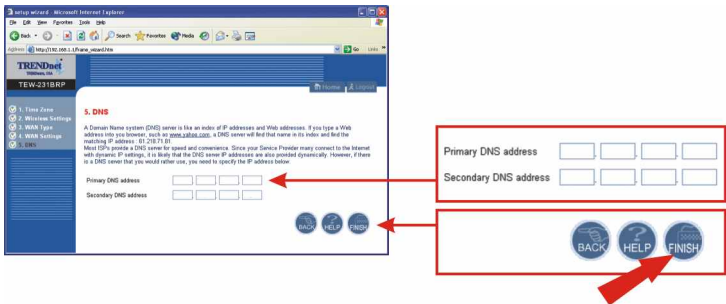


PPTP

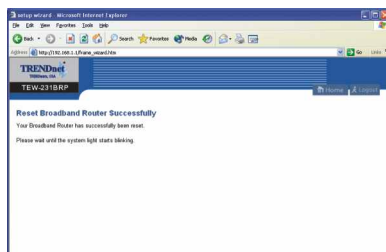
1. Enter your PPTP User Name and Password, and retype your password. Then, click **Next**.



2. Specify Primary and Secondary DNS addresses if you wish to use DNS addresses other than your ISP-provided DNS addresses. Click **Finish**.



- To verify your Internet connection, type <http://www.TRENDNET.com> in your browser's address bar, and hit **Enter**. If the website appears, your router is configured properly.



For help with advanced features such as URL Filtering, Access Control and Virtual Server settings, please refer to your User's Guide CD-ROM.

Q1. I specified the IP address, 192.168.0.1 in my internet browser, but an error message says "The page cannot be displayed". How can I get into the TEW-231BRP web configuration page?

A1. Please check your hardware and TCP/IP settings again by following the instructions in section 1-3, make sure the Power, WAN, and on the LAN lights on the Router's front panel are on, and verify that the TCP/IP configuration is correct. Then try accessing 192.168.0.1 again using your web browser.

Q2. I am not sure what type of Internet Account Type I have for my Cable/DSL connection, How do I find out?

A2. You can simply contact your Internet Service Provider's (ISP) Customer Service or Technical Support Department for the correct information.

Q3. I set up my internet connection type and saved it, but I still cannot connect to the Internet. Why?

A3. Option 1: Go to the Status section of the configuration page, and click on the Connection Detail button. Click on the Release/Renew button to allow the router to refresh the connection with your ISP. Then try browsing a website such as <http://www.trendnet.com> again with your Internet browser.
Option 2: Please power down all the equipment including Cable/DSL modem, Router and your PC. Power on the Cable/DSL modem and wait 60 seconds, then power on the router followed by your PC. This simple power cycle normally helps the router to find your Internet connection. Then try browsing a website such as <http://www.trendnet.com> with your web browser.

Note: For more detailed information about TEW-231BRP's configuration and advanced settings, please refer to the User's Guide CD-ROM.

If you still encounter problems setting up the router, we can help. Please have your Internet account information ready, (ISP, Account Type) and contact us using the information below.

Contact Technical Support

Telephone: +1-310-626-6252

Fax: +1-310-626-6267

Website: www.TRENDNET.com

E-mail: support@trendware.com

Technical Support Hours

7:00AM ~ 6:00PM, Monday through Friday

Pacific Standard Time (except holidays)

TRENDnet[®]

TRENDware, USA

What's Next in Networking

Product Warranty Registration

Please take a moment to register your product online.
Go to TRENDware's website at <http://www.TRENDNET.com>

TRENDware International, Inc.
3135 Kashiwa Street
Torrance, CA 90505

<http://www.TRENDNET.com>