



Quick Installation Guide



TEW-435BRM

Table of Contents

English	1
1. Before You Start	1
2. Install Hardware	3
3. Configuration The Modem	4
Troubleshooting	7

1. Before You Start



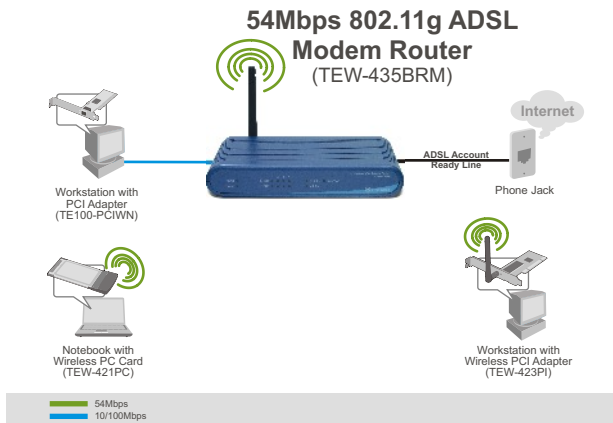
Package Content

- TEW-435BRM
- Quick Installation Guide
- User's Guide CD-ROM
- 1 x 2dBi Detachable Antenna
- 1 x RJ-45 Ethernet Cable (Yellow)
- 1 x RJ-11 Telephone Cable (Gray)
- Mounting Stand
- Power Adapter

Installation Requirements

- A working DSL Internet Connection
- A computer with a wired or wireless network adapter properly installed.
- Web Browser: Internet Explorer (5.0 or higher) or Netscape Navigator (4.7 or higher)

Application



Collect Internet Service Provider (ISP) Information

During the installation of your Wireless ADSL Modem Router, the Setup Wizard will automatically detect your ISP connection type. If the router cannot detect your ISP connection type, you can manually specify the connection type.

Please verify your DSL Internet broadband connection type with your ISP and ensure you have all the information for one of the following connection types:

A. Dynamic IP connection

ADSL Modem parameters (VPI or VCI), if it cannot be detected automatically. ISP may require you to use a particular Hostname or Domain name.

B. Static or Fixed IP connection

Internet IP Address: _____ (eg. 215.24.24.129)

Subnet Mask: _____

Gateway IP Address: _____

Primary DNS: _____

Secondary: _____

ADSL Modem Parameters (VPI or VCI), if it cannot be detected automatically.

C. PPPoE or PPPoA Dynamic IP connection

Login User Name: _____

Password: _____

ADSL Modem Parameters (VPI or VCI), if it cannot be detected automatically.

D. IPoA Static or Fixed (IP over ATM) connection

Internet IP Address: _____ (eg. 215.24.24.129)

Subnet Mask: _____

Gateway IP Address: _____

Primary DNS: _____

Secondary: _____

ADSL Modem Parameters (VPI or VCI), if it cannot be detected automatically.

2. Hardware Installation

1. Attach the mounting stand to the side of the unit.

2. Connect one end of the yellow RJ-45 cable to one of the TEW-435BRM's LAN ports. Connect the other end of cable to the computer's Ethernet port. Then connect the 2dBi detachable antenna.

3. Connect one end of the gray RJ-11 cable to the TEW-435BRM's ADSL port. Connect the other end of the cable to the phone jack.

4. Connect the AC Power Adapter to the TEW-435BRM and then to a power outlet.

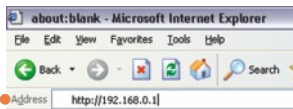
5. Verify that the following panel lights are on: **Power, LAN, and WLAN**.



3. Configure the Modem

Note: It is recommended that you configure the Modem from a wired computer.

1. Open your web browser, type **http://192.168.0.1** in the Address bar, and press **Enter**.



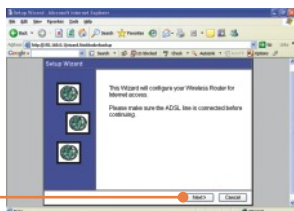
2. Enter User name and Password, and then click **OK**. By default, User name: **admin**
Password: **password**



3. Click **Setup Wizard**.

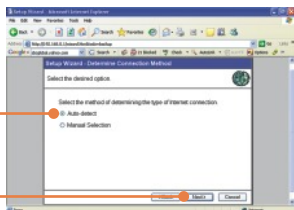


4. Click **Next**.

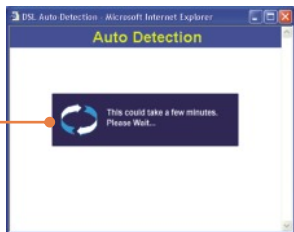


Note: In the example, the DSL connection is PPPoE.

5. Select **Auto-detect**, and then click **Next**.

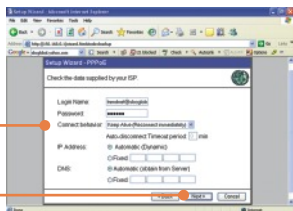


6. Wait for the Auto Detection process to complete.



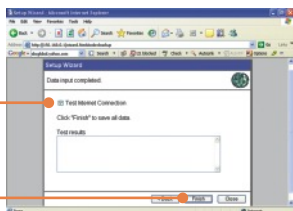
Note: If the Setup Wizard could not automatically detect your Internet connection, select **Manual Selection** and input the information using the information provided by your ISP.

7. Configure the settings based on information provided by your ISP. Then click **Next**.



Note: For other connection methods, follow the on screen instructions after the Auto Detection.

8. Check **Test Internet Connection**, and then click **Finish**.



9. Verify that the ADSL LED is lit and then click **Close**.

Your installation is now complete.

For detailed information regarding the TEW-435BRM's configuration and advanced settings, please refer to the Troubleshooting section, User's Guide CD-ROM, or TRENDnet's website at <http://www.trendnet.com>.

Q1: I typed `http://192.168.0.1` in my Internet Browser's Address Bar, but an error message says “The page cannot be displayed.” How can I get into the TEW-435BRM's web configuration page?

A1: First, check your hardware settings again by following the instructions in Section 2. Second, make sure the LAN and WLAN lights are lit. Third, make sure your TCP/IP settings are set to **Obtain an IP address automatically** (see the steps below).

1. Go into the **Control Panel** and double-click the **Network Connections** icon, right-click the **Local Area Connection** icon and then click **Properties**.



2. Click **Internet Protocol (TCP/IP)** and then click **Properties**. Then click on **Obtain an IP address automatically**.



Fourth, press on the factory reset button for 15 seconds.

Q2: The Modem does not auto-detect my DSL connection. What should I do?

A2: First, verify that your DSL account is activated. Second, make sure all the cables are properly connected (see Section 2). Third, in Section 3, select manual selection in the Setup Wizard and configure the Modem based on information provided by your ISP.

Q3: All the settings are correct, but I can not make a wireless connection to the Modem. What should I do?

A3: First, double check that the WLAN light on the Modem is lit. Second, power cycle the Modem. Unplug the power to the Modem. Wait 15 seconds, then plug the power back in. Third, log into your Modem (see Section 3). Click on Wireless and make sure **Enable Access Point** is checked. Fourth, contact the manufacturer of your wireless network adapter. Make sure the wireless network adapter is configured with the proper SSID. The preset SSID of the Access Point is **default**.

If you still encounter problems or have any questions regarding the **TEW-435BRM**, please contact TRENDnet's Technical Support Department.

Certifications

This equipment has been tested and found to comply with FCC and CE Rules.

Operation is subject to the following two conditions:

- (1) This device may not cause harmful interference.
- (2) This device must accept any interference received.

Including interference that may cause undesired operation.



Waste electrical and electronic products must not be disposed of with household waste. Please recycle where facilities exist. Check with your Local Authority or Retailer for recycling advice.



NOTE: THE MANUFACTURER IS NOT RESPONSIBLE FOR ANY RADIO OR TV INTERFERENCE CAUSED BY UNAUTHORIZED MODIFICATIONS TO THIS EQUIPMENT. SUCH MODIFICATIONS COULD VOID THE USER'S AUTHORITY TO OPERATE THE EQUIPMENT.



TRENDnet Technical Support

US • Canada

Toll Free Telephone: 1(866) 845-3673

24/7 Tech Support



Europe (Germany • France • Italy • Spain • Switzerland • UK)

Toll Free Telephone: +00800 60 76 76 67

English/Espanol - 24/7

Francais/Deutsch - 11 am-8pm, Monday - Friday MET

Worldwide

Telephone: +(31) (0) 20 504 05 35

English/Espanol - 24/7

Francais/Deutsch - 11 am-8pm, Monday - Friday MET

Product Warranty Registration

Please take a moment to register your product online.

Go to TRENDnet's website at <http://www.trendnet.com>

TRENDnet[®]
3135 Kashiwa Street
Torrance, CA 90505
USA