

# TEW-450APB

**Super G Access Point Quick Installation Guide**

**Point d'accès Super G Guide d'installation rapide**

**Super G Access Point Kurzanleitung zur Installation**

**Punto de Acceso Súper G Guía de instalación rápida**

**Точка доступа Super G Руководство по быстрой установке**

**Version 06.28.2005**



**TRENDnet**<sup>®</sup>  
TRENDware, USA  
**What's Next in Networking**

# Table of Contents

English .....	1
1. Prepare for Installation .....	1
2. Install Hardware .....	2
3. Configure TCP/IP Settings .....	3
4. Configure the Access Point .....	5
Troubleshooting.....	10

# English QIG

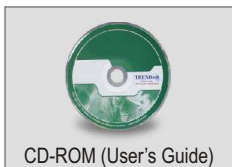
## 1. Prepare for Installation

Thank you for purchasing TRENDnet's TEW-450APB Super G Access Point

This guide will help you set-up your Access Point quickly and easily. Just follow the step-by-step instructions below, and enjoy the benefits of accessing the Internet without ever being tied down to wires! If you run into problems, please refer to the Troubleshooting section. If you need further technical support, please visit [www.TRENDNET.com](http://www.TRENDNET.com) or call technical support by phone.

### Verify Package Contents

Please make sure you have everything in the box:



### Verify Equipment

Before setting up the Access Point, you should have:

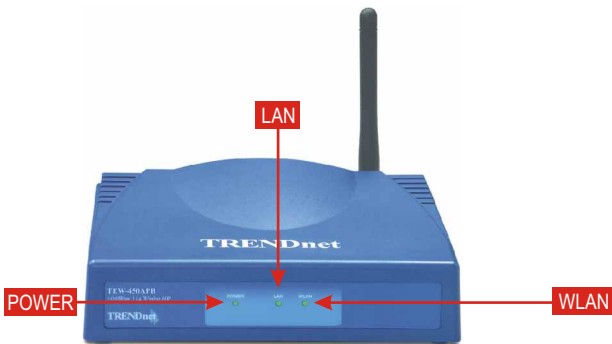
1. A Computer with a Wired (RJ-45) or Wireless network card.
2. TCP/IP protocol installed on the Computer.
3. A Web Browser such as Internet Explorer (5.0 or higher) or Netscape Navigator (4.7 or higher).
4. A Hub or Switch connecting your existing wired network.
5. An RJ-45 Network Cable for connecting the Access Point to your network Switch.

## 2. Install Hardware

1. Locate an optimum location for the Access Point. The best place for the Access Point is usually at the center of your wireless network.
2. Connect the RJ-45 network cable to the Access Point, then connect the other end of the network cable to a Switch or Hub. The Access Point is now connected to your 10/100Mbps network.
3. Connect the power adapter to the Access Point. Make sure you use the power adapter supplied with the Access Point; using a different power adapter may damage the unit.



**NOTE:** If you are using a wired computer to configure the Access Point, please connect this computer to the same Switch or Hub the TEW-450AP is connected to.



### Verify Hardware Installation

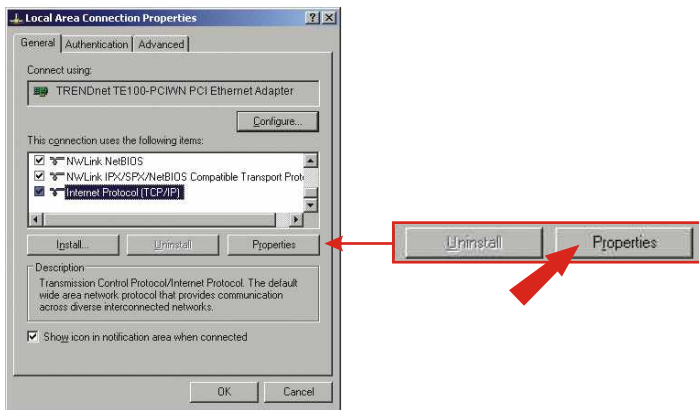
Make sure the front panel lights are on: Power, LAN, WLAN.

# 3. Configure TCP/IP Settings

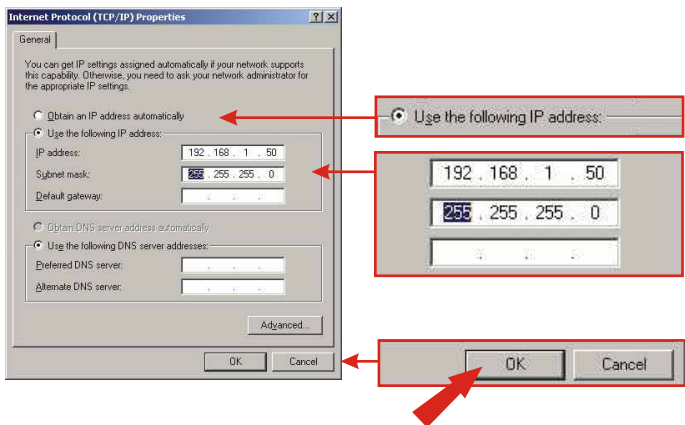
Before the Access Point can be accessed and configured, the computer's TCP/IP settings need to be changed. (That includes your wireless card's IP address, too.)

## Windows 2000/XP

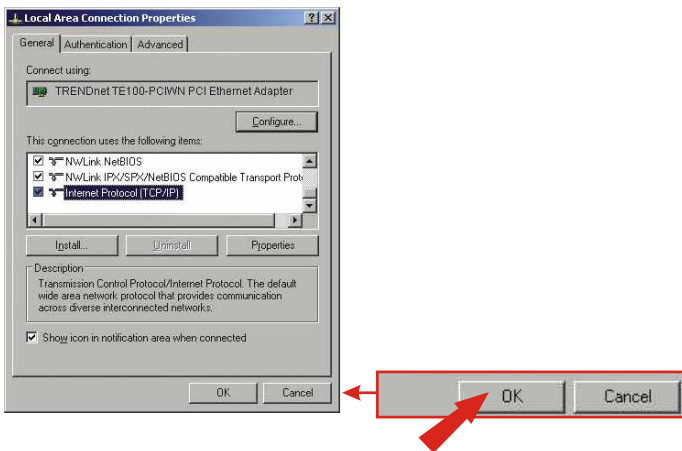
1. Find the **Start** button located on the Desktop.
2. Click **Start**, and click on **Control Panel**. For Windows 2000, click Start, highlight Settings, and click **Control Panel**.
3. Double-Click the **Network Connection** icon.
4. Right-Click on the **Local Area Connection** icon, then click on **Properties**. The Local Area Connection Properties box will appear.
5. Under the **General** tab, locate and select **Internet Protocol TCP/IP** and then click **Properties**. The Internet Protocol (TCP/IP) Properties box will appear.



6. Click on **Use the following IP address**. Enter 192.168.1.50 for IP address and 255.255.255.0 for Subnet, then click **OK**.



7. Click **OK**.



8. Your computer is now ready to access and configure the Access Point.

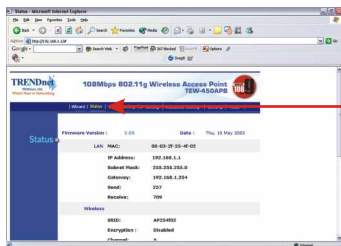
# 4. Configure the Access Point

## From a Wired Computer

1. Open a web browser (Internet Explorer or Netscape) and enter `http://192.168.1.1` at the address bar, then press the **Enter** key. Type **admin** for **username**, and type **admin** for your **password**. Click **OK**.



2. Click **Wizard**.



| **Wizard** | Status | Basic Setting

### 3. Click **Next**.

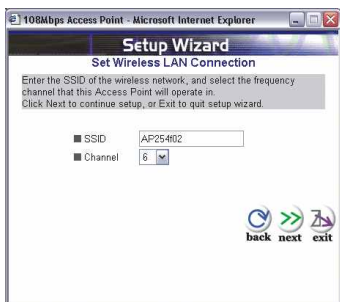


### 4. If you want to change the default password, type in a new password and click **Next**. Otherwise, click **Next**.

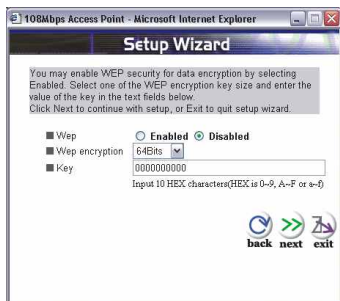




5. If you want to change the default SSID or channel, type in the appropriate information and click **Next**. Otherwise, click **Next**.



6. Click **Next**.



7. Click **Restart** and click **Close**.



**Congratulations!**  
Installation is now complete.

## **From a Wireless Computer**

(using TRENDnet's TEW-441PC as an example in this section)

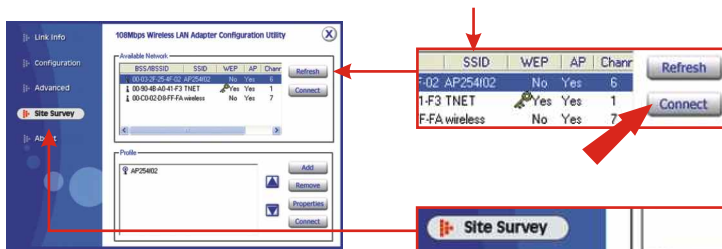
The default settings of the Access Point are:

SSID - AP254f02

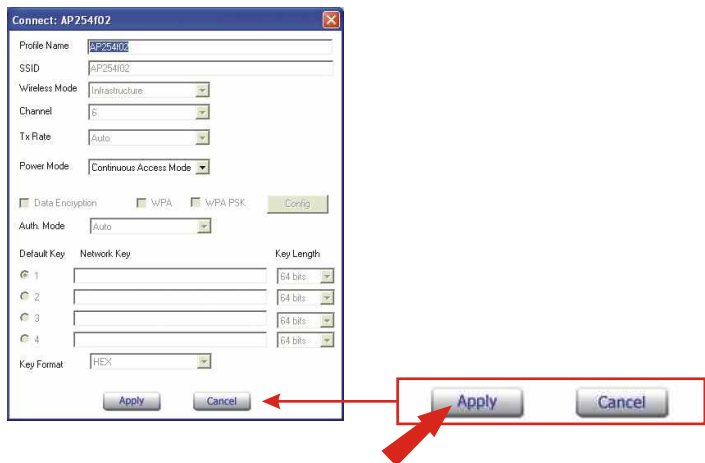
Channel - 6

8. On your wireless computer, open up your Wireless Utility Program.

9. Click **Site Survey**, select **AP254f02** or the SSID that you assigned the TEW-450APB, and click **Connect**. If you do not see the TEW-450APB's SSID, click **Refresh**.



10. Click **Apply**.



11. Go to the beginning of section 4. **Configure the Access Point** and follow steps 1-7.

# Troubleshooting

**Q1: I typed `http://192.168.1.1` in my Internet browser's address bar, but error message says "The page cannot be displayed". How can I get into the TEW-450APB's web configuration page?**

**A1:** Please check your hardware and TCP/IP settings again by following the instructions in sections 1~3. Make sure the Power, LAN, and WLAN LEDs are lit and the TCP/IP configurations are correct. Then try accessing `http://192.168.1.1` again.

**Q2: If my network's IP is different than the Access Point's range, what should I do?**

**A2:** You should still configure the access point first. After all the settings are applied, go to the Access Point's configuration page, click on TCP/IP settings and change the IP address for the Access Point to match your network's IP.

**Q3. After I successfully configured the Access Point to meet my network settings, I cannot connect to my network using wireless computers.**

**A3:** If you have a DHCP server in your network, you need to go into TCP/IP settings again and re-select "Obtain an IP automatically" for Windows 98/ME and "Obtain an IP Address automatically" for Windows 2000/XP to allow the PC to regain an IP address from your DHCP server.

**Q4. All the settings are set correctly, but I still can't use the Access Point, what should I do?**

**A4:** You can find additional information in the User's Guide. If you still have Problems, contact our Technical Support by email or phone.

## Certifications

This equipment has been tested and found to comply with FCC and CE Rules. Operation is subject to the following two conditions:

- (1) This device may not cause harmful interference.
- (2) This device must accept any interference received.  
Including interference that may cause undesired operation.



**NOTE:** THE MANUFACTURER IS NOT RESPONSIBLE FOR ANY RADIO OR TV INTERFERENCE CAUSED BY UNAUTHORIZED MODIFICATIONS TO THIS EQUIPMENT. SUCH MODIFICATIONS COULD VOID THE USER'S AUTHORITY TO OPERATE THE EQUIPMENT.



TRENDware, USA

**What's Next in Networking**

## Product Warranty Registration

Please take a moment to register your product online.  
Go to TRENDware's website at <http://www.TRENDNET.com>

## TRENDnet Technical Support

### US/Canada Support Center

**Contact**

**Telephone:** 1(310) 626-6252

**Fax:** 1(310) 626-6267

**Email:** [support@trendnet.com](mailto:support@trendnet.com)

**Tech Support Hours**

7:30am - 6:00pm Pacific Standard Time

Monday - Friday

### European Support Center

**Contact****Telephone**

Deutsch : +49 (0) 6331 / 268-460

Français : +49 (0) 6331 / 268-461

Español : +49 (0) 6331 / 268-462

English : +49 (0) 6331 / 268-463

Italiano : +49 (0) 6331 / 268-464

Dutch : +49 (0) 6331 / 268-465

**Fax:** +49 (0) 6331 / 268-466

**Tech Support Hours**

8:00am - 6:00pm Middle European Time

Monday - Friday

**TRENDware International, Inc.**

3135 Kashiwa Street. Torrance, CA 90505

**<http://www.TRENDNET.com>**