





Quick Installation Guide  

**TEW-455APBO**

# Table of Contents

<b>English</b>	<b>1</b>
1. Before You Start	1
2. Hardware Installation	3
3. Mounting	6
4. Connecting TRENDnet External Antenna	9
5. Configure the Access Point	10
<b>Troubleshooting</b>	<b>13</b>



## Package Contents

- TEW-455APBO
- CD-ROM (Utility & User's Guide)
- Quick Installation Guide
- AC Power Adapter (48V DC)
- Power Cord
- Mounting Kit
- Waterproof Kit\*
- Grounding wire

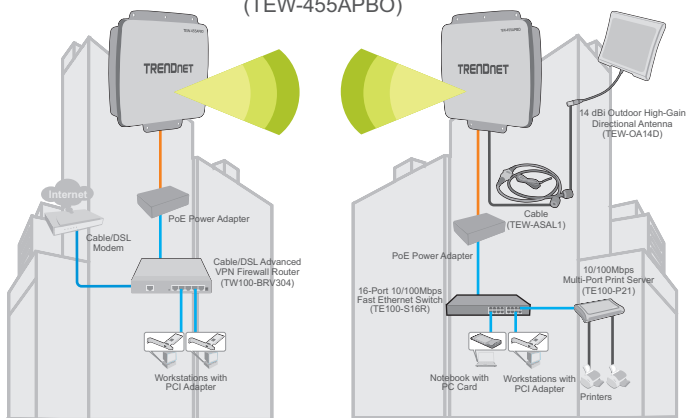
## System Requirements

- Web Browser: Internet Explorer (5.5 or higher)
- A computer with a network adapter properly installed
- A network Switch or Hub with an available network LAN port
- 2 x RJ-45 network cable
- RJ-45 Crimper
- Wire stripper
- Screwdriver
- Waterproof tape
- External Antenna with N-type Female connector (Optional)
- TEW-ASAL1 (Optional)

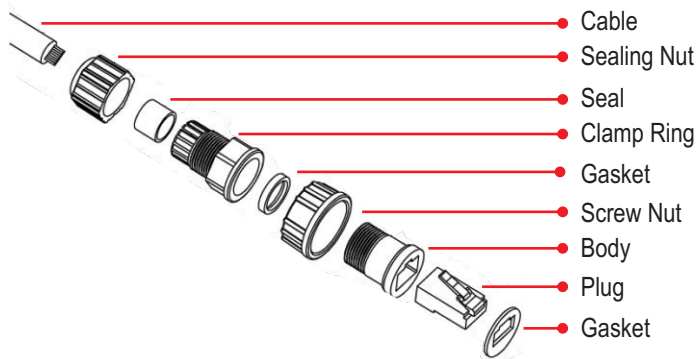
**Note:** The TEW-455APBO does not support IEEE 802.3af. You must use the special Power over Ethernet adapter that is supplied with the TEW-455APBO.

## Application

### 9dBi High Power Wireless Outdoor PoE Access Point (TEW-455APBO)



\*Check package contents for waterproof kit: (Ethernet Cable is not included)



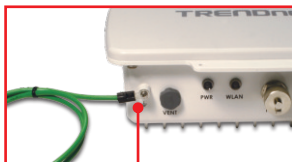
## 2. Hardware Installation

**Note:** Please connect the computer configuring the TEW-455APBO to the same switch/hub.

1. Remove the screw and washer from the grounding hole using a screwdriver.

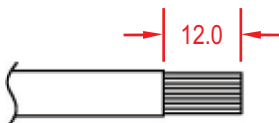


2. Align one end of the grounding wire over the hole. Then connect the screw and washer back in.



3. Connect the green grounding wire to a grounding object. e.g. Earth Driven rod, Grounded Electrical System, Building Frame.

4. Use a wire stripper to strip off about 2 inches of the cable sheath from one end of an Ethernet cable. The recommended wire gauge is 24AWG.



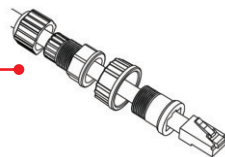
5. Insert the seal into the rear of the clamp ring. Then insert the gasket into the front end of the clamp ring.



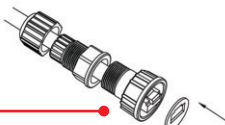
6. Insert the body, the screw nut, the sealing nut and clamp ring into the stripped end of the cable.



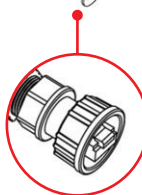
7. Insert the wires on the stripped end of the cable into the RJ-45 plug. Make sure the wires are inserted into the RJ-45 plug based TIA/EIA T-568A or T-568B standard.



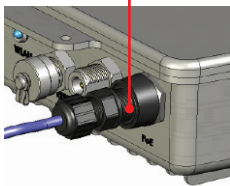
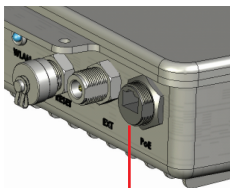
8. Crimp the stripped cable to the RJ-45 plug.



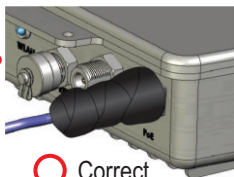
9. Insert the gasket to the front end of the connector. Then put the screw nut on the back.



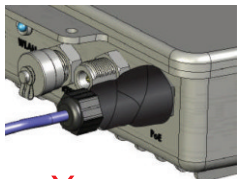
10. Connect the clamp ring and sealing nut to the **PoE** port on the rear of the TEW-455APBO. Hold the assembly firmly and tighten by hand.



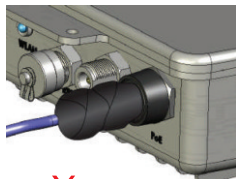
11. Wrap the waterproof RJ45 tightly with the waterproof tap for double protection from water. (The wrapped area of the RJ45 should cover from enclosure to cable.)



○ Correct

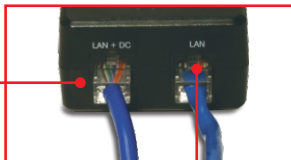


✗ Incorrect



✗ Incorrect

12. Connect the opposite end of the Ethernet cable to the **LAN + DC** port on the Power over Ethernet Adapter.



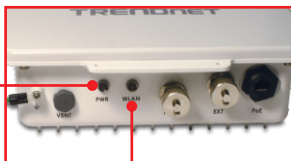
13. Connect one end of another Ethernet cable to the **LAN** port.

14. Connect the opposite end of the Ethernet cable to a LAN port on your network.

15. Connect the power cord into the Power over Ethernet adapter. Then connect the power cord into a power outlet.

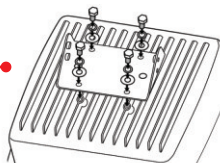


16. Verify that the following panel LEDs are on: **Power** and **WLAN**.



### 3. Mounting

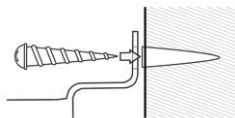
1. Align the mounting bracket with the holes on the bottom of the unit and secure it with the screws and washers provided.



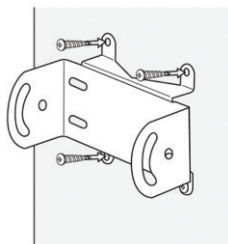
2. Use the wall bracket as a template and mark the wall for the correct screw / fastener position.

3. Drill holes for the fastener plugs at the marked positions on the wall.

4. Insert fastener plugs into the drilled holes.



5. Use the provided wood screws to screw the outdoor unit/swivel mounting bracket to the fastener plugs to the wall.

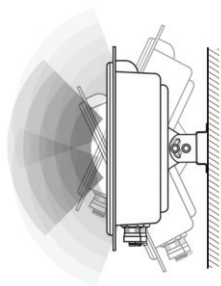




6. Insert the mounting bracket into the wall mounting bracket and secure with the washers and screws provided.

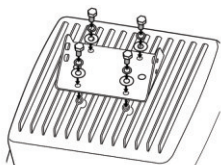
7. Adjust the orientation of the antenna as necessary.

8. Once the unit is positioned correctly, tighten all screws.

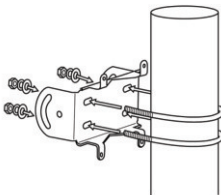


## Pole Mounting

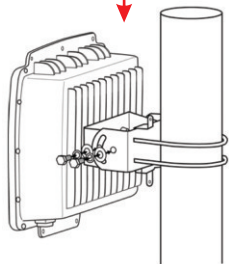
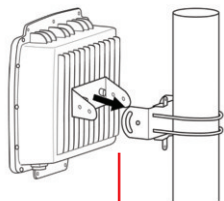
1. Align the mounting bracket with the holes on the bottom of the unit and secure it with the screws and washers provided.



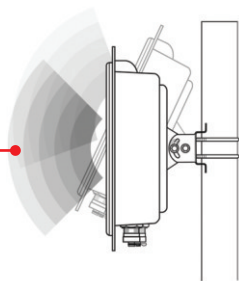
2. Slide the two provided u-clamps around the pole. Place the pole mounting bracket at the desired height and position.



**3.** Secure the mounting bracket to the pole mounting bracket using the nuts and washers provided.



**4.** Adjust the orientation of the antenna as necessary.



**5.** Once the unit is positioned correctly, tighten all screws.

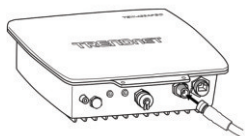
## 4. Connecting TRENDnet External Antenna

**Note:** Connecting a TRENDnet External Antenna to the TEW-455APBO requires the TEW-ASAL1.

1. Remove the metal cap from the connector labeled **EXT**.

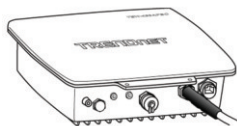
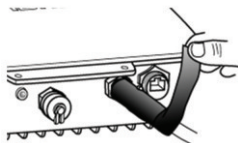


2. Screw one end of the TEW-ASAL1 to the EXT connector on the TEW-455APBO.



3. Screw another cable (plug) connector to the external antenna that you expect to connect. Please screw both the connectors as tight as you can.

4. Use weather-proof tape to wrap the connectors.



## 5. Configure the Access Point

Note: The Access Point can be configured using the Utility or a Web Browser. For non-Windows users change your computer's IP address to 192.168.10.x (where x is an available address from 1-254). Since the Access Point's default IP address is 192.168.10.100, make sure no other network devices are assigned an IP address of 192.168.10.100.

### Windows users

1. Insert the Utility CD-ROM into your computer's CD-ROM drive. Then click **Install Utility**.



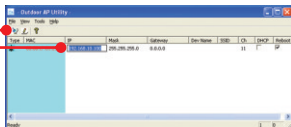
2. Follow the **InstallShield Wizard** instructions and then click **Finish**.



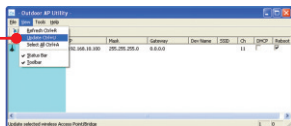
3. Double click the **Utility** icon on your desktop.



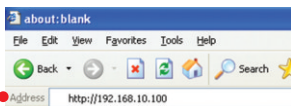
4. Click on the **Find** icon to detect your Access Point. Change the IP to be in the same subnet as your network.



5. Click **View** and click **Update** to save changes.



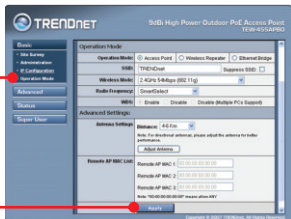
6. Open your web browser, type the IP address of Access Point in the Address bar, and then press **Enter**. The default IP address is 192.168.10.100.



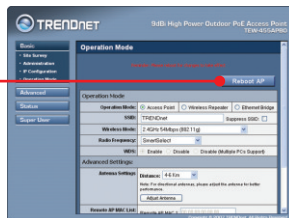
7. Enter the User name and Password, and then click **OK**. By default:  
User Name: **admin**  
Password: **admin**



8. Click **Basic > Operation Mode**. Select the desired **Operation Mode**, enter the desired **SSID** and then click **Apply**.  
By default: Operation Mode: **Access Point**  
SSID: **TRENDnet**



9. Click **Reboot AP** to save all changes.



## Your Installation is complete

For detailed information regarding the TEW-455APBO's configuration and advanced settings, please refer to User's Guide included on the Utility & Driver CD-ROM, or TRENDnet's website at <http://www.trendnet.com>.

## Register Your Product

To ensure the highest level of customer service and support, please take a moment to register your product Online at: [www.trendnet.com/register](http://www.trendnet.com/register)

Thank you for choosing TRENDnet

ENGLISH

FRANÇAIS

DEUTSCH

ESPAÑOL

РУССКИЙ

### **I am using a non-Windows based computer? How do I configure IP Address and Wireless settings on the Access Point?**

1. Assign your computer a static IP Address of 192.168.10.x (where X is an available address from 1 to 254).
2. Follow steps 5 and 6 in Section 5 Configure the Access Point to log on to the Browser configuration for the Access Point.
3. Follow step 7 in Section 5 Configure the Access Point to configure wireless settings.
4. Click **Basic > IP Configuration**. Enter an IP address that is in the same subnet as your network and then click **Apply**.
5. Click **Reboot AP** to save all changes.

### **I specified the IP address <http://192.168.10.100> in my Internet Browser's Address Bar, but an error message says "The page cannot be displayed". How can I get into the TEW-455APBO's web configuration page?**

1. Check your hardware settings again by following the instructions in section 2.
2. Make sure the LAN and WLAN lights are lit.
3. Make sure the TCP/IP settings are configured properly (see Q1).
4. Since the Access Point's default IP address is 192.168.10.100, make sure that no other network devices are assigned an IP address of 192.168.10.100.

### **If my network's IP is different than the Access Point's range, what should I do?**

You should still configure the Access Point first. After all the settings are applied, go to the Access Point's configuration page, click on TCP/IP settings and change the IP address of the Access Point to match your network's IP.

### **After I successfully configured the Access Point to meet my network settings, I can not connect to my network using wireless computers.**

If you have a DHCP server in your network, you need to go into TCP/IP settings again and re-select "Obtain an IP address automatically" to allow the PC to regain an IP address from your DHCP server.

### **All the settings are correct, but I can not make a wireless connection to the Access Point.**

1. Double check that the WLAN light on the Access Point is lit.
2. Power cycle the Access Point by unplugging the power to the Access Point. Wait 15 seconds, then plug the power back in.
3. Contact the manufacturer of your wireless network adapter. Make sure the wireless network adapter is configured with the proper SSID. The default SSID of the Access Point is **TRENDnet**.

### **I changed the password on the access point, but I can no longer login. What should I do?**

Reset the unit. Unplug the power to the access point. Unscrew the connector that is labeled reset. Press on the white reset button. Plug the power back in without letting go of the reset button. Wait 10 seconds, then let go of the reset button. The default user name and password is admin.

If you still encounter problems or have any questions regarding the **TEW-455APBO**, please contact TRENDnet's Technical Support Department.

## Certifications

This equipment has been tested and found to comply with FCC and CE Rules.

Operation is subject to the following two conditions:

- (1) This device may not cause harmful interference.
- (2) This device must accept any interference received. Including interference that may cause undesired operation.



Waste electrical and electronic products must not be disposed of with household waste. Please recycle where facilities exist. Check with you Local Authority or Retailer for recycling advice.



**NOTE:** THE MANUFACTURER IS NOT RESPONSIBLE FOR ANY RADIO OR TV INTERFERENCE CAUSED BY UNAUTHORIZED MODIFICATIONS TO THIS EQUIPMENT. SUCH MODIFICATIONS COULD VOID THE USER'S AUTHORITY TO OPERATE THE EQUIPMENT.

### ADVERTENCIA

En todos nuestros equipos se mencionan claramente las características del adaptador de alimentación necesario para su funcionamiento. El uso de un adaptador distinto al mencionado puede producir daños físicos y/o daños al equipo conectado. El adaptador de alimentación debe operar con voltaje y frecuencia de la energía eléctrica domiciliar existente en el país o zona de instalación.





## Product Warranty Registration

Please take a moment to register your product online.  
Go to TRENDnet's website at <http://www.trendnet.com/register>