



## Quick Installation Guide



**TEW-636APB**  
H/W: V1.0R

# Table of Contents

English .....	1
1. Before You Start .....	1
2. Hardware Installation .....	2
3. Configure the Access Point .....	3
Troubleshooting .....	6

# 1. Before You Start



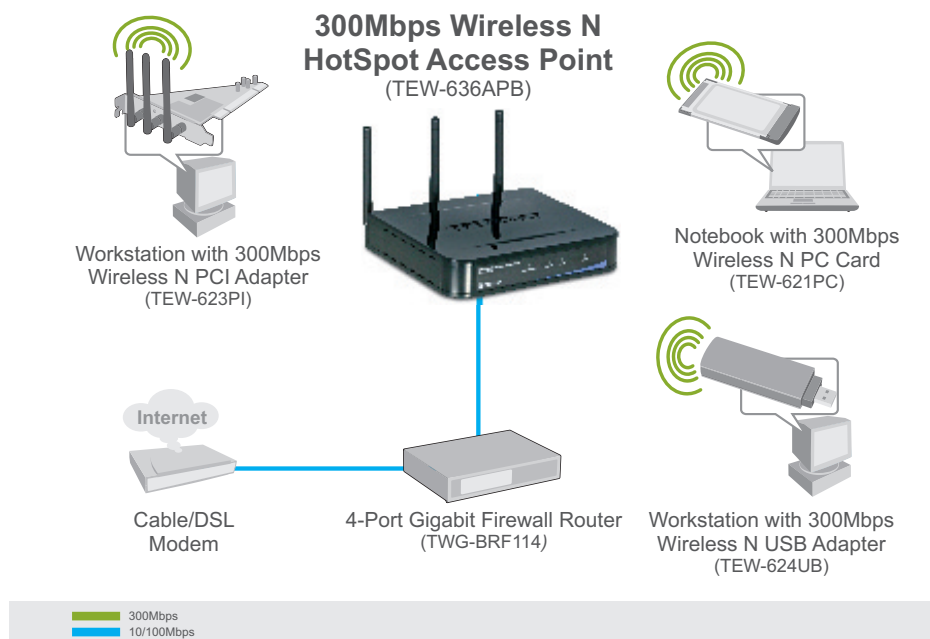
## Package Contents

- TEW-636APB
- User's Guide CD-ROM
- Quick Installation Guide
- AC Power Adapter (12V DC, 1A)
- 1 RJ-45 cable

## Installation Requirements

- Web Browser: Internet Explorer (5.5 or higher)
- A computer with a network adapter or wireless adapter properly installed
- A network Switch or Hub with an available network LAN port
- A RJ-45 network cable
- TEW-621PC version 2 or TEW-623PI version 2 (Optional)

## Application



## 2. Hardware Installation

**Note:** Locate an optimum location for the Access Point. The best place for the Access Point is usually at the center of your wireless network. Please connect the computer configuring the TEW-636APB to the same switch/hub.

1. Connect a RJ-45 cable from the Switch/Hub to the **LAN** port of the Access Point.



2. Connect the AC Power Adapter to the Access Point and then to a power outlet.

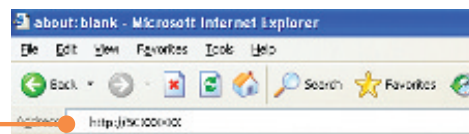


3. Verify that the following panel lights are on: **Power** and **WLAN**.

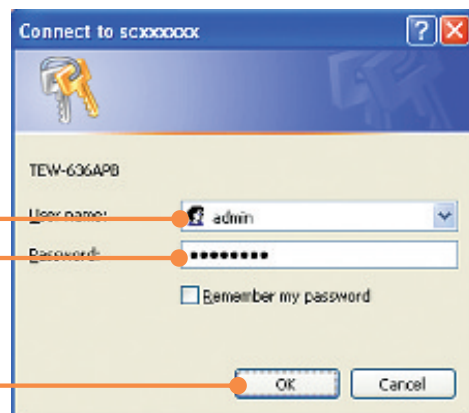
# 3. Configure the Access Point

**Note:** It is recommended that you configure the Access Point from a wired computer.

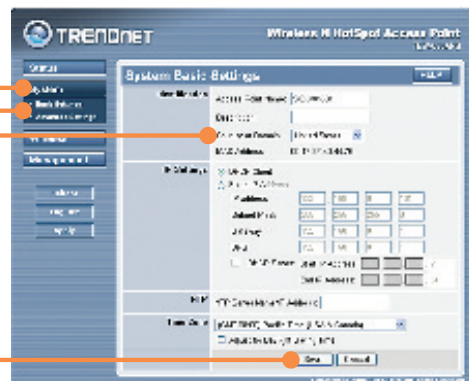
1. Open your web browser, type **http://SCXXXXXX**, in the Address bar, and then press **Enter**. XXXXXX represents the last 6 digits of the Mac Address. You can find the Mac Address on the bottom of the router.



2. Enter the User name and Password, and then click **OK**.  
User Name: **admin**  
Password: **password**



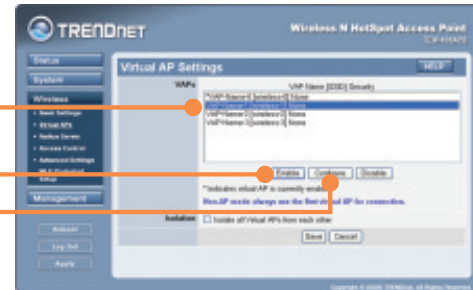
3. Click **System** and then click **Basic Settings**. Select your country or domain from the drop down menu, click Fixed IP Address, and type in an IP address, Subnet Mask, Gateway, and DNS to match your current network settings. Click **Save**.



4. Click **Wireless** and then click **Basic Settings**. Select the desired **Wireless Mode**, select **Access Point** for Operating mode and then click **Save**.



5. Click **Virtual APs**. Select a Virtual AP, click **Enable** and then click **Configure**.



**Note:** The example below is for WPA-PSK security. If your wireless adapters do not support WPA-PSK, then select WEP.

6. Enter a **SSID**, select the desired **Security System**, enter the **Network Key**, click **Save** and then click **Back**.



7. Repeat step 5 and 6 for each subsequent Virtual AP.

8. Click **Management** and then click **Admin Login**.



9. If desired, enter a new user name, check **Change Admin Password**, enter a new password, retype the new password and then click **Save**. By default:

User Name: **admin**  
Password: **password**



10. Click **Apply** and then click **Reboot**.  
Note: If you skip this step, any settings that you changed will NOT be saved.



**Your installation is now complete.**

For detailed information regarding the TEW-636APB's configuration and advanced settings, please refer to the User's Guide included on the Driver CD-ROM or TRENDnet's website at [www.trendnet.com](http://www.trendnet.com)

### Register Your Product

To ensure the highest level of customer service and support, please take a moment to register your product Online at: [www.trendnet.com/register](http://www.trendnet.com/register)  
Thank you for choosing TRENDnet

**Q1:** I typed `http://SCXXXXXX` in my Internet Browser's Address Bar, but an error message says "The page cannot be displayed." How can I get into the TEW-636APB's web configuration page?

**A1:** First, check your hardware settings again by following the instructions in section 2. Second, make sure the LAN and WLAN lights are lit. Third, verify the Mac Address of the access point. Look at the bottom of the access point. Copy the last six digits of the Mac Address. Then open up your browser and type in `http://SCXXXXXX` (XXXXXX represents the last six digits of the Mac Address) and then Enter. Fourth, perform a factory reset. Take a pin or paperclip, press on the reset button for 15 seconds, and then let go.

**Q2:** All the settings are correct, but I can not make a wireless connection to the Access Point.

**A2:** First, double check that the WLAN light on the Access Point is lit. Second, power cycle the Access Point. Unplug the power to the Access Point. Wait 15 seconds, then plug the power back in. Third, contact the manufacturer of your wireless network adapter. Make sure the wireless network adapter is configured with the proper SSID. The default SSID of the Access Point is **wireless 0**. If you have enabled any encryption on the Access Point, make sure to configure the wireless network adapter with the same Pre-shared key. If you do not remember the encryption key, log on to the access point configuration page from a wired computer. Click **Wireless -> Virtual AP**. Click on the desired Virtual AP and then click **Configure**.

If you still encounter problems or have any questions regarding the **TEW-636APB**, please contact TRENDnet's Technical Support Department.



## Certifications

This equipment has been tested and found to comply with FCC and CE Rules.

Operation is subject to the following two conditions:

- (1) This device may not cause harmful interference.
- (2) This device must accept any interference received. Including interference that may cause undesired operation.



Waste electrical and electronic products must not be disposed of with household waste. Please recycle where facilities exist. Check with you Local Authority or Retailer for recycling advice.



**NOTE:** THE MANUFACTURER IS NOT RESPONSIBLE FOR ANY RADIO OR TV INTERFERENCE CAUSED BY UNAUTHORIZED MODIFICATIONS TO THIS EQUIPMENT. SUCH MODIFICATIONS COULD VOID THE USER'S AUTHORITY TO OPERATE THE EQUIPMENT.

### ADVERTENCIA

En todos nuestros equipos se mencionan claramente las características del adaptador de alimentación necesario para su funcionamiento. El uso de un adaptador distinto al mencionado puede producir daños físicos y/o daños al equipo conectado. El adaptador de alimentación debe operar con voltaje y frecuencia de la energía eléctrica domiciliar existente en el país o zona de instalación.



# TRENDnet<sup>®</sup>

## Customer Support

Visit [www.trendnet.com/support](http://www.trendnet.com/support)

### Email:

[support@trendnet.com](mailto:support@trendnet.com)



## Europe (Germany • France • Italy • Spain • Switzerland • UK)

**Toll Free Telephone:** +00800 60 76 76 67

English/Espanol - 24/7

## Worldwide

**Telephone:** +[31] [0] 20 504 05 35

English/Espanol - 24/7

## Product Warranty Registration

Please take a moment to register your product online.

Go to TRENDnet's website at <http://www.trendnet.com/register>

# TRENDnet<sup>®</sup>

20675 Manhattan Place  
Torrance, CA 90501  
USA