

## Quick Installation Guide



TEW-654TR  
1.01

# Table of Contents

English .....	1
1. Before You Start .....	1
2. Hardware Installation .....	3
3. Configure the TEW-654TR .....	5
Troubleshooting .....	9

# 1. Before You Start



## Package Contents

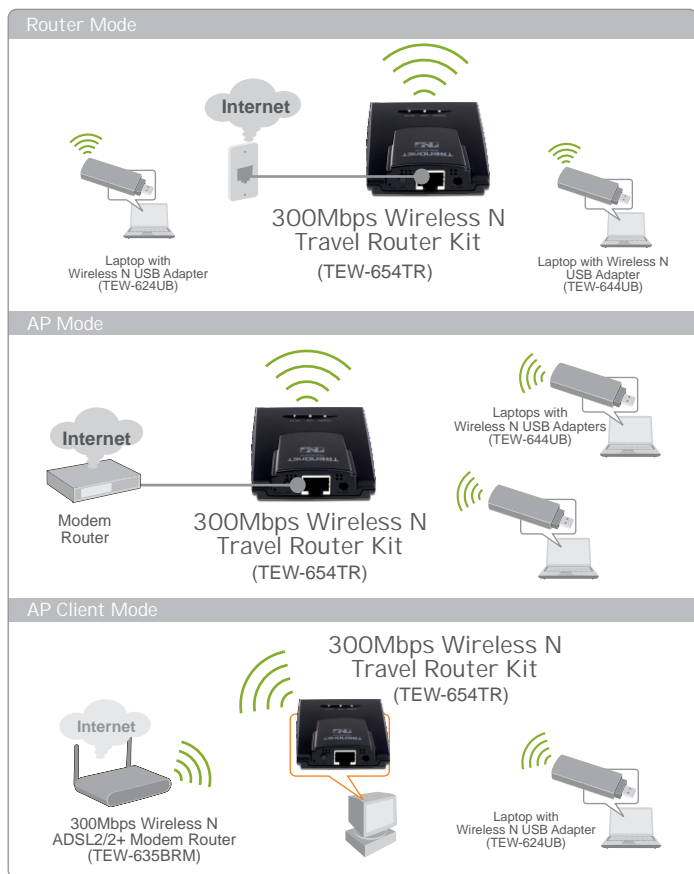
- TEW-654TR
- CD-ROM (User's Guide)
- Multi-Language Quick Installation Guide
- Travel case
- USB to power-pin cable (0.45m/2.5ft.)
- Cat. 5 Ethernet cable (1.1m/3.6ft.)
- Power adapter (5V, 1.2A)

## Installation Requirements

- A computer with a wireless network adapter properly installed
- Web Browser: Internet Explorer (6.0 or higher)
- Broadband Internet
- Installed Cable or DSL Modem

Note: For AP and AP Client mode instructions, please refer to the troubleshooting section and User's guide.

## Application

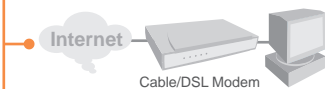


## 2. Hardware Installation

### Note:

1. Gather all information related to your Internet Connection before you start. If necessary, contact your Internet Service Provider (ISP).
2. The below steps is for router mode configuration. For AP and client mode instructions, please refer to the User's Guide.

1. Verify that you have an Internet connection when connecting your computer directly to the Cable or DSL modem or Ethernet jack. Open your browser (e.g. Internet Explorer) and type in a URL (e.g.) in the address bar.



2. Move the switch on the bottom of the TEW-654TR to RT mode.



3. Connect one end of the provided RJ-45 cable to the TEW-654TR's LAN port. Connect the other end of the cable to your modem or Ethernet jack (e.g. in a hotel room).



4. Connect the AC Power Adapter to the wireless router and then to a power outlet.



5. Verify that the following panel lights are on: POWER, LAN and WLAN.



6. Press the WPS button on the TEW-654TR for 5 seconds, then let go. The WLAN LED will be blinking amber.

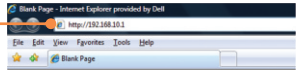


7. Follow the WPS push button setup instructions for your Wireless Adapter's configuration utility to connect to the TEW-654TR.

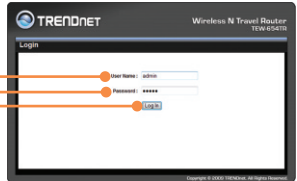


# 3. Configure the TEW-654TR

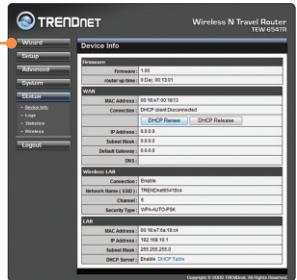
1. Open your web browser, type `http://192.168.10.1` in the Address bar, and then press Enter.



2. Enter the User Name and Password, and then click Log In. By default:  
User Name: admin  
Password: admin



3. Click Wizard.



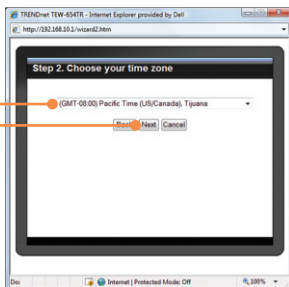
4. Click Next.



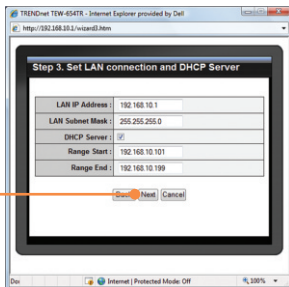
5. Enter a Password, verify the Password and then click Next. By default, the Password is admin.



6. Select your Time Zone and then click Next.



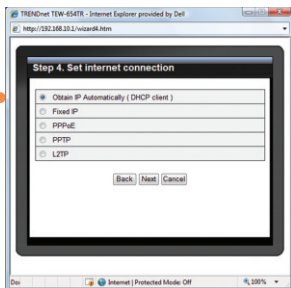
7. Click Next. Note: Do not change default settings unless it is conflicting with your existing hardware.



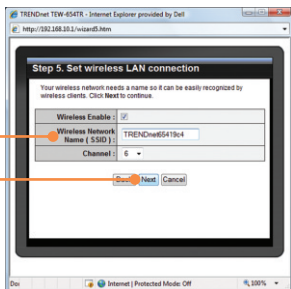


8. Configure the settings based on information provided by your ISP. Follow the wizard instructions to complete the configuration.

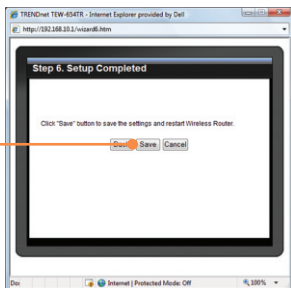
Note: Each Internet Connection type may have different options.



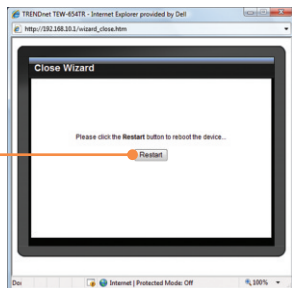
9. Enter the desired SSID and then click Next.



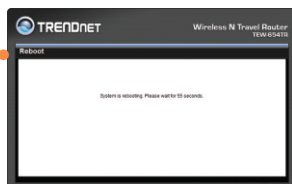
10. Click Save.



11. Click Restart.



12. Wait around 60 seconds while the router reboots.



13. Open up your browser and enter in a URL (e.g. www.trendnet.com) to verify that you have Internet connection.



Your configuration is now complete.

For detailed information regarding the TEW-654TR's configuration and advanced settings, please refer to the Troubleshooting section, User's Guide CD-ROM, or TRENDnet's website at <http://www.trendnet.com>.

### Register Your Product

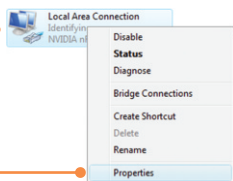
To ensure the highest level of customer service and support, please take a moment to register your product Online at: [www.trendnet.com/register](http://www.trendnet.com/register)  
Thank you for choosing TRENDnet

**Q1:** I typed <http://192.168.10.1> in my Internet Browser's Address Bar, but an error message says "The page cannot be displayed." How can I get into the TEW-654TR's web configuration page?

**A1:** First, check your hardware settings again by following the instructions in Section 2. Second, make sure the LAN and WLAN lights are lit. Third, make sure your TCP/IP settings are set to the following:

## Windows Vista

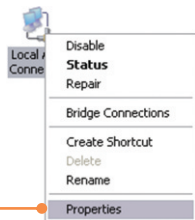
1. Go into the Control Panel, click Network and Internet, click Network and Sharing Center, click Manage Network Connections and then right-click the Local Area Connection icon and then click Properties.



2. Click Internet Protocol Version 4(TCP/IPv4) and then click Properties. Then click on Obtain an IP address automatically.

## Windows XP/2000

1. Go into the Control Panel, double-click the Network Connections icon and then right-click the Local Area Connection icon and then click Properties.





2. Click Internet Protocol (TCP/IP) and then click Properties. Then click on Obtain an IP address automatically.

Fourth, press on the factory reset button for 15 seconds.

Note: If you are trying to configure the TEW-654TR in AP or AP Client mode, see Q6.

**Q2:** I am not sure what type of Internet Account Type I have for my Cable/DSL connection. How do I find out?

**A2:** Contact your Internet Service Provider's (ISP) support service for the correct information.

**Q3:** I went through the Wizard, but I can not get onto the Internet. What should I do?

**A3:** First, verify that you can get onto the Internet with a direct connection into your modem. Second, contact your ISP and verify all the information that you have in regards to your Internet connection settings is correct. Third, power cycle your modem and router. Unplug the power to the modem and router. Wait 30 seconds, and then reconnect the power to the modem. Wait for the modem to fully boot up, and then reconnect the power to the router.

**Q4:** I can not make a wireless connection to the TEW-654TR. What should I do?

**A4:** First, double check that the WLAN light on the Router is lit. Second, power cycle the TEW-654TR. Unplug the power to the TEW-654TR. Wait 15 seconds, then plug the power back in to the TEW-654TR. Third, contact the manufacturer of your wireless network adapter and verify the steps for connecting to the TEW-654TR via Wi-Fi Protected Setup (WPS). If your wireless adapter does not support WPS, reset the router by pressing the reset button for 15 seconds. Then configure your wireless network adapter with the proper SSID. The preset SSID is TRENDnet654.

**Q5:** What is the USB cable for?

**A5:** You can use the USB cable to power the TEW-654TR through your computer instead of using the power adapter. Connect the power jack to the TEW-654TR and connect one of the USB connectors into your computer. If the USB port is not providing enough power to the TEW-654TR, you need to connect both USB connectors into your computer.

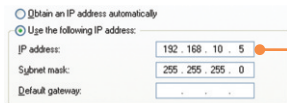
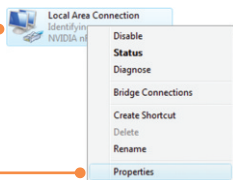
**Q6:** How do I configure AP or AP Client mode on the TEW-654TR?

**A6:** First, you need to assign a static IP address to your computer's network adapter in the 192.168.10.X subnet. Since the TEW-654TR's default IP address is 192.168.10.100 in AP and AP Client mode when no DHCP server is connected, do not assign an IP address of 192.168.10.100 to your computer's network adapter.

See the instructions below:

## Windows Vista

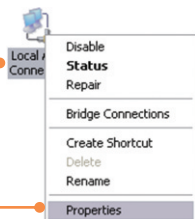
1. Go into the Control Panel, click Network and Internet, click Network and Sharing Center, click Manage Network Connections and then right-click the Local Area Connection icon and then click Properties.



2. Click Internet Protocol Version 4(TCP/IPv4) and then click Properties. Then click on Use the following IP address, and make sure you assign your network adapter an IP address in the subnet of 192.168.10.x.

## Windows XP/2000

1. Go into the Control Panel, double-click the Network Connections icon and then right-click the Local Area Connection icon and then click Properties.

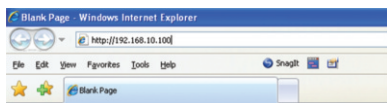


Obtain an IP address automatically  
 Use the following IP address:

IP address:	192 . 168 . 10 . 5
Subnet mask:	255 . 255 . 255 . 0
Default gateway:	. . .

2. Click Internet Protocol (TCP/IP) and then click Properties. Then click on Use the following IP address, and make sure you assign your network adapter an IP address in the subnet of 192.168.10.x.

Second, change the hardware switch on the bottom of the TEW-654TR to AP or Client. Third, connect the provided Ethernet cable from the Ethernet port on your computer to the Ethernet port on the TEW-654TR. Fourth, connect the power adapter into the TEW-654TR and plug the power adapter into an available power outlet. Fifth, open up your browser and enter [http://654TR\(AP Mode\)](http://654TR(AP Mode)), [http://654TR-client \(AP Client mode\)](http://654TR-client (AP Client mode)) or <http://192.168.10.100> into the address bar.



Sixth, refer to the User Guide for additional instructions. The User Guide is on the User Guide CD-ROM drive.

If you still encounter problems or have any questions regarding the TEW-654TR, please contact TRENDnet's Technical Support Department.

# Declaration of Conformity



## Company Information:

Company Name:  
TRENDware International, Inc.

Company Address:  
20675 Manhattan Place  
Torrance, CA 90501  
USA

## Product Information:

Product Description:  
300Mbps Wireless N Travel Router Kit

Model Number:  
TEW-654TR

Brand name:  
TRENDnet



## Technical Standards:

EN 300 328 V1.7.1: 10-2006  
EN 301 489-1 V1.8.1: 04-2008  
EN 301 489-17 V1.3.2: 04-2008  
EN 50385: 2002  
EN 60950-1: 2006

## Declaration:

*The product is herewith confirmed to comply with the requirements of Directive 1999/5/EC of the Council (European Parliament) on the radio and telecommunications terminal equipment.*

*I hereby declare that the products and devices mentioned above are consistent with the standards and provisions of the guidelines.*

Sonny Su

\_\_\_\_\_  
Name (Full Name)

June 12, 2009

\_\_\_\_\_  
Date

Director of Technology

\_\_\_\_\_  
Position / Title



\_\_\_\_\_  
Legal Signature

## GPL/LGPL General Information

This TRENDnet product includes free software written by third party developers. These codes are subject to the GNU General Public License ("GPL") or GNU Lesser General Public License ("LGPL"). These codes are distributed WITHOUT WARRANTY and are subject to the copyrights of the developers. TRENDnet does not provide technical support for these codes. The details of the GNU GPL and LGPL are included in the product CD-ROM.

Please also go to (<http://www.gnu.org/licenses/gpl.txt>) or (<http://www.gnu.org/licenses/lgpl.txt>) for specific terms of each license.

The source codes are available for download from TRENDnet's web site ([http://trendnet.com/downloads/list\\_gpl.asp](http://trendnet.com/downloads/list_gpl.asp)) for at least three years from the product shipping date.

You could also request the source codes by contacting TRENDnet.

20675 Manhattan Place, Torrance, CA 90501, USA. Tel: +1-310-961-5500 Fax: +1-310-961-5511

### Informations générales GPL/LGPL

Ce produit TRENDnet comprend un logiciel libre écrit par des programmeurs tiers. Ces codes sont sujet à la GNU General Public License ("GPL" Licence publique générale GNU) ou à la GNU Lesser General Public License ("LGPL" Licence publique générale limitée GNU). Ces codes sont distribués SANS GARANTIE et sont sujets aux droits d'auteurs des programmeurs. TRENDnet ne fournit pas d'assistance technique pour ces codes. Les détails concernant les GPL et LGPL GNU sont repris sur le CD-ROM du produit.

Veuillez également vous rendre en (<http://www.gnu.org/licenses/gpl.txt>) ou en (<http://www.gnu.org/licenses/lgpl.txt>) pour les conditions spécifiques de chaque licence.

Les codes source sont disponibles au téléchargement sur le site Internet de TRENDnet web site ([http://trendnet.com/downloads/list\\_gpl.asp](http://trendnet.com/downloads/list_gpl.asp)) durant au moins 3 ans à partir de la date d'expédition du produit.

Vous pouvez également demander les codes source en contactant TRENDnet.

20675 Manhattan Place, Torrance, CA 90501, USA. Tel: +1-310-961-5500 Fax: +1-310-961-5511

### Allgemeine Informationen zu GPL/LGPL

Dieses Produkt enthält die freie Software "netfilter/iptables" (© 2000-2004 netfilter project <http://www.netfilter.org>) und die freie Software "Linux\_mtd" (Memory Technology Devices) Implementation (© 2000 David Woodhouse), erstmals integriert in Linux Version 2.4.0-test 3 v. 10.07.2000 (<http://www.kernel.org/pub/linux/kernel/v2.4/old-test-kernels/linux-2.4.0-test3.tar.bz2>), sowie weitere freie Software. Sie haben durch den Erwerb dieses Produktes keinerlei Gewährleistungsansprüche gegen die Berechtigten an der oben genannten Software erworben; weil diese die Software kostenfrei lizenzieren gewähren sie keine Haftung gemäß unten abgedruckten Lizenzbedingungen. Die Software darf von jedermann im Quell- und Objektcode unter Beachtung der Lizenzbedingungen der GNU General Public License Version 2, und GNU Lesser General Public License (LGPL) vervielfältigt, verbreitet und verarbeitet werden. Die Lizenz ist unten im englischsprachigen Originalwortlaut wiedergegeben. Eine nichtoffizielle Übersetzung in die deutsche Sprache finden Sie im Internet unter (<http://www.gnu.de/documents/gpl-2.0.de.html>). Eine allgemeine öffentliche GNU Lizenz befindet sich auch auf der mitgelieferten CD-ROM.

Sie können Quell- und Objektcode der Software für mindestens drei Jahre auf unserer Homepage [www.trendnet.com](http://www.trendnet.com) im Downloadbereich ([http://trendnet.com/langen/downloads/list\\_gpl.asp](http://trendnet.com/langen/downloads/list_gpl.asp)) downloadend. Sofern Sie nicht über die Möglichkeit des Downloads verfügen können Sie bei TRENDnet.

20675 Manhattan Place, Torrance, CA 90501 - U.S.A. -, Tel.: +1-310-961-5500, Fax: +1-310-961-5511 die Software anfordern.

### Información general sobre la GPL/LGPL

Este producto de TRENDnet incluye un programa gratuito desarrollado por terceros. Estos códigos están sujetos a la Licencia pública general de GNU ("GPL") o la Licencia pública general limitada de GNU ("LGPL"). Estos códigos son distribuidos SIN GARANTÍA y están sujetos a las leyes de propiedad intelectual de sus desarrolladores. TRENDnet no ofrece servicio técnico para estos códigos. Los detalles sobre las licencias GPL y LGPL de GNU se incluyen en el CD-ROM del producto.

Consulte también el (<http://www.gnu.org/licenses/gpl.txt>) ó el (<http://www.gnu.org/licenses/lgpl.txt>) para ver las cláusulas específicas de cada licencia.

Los códigos fuentes están disponibles para ser descargados del sitio Web de TRENDnet

([http://trendnet.com/downloads/list\\_gpl.asp](http://trendnet.com/downloads/list_gpl.asp)) durante por lo menos tres años a partir de la fecha de envío del producto.

También puede solicitar el código fuente llamando a TRENDnet.

20675 Manhattan Place, Torrance, CA 90501, USA. Tel: +1-310-961-5500 Fax: +1-310-961-5511

### GPL/LGPL

TRENDnet

GNU General Public License ("GPL") GNU

Lesser General Public License ("LGPL").

TRENDnet

GNU GPL LGPL

(<http://www.gnu.org/licenses/gpl.txt>) (<http://www.gnu.org/licenses/lgpl.txt>)

TRENDnet ([http://trendnet.com/downloads/list\\_gpl.asp](http://trendnet.com/downloads/list_gpl.asp))

TRENDnet.

20675 Manhattan Place, Torrance, CA 90501, USA. Tel: +1-310-961-5500 Fax: +1-310-961-5511



## GPL/LGPL informações Gerais

Este produto TRENDnet inclui software gratuito desenvolvido por terceiros. Estes códigos estão sujeitos ao GPL (GNU General Public License) ou ao LGPL (GNU Lesser General Public License). Estes códigos são distribuídos SEM GARANTIA e estão sujeitos aos direitos autorais dos desenvolvedores. TRENDnet não presta suporte técnico a estes códigos. Os detalhes do GNU GPL e do LGPL estão no CD-ROM do produto.

Favor acessar <http://www.gnu.org/licenses/gpl.txt> ou <http://www.gnu.org/licenses/lgpl.txt> para os termos específicos de cada licença.

Os códigos fonte estão disponíveis para download no site da TRENDnet ([http://trendnet.com/langen/downloads/list\\_gpl.asp](http://trendnet.com/langen/downloads/list_gpl.asp)) por pelo menos três anos da data de embarque do produto.

Você também pode solicitar os códigos fonte contactando TRENDnet, 20675 Manhattan Place, Torrance, CA 90501, USA. Tel: +1-310-961-5500, Fax: +1-310-961-5511.

## GPL/LGPL üldinformatsioon

See TRENDneti toode sisaldab vaba tarkvara, mis on kirjutatud kolmanda osapoole poolt. Koodid on allutatud GNU (General Public License) Üldise Avaliku Litsentsi (GPL) või GNU (Lesser General Public License) ("LGPL") Vähem Üldine Avalik Litsentsiga. Koode vahendatakse ILMA GARANTIITA ja need on allutatud arendajate poolt. TRENDnet ei anna koodidele tehnilist luge. Detailsemat infot GNU GPL ja LGPL kohta leiate toote CD-ROMil. Infot mõlema litsentsi spetsiifiliste terminite kohta leiate (<http://www.gnu.org/licenses/gpl.txt>) või (<http://www.gnu.org/licenses/lgpl.txt>).

Infot mõlema litsentsi spetsiifiliste terminite kohta leiate (<http://www.gnu.org/licenses/gpl.txt>) või (<http://www.gnu.org/licenses/lgpl.txt>).

Lähtekoodi on võimalik alla laadida TRENDneti kodulehelt ([http://trendnet.com/langen/downloads/list\\_gpl.asp](http://trendnet.com/langen/downloads/list_gpl.asp)) kolme aasta jooksul alates toote kättesaamise kuupäevast.

Samuti võite lähtekoodi paluda TRENDnet'ilt, 20675 Manhattan Place, Torrance, CA 90501, USA. Tel: +1-310-961-5500, Fax: +1-310-961-5511.

## Certifications

This equipment has been tested and found to comply with FCC and CE Rules.

Operation is subject to the following two conditions:

(1) This device may not cause harmful interference.

(2) This device must accept any interference received. Including interference that may cause undesired operation.



Waste electrical and electronic products must not be disposed of with household waste. Please recycle where facilities exist. Check with your Local Authority or Retailer for recycling advice.



**NOTE:** THE MANUFACTURER IS NOT RESPONSIBLE FOR ANY RADIO OR TV INTERFERENCE CAUSED BY UNAUTHORIZED MODIFICATIONS TO THIS EQUIPMENT. SUCH MODIFICATIONS COULD VOID THE USER'S AUTHORITY TO OPERATE THE EQUIPMENT.

## ADVERTENCIA

En todos nuestros equipos se mencionan claramente las características del adaptador de alimentación necesario para su funcionamiento. El uso de un adaptador distinto al mencionado puede producir daños físicos y/o daños al equipo conectado. El adaptador de alimentación debe operar con voltaje y frecuencia de la energía eléctrica domiciliar existente en el país o zona de instalación.



**TRENDnet**®

## Product Warranty Registration

Please take a moment to register your product online.  
Go to TRENDnet's website at <http://www.trendnet.com/register>

**TRENDnet**®

20675 Manhattan Place  
Torrance, CA 90501  
USA