





Quick Installation Guide  

**TEW-673GRU**  
1.01

# Table of Contents

<b>English</b>	<b>1</b>
1. Before You Start	1
2. Hardware Installation	2
3. Configure the Wireless Router	4
4. Installing the Utility	8
5. Printing	10
6. Scanning	11
7. Storage	12
<b>Troubleshooting</b>	<b>13</b>



## Package Contents

- TEW-673GRU
- CD-ROM (Utility and User's Guide)
- Multi-Language Quick Installation Guide
- Cat. 5 Ethernet cable (1.5m / 5ft.)
- AC Power Adapter (12V DC, 2A)

## System Requirements

- A computer with a wired or wireless network adapter properly installed
- Web Browser: Internet Explorer (5.0 or higher)
- Broadband Internet
- Installed Cable or DSL Modem

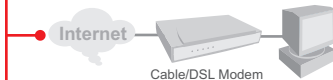
### **Note:**

1. Verify that any software that is required to operate your USB device is installed before installing the TEW-673GRU.
2. Do not install the TEW-673GRU utility and connect any USB devices to the TEW-673GRU until instructed to do so.
3. The TEW-673GRU utility must be installed on each computer in order to use any USB device that is connected to the network hub.
4. The TEW-673GRU does not support USB hubs.

## 2. Hardware Installation

**Note:** Gather all information related to your Internet Connection before you start. If necessary, contact your Internet Service Provider (ISP).

1. Verify that you have an Internet connection when connecting your computer directly to the Cable or DSL modem. Open your browser (e.g. Internet Explorer) and type in a URL (e.g. <http://www.trendnet.com>) in the address bar.



2. If you plan on connecting a multi-function printer to the USB port on the TEW-673GRU, install the printer drivers on your computer. Then shutdown the printer and disconnect the printer from your computer.

**Note:** Please refer to your printer's manual for printer installation instructions.

3. Connect one end of a RJ-45 cable to the TEW-673GRU's WAN port. Connect the other end of the cable to your modem.



5. Connect one end of a RJ-45 cable to one of the TEW-673GRU's LAN ports. Connect the other end of the cable to the computer's Ethernet port.

ENGLISH

FRANÇAIS

DEUTSCH

ESPAÑOL

РУССКИЙ

5. Connect the 3dBi detachable antennas to the TEW-673GRU.



6. Connect the USB printer or USB storage device to a USB port on the TEW-673GRU.

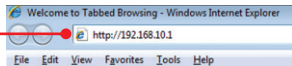
7. Connect the AC Power Adapter to the wireless router and then to a power outlet.

8. Verify that the following panel lights are on:  
**Power, LAN, WAN, WLAN and USB.**

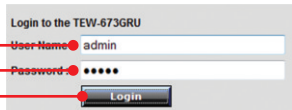
### 3. Configure the Wireless Router

**Note:** It is recommended that you configure the Wireless Router from a wired computer.

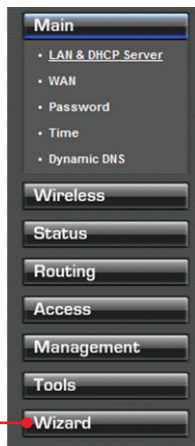
1. Open your web browser, type **http://192.168.10.1** in the Address bar, and then press **Enter**.



2. Enter the **User Name** and **Password**, and then click **Login**.  
**User Name:** admin  
**Password:** admin



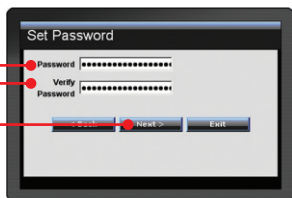
3. The Wizard will automatically appear. Click **Wizard** if the Wizard does not automatically appear.



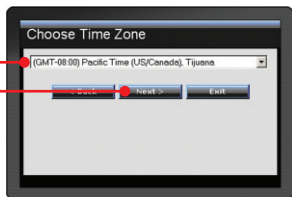
4. Click **Next**.



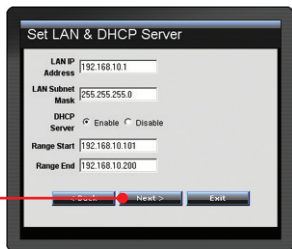
5. Enter a **Password**, verify the **Password** and then click **Next**. By default, the **Password** is **admin**.



6. Select your **Time Zone** and then click **Next**.

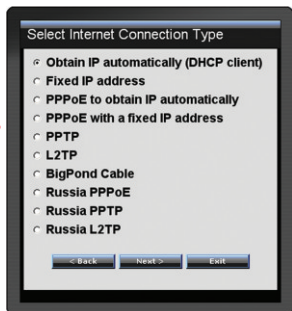


7. Click **Next**. Note: Do not change default settings unless it is conflicting with your existing hardware.

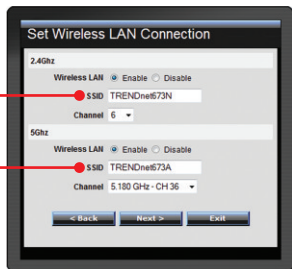


8. Configure the settings based on information provided by your ISP. Follow the wizard instructions to complete the configuration.

**Note:** Each Internet Connection type may have different options.

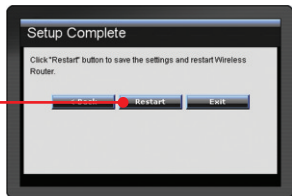


9. Enter the desired **SSID**. Then click **Next**. By default, the SSID for 2.4GHz WLAN is TRENDnet673N. By default, the SSID for 5GHz WLAN is TRENDnet673A.

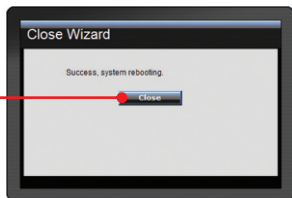


**Note:** It is recommended that you enable encryption on the wireless router. Please refer to the User Guide on the User's Guide CD-ROM for information on setting up encryption on the wireless router.

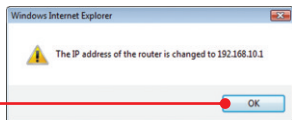
10. Click **Restart**.



11. Click **Close**.



12. Click **OK**.





13. Open up your browser and enter in a URL (e.g. [www.trendnet.com](http://www.trendnet.com)) to verify that you have Internet connection.



## Your Installation is complete

For detailed information regarding the **TEW-673GRU's** configuration and advanced settings, please refer to the Troubleshooting section, User's Guide on the Utility CD-ROM, or TRENDnet's website at <http://www.trendnet.com>.

## Register Your Product

To ensure the highest level of customer service and support, please take a moment to register your product Online at: [www.trendnet.com/register](http://www.trendnet.com/register)  
Thank you for choosing TRENDnet.

## 4. Install the Utility

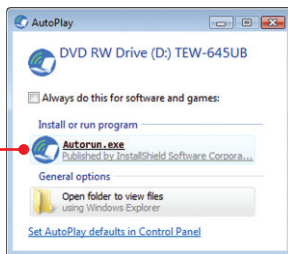
### Windows 7 / Vista / XP / 2000

#### Note:

1. Before installing the utility, install the printer drivers on your computer. Then shutdown the printer and disconnect the printer from your computer. Please refer to your printer's manual for printer installation instructions.
2. For Mac OS X (10.1~10.4) instructions, please refer to the User's Guide on the Utility CD-ROM.

1. Insert the **Utility CD-ROM** into your computer's CD-ROM Drive.

2. Click **Run Autorun.exe**  
(Windows 7/ Vista only).



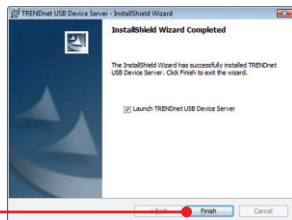
3. Click **Install Utility**.



4. Click **Next**.



5. Follow the **InstallShield Wizard** instructions. Then click **Finish**.



## 5. Printing

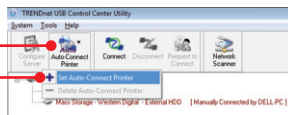
### Note:

1. Only one user can print at a time in Auto Connect mode. Once a user has finished printing, another user can print to the printer.
2. For Mac OS X (10.1~10.4) instructions, please refer to the User's Guide on the Utility CD-ROM.

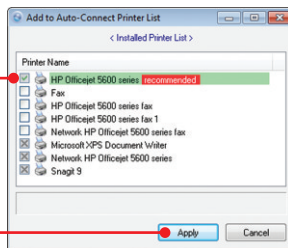
1. Double click on the TRENDnet USB Control Center icon.



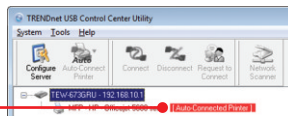
2. Select the printer. Click **Auto-Connect Printer** and click **Set Auto-Connect Printer**.



3. Select the desired printer and click **Apply**.



4. The USB Device Control Center will now show the printer as an **Auto-Connected Printer**.



5. User can now start printing.

6. Select the printer. Then click **Disconnect**. (Optional).



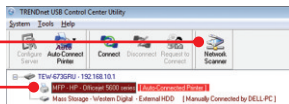
**Note:** For Auto Connect printing, a user does not have to wait for the current owner to click disconnect. Follow step 1 to grab ownership of the print server.

## 6. Scanning

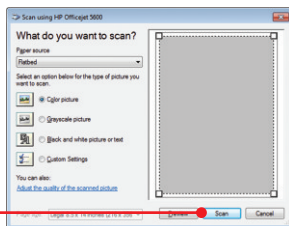
### Note:

1. Only one user can scan at a time in Network Scanner mode. Once a user has finished scanning, another user can scan documents.
2. For Mac OS X (10.1~10.4) instructions, please refer to the User's Guide on the Utility CD-ROM.

1. Select the printer. Click **Network Scanner**.

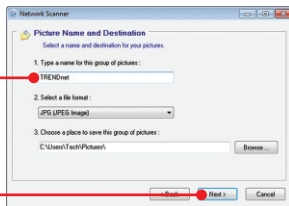


2. Place the document on the Multi-Function Printer's Scanner bed.

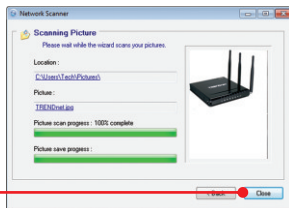


3. Click **Scan**.

4. Type in a name, select image type and choose the desired path. Then click **Next**.



5. Wait while the picture is being scanned. Then click **Close**.



## 7. Storage

### Note:

1. Only one user can connect to the USB storage device at a time.
2. For Mac OS X (10.1~10.4) instructions, please refer to the User's Guide on the Utility CD-ROM.

1. Double click on the TRENDnet USB Control Center icon.



2. Click **Connect**.



3. Select **Open folder to view files**.



4. Click **OK** (Windows XP only).

5. Click **Disconnect** to disconnect from the storage device.



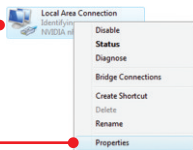
# Troubleshooting

1. I typed `http://192.168.10.1` in my Internet Browser's Address Bar, but an error message says "The page cannot be displayed." How can I get into the TEW-673GRU's web configuration page?

1. Check your hardware settings again by following the instructions in Section 2.
2. Make sure the LAN and WLAN lights are lit.
3. Make sure your TCP/IP settings are set to **Obtain an IP address automatically** (see the steps below).
4. Press on the factory reset button for 15 seconds.

## Windows 7

1. Go into the **Control Panel**, click **Network and Sharing Center**, click **Change Adapter Settings** and then right-click the **Local Area Connection** icon and then click **Properties**.



Obtain an IP address automatically

Use the following IP address:

IP address:

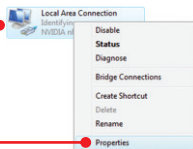
Subnet mask:

Default gateway:

2. Click **Internet Protocol Version 4(TCP/IPv4)** and then click **Properties**. Then click on **Obtain an IP address automatically**.

## Windows Vista

1. Go into the **Control Panel**, click **Network and Internet**, click **Network and Sharing Center**, click **Manage Network Connections** and then right-click the **Local Area Connection** icon and then click **Properties**.



Obtain an IP address automatically

Use the following IP address:

IP address:

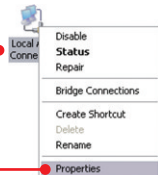
Subnet mask:

Default gateway:

2. Click **Internet Protocol Version 4(TCP/IPv4)** and then click **Properties**. Then click on **Obtain an IP address automatically**.

## Windows XP/2000

1. Go into the **Control Panel**, double-click the **Network Connections** icon and then right-click the **Local Area Connection** icon and then click **Properties**.





2. Click **Internet Protocol (TCP/IP)** and then click **Properties**. Then click on **Obtain an IP address automatically**.

## 2. I am not sure what type of Internet Account Type I have for my Cable/DSL connection. How do I find out?

Contact your Internet Service Provider's (ISP) support service for the correct information.

## 3. The Wizard does not appear. What should I do?

1. Click on Wizard on the left hand side.
2. Second, near the top of the browser, "Pop-up blocked" message appear. Right click on the message and select Always Allow Pop-ups from This Site. The next time to login to the TEW- 673GRU, this window will appear.
3. Make sure your TCP/IP settings are set to **Obtain an IP address automatically** (see the steps below).

## 4. I went through the Wizard, but I can not get onto the Internet. What should I do?

1. Verify that you can get onto the Internet with a direct connection into your modem.
2. Contact your ISP and verify all the information that you have in regards to your Internet connection settings is correct.
3. Power cycle your modem and router. Unplug the power to the modem and router. Wait 30 seconds, and then reconnect the power to the modem. Wait for the modem to fully boot up, and then reconnect the power to the router.

## 5. I can not make a wireless connection to the Router. What should I do?

1. Make sure that the antenna is connected to the TEW-673GRU.
2. Double check that the WLAN light on the Router is lit.
3. Login to your router. Enter <http://192.168.10.1> into the address bar of your router. The default user name and password is admin. Click **Wireless** and then click **Basic**. Make sure Enabled is selected for Wireless and then click **Apply**.
4. Power cycle the TEW-673GRU. Unplug the power to the TEW-673GRU. Wait 15 seconds, then plug the power back in to the TEW-673GRU.
5. Contact the manufacturer of your wireless network adapter and make sure the wireless network adapter is configured with the proper SSID. The preset SSID is TRENDnet673.

## 6. The TRENDnet USB Control Center does not detect the TEW-673GRU. What should I do?

1. Double check your hardware connections; make sure that the TEW-673GRU is powered ON and is properly connected.
2. Disable any software firewall programs such as ZoneAlarm or Norton Internet Security. If your computer is running Windows 7, Vista or XP, disable the built-in firewall.
3. Go to **System -> Exit** in the USB Control Center to close the program. Then double click on the TRENDnet USB Control Center icon to open up the program.
4. Power cycle the TEW-673GRU. Unplug the power to the TEW-673GRU, wait 15 seconds, then plug the TEW-673GRU back in.



**7. No window appears after I connect my computer to my storage device. What should I do?**

1. On Windows 7/Vista, click the windows icon on the bottom right hand corner and click **Computer**. A list of drives appears. Double click on the drive for your storage device.
2. On Windows 2000/XP, double click on **My Computer**. A list of drives appears. Double click on the drive for your storage device.

**8. A connect device failed error message appears when I try to connect to my USB storage device. What should I do?**

This message appears when another computer current has access to the USB storage device. Press **Request to Connect** in the USB Control Center utility and wait for the other user to accept your request. You may also get access to the USB storage device by unplugging the power to the router and plugging the power to the router back in. In the USB Control Center utility, click **Connect**. The error message will no longer appear.

**9. I cannot set my printer as an auto-connect printer. What should I do?**

1. If you did not follow the exact steps in section 4. Install the Utility, uninstall the printer drivers and the TRENDnet USB Control Center utility.
2. Connect the printer directly to your computer and reinstall the printer drivers.
3. Follow the directions in section 4. Install the Utility to reinstall the TRENDnet USB Control Center utility.

**10. I am not able to print or scan. What should I do?**

Verify that no other computer is using the printer. In the utility, if there is a computer name next to the printer name, another computer is using the printer. Once the user has finished printing or scanning, you will be able to print or scan.

**11. How do I use the LCD management interface?**

1. Use the left and right arrows to navigate between the difference menu options.
2. Use the down arrow to select a menu option.
3. Use the left and right arrows to navigate between the different submenu options.
4. Use the up and down arrow (if applicable) to navigate within each submenu option.
5. Keep pressing the up arrow to exit the selected submenu option.
6. Press the up arrow to exit the selected menu option.

If you still encounter problems or have any questions regarding the **TEW-673GRU**, please contact TRENDnet's Technical Support Department.

# Declaration of Conformity



## Company Information:

Company Name:  
TRENDware International, Inc.

Company Address:  
20675 Manhattan Place  
Torrance, CA 90501  
USA

## Product Information:

Product Description:  
300Mbps Concurrent Dual Band Wireless N Gigabit Router

Model Number:  
TEW-673GRU

Brand name:  
TRENDnet



## Technical Standards:

EN 300 328 V1.7.1: 10-2006  
EN 301 489-1 V1.8.1: 04-2008  
EN 301 489-17 V1.3.2: 04-2008  
EN 301 893 V1.5.1 :12-2008  
EN 50385: 2002  
EN 60950-1: 2006

## Declaration:

*The product is herewith confirmed to comply with the requirements of Directive 1999/5/EC of the Council (European Parliament) on the radio and telecommunications terminal equipment.*

*I hereby declare that the products and devices mentioned above are consistent with the standards and provisions of the guidelines.*

Sonny Su

\_\_\_\_\_  
Name (Full Name)

January 4, 2010

\_\_\_\_\_  
Date

Director of Technology

\_\_\_\_\_  
Position / Title

\_\_\_\_\_  
Legal Signature

## GPL/LGPL General Information

This TRENDnet product includes free software written by third party developers. These codes are subject to the GNU General Public License ("GPL") or GNU Lesser General Public License ("LGPL"). These codes are distributed WITHOUT WARRANTY and are subject to the copyrights of the developers. TRENDnet does not provide technical support for these codes. The details of the GNU GPL and LGPL are included in the product CD-ROM.

Please also go to (<http://www.gnu.org/licenses/gpl.txt>) or (<http://www.gnu.org/licenses/lgpl.txt>) for specific terms of each license.

The source codes are available for download from TRENDnet's web site ([http://trendnet.com/downloads/list\\_gpl.asp](http://trendnet.com/downloads/list_gpl.asp)) for at least three years from the product shipping date.

You could also request the source codes by contacting TRENDnet.

20675 Manhattan Place, Torrance, CA 90501, USA. Tel: +1-310-961-5500 Fax: +1-310-961-5511

### Informations générales GPL/LGPL

Ce produit TRENDnet comprend un logiciel libre écrit par des programmeurs tiers. Ces codes sont sujet à la GNU General Public License ("GPL" Licence publique générale GNU) ou à la GNU Lesser General Public License ("LGPL" Licence publique générale limitée GNU). Ces codes sont distribués SANS GARANTIE et sont sujets aux droits d'auteurs des programmeurs. TRENDnet ne fournit pas d'assistance technique pour ces codes. Les détails concernant les GPL et LGPL GNU sont repris sur le CD-ROM du produit.

Veuillez également vous rendre en (<http://www.gnu.org/licenses/gpl.txt>) ou en (<http://www.gnu.org/licenses/lgpl.txt>) pour les conditions spécifiques de chaque licence.

Les codes source sont disponibles au téléchargement sur le site Internet de TRENDnet web site ([http://trendnet.com/downloads/list\\_gpl.asp](http://trendnet.com/downloads/list_gpl.asp)) durant au moins 3 ans à partir de la date d'expédition du produit.

Vous pouvez également demander les codes source en contactant TRENDnet.

20675 Manhattan Place, Torrance, CA 90501, USA. Tel: +1-310-961-5500 Fax: +1-310-961-5511

### Allgemeine Informationen zu GPL/LGPL

Dieses Produkt enthält die freie Software "netfilter/iptables" (© 2000-2004 netfilter project <http://www.netfilter.org>) und die freie Software "Linux\_mtd" (Memory Technology Devices) Implementation (© 2000 David Woodhouse), erstmals integriert in Linux Version 2.4.0-test 3 v. 10.07.2000 (<http://www.kernel.org/pub/linux/kernel/v2.4/old-test-kernels/linux-2.4.0-test3.tar.bz2>), sowie weitere freie Software. Sie haben durch den Erwerb dieses Produktes keinerlei Gewährleistungsansprüche gegen die Berechtigten an der oben genannten Software erworben; weil diese die Software kostenfrei lizenzieren gewähren sie keine Haftung gemäß unten abgedruckten Lizenzbedingungen. Die Software darf von jedermann im Quell- und Objektcode unter Beachtung der Lizenzbedingungen der GNU General Public License Version 2, und GNU Lesser General Public License (LGPL) vervielfältigt, verbreitet und verarbeitet werden. Die Lizenz ist unten im englischsprachigen Originalwortlaut wiedergegeben. Eine nichtoffizielle Übersetzung in die deutsche Sprache finden Sie im Internet unter (<http://www.gnu.de/documents/gpl-2.0.de.html>). Eine allgemeine öffentliche GNU Lizenz befindet sich auch auf der mitgelieferten CD-ROM.

Sie können Quell- und Objektcode der Software für mindestens drei Jahre auf unserer Homepage [www.trendnet.com](http://www.trendnet.com) im Downloadbereich ([http://trendnet.com/langen/downloads/list\\_gpl.asp](http://trendnet.com/langen/downloads/list_gpl.asp)) downloadend. Sofern Sie nicht über die Möglichkeit des Downloads verfügen können Sie bei TRENDnet.

20675 Manhattan Place, Torrance, CA 90501 - U.S.A. -, Tel.: +1-310-961-5500, Fax: +1-310-961-5511 die Software anfordern.

### Información general sobre la GPL/LGPL

Este producto de TRENDnet incluye un programa gratuito desarrollado por terceros. Estos códigos están sujetos a la Licencia pública general de GNU ("GPL") o la Licencia pública general limitada de GNU ("LGPL"). Estos códigos son distribuidos SIN GARANTÍA y están sujetos a las leyes de propiedad intelectual de sus desarrolladores. TRENDnet no ofrece servicio técnico para estos códigos. Los detalles sobre las licencias GPL y LGPL de GNU se incluyen en el CD-ROM del producto.

Consulte también el (<http://www.gnu.org/licenses/gpl.txt>) ó el (<http://www.gnu.org/licenses/lgpl.txt>) para ver las cláusulas específicas de cada licencia.

Los códigos fuentes están disponibles para ser descargados del sitio Web de TRENDnet

([http://trendnet.com/downloads/list\\_gpl.asp](http://trendnet.com/downloads/list_gpl.asp)) durante por lo menos tres años a partir de la fecha de envío del producto.

También puede solicitar el código fuente llamando a TRENDnet.

20675 Manhattan Place, Torrance, CA 90501, USA. Tel: +1-310-961-5500 Fax: +1-310-961-5511

### Общая информация о лицензиях GPL/LGPL

В состав данного продукта TRENDnet входит бесплатное программное обеспечение, написанное сторонними разработчиками. Это ПО распространяется на условиях лицензий GNU General Public License ("GPL") или GNU Lesser General Public License ("LGPL"). Программы распространяются БЕЗ ГАРАНТИИ и охраняются авторскими правами разработчиков. TRENDnet не оказывает техническую поддержку этого программного обеспечения. Подробное описание лицензий GNU GPL и LGPL можно найти на компакт-диске, прилагаемом к продукту.

В пунктах (<http://www.gnu.org/licenses/gpl.txt>) и (<http://www.gnu.org/licenses/lgpl.txt>) изложены конкретные условия каждой из лицензий.

Исходный код программ доступен для загрузки с веб-сайта TRENDnet ([http://trendnet.com/downloads/list\\_gpl.asp](http://trendnet.com/downloads/list_gpl.asp)) в течение, как минимум, трех лет со дня поставки продукта.

Кроме того, исходный код можно запросить по адресу TRENDnet.

20675 Manhattan Place, Torrance, CA 90501, USA. Tel: +1-310-961-5500 Fax: +1-310-961-5511

## GPL/LGPL informações Gerais

Este produto TRENDnet inclui software gratuito desenvolvido por terceiros. Estes códigos estão sujeitos ao GPL (GNU General Public License) ou ao LGPL (GNU Lesser General Public License). Estes códigos são distribuídos SEM GARANTIA e estão sujeitos aos direitos autorais dos desenvolvedores. TRENDnet não presta suporte técnico a estes códigos. Os detalhes do GNU GPL e do LGPL estão no CD-ROM do produto.

Favor acessar <http://www.gnu.org/licenses/gpl.txt> ou <http://www.gnu.org/licenses/lgpl.txt> para os termos específicos de cada licença.

Os códigos fonte estão disponíveis para download no site da TRENDnet ([http://trendnet.com/langen/downloads/list\\_gpl.asp](http://trendnet.com/langen/downloads/list_gpl.asp)) por pelo menos três anos da data de embarque do produto.

Você também pode solicitar os códigos fonte contactando TRENDnet, 20675 Manhattan Place, Torrance, CA 90501, USA. Tel: +1-310-961-5500, Fax: +1-310-961-5511.

## GPL/LGPL üldinformatsioon

See TRENDneti toode sisaldab vaba tarkvara, mis on kirjutatud kolmanda osapoole poolt. Koodid on allutatud GNU (General Public License) Üldise Avaliku Litsentsi (GPL) või GNU (Lesser General Public License) ("LGPL") Vähem Üldine Avalik Litsentsiga. Koode vahendatakse ILMA GARANTIITA ja need on allutatud arendajate poolt. TRENDnet ei anna koodidele tehnilist tuge. Detailsemat infot GNU GPL ja LGPL kohta leiate toote CD-ROMil. Infot mõlema litsentsi spetsiifiliste terminite kohta leiate (<http://www.gnu.org/licenses/gpl.txt>) või (<http://www.gnu.org/licenses/lgpl.txt>).

Infot mõlema litsentsi spetsiifiliste terminite kohta leiate (<http://www.gnu.org/licenses/gpl.txt>) või (<http://www.gnu.org/licenses/lgpl.txt>). Lähtekoodi on võimalik alla laadida TRENDneti kodulehelt

([http://trendnet.com/langen/downloads/list\\_gpl.asp](http://trendnet.com/langen/downloads/list_gpl.asp)) kolme aasta jooksul alates toote kättesaamise kuupäevast.

Samuti võite lähtekoodi paluda TRENDneti'lt, 20675 Manhattan Place, Torrance, CA 90501, USA. Tel: +1-310-961-5500, Fax: +1-310-961-5511.

## Certifications

This equipment has been tested and found to comply with FCC and CE Rules.

Operation is subject to the following two conditions:

- (1) This device may not cause harmful interference.
- (2) This device must accept any interference received. Including interference that may cause undesired operation.



Waste electrical and electronic products must not be disposed of with household waste. Please recycle where facilities exist. Check with your Local Authority or Retailer for recycling advice.



**NOTE:** THE MANUFACTURER IS NOT RESPONSIBLE FOR ANY RADIO OR TV INTERFERENCE CAUSED BY UNAUTHORIZED MODIFICATIONS TO THIS EQUIPMENT. SUCH MODIFICATIONS COULD VOID THE USER'S AUTHORITY TO OPERATE THE EQUIPMENT.

## ADVERTENCIA

En todos nuestros equipos se mencionan claramente las características del adaptador de alimentación necesario para su funcionamiento. El uso de un adaptador distinto al mencionado puede producir daños físicos y/o daños al equipo conectado. El adaptador de alimentación debe operar con voltaje y frecuencia de la energía eléctrica domiciliar existente en el país o zona de instalación.



## Product Warranty Registration

Please take a moment to register your product online.  
Go to TRENDnet's website at <http://www.trendnet.com/register>