





Quick Installation Guide  

TEW-692GR
1.01

Table of Contents

| | |
|----------------------------------|----|
| English | 1 |
| 1. Before You Start | 1 |
| 2. Hardware Installation | 4 |
| 3. Configure the Wireless Router | 6 |
| | |
| Troubleshooting | 10 |
| Wireless Tips | 13 |



Package Contents

- TEW-692GR
- Multi-Language Quick Installation Guide
- CD-ROM (User's Guide)
- Network Cable (1.5m / 5ft)
- Power Adapter (12V DC, 1A)

System Requirements

- A computer with a wired or wireless network adapter properly installed
(Note: It is recommended that you configure the Wireless Router from a wired computer)
- Web Browser: Internet Explorer (6.0 or higher), Firefox 2.0 (6.0 or above), Opera, Chrome, Safari
- Broadband Internet
- Installed Cable or DSL Modem

Collect Internet Service Provider (ISP) Information

Please verify your Internet broadband connection type with your ISP and ensure you have all the information for one of the following connection types:

1. DHCP (Dynamic IP Address)

Host Name (Optional): _____
Manually Configure DNS (Enable/Disable)
Primary DNS Server: _____
Secondary DNS Server: _____
Use Default MTU Setting (Enable/Disable)
MTU (default: 1500)
MAC Address Clone (Enable/Disable)

2. Static IP Address

IP Address: _____ (e.g. 215.24.24.129)
Subnet Mask: _____
Default Gateway: _____
Primary DNS Server: _____
Secondary DNS Server: _____
Use Default MTU Setting (Enable/Disable)
MTU (default: 1500)
MAC Address Clone (Enable/Disable)

3. PPP over Ethernet

User Name: _____
Password: _____
Manually Configure DNS (Enable/Disable)
Primary DNS Server: _____
Secondary DNS Server: _____
Operation Mode (Keep Alive, On Demand, Manual)
Keep Alive Mode Redial Period (Default: 10 seconds)
On Demand Mode Idle Time (Default: 5 minutes)
Use Default MTU Setting (Enable/Disable)
MTU (default: 1500)
MAC Address Clone (Enable/Disable)

4. PPTP

PPTP Server IP Address: _____
User Name: _____
Password: _____
Address Mode: Dynamic IP or Static IP
IP Address: _____ (e.g. 215.24.24.129)
Subnet Mask: _____
Default Gateway: _____
Operation Mode (Keep Alive, On Demand, Manual)
Keep Alive Mode Redial Period (Default: 10 seconds)
On Demand Mode Idle Time (Default: 5 minutes)
Primary DNS Server: _____
Secondary DNS Server: _____
Use Default MTU Setting (Enable/Disable)
MTU (default: 1500)
MAC Address Clone (Enable/Disable)

5. L2TP

Server IP Address : _____

User Name: _____

Password: _____

WAN Interface IP Type: Dynamic IP or Static IP

IP Address: _____ (e.g. 215.24.24.129)

Subnet Mask: _____

Default Gateway: _____

Operation Mode (Keep Alive, On Demand, Manual)

Keep Alive Mode Redial Period (Default: 10 seconds)

On Demand Mode Idle Time (Default: 5 minutes)

Primary DNS Server: _____

Secondary DNS Server: _____

Use Default MTU Setting (Enable/Disable)

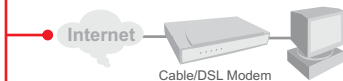
MTU (default: 1500)

MAC Address Clone (Enable/Disable)

2. Hardware Installation

Note: Gather all information related to your Internet Connection before you start. If necessary, contact your Internet Service Provider (ISP).

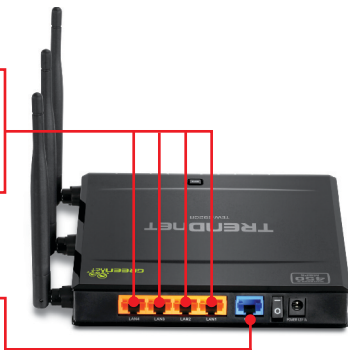
1. Verify that you have an Internet connection when connecting your computer directly to the Cable or DSL modem. Open your browser (e.g. Internet Explorer) and type in a URL (e.g. <http://www.trendnet.com>) in the address bar.



2. Power off your cable or DSL modem.

3. Disconnect the network cable from your Cable or DSL modem and your computer.

4. Connect one end of a network cable to one of the TEW-692GR's network ports. Connect the other end of the cable to the computer's network port.



5. Connect one end of a network cable to the TEW-692GR's WAN port. Connect the other end of the cable to your modem's network port.

ENGLISH

FRANÇAIS

DEUTSCH

ESPAÑOL

РУССКИЙ

6. Connect the Power Adapter to the TEW-692GR and then to a power outlet. Move the power switch to the “On” position (EU version only).



7. Power on your cable or DSL modem. Wait until the LEDs indicate that modem is fully booted up. Consult with the modem user's guide for more information.

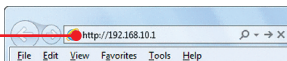
8. Verify that the following panel lights are on: **Power (Green)**, **LAN (port 1,2,3,4) your computer is connected to)(Green)**, **WAN (Green)**, **Wireless (2.4GHz)(Green)** and **Wireless (5GHz)(Blue)**. Please see trouble shooting section for additional information on LED behaviors.



3. Configure the Wireless Router

Note: It is recommended that you configure the Wireless Router from a wired computer.

1. Open your web browser, type **http://192.168.10.1** in the Address bar, and then press **Enter**.

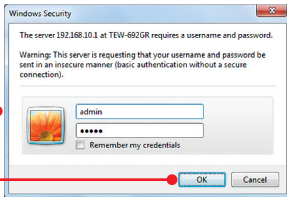


2. Enter the User Name and Password and then click **OK**. By default:

User Name: **admin**

Password: **admin**

Note: User name is case sensitive.



3. Click **Wizard**.



4. Click **Launch Internet Connection Setup Wizard**.

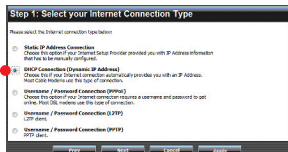


5. Click **Next**.



6. Select the proper Internet Connection Type. Configure the settings based on information provided by your ISP. Then click Next.

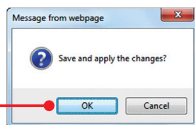
Note: Each Internet Connection type may have different options.



7. Click **Apply**.



8. Click **OK**.



9. Please wait while the router reboots.

10. Click **Wizard**.



11. Click **Wireless Security Setup Wizard**.



12. You will need to configure the following:

Wireless Network Name (SSID) (2.4GHz)
Wireless Network Name (SSID) (5GHz)

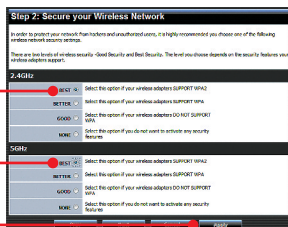
The SSID is the wireless network name of your wireless network (e.g. wireless router or access point). Enter a unique SSID. Choose something that you would easily identify when searching for available wireless networks. Then click **Apply**.



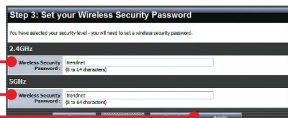
Note:

1. To protect your network from any unauthorized access it is recommended to enable wireless encryption.
2. The example below is for WPA-PSK/WPA2-PSK (AES) (Best) security. If you select WPA-PSK or WPA2-PSK, make sure your wireless adapters support WPA or WPA2. If your wireless adapters do not support WPA or WPA2, then select WEP (Good).
3. WEP encryption only supports 802.11b/g speed of up to 54Mbps.
4. Once encryption is enabled on the router, each wireless computer and device must be configured with the same encryption key.

13. Select **Best** and then click **Apply**.



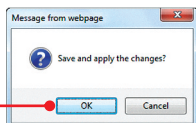
- ## 14. Enter characters for your wireless security password and then click **Apply**. For WPA-PSK or WPA2-PSK, the Pre-Shared Key must be between 8 and 63 ASCII or 64 HEX characters. Make sure to copy down the Pre-Shared Key. You will need the Pre-Shared key when you configure your wireless adapter(s).



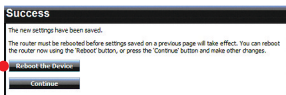
15. Click **Apply**.



16. Click **OK**.



17. Click **Reboot the Device**.



18. Please wait while the router reboots.

19. Open up your browser and enter in a URL (e.g. www.trendnet.com) to verify that you have Internet connection.



Your configuration is now complete

For detailed information regarding the **TEW-692GR**'s configuration and advanced settings, please refer to User's Guide included on the CD-ROM, or TRENDnet's website at <http://www.trendnet.com>.

Register Your Product

To ensure the highest level of customer service and support, please take a moment to register your product Online at: www.trendnet.com/register

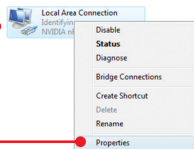
Thank you for choosing TRENDnet

1. I typed `http://192.168.10.1` in my Internet Browser's Address Bar, but an error message says "The page cannot be displayed." How can I get into the TEW-692GR's web configuration page?

1. Check your hardware settings again by following the instructions in Section 2.
2. Make sure the Network Port and Wireless lights are lit.
3. Make sure your TCP/IP settings are set to **Obtain an IP address automatically** (see the steps below).
4. If you are still having problems, reset the TEW-692GR. To reset the TEW-692GR, take a pin or paperclip and press the reset button on the back of the wireless router for 20 seconds. Then let go.

Windows 7

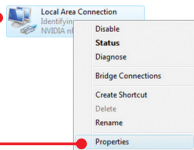
1. Go into the **Control Panel**, click **Network and Internet**, click **Network and Sharing Center**, click **Change Adapter Settings** and then right-click the **Local Area Connection** icon and then click **Properties**.



2. Click **Internet Protocol Version 4(TCP/IPv4)** and then click **Properties**. Then click on **Obtain an IP address automatically**.

Windows Vista

1. Go into the **Control Panel**, click **Network and Internet**, click **Network and Sharing Center**, click **Manage Network Connections** and then right-click the **Local Area Connection** icon and then click **Properties**.



2. Click **Internet Protocol Version 4(TCP/IPv4)** and then click **Properties**. Then click on **Obtain an IP address automatically**.

1. Go into the **Control Panel**, double-click the **Network Connections** icon and then right-click the **Local Area Connection** icon and then click **Properties**.



2. Click **Internet Protocol (TCP/IP)** and then click **Properties**. Then click on **Obtain an IP address automatically**.

2. I am not sure what type of Internet Account Type I have for my Cable/DSL connection. How do I find out?

Contact your Internet Service Provider's (ISP) support service for the correct information.

3. I configured my router with my ISP settings, but I cannot get onto the Internet. What should I do?

1. Verify that you can get onto the Internet with a direct connection into your modem.
2. Contact your ISP and verify all the information that you have in regards to your Internet connection settings is correct.
3. Power cycle your modem and router. Unplug the power to the modem and router. Wait 30 seconds, and then reconnect the power to the modem. Wait for the modem to fully boot up, and then reconnect the power to the router.

4. All the settings are correct, but I cannot make a wireless connection to the Router. What should I do?

1. Double check that the WLAN light on the Router is lit.
2. Power cycle the TEW-692GR. Unplug the power to the router. Wait 30 seconds and then reconnect the power to the router.
3. Contact the manufacturer of your wireless network adapter and make sure the wireless network adapter is configured with the proper SSID. The default SSID of the TEW-692GR is TRENDnet692_2.4GHz and TRENDnet692_5GHz. If you have enabled any encryption on the TEW-692GR, make sure to configure the wireless network adapter with the same wireless security password.

5. When I connect a computer to the router's LAN port, I am not getting Gigabit speeds. What should I do?

1. Make sure that you have a Gigabit Ethernet adapter installed.
2. Make sure to use a Cat-5e or Cat 6 network cable. Some CAT-5 cables are not rated to run in Gigabit.

6. Please give me an explanation of all the LEDs and Buttons.

| LED/Button | Color | Sequence | Definition |
|--|-------|----------|---|
| Power LED | Green | Solid | Device is on |
| | N/A | Off | Device is off |
| Network Port Link/Act LEDs (Ports 1-4) | Green | Solid | LAN port connected at 10/20 Mbps or 100/200Mbps (Half/Full Duplex) |
| | | Blinking | LAN port data transmitting/receiving 10/20Mbps or 100/200Mbps (Half/Full Duplex) |
| | Amber | Solid | LAN port is connected at 2000Mbps (Full Duplex) |
| | | Blinking | LAN port data transmitting/receiving at 2000Mbps (Full Duplex) |
| | N/A | Off | LAN port is disconnected/No Ethernet Link |
| WAN Link/Act LED | Green | Solid | WAN port is connected at 10/20Mbps or 100/200Mbps (Half/Full Duplex) |
| | | Blinking | WAN port data transmitting/receiving at 10/20Mbps or 100/200Mbps (Half/Full Duplex) |
| | Amber | Solid | WAN port is connected at 2000Mbps (Full Duplex) |
| | | Blinking | WAN port data transmitting/receiving at 2000Mbps (Full Duplex) |
| | N/A | Off | WAN port is disconnected/No Ethernet Link |
| Wireless (2.4GHz) LED | Green | Blinking | Wireless LAN (2.4GHz) is on or enabled/Wireless data transmission |
| | N/A | Off | Wireless LAN (2.4GHz) is off or disabled |
| Wireless (5GHz) LED | Blue | Blinking | Wireless LAN (5GHz) is on or enabled/Wireless data transmission |
| | N/A | Off | Wireless LAN (5GHz) is off or disabled |
| WPS LED | Green | Solid | WPS authentication process complete |
| | | Blinking | WPS authentication in process |
| | N/A | Off | WPS is not activated or disabled |
| Power Switch (EU Version only) | N/A | N/A | Turns on/off power to the TEW-692GR |
| Reset Button | N/A | N/A | Hold 20 seconds to reset device to factory defaults |
| WPS Button | N/A | N/A | Hold 3 seconds to activate WPS |

If you still encounter problems or have any questions regarding the **TEW-692GR**, please contact TRENDnet's Technical Support Department.

The following are some general wireless tips to help minimize the impact of interference within an environment.

Assign your network a unique SSID

Do not use anything that would be identifying like “Smith Family Network”. Choose something that you would easily identify when searching for available wireless networks.

Do not turn off the SSID broadcast

The SSID broadcast is intended to be on and turning it off can cause connectivity issues. The preferred method of securing a wireless network is to choose a strong form of encryption with a strong and varied encryption key.

Note: after setting up the SSID, encryption type and encryption key/passphrase, please make a note of them for future reference. You will need this information to connect your wireless computers to the wireless router/access point.

Change the channel

Most wireless access points and routers are defaulted to channel 6. If you have a site survey tool that will display the channels you can plan your channel selection around neighboring access points to minimize interference from them. If your site survey tool does not display the channel try using channels 1 or 11.

Change the channel bandwidth

If you are using an 802.11n router or access point you can also make the following changes. Change the channel bandwidth to 20/40MHz. This will provide the highest possible performance using an 802.11n device. Also, if using 802.11n you should be securing the network with WPA2 security.

Note: Due to Wi-Fi certification considerations if you choose WEP, WPA or WPA2-TKIP encryption this device may operate in legacy wireless mode (802.11b/g). You may not get 802.11n performance as these forms of encryption are not supported by the 802.11n specification.

Avoid stacking hardware on top of each other to prevent overheating issues

Maintain enough free space around the hardware for good ventilation and airflow. There should also be plenty of free space around the antennas to allow the wireless signal to propagate. Please also make sure that the wireless hardware is not placed in any type of shelving or enclosures.

There are a number of other environmental factors that can impact the range of wireless devices.

1. Adjust your wireless devices so that the signal is traveling in a straight path, rather than at an angle. The more material the signal has to pass through the more signal you will lose.

2. Keep the number of obstructions to a minimum. Each obstruction can reduce the range of a wireless device. Position the wireless devices in a manner that will minimize the amount of obstructions between them.
3. Building materials can have a large impact on your wireless signal. In an indoor environment, try to position the wireless devices so that the signal passes through less dense material such as dry wall. Dense materials like metal, solid wood, glass or even furniture may block or degrade the signal.
4. Antenna orientation can also have a large impact on your wireless signal. Use the wireless adapter's site survey tool to determine the best antenna orientation for your wireless devices.
5. Interference from devices that produce RF (radio frequency) noise can also impact your signal. Position your wireless devices away from anything that generates RF noise, such as microwaves, HAM radios, Walkie-Talkies and baby monitors.
6. Any device operating on the 2.4GHz frequency will cause interference. Devices such as 2.4GHz cordless phones or other wireless remotes operating on the 2.4GHz frequency can potentially drop the wireless signal. Although the phone may not be in use, the base can still transmit wireless signals. Move the phone's base station as far away as possible from your wireless devices.

If you are still experiencing low or no signal consider repositioning the wireless devices or installing additional access points. The use of higher gain antennas may also provide the necessary coverage depending on the environment.

Declaration of Conformity



Company Information:

Company Name:

TRENDnet, Inc.

Company Address:

20675 Manhattan Place

Torrance, CA 90501

USA

Product Information:

Product Description:

450Mbps Concurrent Dual Band Wireless N Router



Model Number:

TEW-692GR

Brand name:

TRENDnet

Technical Standards:

EN 300 328 V1.7.1: 10-2006

EN 301 489-1 V1.8.1: 04-2008

EN 301 489-17 V2.1.1 : 05-2009

EN 62311:2008

EN 60950-1:2006+A11: 2009

Declaration:

The product is herewith confirmed to comply with the requirements of Directive 1999/5/EC of the Council (European Parliament) on the radio and telecommunications terminal equipment and Energy-related products Directive 2009/125/EC.

I hereby declare that the products and devices mentioned above are consistent with the standards and provisions of the guidelines.

Sonny Su

Full Name

May 5, 2011

Date

Director of Technology

Position / Title

Signature

GPL/LGPL General Information

This TRENDnet product includes free software written by third party developers. These codes are subject to the GNU General Public License ("GPL") or GNU Lesser General Public License ("LGPL"). These codes are distributed WITHOUT WARRANTY and are subject to the copyrights of the developers. TRENDnet does not provide technical support for these codes. The details of the GNU GPL and LGPL are included in the product CD-ROM.

Please also go to (<http://www.gnu.org/licenses/gpl.txt>) or (<http://www.gnu.org/licenses/lgpl.txt>) for specific terms of each license.

The source codes are available for download from TRENDnet's web site (http://trendnet.com/downloads/list_gpl.asp) for at least three years from the product shipping date.

You could also request the source codes by contacting TRENDnet.

20675 Manhattan Place, Torrance, CA 90501, USA. Tel: +1-310-961-5500 Fax: +1-310-961-5511

Informations générales GPL/LGPL

Ce produit TRENDnet comprend un logiciel libre écrit par des programmeurs tiers. Ces codes sont sujet à la GNU General Public License ("GPL" Licence publique générale GNU) ou à la GNU Lesser General Public License ("LGPL" Licence publique générale limitée GNU). Ces codes sont distribués SANS GARANTIE et sont sujets aux droits d'auteurs des programmeurs. TRENDnet ne fournit pas d'assistance technique pour ces codes. Les détails concernant les GPL et LGPL GNU sont repris sur le CD-ROM du produit.

Veillez également vous rendre en (<http://www.gnu.org/licenses/gpl.txt>) ou en (<http://www.gnu.org/licenses/lgpl.txt>) pour les conditions spécifiques de chaque licence.

Les codes source sont disponibles au téléchargement sur le site Internet de TRENDnet web site (http://trendnet.com/downloads/list_gpl.asp) durant au moins 3 ans à partir de la date d'expédition du produit.

Vous pouvez également demander les codes source en contactant TRENDnet.

20675 Manhattan Place, Torrance, CA 90501, USA. Tel: +1-310-961-5500 Fax: +1-310-961-5511

Allgemeine Informationen zu GPL/LGPL

Dieses Produkt enthält die freie Software "netfilter/iptables" (© 2000-2004 netfilter project <http://www.netfilter.org>) und die freie Software „Linux „mtd“ (Memory Technology Devices) Implementation (© 2000 David Woodhouse), erstmals integriert in Linux Version 2.4.0-test 3 v. 10.07.2000 (<http://www.kernel.org/pub/linux/kernel/v2.4/old-test-kernels/linux-2.4.0-test3.tar.bz2>), sowie weitere freie Software. Sie haben durch den Erwerb dieses Produktes keinerlei Gewährleistungsansprüche gegen die Berechtigten an der oben genannten Software erworben; weil diese die Software kostenfrei lizenzieren gewähren sie keine Haftung gemäß unten abgedruckten Lizenzbedingungen. Die Software darf von jedermann im Quell- und Objektcode unter Beachtung der Lizenzbedingungen der GNU General Public License Version 2, und GNU Lesser General Public License (LGPL) vervielfältigt, verbreitet und verarbeitet werden.

Die Lizenz ist unten im englischsprachigen Originalwortlaut wiedergegeben. Eine nichtoffizielle Übersetzung in die deutsche Sprache finden Sie im Internet unter (<http://www.gnu.de/documents/gpl-2.0.de.html>). Eine allgemeine öffentliche GNU Lizenz befindet sich auch auf der mitgelieferten CD-ROM.

Sie können Quell- und Objektcode der Software für mindestens drei Jahre auf unserer Homepage www.trendnet.com im Downloadbereich (http://trendnet.com/langen/downloads/list_gpl.asp) downloadend. Sofern Sie nicht über die Möglichkeit des Downloads verfügen können Sie bei TRENDnet.

20675 Manhattan Place, Torrance, CA 90501 -U.S.A.-, Tel.: +1-310-961-5500, Fax: +1-310-961-5511 die Software anfordern.

Información general sobre la GPL/LGPL

Este producto de TRENDnet incluye un programa gratuito desarrollado por terceros. Estos códigos están sujetos a la Licencia pública general de GNU ("GPL") o la Licencia pública general limitada de GNU ("LGPL"). Estos códigos son distribuidos SIN GARANTÍA y están sujetos a las leyes de propiedad intelectual de sus desarrolladores. TRENDnet no ofrece servicio técnico para estos códigos. Los detalles sobre las licencias GPL y LGPL de GNU se incluyen en el CD-ROM del producto.

Consulte también el (<http://www.gnu.org/licenses/gpl.txt>) ó el (<http://www.gnu.org/licenses/lgpl.txt>) para ver las cláusulas específicas de cada licencia.

Los códigos fuentes están disponibles para ser descargados del sitio Web de TRENDnet (http://trendnet.com/downloads/list_gpl.asp) durante por lo menos tres años a partir de la fecha de envío del producto.

También puede solicitar el código fuente llamando a TRENDnet.

20675 Manhattan Place, Torrance, CA 90501, USA. Tel: +1-310-961-5500 Fax: +1-310-961-5511

Общая информация о лицензиях GPL/LGPL

В состав данного продукта TRENDnet входит бесплатное программное обеспечение, написанное сторонними разработчиками. Это ПО распространяется на условиях лицензий GNU General Public License ("GPL") или GNU Lesser General Public License ("LGPL"). Программы распространяются БЕЗ ГАРАНТИИ и охраняются авторскими правами разработчиков. TRENDnet не оказывает техническую поддержку этого программного обеспечения. Подробное описание лицензий GNU GPL и LGPL можно найти на компакт-диске, прилагаемом к продукту.

В пунктах (<http://www.gnu.org/licenses/gpl.txt>) и (<http://www.gnu.org/licenses/lgpl.txt>) изложены конкретные условия каждой из лицензий.

Исходный код программ доступен для загрузки с веб-сайта TRENDnet (http://trendnet.com/downloads/list_gpl.asp) в течение, как минимум, трех лет со дня поставки продукта.

Кроме того, исходный код можно запросить по адресу TRENDnet.
20675 Manhattan Place, Torrance, CA 90501, USA. Tel: +1-310-961-5500 Fax: +1-310-961-5511

GPL/LGPL informações Gerais

Este produto TRENDnet inclui software gratuito desenvolvido por terceiros. Estes códigos estão sujeitos ao GPL (GNU General Public License) ou ao LGPL (GNU Lesser General Public License). Estes códigos são distribuídos SEM GARANTIA e estão sujeitos aos direitos autorais dos desenvolvedores. TRENDnet não presta suporte técnico a estes códigos. Os detalhes do GNU GPL e do LGPL estão no CD-ROM do produto. Favor acessar <http://www.gnu.org/licenses/gpl.txt> ou <http://www.gnu.org/licenses/lgpl.txt> para os termos específicos de cada licença.

Os códigos fonte estão disponíveis para download no site da TRENDnet (http://trendnet.com/langen/downloads/list_gpl.asp) por pelo menos três anos da data de embarque do produto.

Você também pode solicitar os códigos fonte contactando TRENDnet, 20675 Manhattan Place, Torrance, CA 90501, USA. Tel: +1-310-961-5500, Fax: +1-310-961-5511.

GPL/LGPL üldinformatsioon

See TRENDneti toode sisaldab vaba tarkvara, mis on kirjutatud kolmanda osapoole poolt. Koodid on allutatud GNU (General Public License) Üldise Avaliku Litsentsi (GPL) või GNU (Lesser General Public License) ("LGPL") Vähem Üldine Avalik Litsentsiga. Koode vahendatakse ILMA GARANTIITA ja need on allutatud arendajate poolt. TRENDnet ei anna koodidele tehnilist tuge. Detailsemat infot GNU GPL ja LGPL kohta leiate toote CD-ROMil. Infot mõlema litsentsi spetsiifiliste terminite kohta leiate (<http://www.gnu.org/licenses/gpl.txt>) või (<http://www.gnu.org/licenses/lgpl.txt>).

Infot mõlema litsentsi spetsiifiliste terminite kohta leiate (<http://www.gnu.org/licenses/gpl.txt>) või (<http://www.gnu.org/licenses/lgpl.txt>). Lähtekoodi on võimalik alla laadida TRENDneti kodulehelt (http://trendnet.com/langen/downloads/list_gpl.asp) kolme aasta jooksul alates toote kättesaamise kuupäevast.

Samuti võite lähtekoodi paluda TRENDneti'lt, 20675 Manhattan Place, Torrance, CA 90501, USA. Tel: +1-310-961-5500, Fax: +1-310-961-5511.

Certifications

This equipment has been tested and found to comply with FCC and CE Rules.

Operation is subject to the following two conditions:

- (1) This device may not cause harmful interference.
- (2) This device must accept any interference received. Including interference that may cause undesired operation.



Waste electrical and electronic products must not be disposed of with household waste. Please recycle where facilities exist. Check with you Local Authority or Retailer for recycling advice.



NOTE: THE MANUFACTURER IS NOT RESPONSIBLE FOR ANY RADIO OR TV INTERFERENCE CAUSED BY UNAUTHORIZED MODIFICATIONS TO THIS EQUIPMENT. SUCH MODIFICATIONS COULD VOID THE USER'S AUTHORITY TO OPERATE THE EQUIPMENT.

ADVERTENCIA

En todos nuestros equipos se mencionan claramente las características del adaptador de alimentación necesario para su funcionamiento. El uso de un adaptador distinto al mencionado puede producir daños físicos y/o daños al equipo conectado. El adaptador de alimentación debe operar con voltaje y frecuencia de la energía eléctrica domiciliar existente en el país o zona de instalación.



Product Warranty Registration

Please take a moment to register your product online.
Go to TRENDnet's website at <http://www.trendnet.com/register>