



Quick Installation Guide



TS-S402

Table of Contents

English	1
1. Before You Start	1
2. Hardware Installation	2
3. Configure the Storage Server	4
4. Using the TS-S402	7
Troubleshooting	12

1. Before You Start



Package Contents

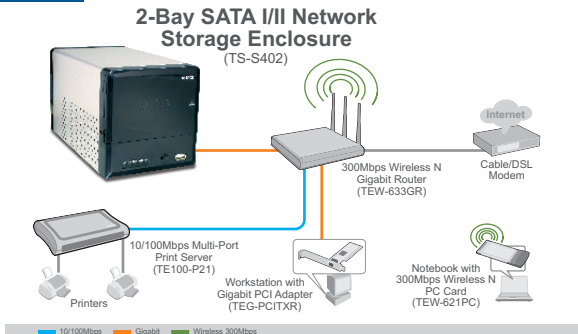
- TS-S402
- Utility CD-ROM
- Quick Installation Guide
- Power Cord
- AC Power Adapter (12V DC, 7.0A)
- Mounting Brackets

System Requirements

- Web Browser: Internet Explorer (6.0 or higher)
- A computer with a network adapter properly installed
- A network Switch or Hub with an available network LAN port
- A RJ-45 network cable.
- SATA I/II Hard Drive or USB 2.0 Storage Device (i.e. flash drive, external hard drive)
- iTunes (optional)

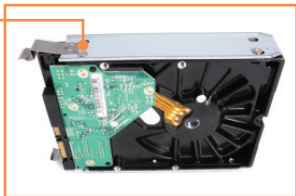
Note: Hard Drive and USB Storage Device are not included.

Application



2. Hardware Installation

1. Secure the supplied hard drive brackets to both sides of a 3.5" SATA hard drive using the provided screws.



2. On the front of the TS-S402, press push to open up the enclosure door.



3. Insert the hard drive into one of the two slots. Then connect the SATA data and power cable to the hard drive.



4. Repeat steps 1-3 for a second hard drive.

5. If you have a USB storage device, connect it to one of the 2 USB ports on the front or back of the TS-S402.



6. Connect a RJ-45 cable from the Switch/Hub to the **LAN** port of the TS-S402.



7. Connect the power cord to the power adapter.

8. Connect the External Power Adapter to the Storage Server and then to a power outlet.



9. Press the power button.

10. Verify that the following panel lights are on: **Power, LAN, HDD.**



Your hardware installation is now complete.

Register Your Product

To ensure the highest level of customer service and support, please take a moment to register your product Online at: www.trendnet.com/register
Thank you for choosing TRENDnet

3. Configure the Storage Server

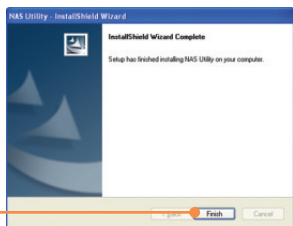
Note: It is recommended that you configure the Storage Server from a wired computer. Since the Storage Server's default IP address is 192.168.10.10, make sure no other network devices are assigned an IP address of 192.168.10.10.

For Windows Users

1. Insert the **Utility CD-ROM** into your computer's CD-ROM Drive and then click **Install Utility**.



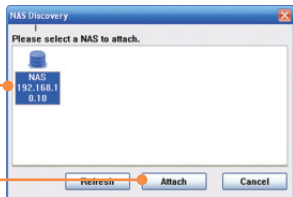
2. Follow the **Installation Wizard** instructions and then click **Finish**. Repeat step 1 and 2 for each Windows client PC.



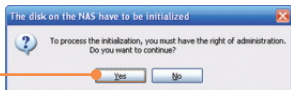
3. Double-click the **NAS Utility** icon.



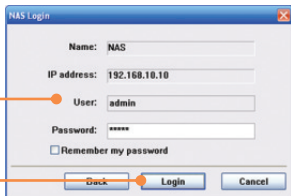
4. Select the storage server and click **Attach**.



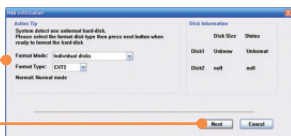
5. Click **Yes**.



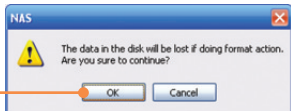
6. Enter the administrator **User ID and Password**. Then click **Login**.
By default:
User: **admin**
Password: **admin**



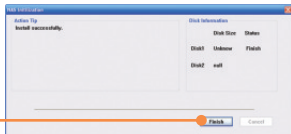
7. Select the **Format Type** (e.g. **EXT2, EXT3**) and then click **Next**.



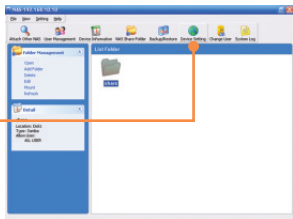
8. Click **OK** to continue.



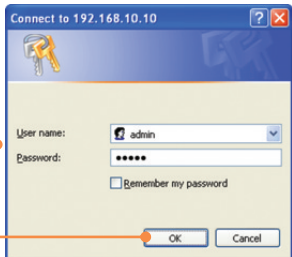
9. Click **Finish**.



10. Click **Device Setting**.



11. Enter the administrator User name and Password, and then click **OK**. By default:
User Name: **admin**
Password: **admin**



12. Click **Configuration**, and then click **Networking**. Configure the **IP Address**, **Subnet mask**, **Gateway** and then click **Modify**.
Note: The IP Address must match the network segment of your network.



Your configuration is now complete.

For detailed information regarding the **TS-S402** configuration and advanced settings, please refer to the Troubleshooting section, User's Guide CD-ROM, or TRENDnet's website at <http://www.trendnet.com>.

Add User

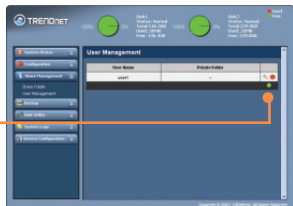
1. In the browser configuration, click **Share Management**, then **user management**. Then click on the green plus sign. If you are creating a shared folder, skip this step and continue on to **Create Folder**.



2. Enter a User Name and Password, confirm the password and then click **Apply**.



3. Click the green plus sign to add additional users.
Note: A User Name can only be used on one computer at a time. Add a user name for each client that will have access to the TS-S402.



Create Folder

1. Click **Share Management**, then click **Share Folder**. Select the Disk Name, and enter a Folder Name.

Shared Folder

Select **Anonymous**, and then click apply.

Private Folder

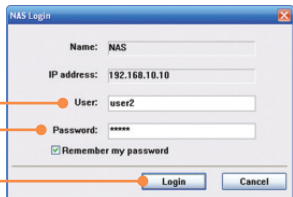
Click **Private Folder**. Select a user, then click **Add New User**. Click **Read Only** to give read only access, then click **Apply**.



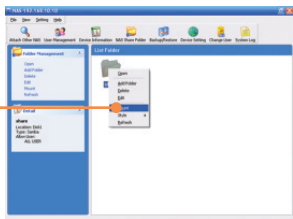
Access Folder on Windows Client PC

1. Open up the NAS utility (see step 2 and 3 under Section 3: Configure the Storage Server)

2. Enter the client's User (user name) and Password. Then click **Login**. See **Add User** above if you have not added a user.



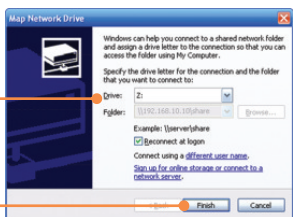
3. Right click the folder and click **Mount**.



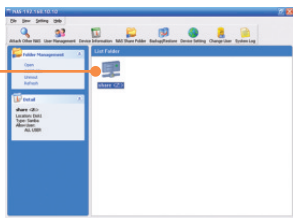
4. If you are accessing a private folder, this window will appear. Click **OK**.



5. Select an available **Drive** (e.g. Z:) and click **Finish**.



6. Double-click the folder (e.g. **share <Z:>**. Z represents the available Drive that you selected in step 2.)



7. Repeat steps 1-7 on each Windows PC.

Backup data on USB drives to share folder on hard drive

1. Press the **Backup** button on the front of the storage server until the **SYS** and **HDD /HDD2** LEDs are blinking.



2. Wait until **SYS** and **HDD/HDD2** LEDs become steady.

3. Double click on the share folder.



4. USBCopy folder will appear.



USBCopy

Setting up iTunes Server

1. In the browser configuration for the TS-S402, click on **Configuration**, then click **Server Preference**. By default, **iTunes** is enabled. If **iTunes** is disabled, select **Enable** and then click **Apply**.



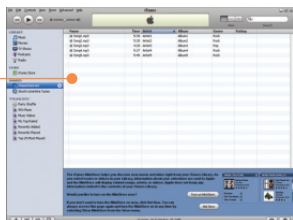
2. Click **Service Configuration** and then click **iTunes Server**. Enter a **iTunes Server Name**, select a **Share Folder** and enter a refresh time (seconds). Click **Enable** to enable password protection. Set and confirm password, and then click **Apply**.



3. On a client PC, open **iTunes**. Click **iTunes Servers**. If you enabled password protection, enter the password and then click **OK**.



4. If you have any music in the shared folder, the songs will now appear.



Q1: Can I connect or disconnect the USB storage device while the TS-S402 is on?

A1: Yes, you can connect or disconnect any external USB device while the computer is on, because the USB interfaces are Plug-and-Play and hot-pluggable.

Q2: The NAS utility is unable to detect the Storage Server. What should I do?

A2: First, check your hardware settings again by following the instructions in section 2.

Second, make sure the LAN lights is lit. Third, disable any software firewall programs (e.g. Norton Internet Security, McAfee). If you are running Windows XP or Vista, disable the built-in firewall. Fourth, try installing the NAS utility on another Windows PC. Fifth, Take a pin or paperclip, press on it for 15 seconds and then let go. Sixth, put a static IP address in the same subnet as the storage server. Then open up your browser and type in the address bar `http://192.168.10.10`. Then hit Enter. Please see the steps below for instructions on putting a static IP address on your Windows PC:

1. Go into the **Control Panel** and double-click the **Network Connections** icon, right-click the **Local Area Connection** icon and then click **Properties**.

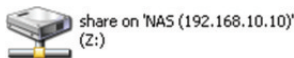


2. Click **Internet Protocol (TCP/IP)** and then click **Properties**. Then click on **Use the following IP address**, and make sure you assign your network adapter an IP address in the subnet of 192.168.10.x.

Q3: I am unable to mount or access the SATA hard drive. What should I do?

A3: First, verify that the SATA hard drive has been properly installed (see section 2).

Second, connect the SATA hard drive to the second SATA power and data cable. Third, double click on My Computer. If you were able to mount the device, you should see the icon for drive under **Network Drives**.



Q4: What file formats are supported?

A4: EXT2 and EXT3 file formats are supported for hard drive. FAT16, FAT32 and NTFS file formats are support for USB storage devices.

Q5: I setup a password on my storage server, but I forgot it. How do I reset the storage server to factory defaults.

A5: There is a reset button on the back of the storage server. Take a pin or paperclip, press on it for 15 seconds and then let go. The default user name and password is admin.

Q6: I press on the power button on the TS-S402 to turn it off, but it remains on. What should I do?

A6: Make sure to press the power button all the way in and hold for five seconds.

Q7: When I connect the storage device to a Gigabit switch, I am not getting Gigabit speeds. What should I do?

A7: Make sure you are using CAT-5e or CAT-6 Ethernet Cables. Some CAT-5 cables are not rated to run in Gigabit.

If you still encounter problems or have any questions regarding the **TS-S402**, please contact TRENDnet's Technical Support Department.

Certifications

This equipment has been tested and found to comply with FCC and CE Rules.

Operation is subject to the following two conditions:

- (1) This device may not cause harmful interference.
- (2) This device must accept any interference received. Including interference that may cause undesired operation.



Waste electrical and electronic products must not be disposed of with household waste. Please recycle where facilities exist. Check with you Local Authority or Retailer for recycling advice.



NOTE: THE MANUFACTURER IS NOT RESPONSIBLE FOR ANY RADIO OR TV INTERFERENCE CAUSED BY UNAUTHORIZED MODIFICATIONS TO THIS EQUIPMENT. SUCH MODIFICATIONS COULD VOID THE USER'S AUTHORITY TO OPERATE THE EQUIPMENT.

ADVERTENCIA

En todos nuestros equipos se mencionan claramente las características del adaptador de alimentación necesario para su funcionamiento. El uso de un adaptador distinto al mencionado puede producir daños físicos y/o daños al equipo conectado. El adaptador de alimentación debe operar con voltaje y frecuencia de la energía eléctrica domiciliar existente en el país o zona de instalación.



TRENDnet[®]

TRENDnet Technical Support

US • Canada

Toll Free Telephone: 1(866) 845-3673

24/7 Tech Support



Europe (Germany • France • Italy • Spain • Switzerland • UK)

Toll Free Telephone: +00800 60 76 76 67

English/Espanol - 24/7

Francais/Deutsch - 11am-8pm, Monday - Friday MET

Worldwide

Telephone: +(31) (0) 20 504 05 35

English/Espanol - 24/7

Francais/Deutsch - 11am-8pm, Monday - Friday MET

Product Warranty Registration

Please take a moment to register your product online.

Go to TRENDnet's website at <http://www.trendnet.com/register>

TRENDnet[®]

20675 Manhattan Place
Torrance, CA 90501
USA