

P-2812HNU(L)-Fx Series

Quick Start Guide

*802.11n Wireless VDSL2 VoIP
Combo WAN IAD*

Firmware Version 3.10
Edition 1, 3/2011



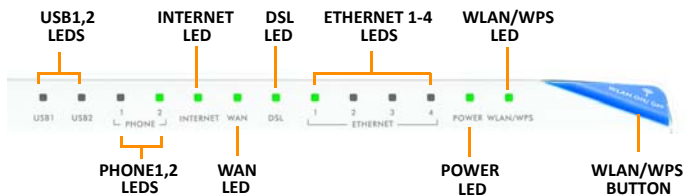
DEFAULT LOGIN DETAILS

IP Address:	http://192.168.1.1
Username:	Admin account: admin User account: user
Password:	Admin account: 1234 User account: 1234

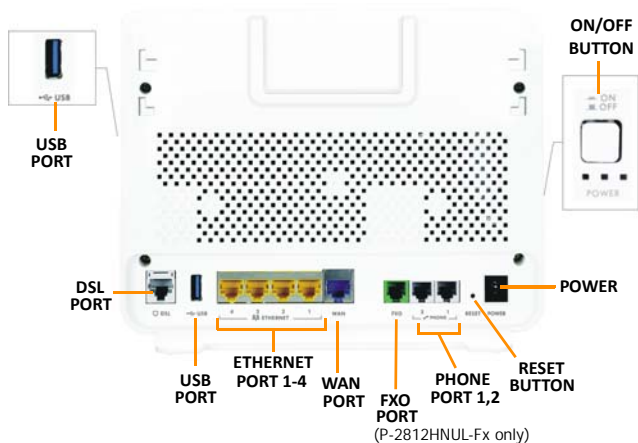
ZyXEL

Device Panels

Front



Back

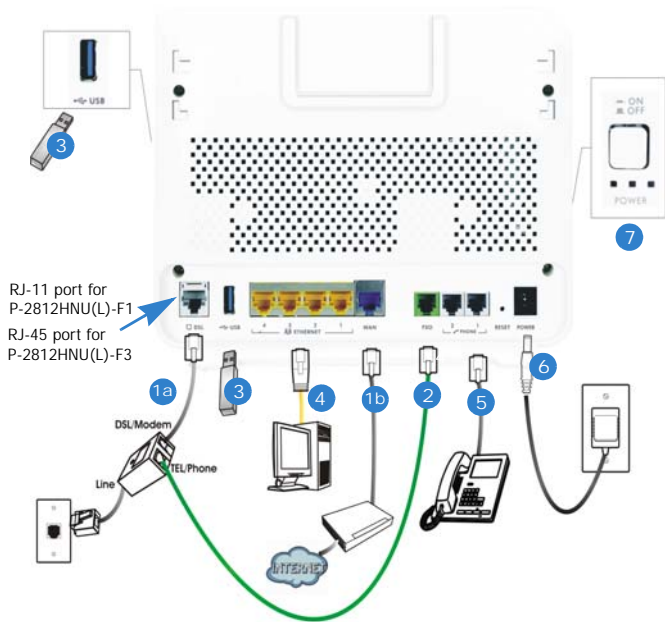


Requirements

Make sure you have the following things before you start:

- **INTERNET ACCESS:** You need an Internet account with an ISP (Internet Service Provider) and information such as your user name, password, and so on.
- **VoIP ACCOUNT:** If you wish to make phone calls over the Internet, you need the account information provided by your VoIP service provider (the company that lets you make phone calls over the Internet).
- **3G account:** if you want to access the Internet through a 3G network. The P-2812HNU(L)-Fx Series uses this 3G connection as your WAN or a backup when the DSL/Ethernet WAN connection fails.
- **WEB BROWSER:** Internet Explorer 6.0 and later versions, with JavaScript enabled, or Mozilla Firefox 3 and later versions, or Safari 2.0 and later versions. The browser will be used to access the Internet and/or access the P-2812HNU(L)-Fx's Web Configurator.

Hardware Connections

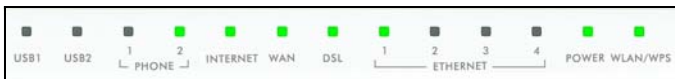


1. Do one of the following for your Internet connection:
 - a. **DSL:** For P-2812HNU(L)-F1, the port is RJ-11; for P-2812HNU(L)-F3, the port is RJ-45. Use a telephone wire to connect this port to a telephone jack (or the **DSL/MODEM** jack on a splitter, if you have one).
 - b. **WAN:** If you have a DSL router or modem already installed in your network, use an Ethernet cable to connect this port to an Ethernet jack in the modem with Internet access.
2. **FXO** (for “L” models only): You need a splitter to use the FXO port. Use a PSTN line cable to connect the **TEL** (or **PHONE**) jack on a splitter to this port.
3. **USB 2.0:** There are two USB ports on your P-2812HNU(L)-Fx Series, one is at the back panel and one is at the side panel. You can do the following:
 - a. Use a USB cable (not provided) to connect a USB device (version 2.0 or lower) such as USB hard drive or printer for file or printer sharing.
 - b. Insert a 3G adapter to access the Internet wirelessly via a 3G network. The P-2812HNU(L)-Fx Series uses this 3G WAN connection as a backup when the DSL/Ethernet WAN connection fails.
4. **ETHERNET:** If you want a wired connection to the P-2812HNU(L)-Fx Series, use an Ethernet cable to connect a computer to one of these ports for initial configuration and/or Internet access.
5. **PHONE:** To make calls over the Internet, use a telephone cable (and any telephone adaptor provided with your P-2812HNU(L)-Fx Series) to connect a telephone to the **PHONE 1** or **PHONE 2** port. If you only have one telephone, you should use **PHONE 1**.

6. Use the power adaptor provided with your P-2812HNU(L)-Fx Series to connect an appropriate power source to this socket.

7. Push the **POWER** button to the **ON** position.

Look at the LEDs (lights) on the front panel of the P-2812HNU(L)-Fx Series:



- The **POWER** light blinks during start-up and stays on once the P-2812HNU(L)-Fx Series is ready.
- The **ETHERNET** light turns on if the corresponding **ETHERNET** port is properly connected and it blinks when there is traffic. If you do not connect a computer correctly to any of these ports, the **ETHERNET** lights will not turn on.
- The **WLAN/WPS** light stays on and green when the wireless LAN is ready. The light will not turn on if the wireless connection is not activated. It is blue when WPS configured.
- The **DSL** light will stay on if a physical **DSL** connection exists.
- The **WAN** light stays on if a physical Ethernet connection to the WAN exists. It blinks when transmitting data.
- The **INTERNET** light is green when Internet access is available. It blinks when transmitting data.
- The **PHONE** lights stay on when your SIP account is registered and they blink if the receiver is off the hook.
- The **USB** light(s) turn on when there is a USB device (printer or memory stick) or a 3G adapter connected to the P-2812HNU(L)-Fx Series and blinks when transmitting data.

If the **POWER** light does not turn on during start up, try turning the P-2812HNU(L)-Fx Series off, check the connections, wait a few seconds and then turn it back on. If the problem persists, you may have a hardware problem and you need to contact your vendor.

Internet Access Setup

- If you are using a **DSL** connection and you have Internet access, the **DSL** and **INTERNET** lights will be on.
- If you are using an **Ethernet WAN** connection and you have Internet access, the **WAN** and **INTERNET** lights will be on.

Open your web browser and go to <http://www.zyxel.com>. You may be prompted to enter your username and password when attempting to browse.

- If the **DSL** or **WAN** lights are not on, try turning the P-2812HNU(L)-Fx Series off, check the connections, wait a few seconds and then turn it back on. If the **DSL** or **WAN** lights are still not on, contact your service provider.
- If the **DSL** or **WAN** lights are on, but the **INTERNET** light is off, you may need to enter your Internet access configuration using the Web Configurator - see page 10.

Setting Up a Wireless Connection

If you want to set up a wireless connection using the P-2812HNU(L)-Fx Series, you can use the wireless SSID (network name) and the encryption key located in the back panel.

If you wish to use WPS (Wi-Fi Protected Setup), please refer to the User's Guide.

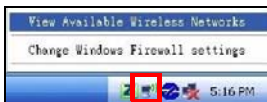
Setting Up a Wireless Connection using the Information on the Label

The wireless function on your device is disabled by default. Press the P-2812HNU(L)-Fx Series' **WLAN ON/OFF** at the top panel for 1 second to turn this function on or off.

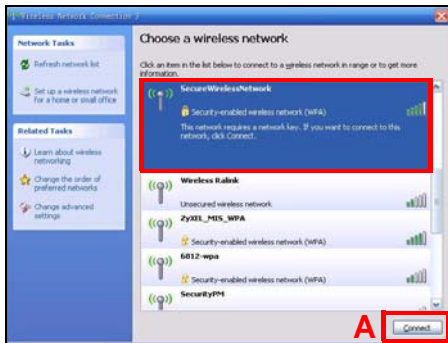
To add a wireless client to the network, use the settings found in the back panel of the P-2812HNU(L)-Fx Series, such as the following example:

SSID: SecureWirelessNetwork
WPA2-PSK: 7WC3R7TVKWK3R

1. Right-click the wireless adapter icon which appears in the bottom right of your computer monitor. Click **View Available Wireless Networks**.



2. Select the P-2812HNU(L)-Fx Series' **SSID** name and click **Connect** (A). The SSID "SecureWirelessNetwork" is given here as an example.




3. You are prompted to enter a password. Enter the encryption key (WPA-PSK) found in the back panel of the P-2812HNU(L)-Fx Series and click **Connect**.



4. You may have to wait several minutes while your computer connects to the wireless network.
5. You should now be securely connected wirelessly to the P-2812HNU(L)-Fx Series.



 *If you cannot connect wirelessly to the P-2812HNU(L)-Fx Series, check that you have selected the correct **SSID** and entered the correct security key. If that does not work, ensure that the **WLAN/WPS LED** on the front panel is turned on.*

Making Phone Calls

Follow these directions to make calls over the Internet.

1. To dial a SIP number, press the numbers on your phone's keypad to make the call.
2. To call regular telephone numbers, use your VoIP service provider's dialing plan.

3. For call forward service, contact your service provider to know if they support this feature.
4. To receive a call through the P-2812HNU(L)-Fx Series, the other party must have your SIP number and a SIP account of their own.

The Web Configurator


The Web Configurator is a web browser tool that allows you to configure the P-2812HNU(L)-Fx Series. The computer and the P-2812HNU(L)-Fx Series need to be in the same IP address range to use this tool.

1. Open your browser and enter **http://192.168.1.1** (the P-2812HNU(L)-Fx Series' default IP address).



2. For administrator login, enter the default username "admin" and password "1234".
3. Click **Login**.



 *If the login screen does not open, make sure you allow web browser pop-up windows, JavaScript and Java permissions. Your computer should also be set to get an IP address automatically from a DHCP server. See your User's Guide for more information.*

4. If the **INTERNET** light is off, manually configure the Internet connection. Click **Network Setting > Broadband**, then click on the **Edit** icon of the connection you want to configure (**EthernetWAN**, **ADSL** or **VDSL**).

#	Name	Type	Mode	Encapsula...	IPv6	VPI	VCI
1	EtherWAN1	EtherWAN	Routing	IPoE	Disable	N/A	N/A
2	AdslWAN1	ADSL	Routing	IPoE	Disable	8	35
3	VdslWAN1	VDSL	Routing	IPoE	Disable	N/A	N/A

Vlan8021p	VlanMuxcd	ATM QoS	IGMP Proxy	NAT	Default GaL...	Modify
N/A	N/A	N/A	Enabled	Enabled	Yes	 
N/A	N/A	UBR	Enabled	Enabled	Yes	 
N/A	N/A	N/A	Enabled	Enabled	Yes	 

5. Manually enter the information provided by your ISP. Click **Apply**, wait for the **INTERNET** light to turn on and then try browsing to <http://www.zyxel.com>. For more information check the **Broadband** section in the **User's Guide**.
- To configure wireless access, go to **Network Setting > Wireless**.
 - To configure the USB File Sharing feature, go to **Network Setting > Home Networking > File Sharing**.
 - To set up WPS using the Web Configurator, go to **Network Setting > Wireless > WPS**.

Procedure to View a Product's Certification(s)

1. Go to www.zyxel.com.
2. Select your product from the drop-down list box on the ZyXEL home page to go to that product's page.
3. Select the certification you wish to view from this page.

For more information, please refer to the User's Guide on the provided CD or at the www.zyxel.com download library.

Was this guide helpful? Send your comments to techwriters@zyxel.com.tw

Declaration of Conformity

We, ZyXEL Communications Corp., located at No.6, Innovation Rd II, Science-Park, Hsin-Chu, 300, Taiwan, declare under our sole responsibility that the product:

Product information

Product Name : VDSL2 VoIP IAD
P-2812HNUL-F1, P-2812HNU-F1, P-2812HN-F1, P-2812HNL-F1,
Model Number : P-2812HUL-F1, P-2812HL-F1, P-2812HNUL-F3, P-2812HNU-F3,
P-2812HN-F3, P-2812HNL-F3, P-2812HUL-F3, P-2812HL-F3

Produced by

Company Name : ZyXEL Communications Corporation
Company Add. : No. 6, Innovation Road II, Science-Park, Hsin-Chu, 300, Taiwan

to which this declaration relates, is in conformity with the following standards or other normative documents:

EN 301 489-17 V2.1.1: 2009	EN 50385: 2002
EN 301489-1 V1.8.1: 2008	COMMISSION REGULATION (EC)
EN 61000-3-2: 2006	No 1275/2008
EN 61000-3-3: 2008	COMMISSION REGULATION (EC)
EN 55022: 2006+A1: 2007	No 278/2009
EN 300328 V1.7.1 (2006-10)	
Safety EN 60950-1: 2006+A11: 2009	


Following the provisions of 2004/108/EC; 92/31/EEC Directive; 93/68/EEC, 99/5/EEC , LVD 2006/95/EC, and ErP 2009/125/EC..

In accordance with Annex III of the Directive 1999/5/EC.

The TCF-File is located at:

Company Name : ZyXEL Communications Czech s.r.o.
Company Address : Modranska 621, 143 01 Praha 4, Czech Republic

Person is responsible for marking this declaration:

Milan Baran	VP Operations
_____ Name (Full Name)	_____ Position/ Title
2011-03-14	
_____ Date	_____ Legal Signature